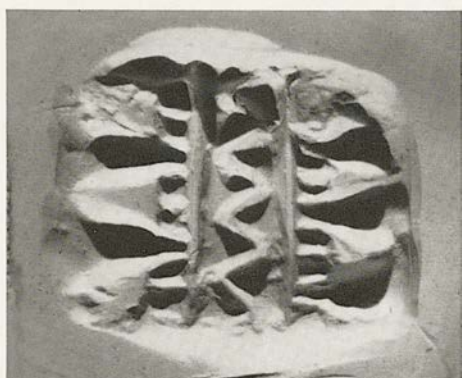
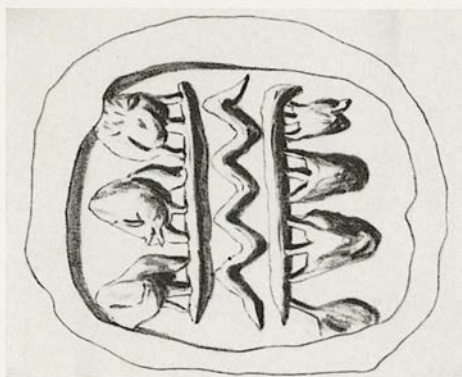


FITZWILLIAM MUSEUM  
UNIVERSITY OF CAMBRIDGE

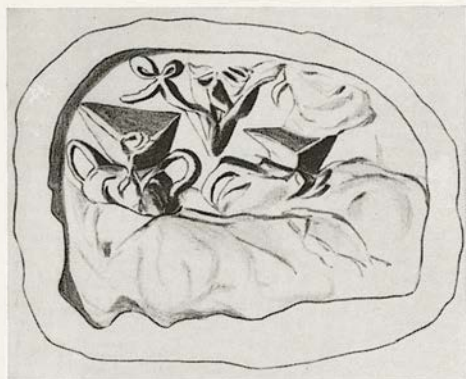
FIRST TRANSITIONAL PHASE

No. 206



206. Fitzwilliam 78. 1901  
 Grey-green steatite  
 L. 1,4. W. 1,3; 1,2; 1,2. S. H. 0,25  
 Three-sided prism bead  
 From Sitanos

a) Cretan dog to the left, regardant; within a hatched border.  
 b) Six storage vessels.



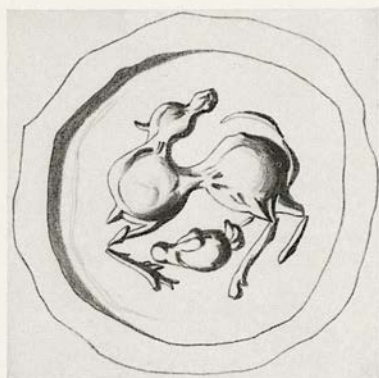
206. Fitzwilliam 78. 1901  
 Grey-green steatite  
 L. 1,4. W. 1,3; 1,2; 1,2. S. H. 0,25  
 Three-sided prism bead  
 From Sitanos

c) Two two-handled jars and a sheep's head.

MIDDLE MINOAN IA

Nos. 207-213

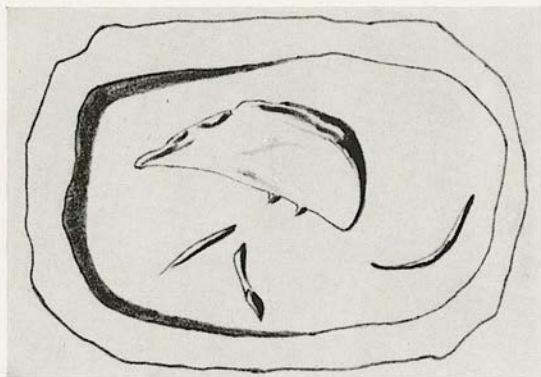






207. Fitzwilliam 75. 1901  
 Pale green steatite  
 L. 1,4. W. 1,1; 1,4; 1,4. S. H. 0,3  
 Three-sided prism bead

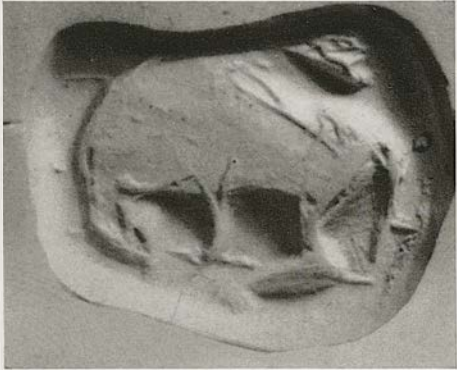
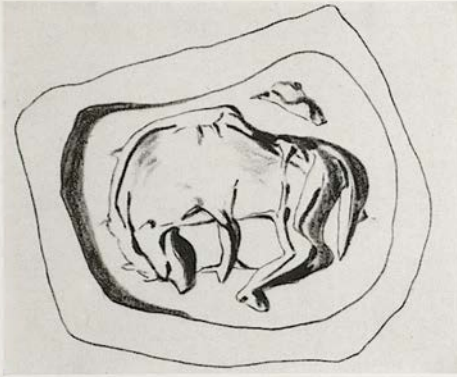
- a) Cretan dog with head of animal below.
- b) The foreparts of two dogs joined antithetically.
- c) Five birds' heads issue from one central boss to make a star pattern.



208. Fitzwilliam 74. 1901  
 Black steatite  
 L. 1,1. W. 0,7; 0,7; 0,7. S. H. 0,25  
 Three-sided prism bead  
 From Anavlochos

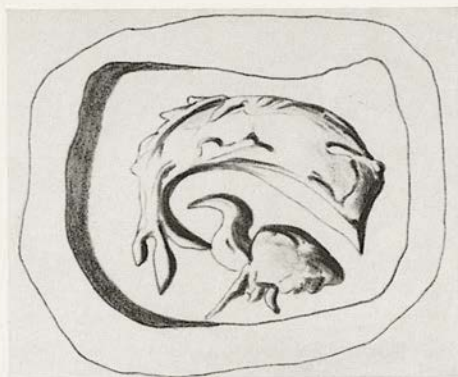
- a) Bird walking to the left.
- b) Engraving lost by wear.
- c) Engraving lost by wear.





209. Fitzwilliam 76. 1901  
 Yellow-brown steatite  
 L. 1,25. W. 1,0; 1,0; 1,0. S. H. 0,2  
 Three-sided prism bead

- a) Quadruped.  
 b) A frog.



209. Fitzwilliam 76. 1901  
Yellow-brown steatite  
L. 1,25. W. 1,0; 1,0; 1,0. S.H. 0,2  
Three-sided prism bead

c) A dolphin and a water bird.



210. Fitzwilliam 69. 1901

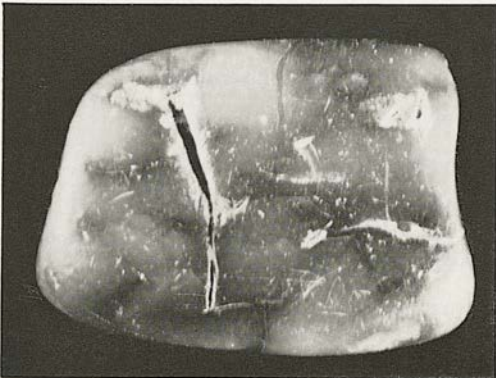
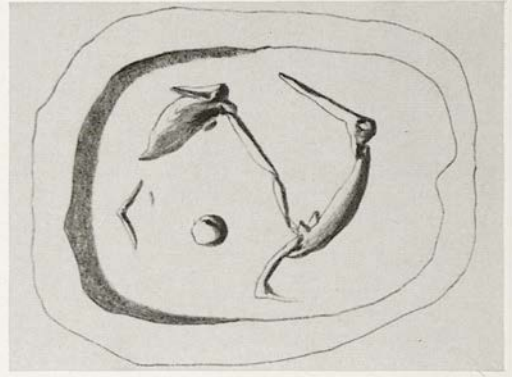
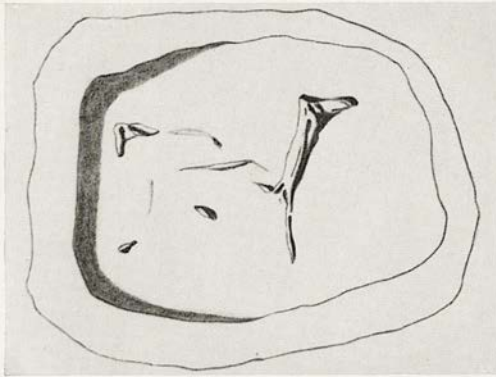
Green steatite

H. 1,2.  $\phi$  1,2. S. H. 0,25

Conoid decorated with vertically curved  
lines

Cretan dog to the right; triangular quantity in  
the field.



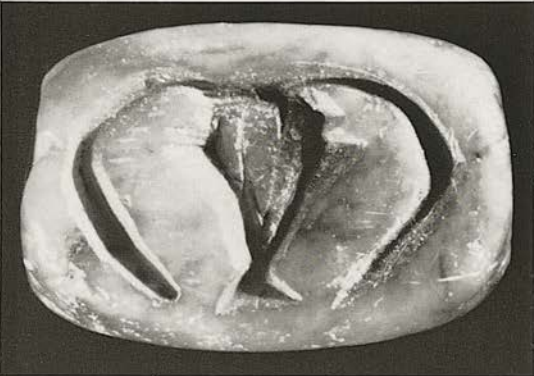
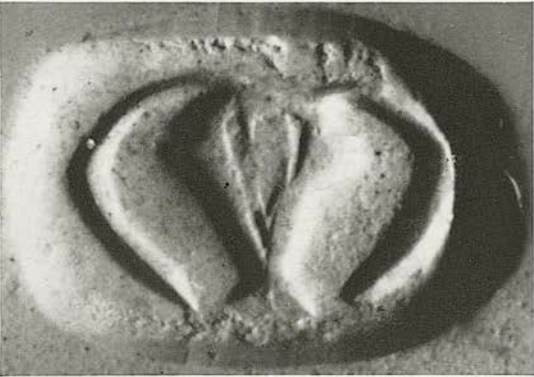
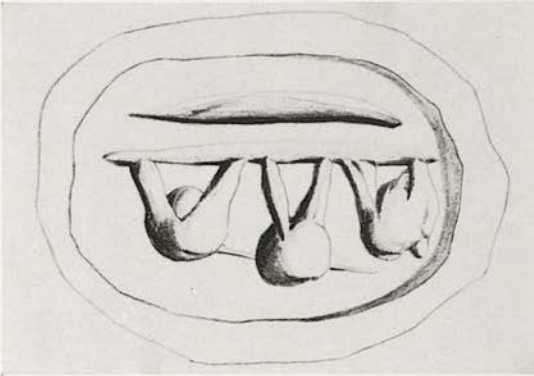
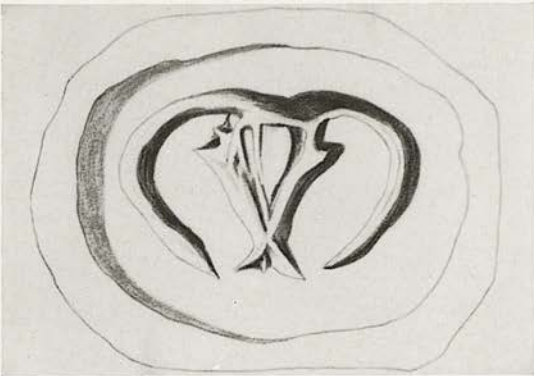


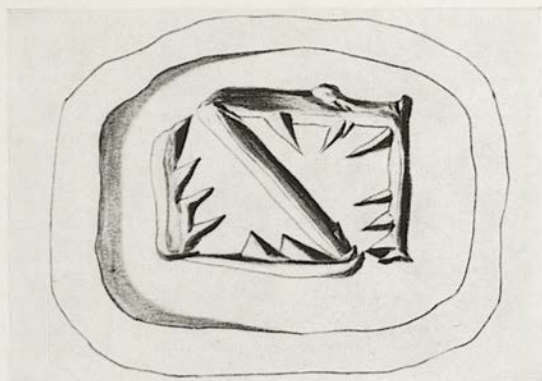




211. Fitzwilliam 77. 1901  
Black steatite  
L. 1,4. W. 1,0; 1,0; 1,0. S. H. 0,3  
Three-sided prism bead

- a) Cretan dog to right.
- b) Cretan dog to right.
- c) Fractured and worn.

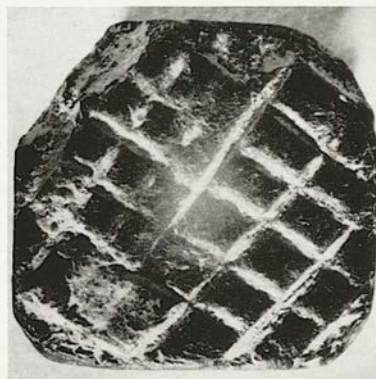
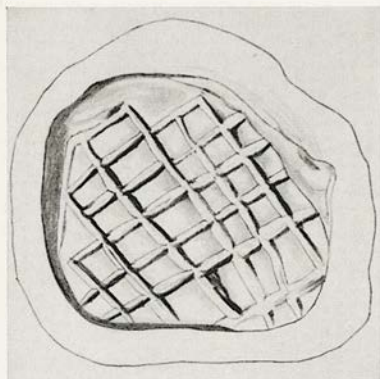




212. Fitzwilliam 73. 1901  
 Green-grey steatite  
 L. 1,3. W. 0,9; 0,9; 0,9. S.H. 0,3  
 Three-sided prism bead  
 From Anavlochos

- a) A bucranium.  
 b) Three storage vessels. A leaf-like quantity engraved parallel to the pole.  
 c) An incomplete quadrilateral design diagonally divided and toothed. Side b seems to have been subject to re-engraving.





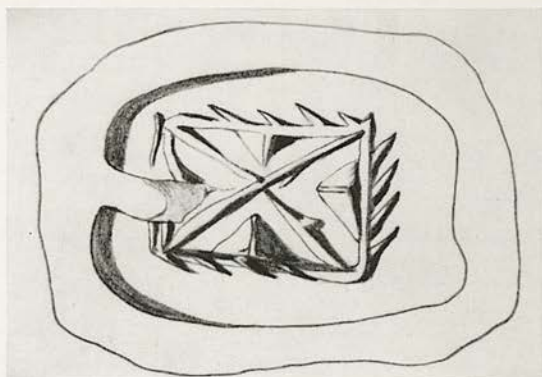
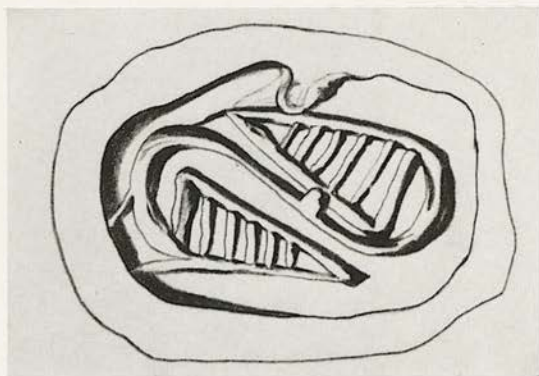
213. Fitzwilliam 8. 1938  
Black steatite  
H. 0,8.  $\phi$  1,6  $\times$  1,6. S. H. 0,3  
Stamp seal with curved ridged handle

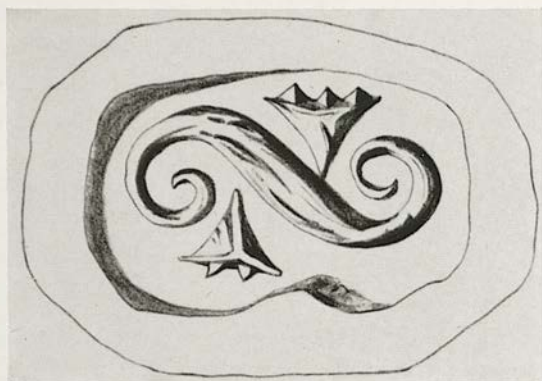
The square base is engraved with a diagonal lattice design.



MIDDLE MINOAN IB

Nos. 214-217

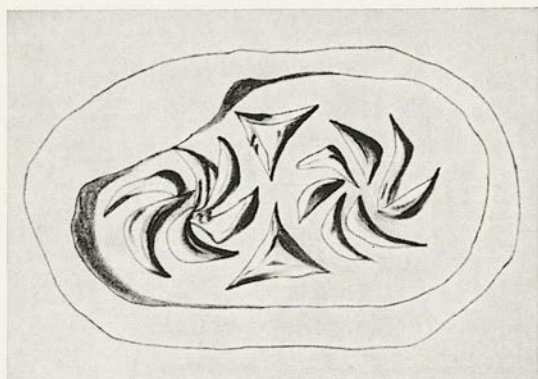




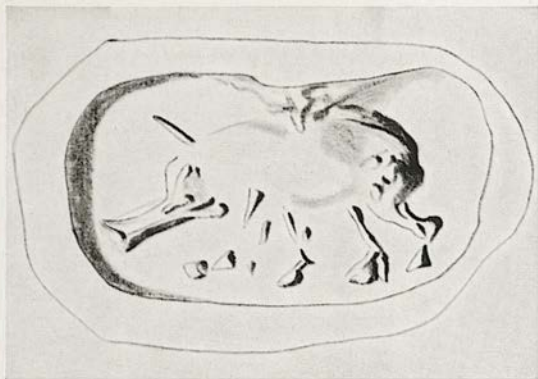
214. Fitzwilliam 80. 1901  
 Dark green steatite  
 L. 1,2. W. 0,7; 0,7; 0,7. S.H. 0,3  
 Three-sided prism bead

- a) Two leaves antithetically disposed. They are hatched and join.
- b) A quadrilateral design toothed and diagonally quartered.
- c) An S-spiral with leaf decoration.



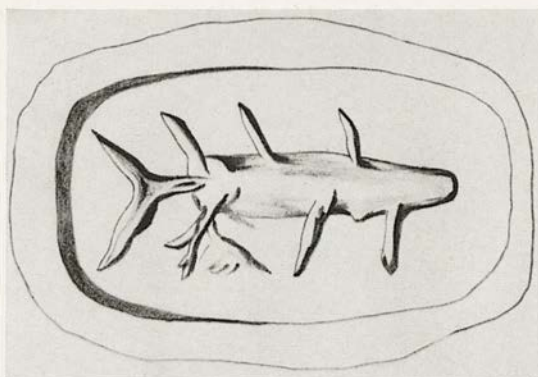


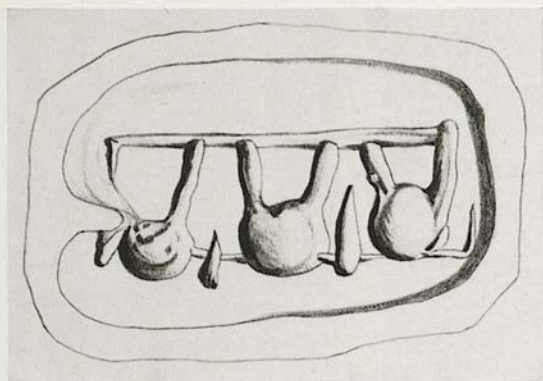




215. Fitzwilliam 79. 1901  
 Dark green steatite  
 L. 1,5. W. 0,8; 0,8; 0,8. S. H. 0,25  
 Three-sided prism bead

- a) Two stars with curved rays divided by two triangles.
- b) Cretan version of two foreign amuletic shapes.
- c) Remains of a boar, much worn.

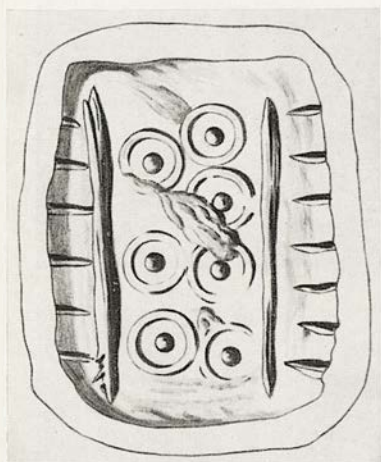
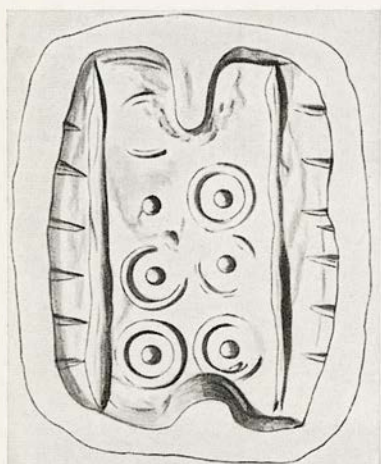




216. Fitzwilliam 72. 1901  
 Grey and black steatite  
 L. 1,6. W. 0,8; 0,8; 0,8. S. H. 0,2  
 Three-sided prism bead  
 From Epano Zakro

- a) A fish.
- b) A Cretan dog.
- c) Three suspended storage vessels.





217. Fitzwilliam 54. 1901  
Green-grey steatite  
 $\phi$  2,0 x 1,4. S. H. 0,4  
Flattened cylinder

- a) A group of seven concentric circles within a hatched border.  
b) A group of seven concentric circles within a hatched border.



MIDDLE MINOAN IIA

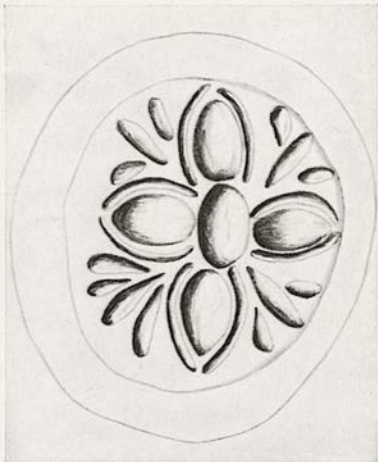
No. 218

MIDDLE MINOAN IIB

No. 219

MIDDLE MINOAN IIIA

No. 220



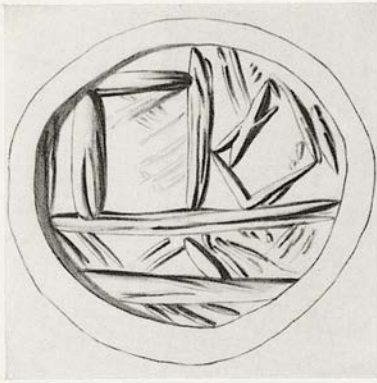
218. Fitzwilliam 2. 1951  
Clay of pale buff colour  
Imprint  $\phi$  1,8 x 1,5  
Sealing

Cruciform pattern of egg shaped forms outlined  
and interspersed with trifoliated groups.



219. Fitzwilliam 4 a. 1939  
 Yellow steatite  
 H. 1,0.  $\phi$  1,4. S. H. 0,3  
 Stalk signet

A cuttlefish.



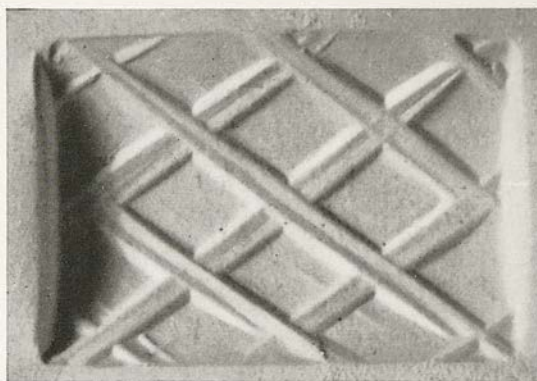
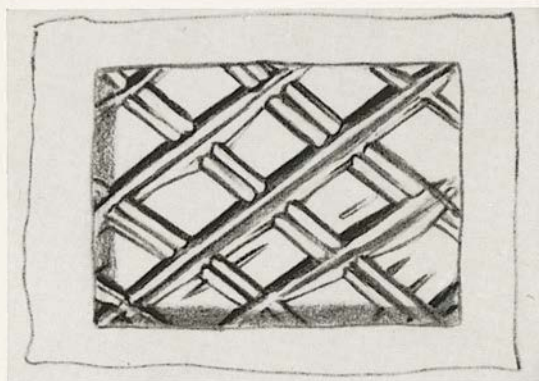
220. Fitzwilliam 67. 1901  
Green serpentine  
 $\phi$  1,8. S.H. 0,25  
Lentoid

Wall design.



SECOND TRANSITIONAL PHASE

No. 221

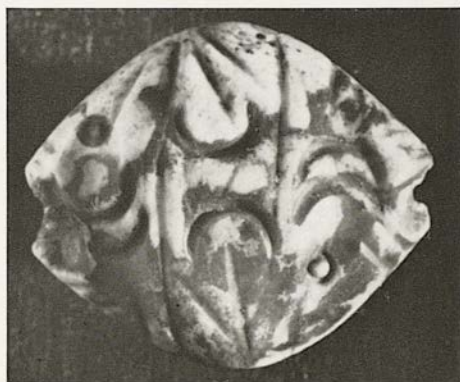
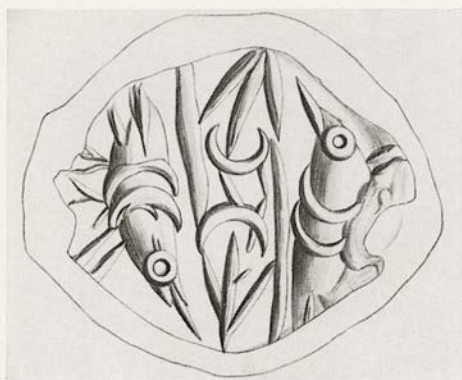


221. Fitzwilliam 15 c. 1901  
Opaque buff and purple jasper  
 $\phi$  1,5 x 1,0. S. H. 0,2  
Flattened cylinder

Diagonal hatching.

LATE MINOAN IA-B

Nos. 222-226



222. Fitzwilliam 66. 1901  
 Mottled jasper  
 $\phi$  1,9 x 1,6. S. H. 0,15  
 Glandular shaped seal  
 From East Crete

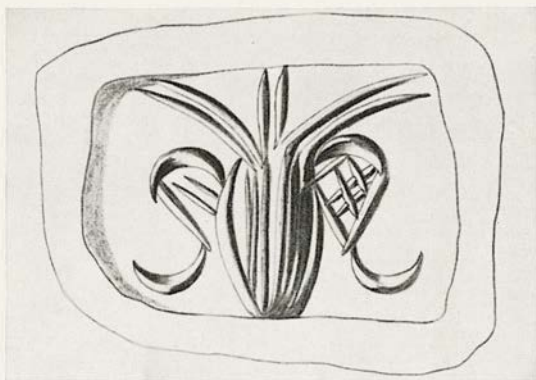
Foreparts of two fish antithetically disposed with talismanic filling marks.





223. Fitzwilliam 62. 1901  
Cornelian  
 $\phi$  2,1 x 1,5. S. H. 0,2  
Glandular shaped seal

Two headless scorpions antithetically and diagonally disposed.



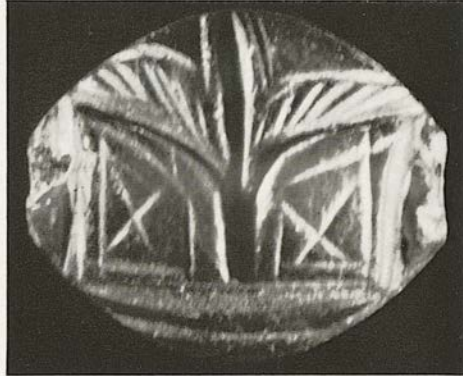
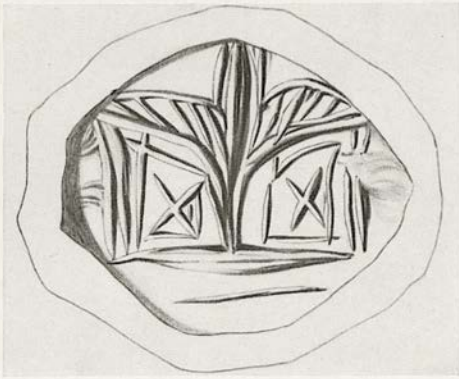
224. Fitzwilliam 56. 1901  
Cornelian  
 $\phi$  1,2 x 0,9. S. H. 0,1  
Flattened cylinder

A beetle or crustacean with talismanic characteristics.



225. Fitzwilliam 61. 1901  
 Cornelian  
 $\phi$  1,95 x 1,3. S. H. 0,15  
 Glandular shaped seal

Ivy leaf or silphium seed with talismanic marks.



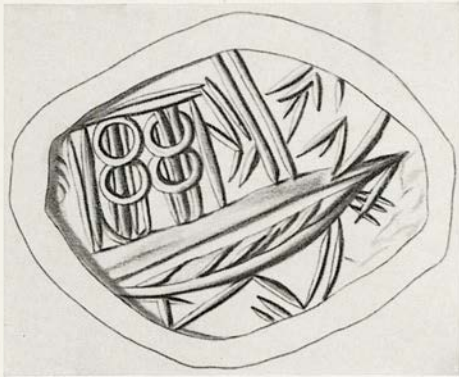
226. Fitzwilliam 15. 1938  
 Cornelian  
 $\phi$  1,4 x 1,1. S. H. 0,15  
 Amygdaloid

Flying bird emblem with talismanic characteristics.



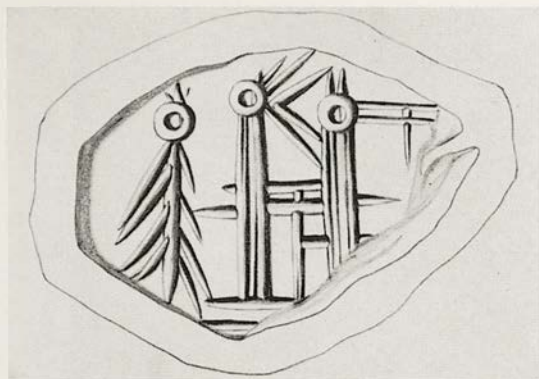
LATE MINOAN IB

Nos. 227-232



227. Fitzwilliam 58. 1901  
 Red cornelian, black speckled  
 $\phi$  1,8 x 1,5. S. H. 0,12  
 Glandular shaped seal  
 From Palaikastro

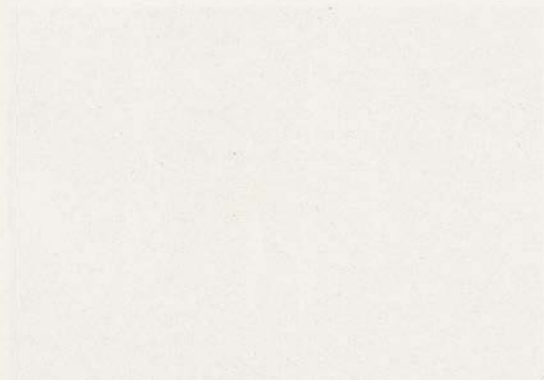
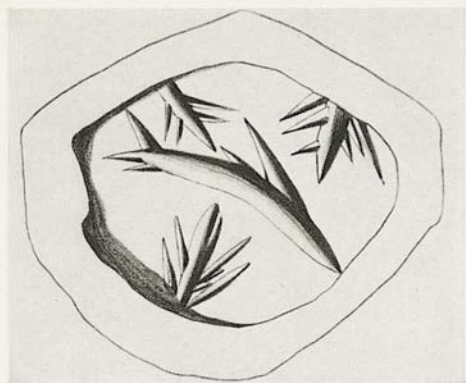
A ship with cargo at sea. A talismanic spray aloft.



228. Fitzwilliam 57. 1901  
 Cornelian  
 $\phi$  1,7 x 1,1. S. H. 0,15  
 Truncated amygdaloid

A schematic design of talismanic character perhaps an inverted plant spray by an empty well.





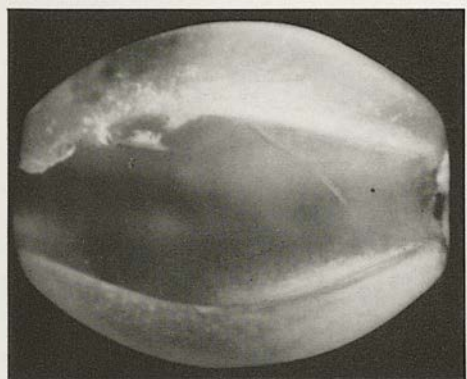
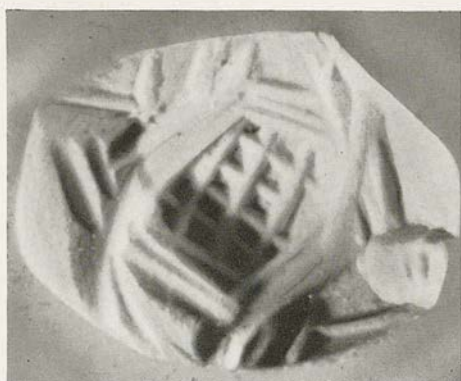
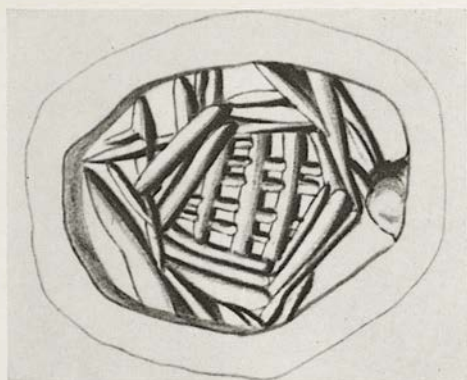
229. Fitzwilliam 65. 1901

Pink jasper

$\phi$  1,4 x 1,2. S. H. 0,2

Truncated amygdaloid

A fish with three talismanic sprays.



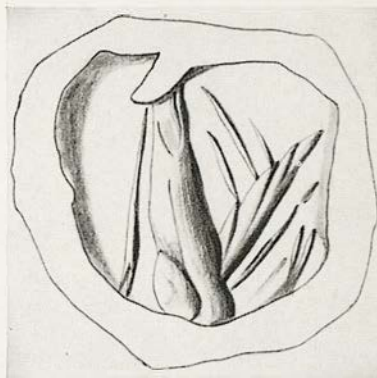
230. Fitzwilliam 52. 1901

Cornelian

$\phi$  0,85 x 0,6. S. H. 0,12

Glandular shaped seal with faceted back

Talismanic motif derived from two fish antithetically disposed with cross hatching and vegetable sprays between.



231. Fitzwilliam 51. 1901  
Cornelian  
 $\phi$  0,95. S.H. 0,15  
Lentoid

Talismanic schema of ascending members from a ground line.

232. Fitzwilliam 15. 1938  
Cornelian  
 $\phi$  1,1  $\times$  1,1. S.H. 0,12  
Part of a glandular shaped seal

Growing vegetation with talismanic characteristics.

LATE MINOAN II

No. 233





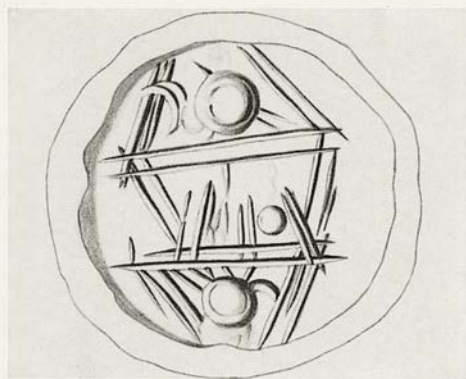
233. Fitzwilliam 2. 1961  
 Black jasper  
 $\phi$  2,0 (S. H. not observable as stone is set  
 in a modern gold mount)  
 Lentoid

Goat to the right, regardant; another animal in  
 reduced size above.

Given by Mrs. Pendlebury.

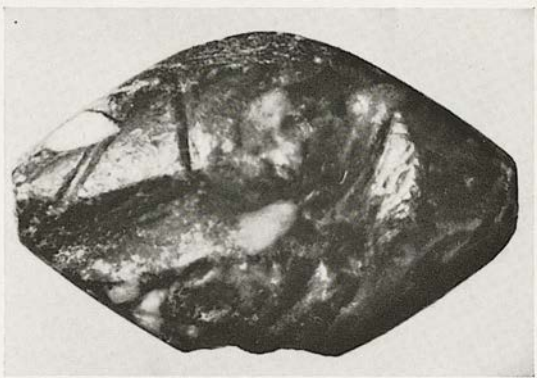
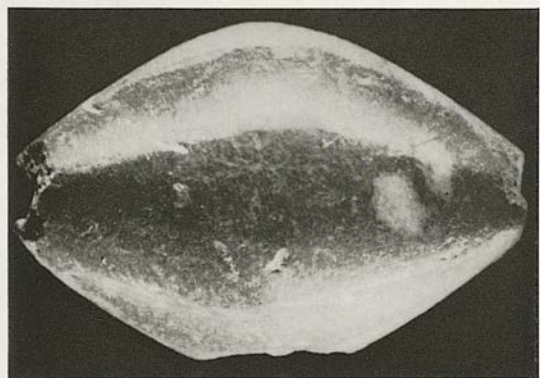
LATE MINOAN IIIA<sub>1</sub>

Nos. 234-238



234. Fitzwilliam 64. 1901  
Pale brown mottled agate  
 $\phi$  1,55. S. H. 0,15  
Lentoid

Talismanic schema of two crustaceans.



235. Fitzwilliam 14. 1938  
 Red basalt  
 $\phi$  2,6  $\times$  1,8. S. H. 0,15  
 Amygdaloid with faceted back  
 From Hellenika

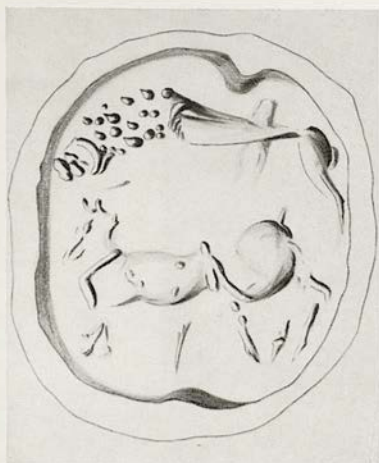
Lion to the left; struck with a spear.





236. Fitzwilliam 118. 1937  
Sapphirine chalcedony  
 $\phi$  2,2. Th. 1,05. S. H. 0,17  
Lentoid

Cow licking calf.



237. Fitzwilliam 60. 1901  
Grey-green marble  
 $\phi$  2,3-2,4. S. H. 0,2  
Lentoid  
Much worn

Lion attacking a bull to the left.



238. Fitzwilliam 4. 1939  
 Black and green steatite or marble  
 $\phi$  1,6–1,7. S. H. 0,15  
 Lentoid  
 From north of the Palace at Knossos

Two lions running to the right, disposed round the field.

LATE MINOAN IIIA<sub>2</sub>

Nos. 239-240



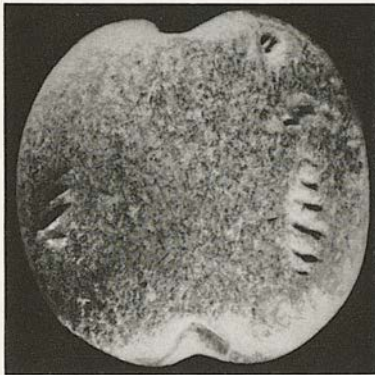
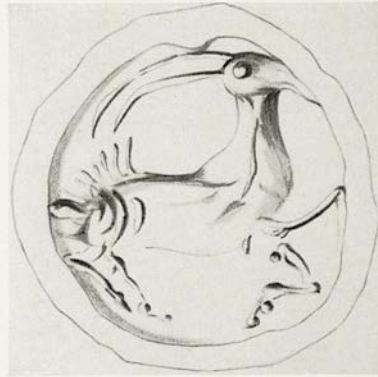
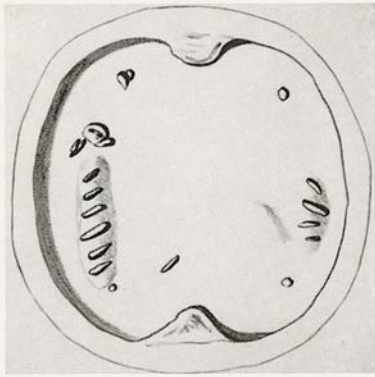


239. Fitzwilliam 68. 1901  
 Grey steatite  
 $\phi$  1,6. S. H. 0,2  
 Lentoid  
 Cretan goat to the right; plant before.

240. Fitzwilliam 11. 1938  
 Grey-green steatite  
 $\phi$  1,5-1,7. S. H. 0,15  
 Lentoid  
 From Hellenika  
 Winged griffin to the left.

LATE MINOAN IIIB

Nos. 241-245



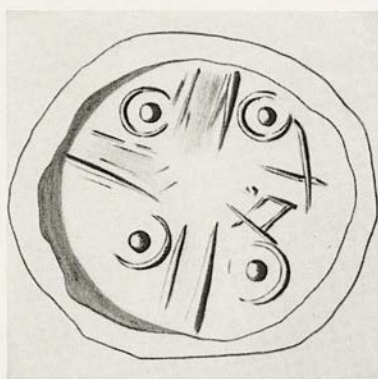
241. Fitzwilliam 53. 1901  
 Grey steatite  
 $\phi$  1,7. S. H. 0,2  
 Lentoid  
 Much worn

242. Fitzwilliam 12. 1938  
 Black marble  
 $\phi$  1,5-1,7. S. H. 0,2  
 Lentoid

Two women dancing.

Long horned Cretan goat to the right.





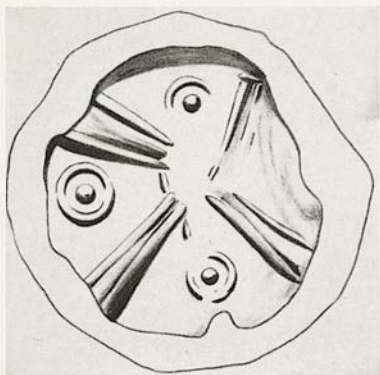
243. Fitzwilliam 13. 1938  
 Grey steatite  
 $\phi$  1,4. S. H. 0,2  
 Lentoid

Dappled stag running to the right.

244. Fitzwilliam 59. 1901  
 Green steatite  
 $\phi$  1,2-1,3. S. H. 0,15  
 Lentoid

Four concentric circles with pairs of engraved lines between.





245. Fitzwilliam 16. 1938  
Black steatite  
 $\phi$  1,1. S. H. 0,1  
Lentoid

Three concentric circles with four groups of engraved lines between.