

BRITISH MUSEUM, LONDON  
GREEK AND ROMAN DEPARTMENT



EARLY MINOAN III

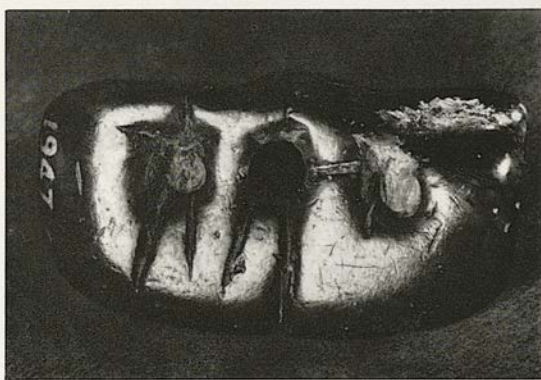
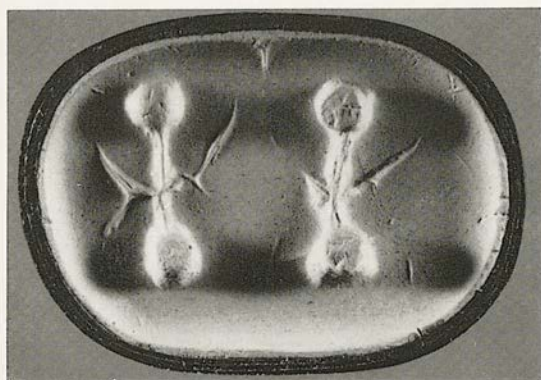
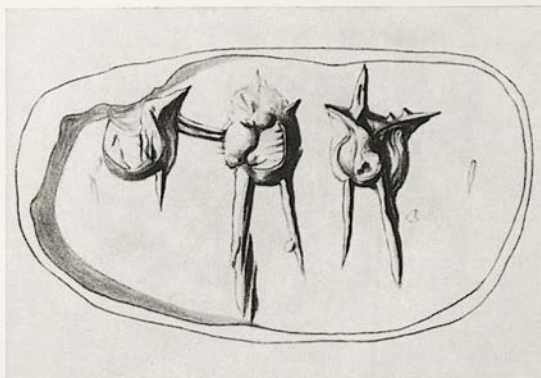
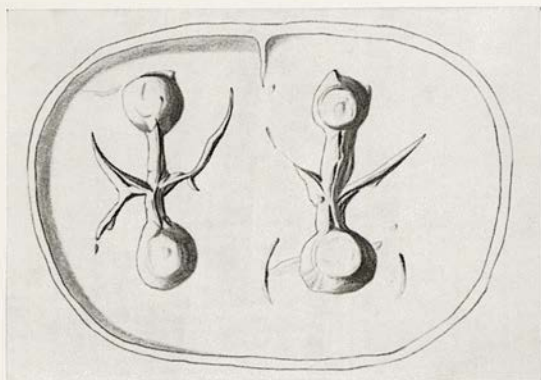
Nos. 1-7



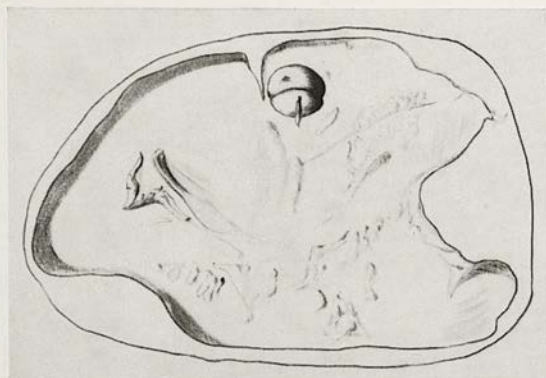




1. B. M. (GR/R) 1947. 9-26. 38  
 Reddish-brown steatite  
 Ht. 1,8. Base 1,5×1,2. S. H. 0,3  
 Pyramidal pendant engraved on the base  
 Cretan goat to the left. A bird in the field.  
 Kenna, *Seals* 20 note 3; 72.



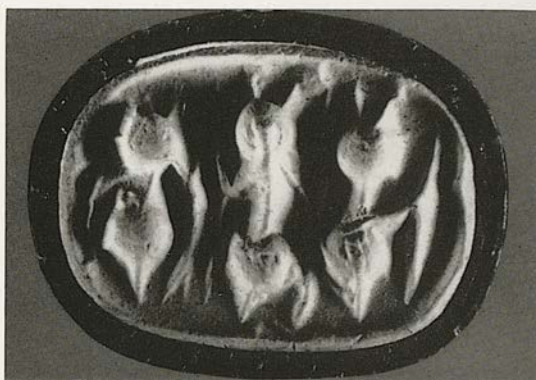
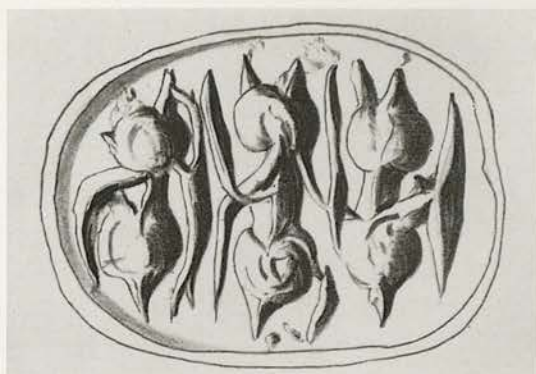
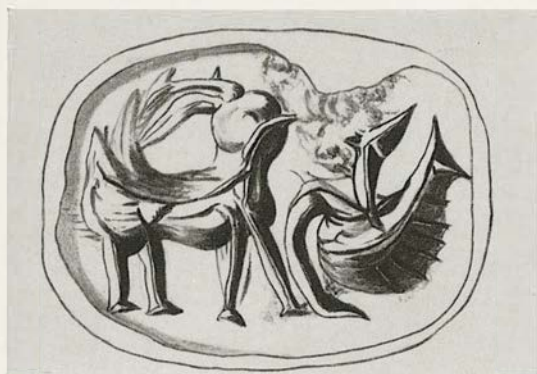




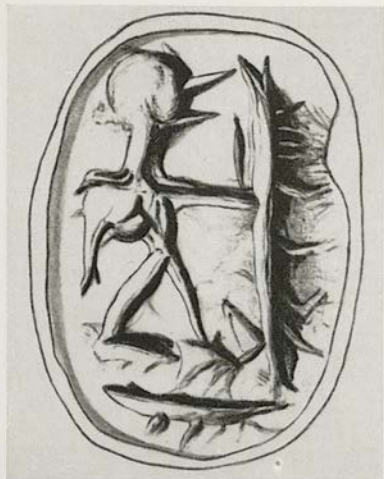
2. B. M. (GR/R) 1947. 9-26. 12  
 Dark grey-green steatite  
 L. 2,7. W. 1,7; 1,5; 1,8. S. H. 0,3  
 Three-sided prism bead

- a) Two groups of drill marks joined by channels from which emerge members as limbs. These forms may represent two insects like ants.  
 b) Three cup sinkings representing storage vessels suspended for carriage. The central cup sinking or drill hole has engaged the main string hole at right angles and also shows signs of string wear.  
 c) Remains of three cup sinkings radially disposed on the field. The motif or subject is both unknown and unparalleled.

Kenna, *Seals* 72.







3. B.M. (GR/R) 1947. 9-26. 3

Green-brown steatite

L. 1,5. W. 1,0; 1,1; 1,1. S.H. 0,2

Three-sided prism bead with a line incised  
round each edge of the stone

- a) Cretan goat and bird in reversed positions.
- b) Man with branch or pole; under his feet another quantity.
- c) Three insects.





4. B. M. (GR/R) 1947. 9-26. 4

Yellow steatite

L. 1,0. W. 1,2; 1,3; 1,2. S.H. 0,2-0,3

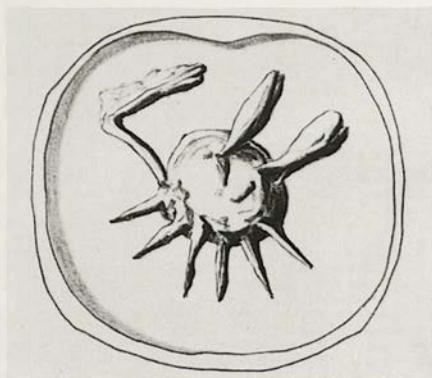
Three-sided prism bead

- a) Two objects or quantities of uncertain character.
- b) Two sitting birds antithetically disposed.
- c) Six birds with long necks. Cf. Kenna, *Seals* 90 no. 22.









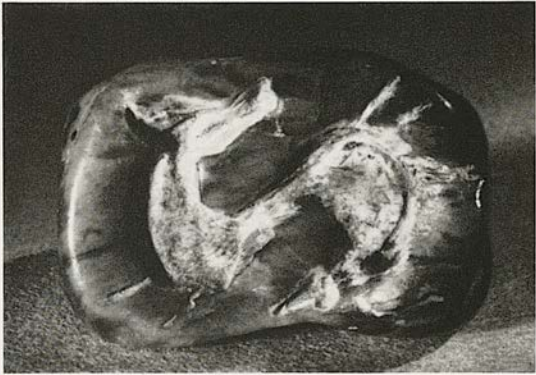
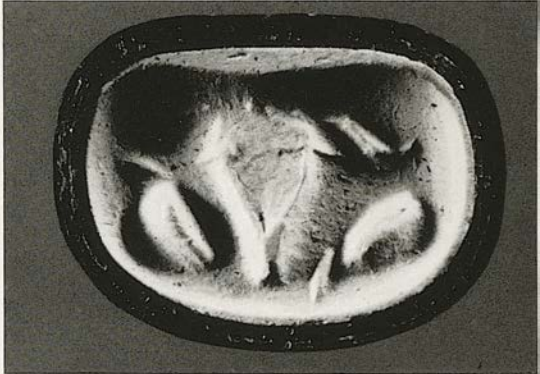
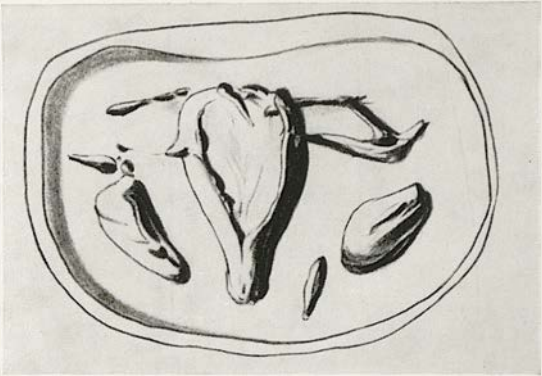
5. B.M. (GR/R) 1947. 9-26. 9

Brown steatite

L. 1,3. W. 1,2; 1,2; 1,2. S.H. 0,2

Three-sided prism bead

- a) An insect possibly a scorpion, the bent member representing the tail.
- b) Cretan dog.
- c) Double sickle with two intermediate toothed members.



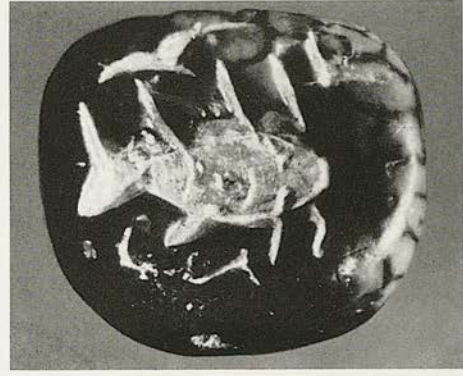
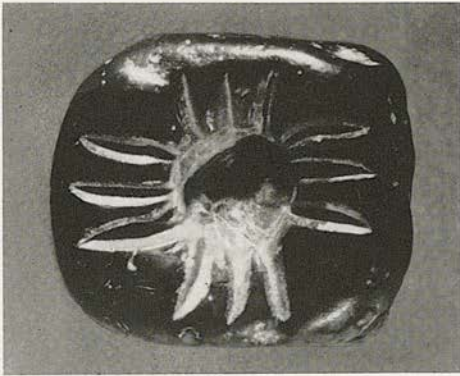
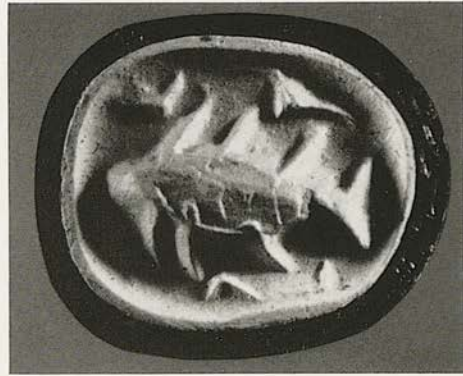
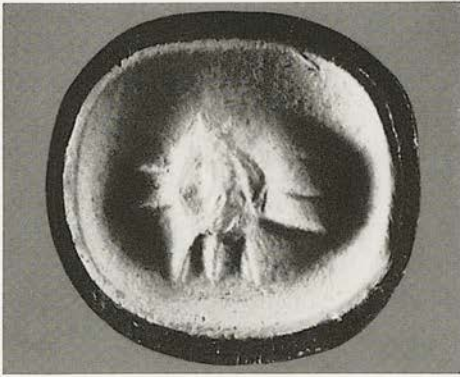
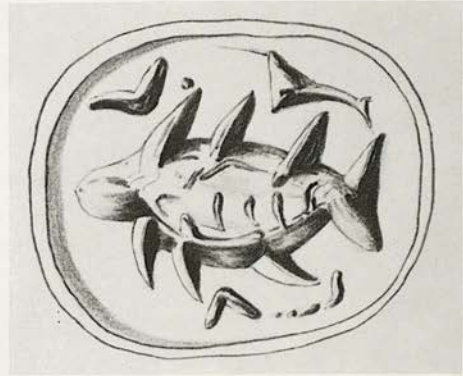
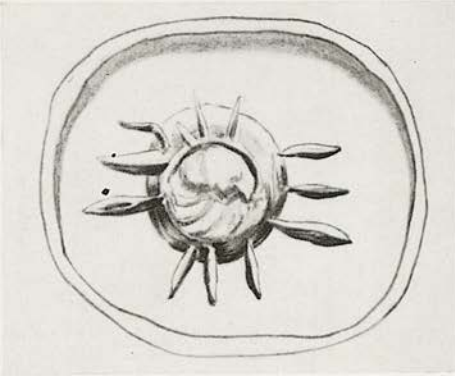


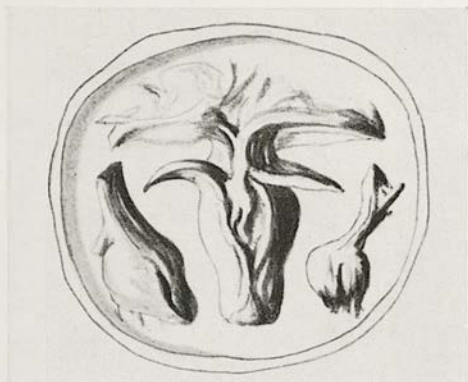
6. B. M. (GR/R) 1947. 9-26. 2  
 Buff and green steatite  
 L. 1,5. W. 1,2; 1,0; 1,0. S.H. 0,2  
 Three-sided prism bead

- a) Cretan dog.
- b) A man in squatting position.
- c) Bucranium. Possibly remains of two smaller bucrania in the field.

Kenna, *Seals* 22 note 3.







7. B. M. (GR/R) 1947. 9-26. 5  
 Black and white mottled steatite  
 L. 1,0. W. 1,2; 1,2; 1,2. S. H. 0,2  
 Three-sided prism bead

- a) A star or representation of sun.
- b) A fish. Three chevrons in the field.
- c) Bucranium. Cf. Evans, *PM.* I 125 fig. 93 B.  
 Two other objects in the field may be flasks of  
 skin or of clay.

Kenna, *Seals* 22 note 3.

FIRST TRANSITIONAL PHASE

No. 8





8. B. M. (GR/R) 1934. 11-20. 2  
 Black and white mottled steatite  
 L. 1,4. W. 1,5; 1,5; 1,7. S. H. 0,3  
 Three-sided prism bead

- a) Three vases, or one vase with two wine skins.  
 c) Bucranium with two ants or insects.



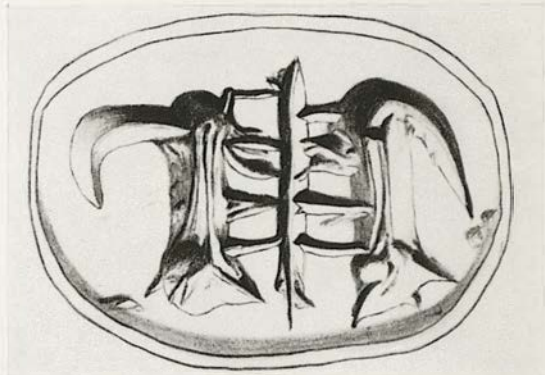
8. B. M. (GR/R) 1934. 11-20. 2  
Black and white mottled steatite  
L. 1,4. W. 1,5; 1,5; 1,7. S.H. 0,3  
Three-sided prism bead

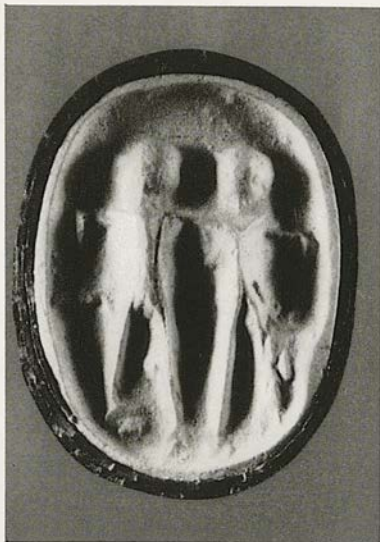
b) Long necked bird surrounded by a hatched band. Hatching irregular.



MIDDLE MINOAN I

Nos. 9-27



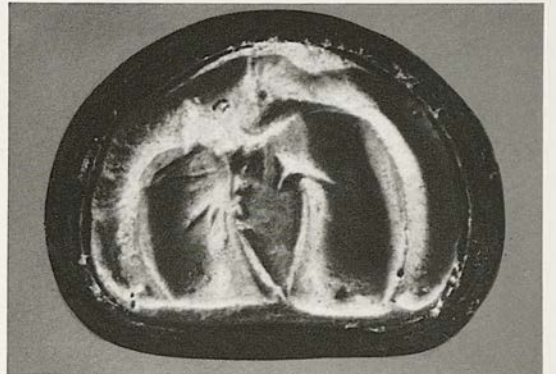
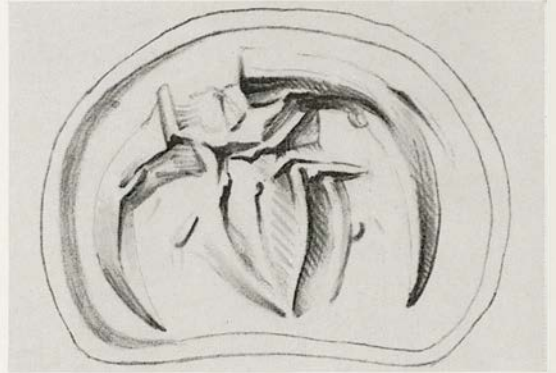
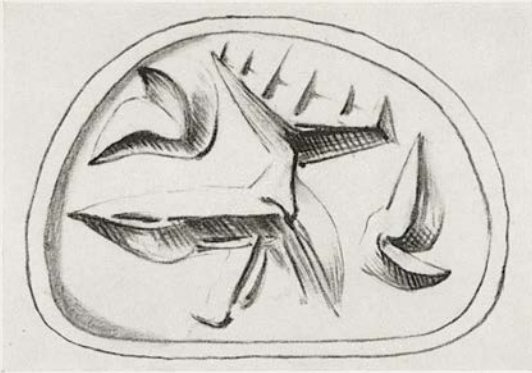


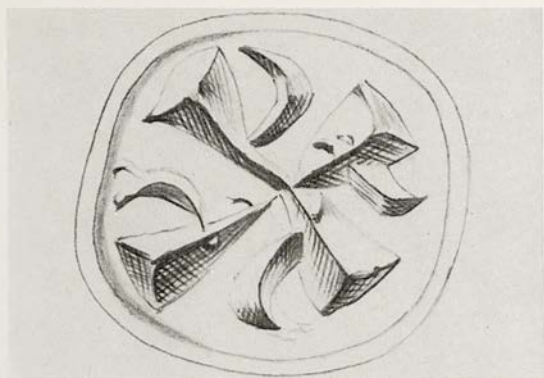
9. B.M. (GR/R) 1947. 9-26. 1  
 Yellow steatite  
 L. 1,6. W. 1,2; 1,2; 1,1. S.H. 0,2  
 Three-sided prism bead

- a) An ox whose body is bent to a right angled shape.  
 b) Two men who appear joined together hand in hand.  
 c) Two bucrania joined by a branch.

Kenna, *Seals* 21 note 4.



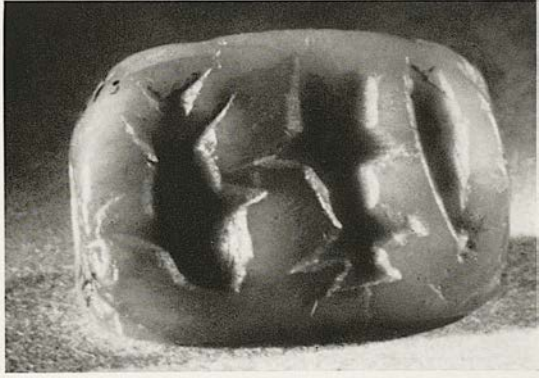
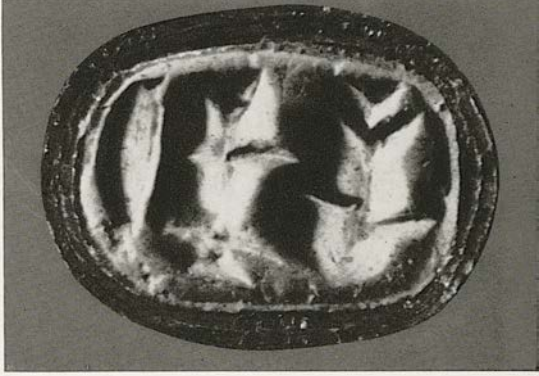
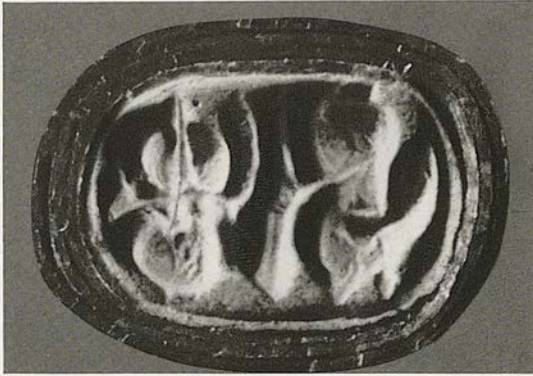
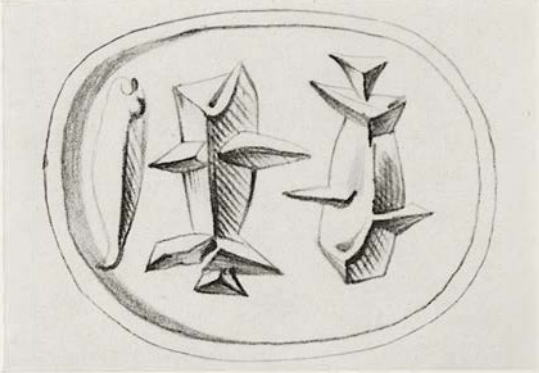
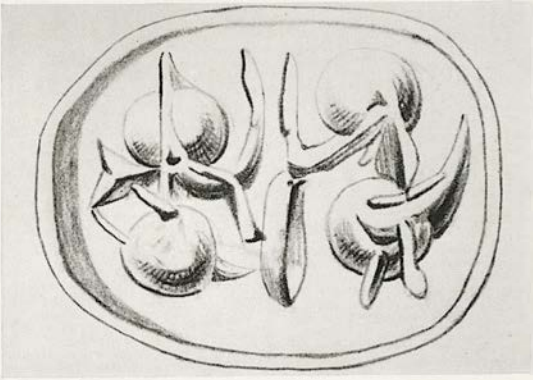




10. B.M. (GR/R) 1936. 7-21. 2  
 Yellow buff steatite  
 L. 1,1. W. 0,9; 0,9; 0,9. S.H. 0,25  
 Three-sided prism bead

- a) Plant forms, perhaps papyrus in flower.  
 b) Bucranium.  
 c) Cross of four wedges acquiring a torsive quality by the addition of a lunette to each member.

Kenna, *Seals* 21 note 4.

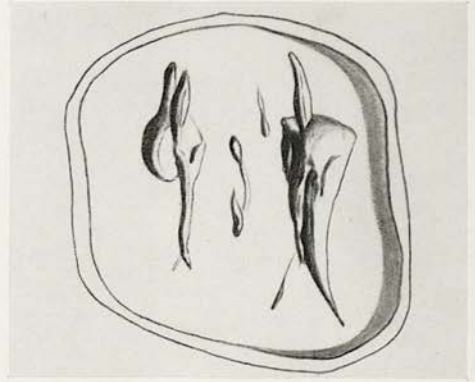
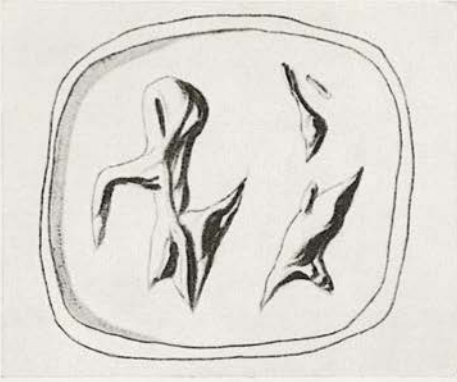




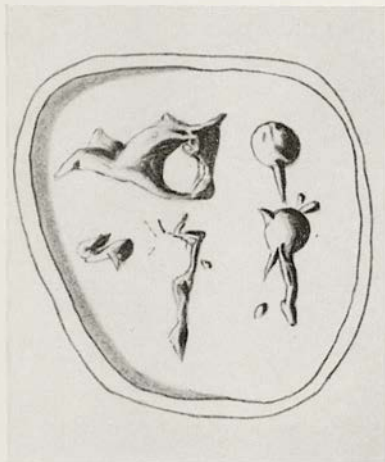


11. B.M. (GR/R) 1936. 7-21. 3  
 Pale green steatite  
 L. 1,0. W. 0,7; 0,7; 0,7. S.H. 0,15  
 Three-sided prism bead

- a) Two insects.  
 b) Three fish, of which one appears to be a sepia.  
 c) Man with waved object in left hand.

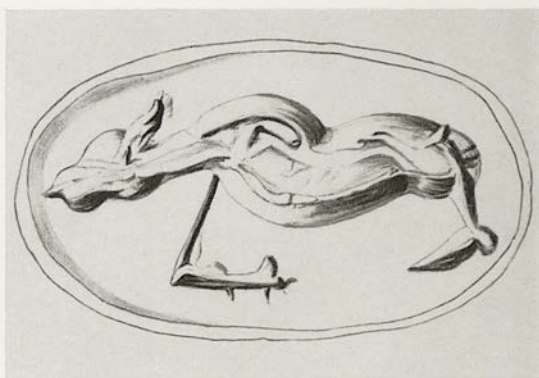
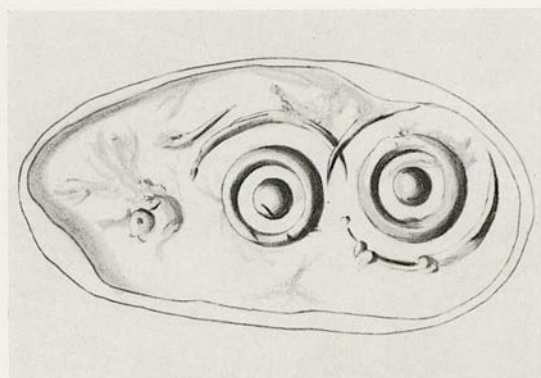


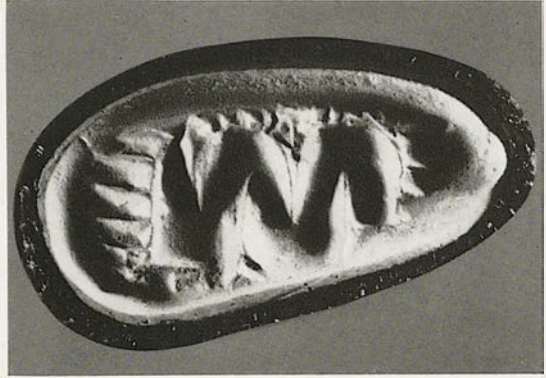
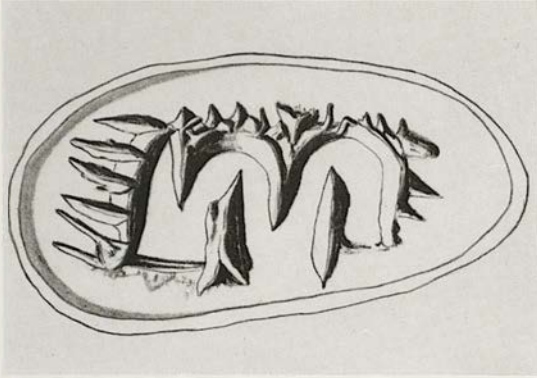




12. B.M. (GR/R) 1947. 9-26. 7  
 Buff marble with black veining  
 L. 1,1. W. 1,2; 1,1; 1,1. S.H. 0,25  
 Three-sided prism bead

- a) A man faces an unknown object to the left.  
 b) Remains of two objects, possibly men.  
 c) Man with carrier pole and vessels.





13. B. M. (GR/R) 1947. 9-24. 9

Yellow brown steatite

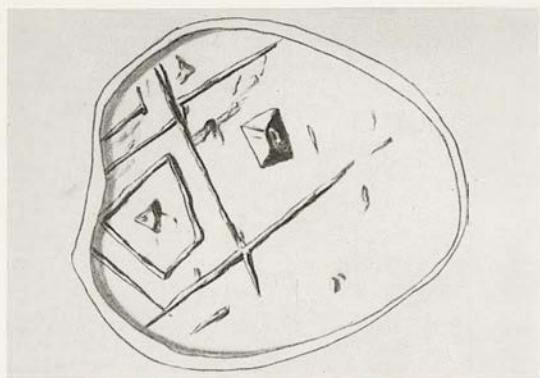
L. 2,2. W. 1,0; 1,2; 1,0. S.H. 0,3

Three-sided prism bead

- a) Three groups of concentric circles centred in each case by one cup sinking.
- b) A bull, one fore and hind leg shown bent inwards.
- c) Bucranium between two branches or enclosures.

Kenna, *Seals* 34.

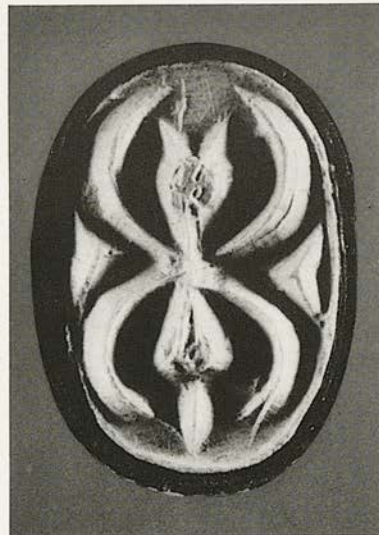
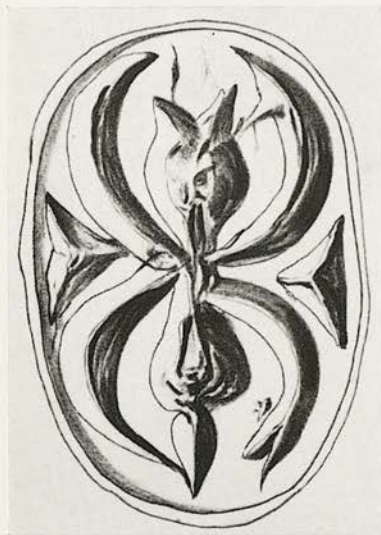




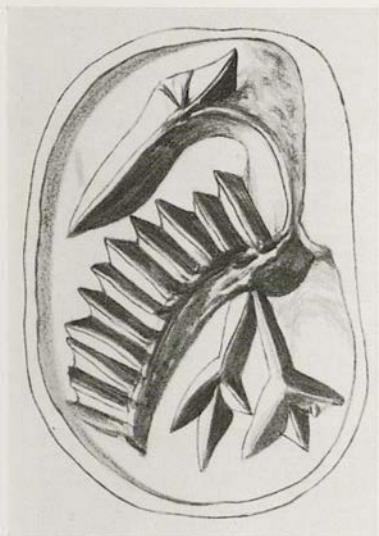
14. B.M. (GR/R) 1909. 4-9. 6  
 Red and black mottled steatite  
 H. 1,2. W. a) 1,5×1,4; b) 1,5×1,0  
 Pendent seal in the shape of a drinking cup  
 with rim and handle.  
 Engraved on both faces

- a) Within a lattice pattern, squares with a central point alternating with engraved triangles.  
 b) Engraved triangles and a square having incurved sides with tubular drill marks in an overall pattern.



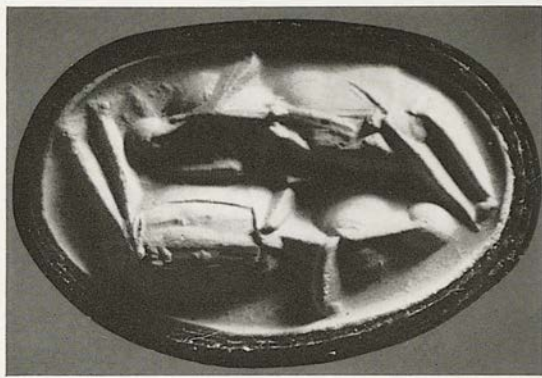
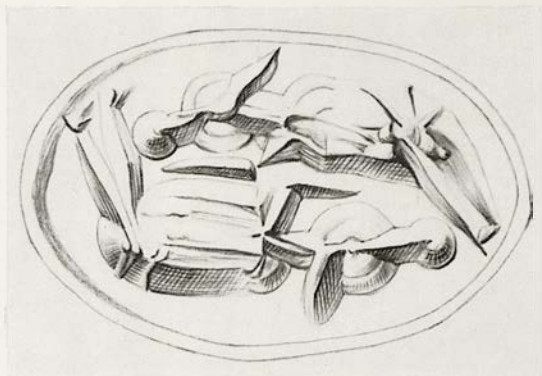




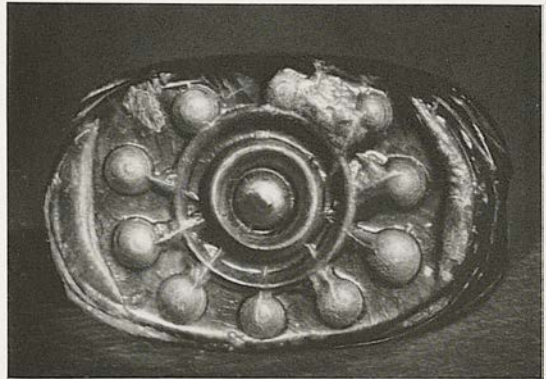
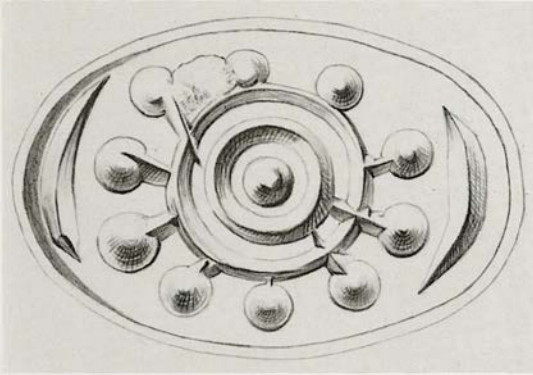


15. B. M. (GR/R) 1934. 1-20. 6  
 Green-brown steatite  
 L. 1,6. W. 1,1; 1,1; 1,1. S.H. 0,2  
 Three-sided prism bead

- a) A man bends down towards a toothed object  
 or fence.  
 b) An insect, perhaps a bee.  
 c) A bird with long beak and wide wing.



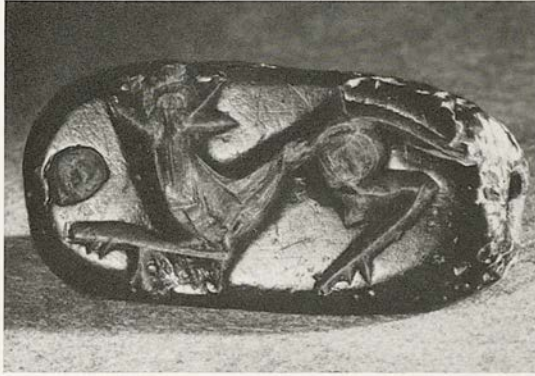
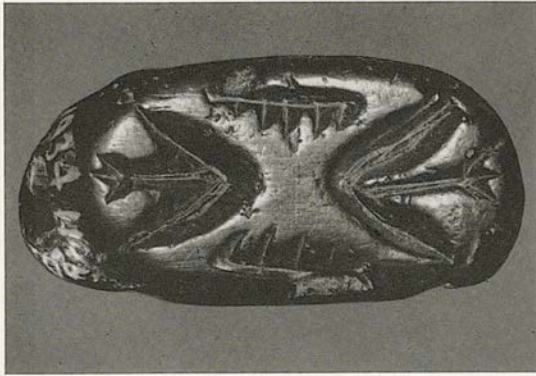
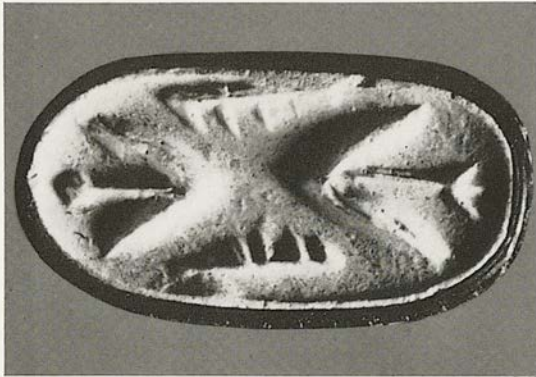
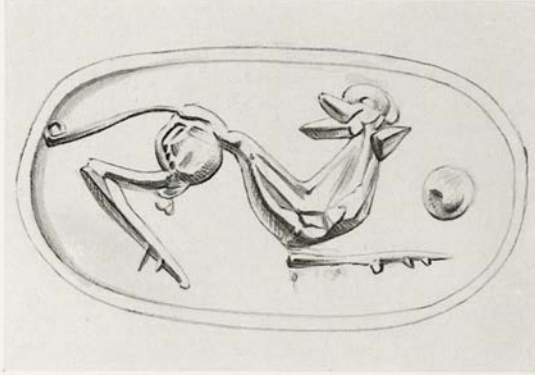
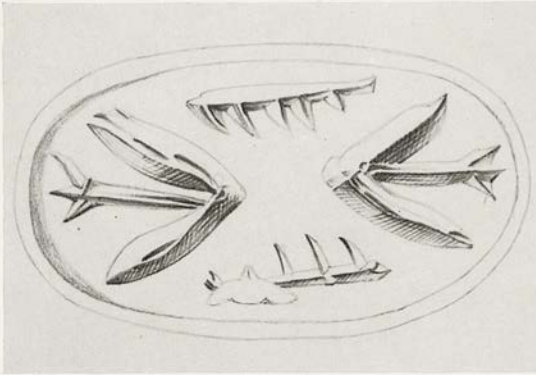


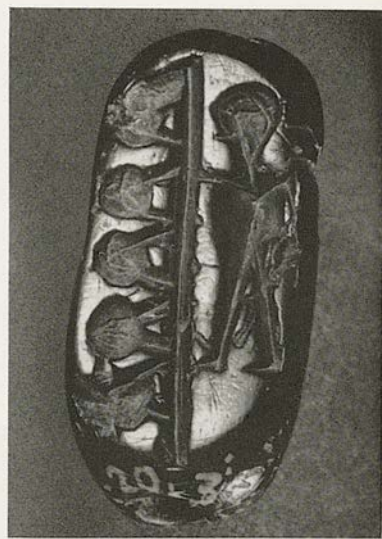
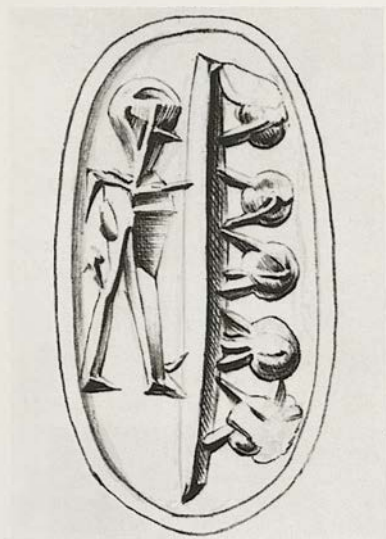


16. B.M. (GR/R) 1876. 5-13. 5  
 Black mottled steatite or marble  
 L. 1,5. W. 1,3; 1,3; 1,3. S. H. 0,2-0,25  
 Three-sided prism bead

- a) Two men crouching.  
 b) Two oxen in antithetic positions.  
 c) Two concentric circles, the outer radiated with cup sinkings. A lunette at either end of the field.

Milchhoefer, *Anfänge* 180 fig. 66. Walters, *Cat.* no. 25.





17. B. M. (GR/R) 1934. 11-20. 3

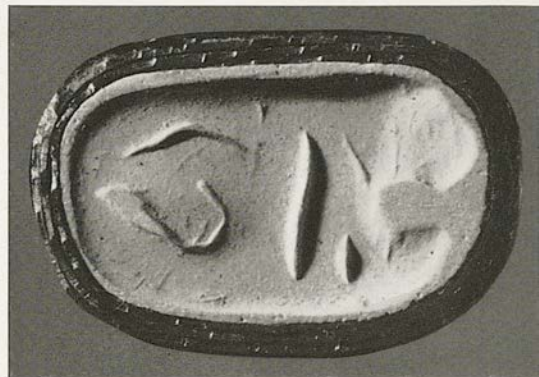
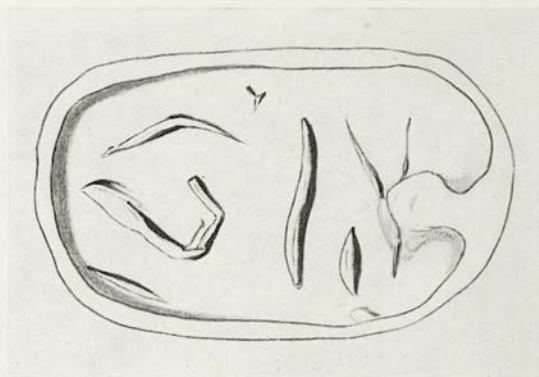
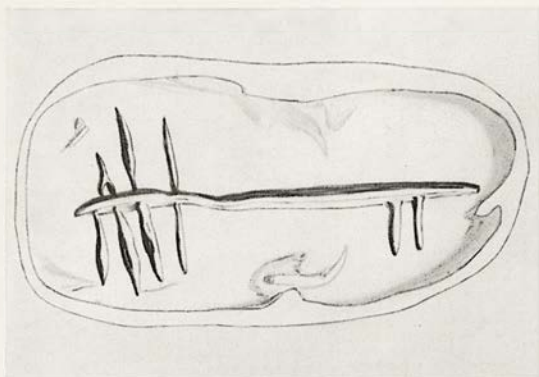
Black steatite or marble

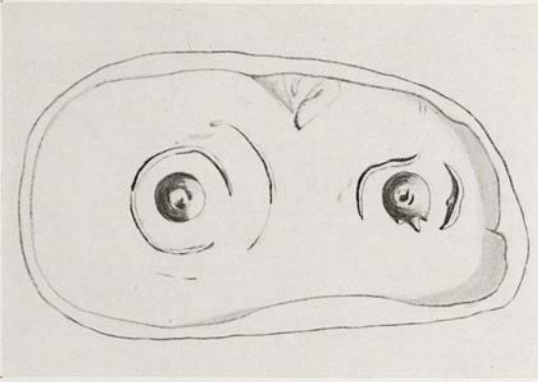
L. 2,0. W. 0,85; 0,85; 0,85. S.H. 0,3

Three-sided prism bead

- a) Two arrow heads which have shortened feathered tails pointing inwards. Two branches in the field.
- b) A man with a pole and five storage vessels.
- c) A Cretan dog with a round object in the field, perhaps a ball.

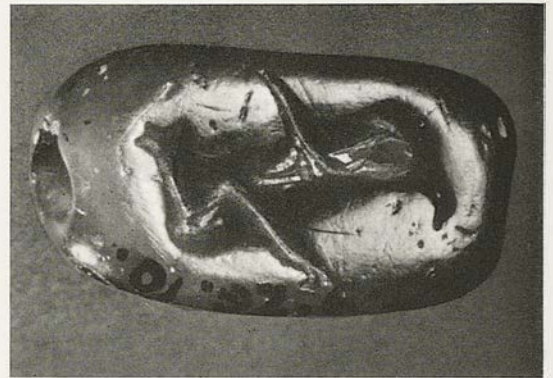
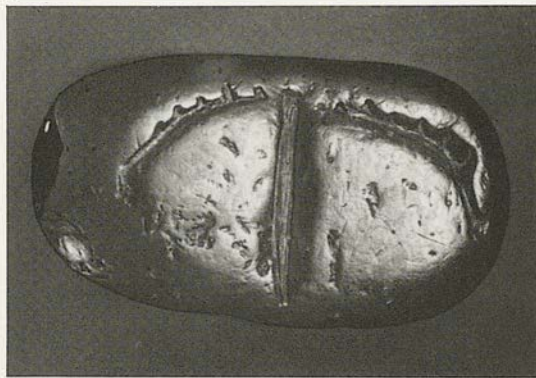
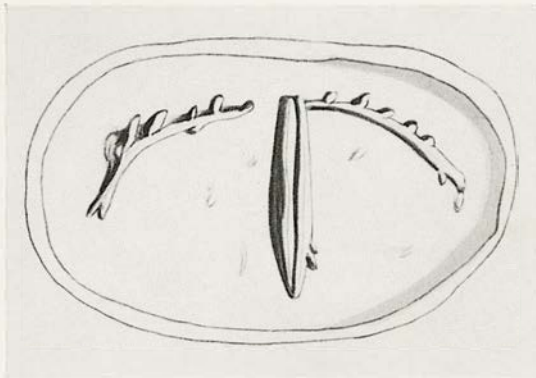




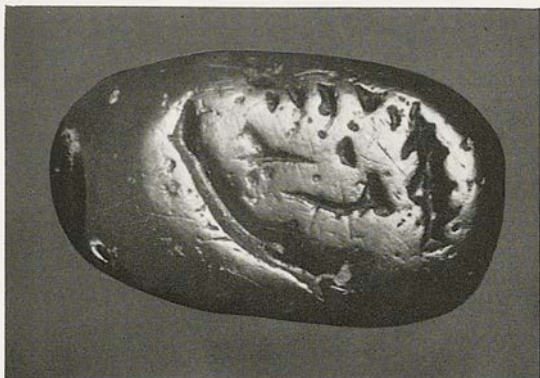
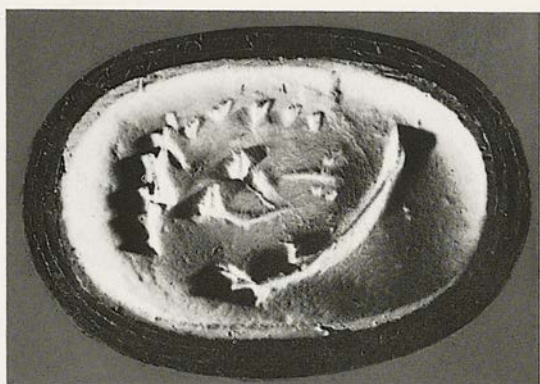
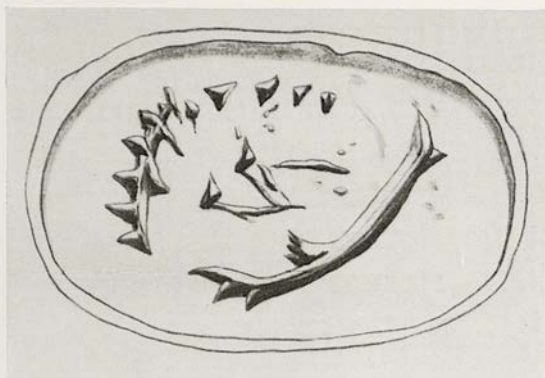


18. B. M. (GR/R) 1947. 9-26. 11  
 Black mottled steatite  
 L. 1,8. W. 0,9; 0,9; 0,9. S. H. 0,35  
 Three-sided prism bead

- a) A line or bar horizontal to the field. From each end on either side spring groups of branches. Between the groups are the remains of two other unidentifiable objects.
- b) Two bucrania in antithetic position, perhaps separated.
- c) Two groups of concentric curves with a centre cup sinking.

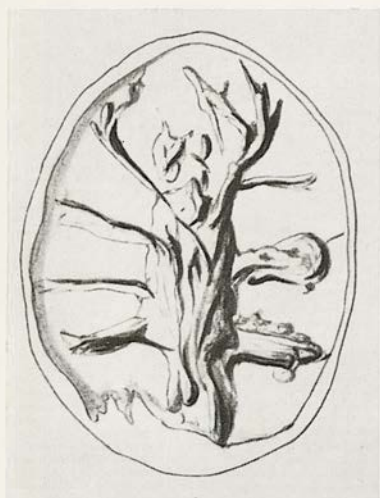






19. B.M. (GR/R) 1947. 9-26. 10  
 Translucent green steatite; but not of uniform colour  
 L. 1,5. W. 0,9; 0,8; 0,9. S. H. 0,25  
 Three-sided prism bead

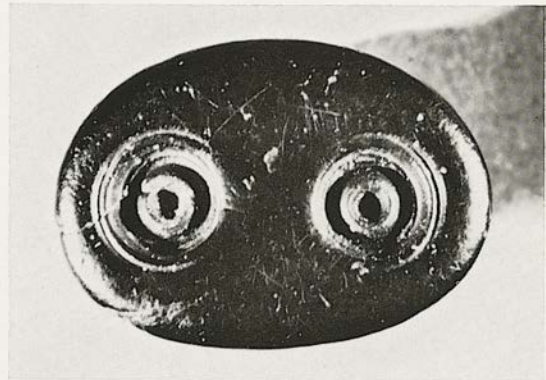
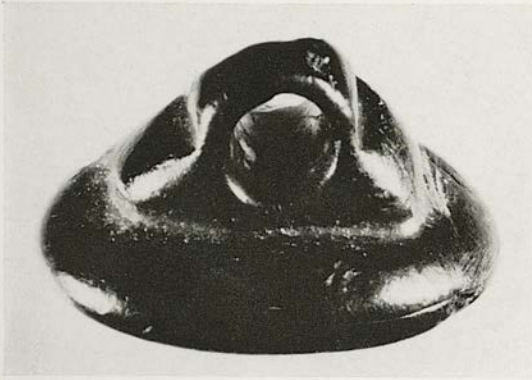
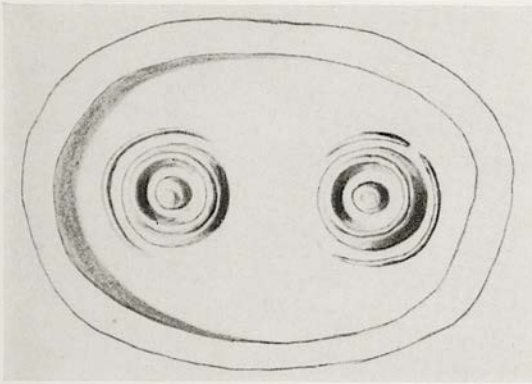
a) Stylized bucranium with elongated horns.  
 b) An animal of which one back and one foreleg are shown splayed above and below. The style and technique suggest subsequent work on the original form.  
 c) To the left the remains of a curved and horned branch. Another object which may be a fish. Marks in the field between the objects either accidental scratches or later attempts to fill the worn part of the field.



20. B. M. (GR/R) 1930. 12-15. 8  
 Black steatite or marble  
 L. 1,5.  $\phi$  a) 1,2  $\times$  0,9; b) 1,1  $\times$  0,9. S. H. 0,1  
 Elongated reel

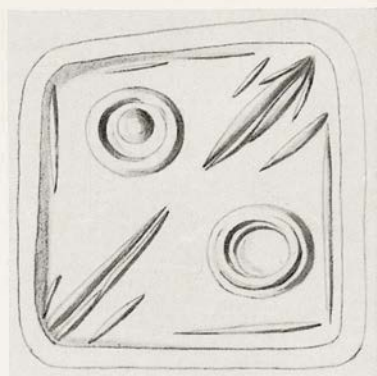
- a) A tailless scorpion.  
 b) Three cup sinkings and the remains of another object, possibly a figure.





21. B. M. (GR/R) 1966. 9-29. 1  
 Black marble  
 $\phi$  1,05 x 0,7. H. 0,8. S. H. 0,2  
 Elliptical button shaped seal with knob for  
 stringhole; the field is kidney shaped  
 Two groups of tubular drill marks with a central  
 hole.





22. B. M. (GR/R) 1885. 12-13. 65  
 Serpentine  
 $\phi$  1,1 x 1,0. H. 1,2. S. H. 0,2  
 Pyramidal shaped seal with knob for string-  
 hole  
 From Rhodes

Two groups of tubular drill marks, one with a central hole, which out of centre has been engraved after the outer circle was made. The groups are diagonally arranged in the field, and from the opposite corners spring representations of plant forms.

From the Biliotti Collection.



23. B. M. (GR/R) 1882. 10-14. 10  
 Grey-green steatite or serpentine  
 $\phi$  1,7. H. 0,7. S.H. 0,2  
 Button shaped seal

Triskeles with curved members enclosing three groups of concentric circles and curved wedges.

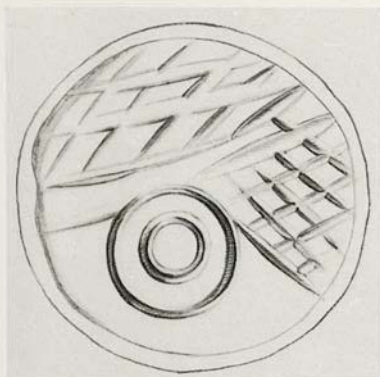
Walters, *Cat.* no. 6.



24. B. M. (GR/R) 1956. 6-30. 1  
 Grey-green steatite  
 $\phi$  1,3. H. 0,7. S. H. 0,15  
 Button shaped seal

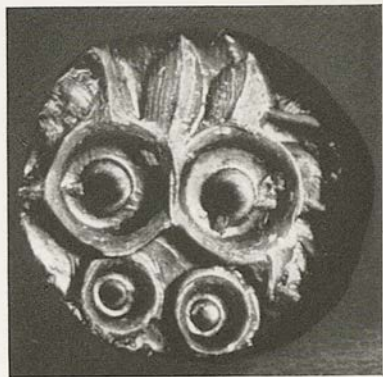
An S-spiral bent back on itself to form a leaf design; other smaller leaves in the field.





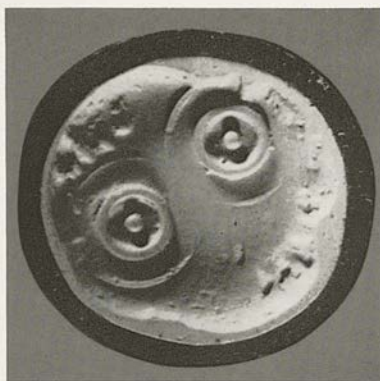
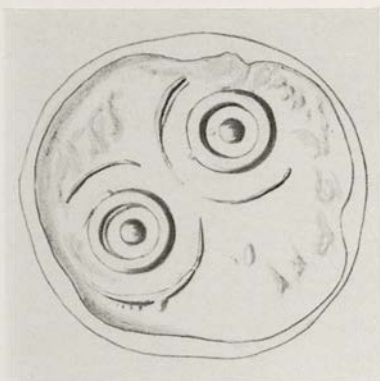
25. B. M. (GR/R) 1934. 11-20. 7  
 Yellow-brown steatite of uniform colour  
 $\phi$  1,6. Th. 0,6. S. H. 0,2  
 Disc

- a) One group of concentric circles with two sets of cross hatching.  
 b) Two groups of concentric circles with one group of cross hatching.



26. B. M. (Gr/R) 1934. 7-21. 5  
 Black steatite or marble  
 $\phi$  1,3. Th. 0,7. S. H. 0,25  
 Disc

- a) One group of circular drill marks out of centre and rayed. The central cup sinking is large and flat at bottom.
- b) Two groups of concentric circles disposed on the horizontal diameter. Adjoining and in the exergue are two others, smaller. Above three wheel cuts. Giving (on the stone) the impression of a lion's mask.



27. B. M. (GR/R) 1947. 9-26. 44

Brown steatite

$\phi$  1,4. S. H. 0,2

Lentoid

a) Two groups of concentric circles.

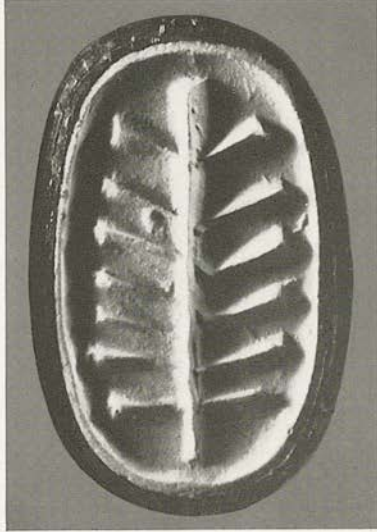
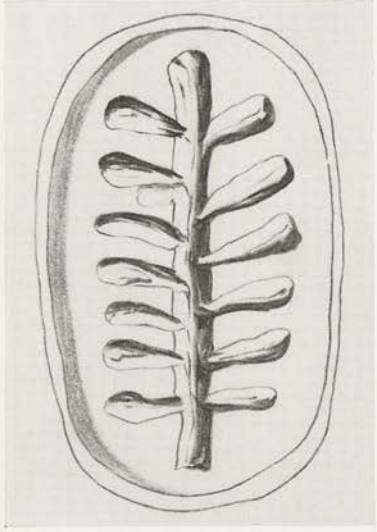
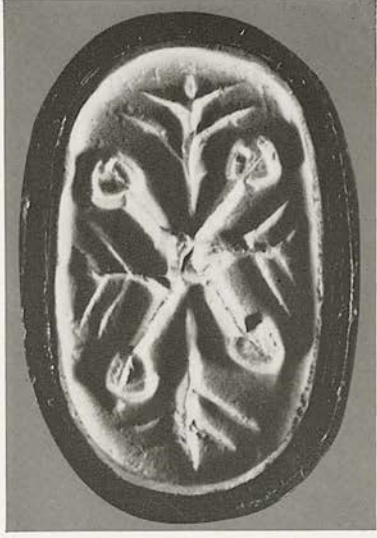
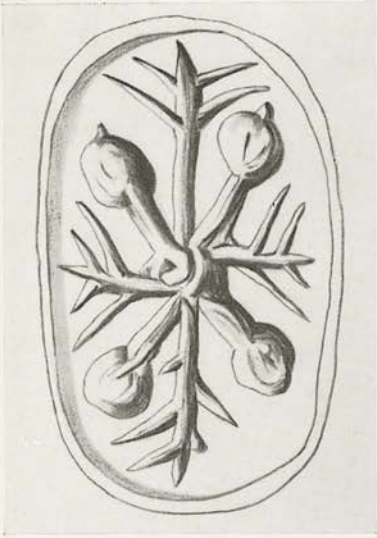
b) Two groups of concentric circles.





MIDDLE MINOAN IIA

Nos. 28-34

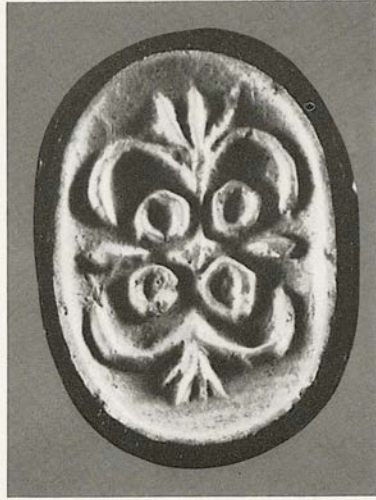
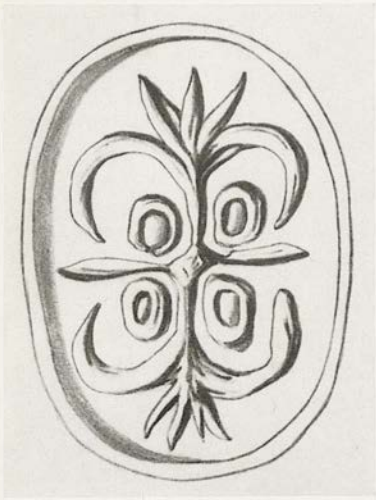


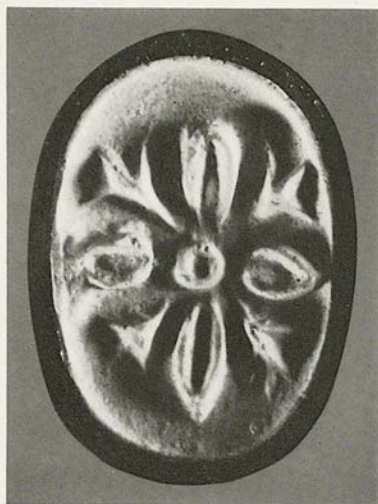




28. B. M. (GR/R) 1947. 9-26. 8  
 Cream and green steatite  
 L. 1,7. W. 1,0; 1,0; 1,0. S. H. 0,25  
 Three-sided prism bead

- a) Croix pommée irregular, with four branches intersecting.
- b) A stylized tree.
- c) Hieroglyphic signs. Cf. *CHIK*.





29. B.M. (GR/R) 1934. 11-20. 4

Pale green and cream steatite

L. 1,4. W. 1,0; 1,1; 1,1. S.H. 0,15

Three-sided prism bead

A line is incised around the edge of the stone

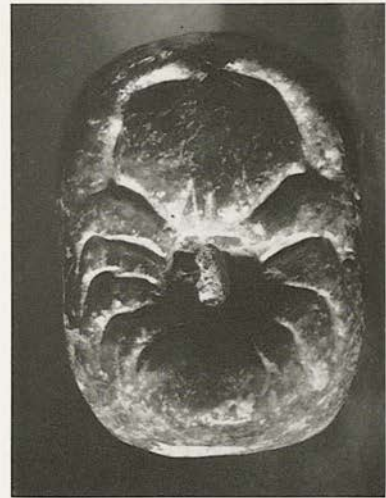
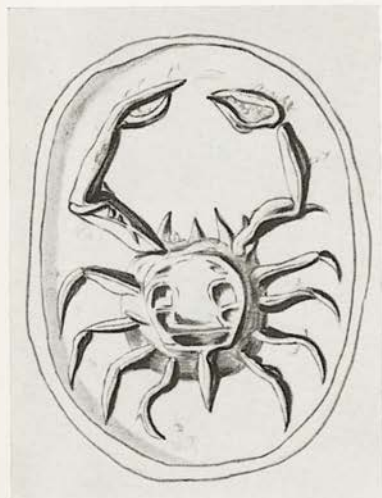
a) Two flowering sprays forming a cross with two cereal grains. The semi-circular leaves enclose four tubular drill marks.

b) A cereal grain above a chevron between two other grains and C-spirals.

c) A cross of four cereal grains centred by a tubular drill mark. Four sprays diagonally disposed.

Kenna, *Kadmos* 2, 1963, 2 seq. fig. 1 d.

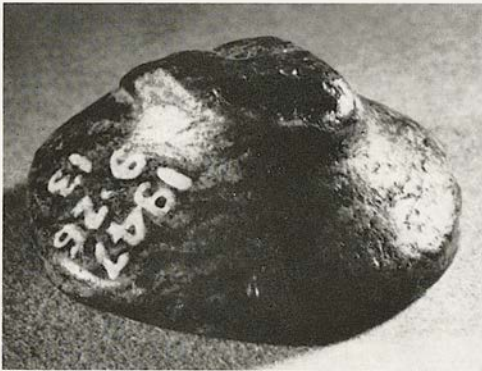






30. B.M. (GR/R) 1934. 1-20. 5  
 Green-brown and cream steatite  
 L. 1,5. W. 1,2; 1,2; 1,2. S.H. 0,15  
 Three-sided prism bead

- a) Three species of grain in the ear.
- b) A crab.
- c) An insect or grub with a branch each side.



31. B. M. (GR/R) 1947. 9-26. 13  
 Serpentine  
 $\phi$  1,6-1,7. H. 0,8  
 Button shaped seal (fractured stem now lost)

Three groups of cup sinkings and scored lines,  
 one of which resembles the double axe.





32. B. M. (GR/R) 1936. 7-21. 4  
 Brown translucent steatite  
 Base 1,1 x 0,9. H. 0,4  
 Gable shaped seal with articulated base.  
 The stringhole is drilled through the long  
 axis

Three hieroglyphic signs. Cf. *CHIK*.



33. B. M. (GR/R) 1956. 6-30. 2  
 Pale green jasper or marble  
 $\phi$  1,1. H. 1,1. S. H. 0,2  
 Stalk shaped signet  
 From the coast of Syria

A 'croix pommée' in a square formed by a schema of two sets of sheeps', two sets of bulls' horns. Cross hatching in the field.



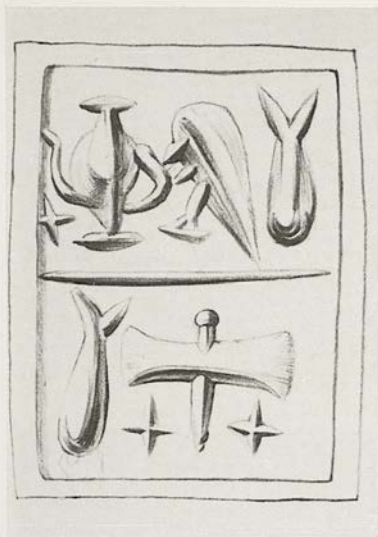
34. B.M. (GR/R) 1934. 11-20. 5  
 Pale green jasper or marble  
 $\phi$  1.2. H. 1.2. S.H. 0.2  
 Stalk shaped signet

A bucranium. Two small linear crosses in the field.



MIDDLE MINOAN IIB

No. 35



35. B. M. (GR/R) 1921. 7-11. 2  
 Grey and white banded agate  
 1,7 x 1,2. Th. 0,8. S. H. 0,2  
 Flattened cylinder  
 From Crete

a) Hieroglyphic signs in two registers. Cf. *CHIK*.  
 b) An ibex extended at speed in the 'Aegean gallop' attacked by a hound. Rocks in the field below are represented by a pattern of lunettes.

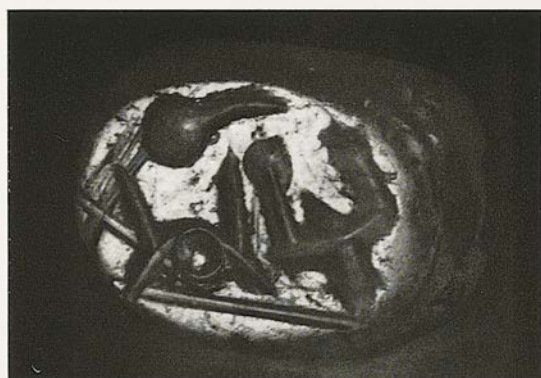
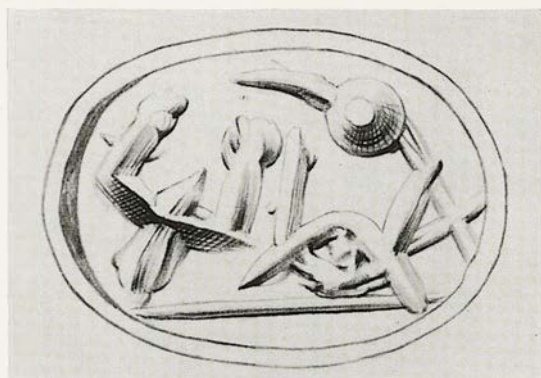
Evans, *JHS*. 14, 1894, 299 fig. 39 (b only). Evans, *CP*. 30. Furtwängler, *AG*. I pl. 6 figs. 13-14. *Burlington Fine Arts Club Exhib. Cat.* (1903) 182 no. 1 pl. 108 M 1. Evans, *SM*. 157 no. P. 41 pl. 2. *Sotheby's Sale Cat.*, 4 July 1921, no. 20 pl. 1. Walters, *Cat.* no. 3. Kenna, *Seals* 39 notes 1 and 2, 42 note 3, 73 note 9. Bought 1921.



MIDDLE MINOAN IIIA

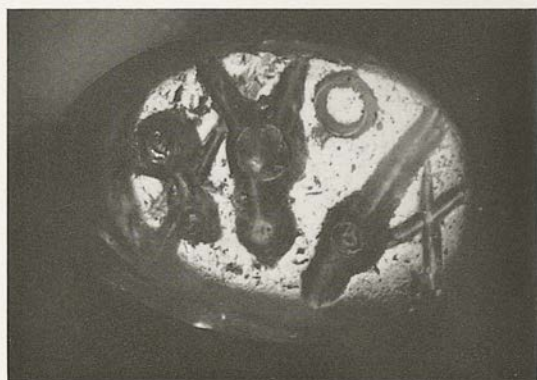
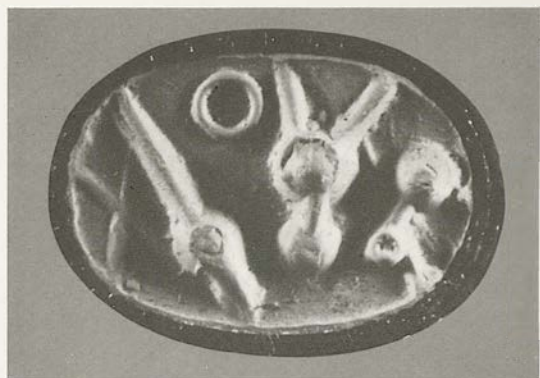
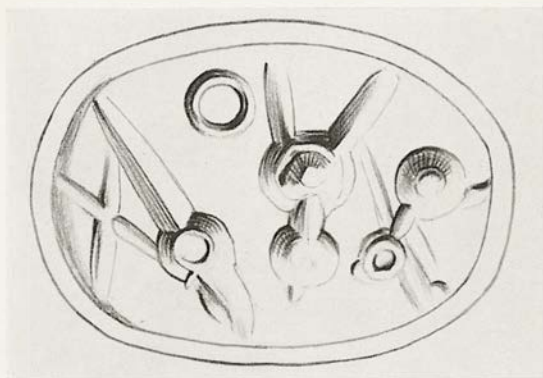
Nos. 36-44





36. B. M. (GR/R) 1900. 6-13. 2  
 Yellow agate  
 L. 1,5. W. 1,1; 1,1; 1,1. S.H. 0,2-0,3  
 Three-sided prism bead  
 From Kythera

The sides are engraved with hieroglyphic script.  
 Cf. *CHIK*.  
 Probably a local copy of fine Middle Minoan work.



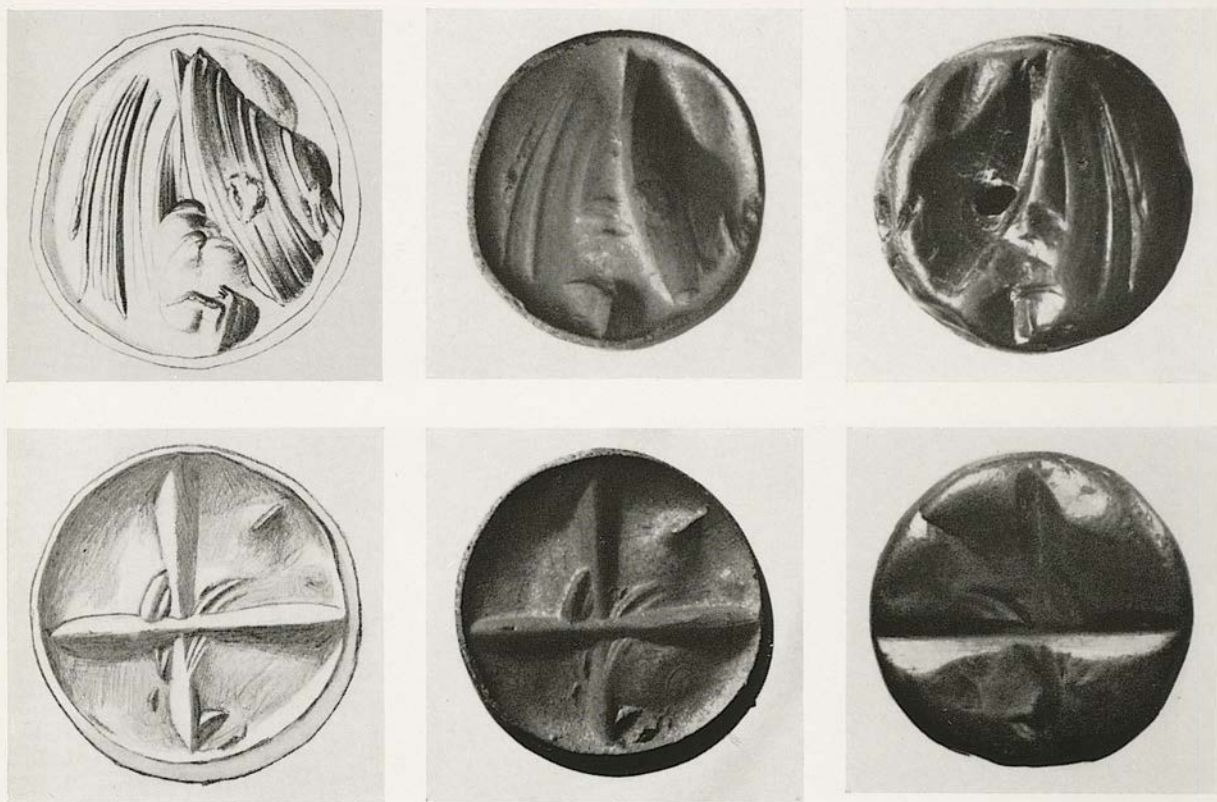
36. B. M. (GR/R) 1900. 6-13. 2  
 Yellow agate  
 L. 1,5. W. 1,1; 1,1; 1,1. S.H. 0,2-0,3  
 Three-sided prism bead  
 From Kythera



37. B.M. (GR/R) 1921. 12-12. 11  
 Obsidian  
 $\phi$  1,5. Th. 0,8. S.H. 0,15  
 Discoid

Appears to be a plant spray, but is due to the lines in the material, the motif being caused by cleavage of the obsidian. Reverse has four abraded patches which form a four petalled design. See *CMS.* VIII nos. 39 and 40.





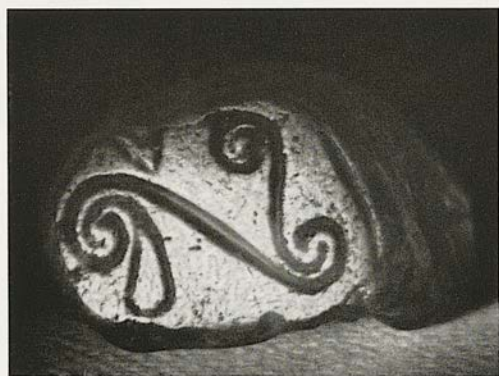
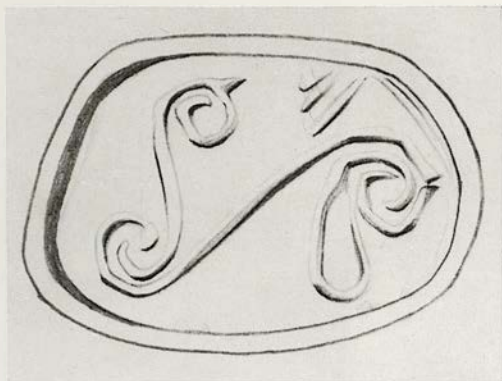
38. B. M. (GR/R) 1921. 12-12. 10

Obsidian

$\phi$  1,3. Th. 0,7. S. H. 0,2

Discoid

Motif appears to be two leaves, but is due to cavities caused by natural cleavage. Reverse has a rudimentary cross engraved on a slightly smoothed field.



39. B.M. (GR/R) 1892. 1-23. 1

Amethyst

L. 1,6. W. 0,9. H. 1,0. S.H. 0,15

Recumbent lion

From Mycenae

On the base are engraved two S-spirals springing from one coil; a leaf springs from another; three lines in the field.

Walters, *JHS.* 17, 1897, 69 fig. 7, pl. 3 fig. 8. Furtwängler, *AG.* III 32. Walters, *Cat.* no. 106. Evans, *PM.* IV 486 fig. 416.

Bought 1892.







40. B. M. (GR/R) 1934. 11-20. 1

Green jasper

1,1 × 0,5. S. H. 0,25

Rectangular bead

Each side bears hieroglyphic signs. Cf. *CHIK*.



41. B. M. (GR/R) 1901. 10-16. 3  
 Green jasper  
 $\phi$  1,4 x 1,1. S. H. 0,25  
 Elliptical bead with convoluted back

On the base are three hieroglyphic signs.  
 Cf. *CHIK*.

Walters, *Cat. no. 2. Encycl. Brit.*<sup>11</sup> XI pl. I fig. 6.

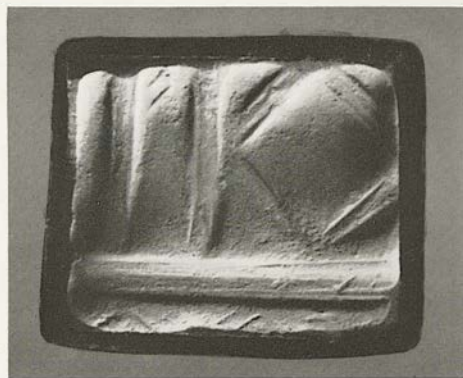
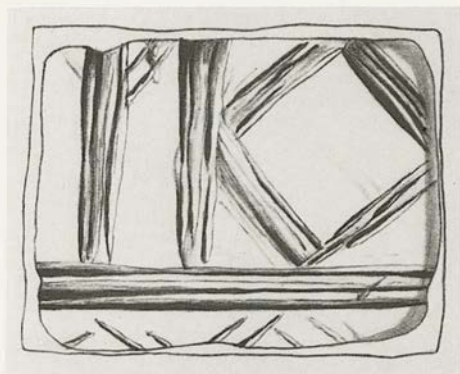


42. B.M. (GR/R) 1909. 4-9. 7  
 Agate  
 $\phi$  1,5. Th. 0,3-0,5. S.H. 0,2  
 Discoid

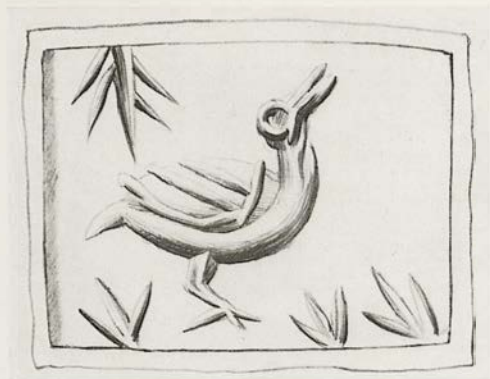
Cretan goat running to the left struck by a spear.  
 Eleven pointed star in the field.

Walters, *Cat.* no. 87. Evans, *PM.* IV 542 fig. 496.





43. B. M. (GR/R) 1930. 12-15. 2  
 Dark green steatite, possibly as a base for  
 gold overlay  
 $\phi$  1,5 x 1,3. Th. 0,4. S.H. 0,15  
 Flattened cylinder  
 An architectural or wall design.

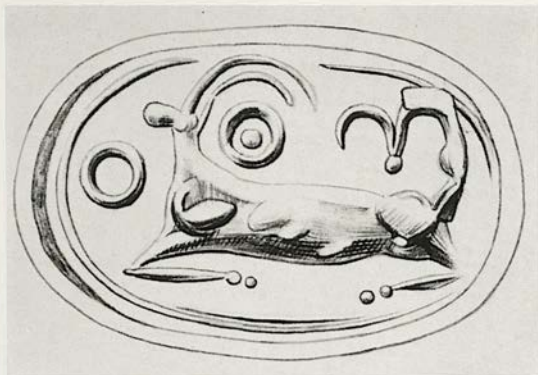


44. B. M. (GR/R) 1936. 7-21. 6  
 Banded grey agate  
 $\phi$  2,0 x 1,5. Th. 0,25-0,75. S. H. 0,2  
 Flattened cylinder  
 A water bird with plants.

MIDDLE MINOAN III B

Nos. 45-58





45. B.M. (GR/R) 1876. 5-13. 3  
 Dark green jasper  
 L. 2,0. W. 1,3; 1,3; 1,3. S.H. 0,3  
 Three-sided prism bead

- a) Cretan goat running to the left. Bucranium and two tubular drill sinkings in the field. Ground line.  
 b) Deer running to the right. Tubular drill sinking in the field and two border lines at each end of the field.



45. B. M. (GR/R) 1876. 5-13. 3  
 Dark green jasper  
 L. 2,0. W. 1,3; 1,3; 1,3. S. H. 0,3  
 Three-sided prism bead

c) Lion to the left. Large cup sinking in the field.  
 Sun. Ground line with crab. A border line en-  
 closes the field.

Evans, *JHS.* 17, 1897, 345. Walters, *Cat.* no. 5. Kenna,  
*Seals* 73 note 8.



46. B.M. (GR/R) 1947. 9-26. 21  
 Dark green jasper or Spartan Basalt  
 $\phi$  1,3. S.H. 0,15  
 Lentoid

A single handed ewer to the left with a branch in front and cross hatching round the handle.





47. B.M. (GR/R) 1883. 3-8. 2  
 Burnt agate or cornelian  
 $\phi$  2,1 x 1,6. S.H. 0,15  
 Glandular shaped seal

A single handed ewer to the right. Two branches in antithetic position are in the field.

Walters, *Cat.* no. 10. Cf. for the vase *Perrot-Chipiez* VI figs. 426, 16 and 431, 6. Evans, *SM.* 200. *AM.* 11, 1886, pl. 6 fig. 17. Schliemann, *Mycenae* fig. 353.  
 Bought 1883.



48. B. M. (GR/R) 1900. 5-21. 5  
 Mottled sard  
 $\phi$  1,4. S. H. 0,15  
 Lentoid  
 From Cyprus

Cantharos type of vase with lid. A branch in the field. Hatching under the handles.

Walters, *Cat.* no. 27.

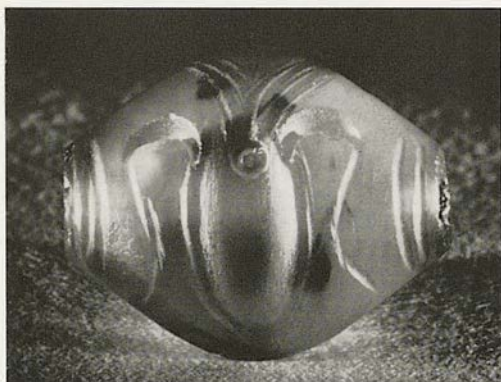
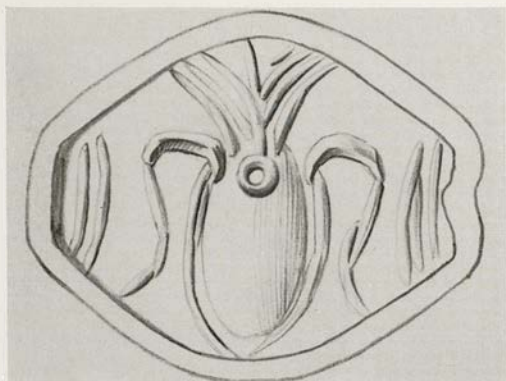


49. B. M. (GR/R) 1901. 10-16. 4  
 Mottled sard  
 $\phi$  1,7 x 1,4. S. H. 0,15  
 Glandular shaped seal  
 From Crete

Two-handled cantharos; the field is chiefly cross hatched.

Furtwängler, *AG*. I pl. 4 no. 7. Walters, *Cat.* no. 18.





50. B. M. (GR/R) 1907. 10-15. 5  
 Cornelian or mottled sard  
 $\phi$  1,4 x 1,1. S. H. 0,15  
 Glandular shaped seal  
 From Crete

A cuttle fish between two pairs of curved lines.

Walters, *Cat.* no. 17.



51. B.M. (GR/R) 1920. 11-17. 1

Cornelian

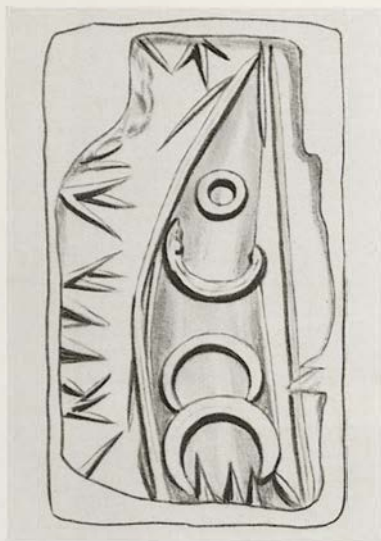
$\phi$  1,7 x 1,2. S. H. 0,12

Glandular shaped seal

From Sitia

Stylized cuttle fish with pendent branches on either side.

Walters, *Cat.* no. 19. Presented by H. Burgon Esq. 1920.



52. B. M. (GR/R) 1930. 12-15. 1

Cornelian

$\phi$  1,5x0,9. Th. 0,55. S. H. 0,2

Part of a flattened cylinder

One half of the stone is lost by fracture

The forepart of a tunny fish; representation of seaweed along the edge of the stone.





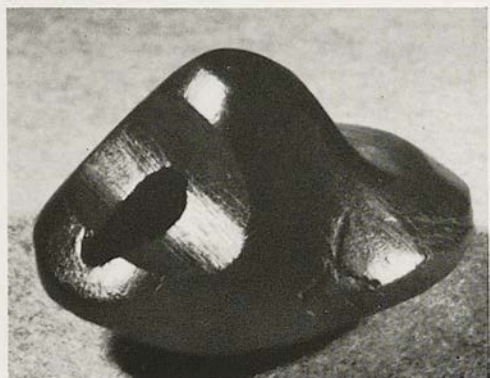
53. B. M. (GR/R) 1947. 9-26. 17

Green jasper

$\phi$  1,3. S. H. 0,2

Lentoid

A cluster of growing vegetable fronds.



54. B. M. (GR/R) 1947. 9-26. 15  
 Cornelian  
 $\phi$  1,1. H. 0,7. S. H. 0,12  
 Button shaped seal

A double axe between hatched lunettes. A triangle is engraved over the top of the shaft.



55. B. M. (GR/R) 1947. 9-26. 18  
 Red jasper  
 $\phi$  1,1. S. H. 0,15  
 Lentoid

The circular field is diagonally divided in four segments of  $90^\circ$  filled with plain hatching. Two also bear a single lunette. A tubular drill sinking marks the centre. This motif appears to be related to both the double axe and the panel motif.





56. B. M. (GR/R) 1947. 9-26. 16

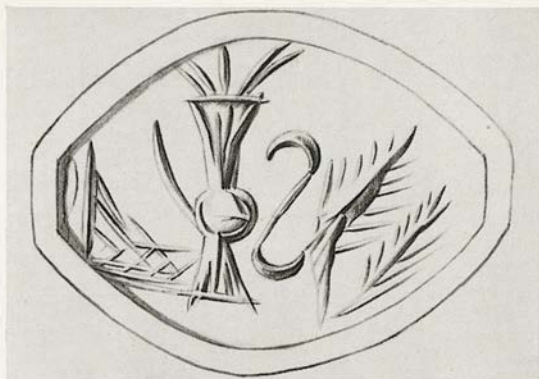
Cornelian

$\phi$  1,0. S. H. 0,1-0,15

Lentoid

The stringhole is drilled through the stone  
from one side

Three vegetable fronds springing from a base in  
the form of a bundle. Two outside fronds are  
feathered in the likeness of wings. Sporadic  
hatching in the field.



57. B.M. (GR/R) 1901. 10-16. 6  
 Mottled jasper  
 $\phi$  2,2 x 1,6. Th. 0,8. S. H. 0,2  
 Glandular shaped seal  
 From Crete

A spouted ewer (*prochous*) with three vegetable sprays. One is erect; of the other two, one is bent away from the ewer, the other lies on its side.

Walters, *Cat.* no. 11.



58. B.M. (GR/R) 1901. 10-16. 7

Cornelian

Ø 1,4. S. H. 0,17

Lentoid

The stone is fractured on the back surface  
From Crete

A variant of no. 56. Three vegetable sprays spring from a base so that a vegetable motif appears to combine with the sacral horns. Free hatching in the field.

Walters, *Cat.* no. 26.



SECOND TRANSITIONAL PHASE

Nos. 59-68



59. B.M. (GR/R) 1947. 9-26. 14

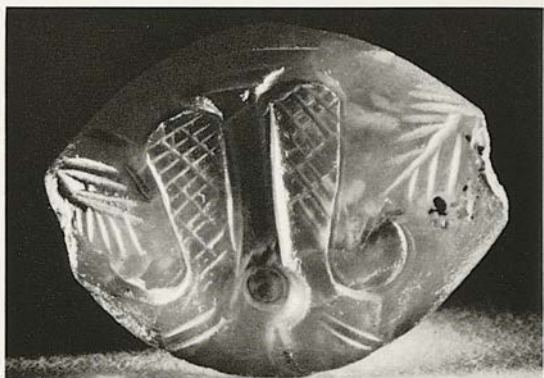
Rock crystal

$\phi$  1,1. S. H. 0,15

Lentoid

The stringhole, not quite central, has been drilled throughout in one operation

Three vegetable fronds springing from a base.



60. B. M. (GR/R) 1922. 9-5. 1  
 Cornelian  
 $\phi$  2,4 x 1,8. S. H. 0,2  
 Amygdaloid  
 From Melos

Two handled cantharus. Sporadic cross hatching  
 under handles. Two branches radially suspended.

Walters, *Cat.* no. 20.





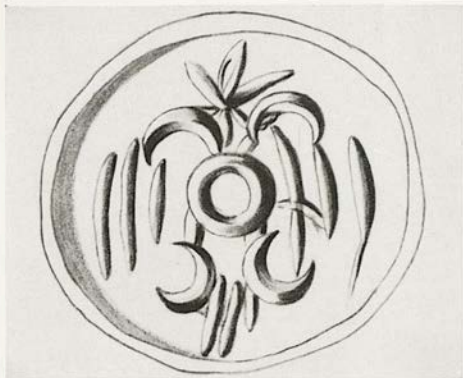
61. B.M. (GR/R) 1947. 9-26. 25

Green jasper

$\phi$  1,9 x 1,4. S.H. 0,2

Amygdaloid

A cuttle fish. A curved line is engraved at each end of the stone, perhaps to represent the gold terminals of the stringhole sometimes found on finer gems.



62. B.M. (GR/R) 1947. 9-26. 19

Cornelian

$\phi$  1,1. S.H. 0,1

Lentoid

One central tubular drill mark; four lunettes quadrilaterally disposed; three groups of vertical hatching; an arrow form in the exergue.



63. B.M. (GR/R) 1901. 10-16. 9

Serpentine

Ø 1,5. S. H. 0,15

Lentoid

From Crete

Talismanic combination of the vegetable fronds, the sacral horns and the lion's mask. Cross hatching in the exergue.

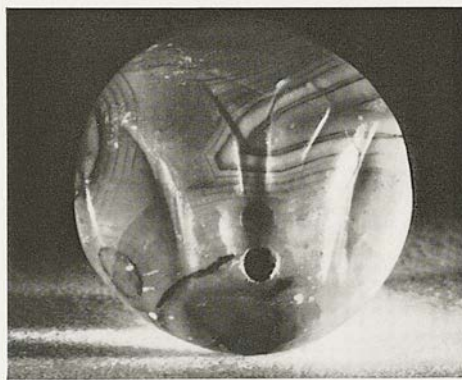
Walters, *Cat.* no. 25.





64. B. M. (GR/R) 1934. 1-19. 2  
Cornelian  
 $\phi$  1,5. S. H. 0,15  
Lentoid

Collared hound to the left.



65. B. M. (GR/R) 1901. 10-16. 1  
Brown and pink banded agate  
 $\phi$  1,5. S. H. 0,2  
Lentoid  
From Crete

a) Bull struck with a lance.  
b) Ewer between the sacral horns.  
Walters, *Cat.* no. 22. Evans, *PM.* IV fig. 375.

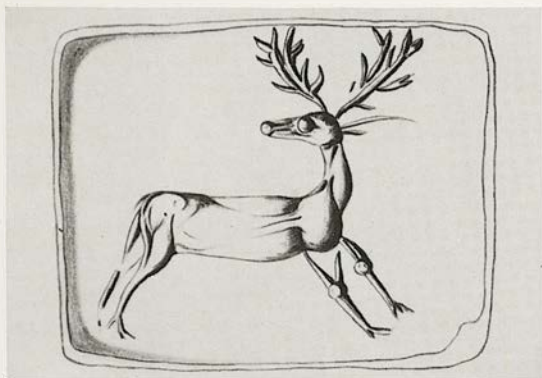


66. B. M. (GR/R) 1875. 8-20. 5  
 Cornelian  
 $\Phi$  1,5. S. H. 0,2  
 Lentoid

Tethered bitch giving suck stalked by another animal in the background.

*Perrot-Chipiez* VI 851 fig. 432 no. 1. *Furtwängler, AG.*  
 I pl. 3 fig. 12. *Walters, Cat.* no. 49.  
 Bought 1875.





67. B. M. (GR/R) 1874. 3-5. 29

Green jasper

$\phi$  1,7 x 1,3. S. H. 0,2

Flattened cylinder

Stag checked in flight, regardant.

*Perrot-Chipiez* VI 851 fig. 432 no. 11. *Walters, Cat.*  
no. 226.



68. B. M. (GR/R) TB 127; R 14  
 Gold  
 $\phi$  of bezel 1,6. Greatest  $\phi$  of hooped handle  
 1,45.  $\phi$  of hooped handle at bezel 1,3. W. of  
 hooped handle 0,5  
 Signet with hooped handle

The coition of two goats.

Evans, *PM*. IV Suppl. Pl. 54i. Kenna, *Seals* 75 and  
 note 4.

From the Burgon Collection.

LATE MINOAN IA

Nos. 69-80

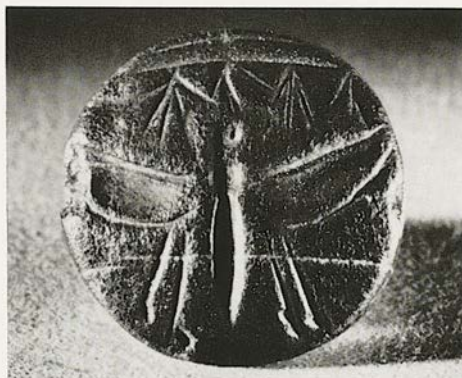




69. B. M. (GR/R) 1901. 10-16. 8  
 Haematite  
 $\phi$  1,1 x 1,2. S. H. 0,15  
 Lentoid  
 From Crete

A bird with wings fully displayed. Perhaps talismanic in character.

Walters, *Cat.* no. 42.



70. B. M. (GR/R) 1928. 10-17. 1  
 Black jasper  
 $\phi$  1,2-1,3. S. H. 0,1  
 Lentoid

A bee in flight. From the exergue springs grass.



71. B.M. (GR/R) 1884. 6-8. 123

Green slate

$\phi$  2,0. S.H. 0,15

Lentoid

From Crete

A butterfly with wings fully displayed.

Walters, *Cat.* no. 29.

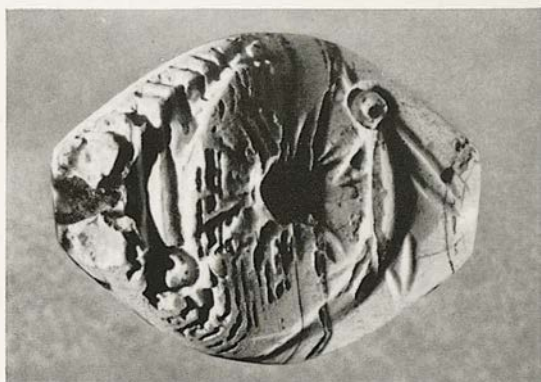
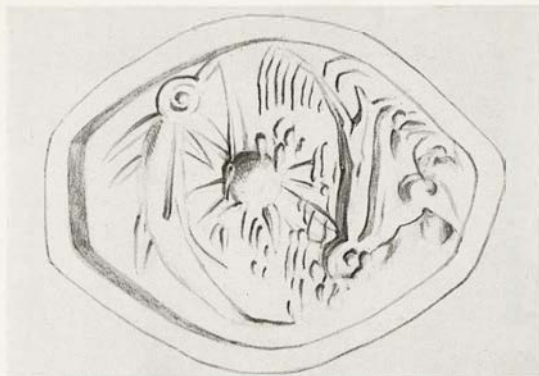




72. B. M. (GR/R) 1884. 6-28. 8  
 Agate  
 $\phi$  1,8 x 1,6. Th. 1,0. S. H. 0,15  
 Glandular shaped seal  
 From Crete

A ship to the left, engraved in the talismanic idiom.

Walters, *Cat. no. 12. Marinatos, BCH. 57, 1933, 178 no. 50.*



73. B. M. (GR/R) 1875. 4-6. 3

Sard

$\phi$  1,6  $\times$  1,3. Th. 0,8. S. H. 0,15

Glandular shaped seal

Sea urchin or sun between two dolphins.

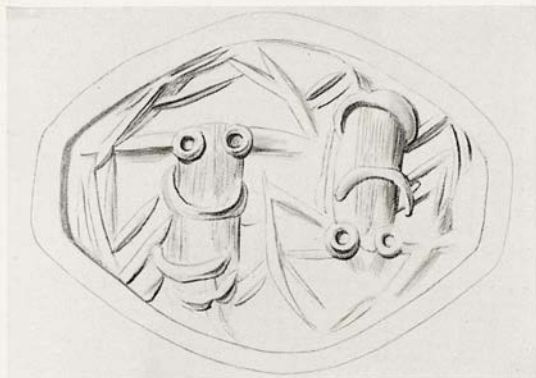
Walters, *Cat.* no. 14.



74. B. M. (GR/R) 1934. 11-20. 8  
 Grey and brown agate  
 $\phi$  2,8x1,8. Th. 1,0. S. H. 0,1  
 Glandular shaped seal

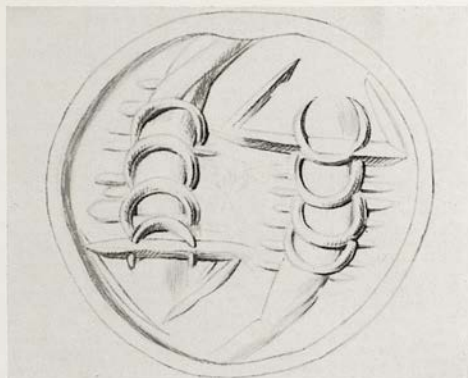
Foreparts of two tunny fish antithetically disposed; a smaller fish between. Groups of curved lines engraved at each end of the stone.





75. B.M. (GR/R) 1934. 11-20. 9  
 Cornelian  
 $\phi$  2,0 x 1,5. Th. 0,8. S. H. 0,2  
 Glandular shaped seal

Two scorpions or crustaceans antithetically disposed.



76. B. M. (GR/R) 1884. 2-28. 2  
 Cornelian  
 $\phi$  1,6. S. H. 0,15  
 Lentoid  
 From Crete

Two scorpions or crustaceans antithetically disposed. The background is barred.

Walters, *Cat.* no. 28.

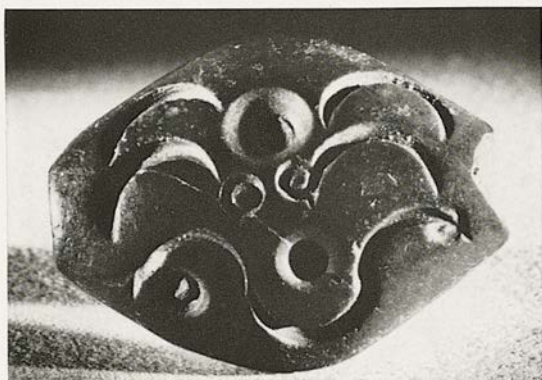


77. B. M. (GR/R) 1921. 12-12. 14  
 Burnt cornelian  
 $\phi$  1,6 x 1,4. S. H. 0,15-0,2  
 Glandular shaped seal

Two tunny fish swimming; the zigzag lines perhaps representing waves.

Walters, *Cat.* no. 156.

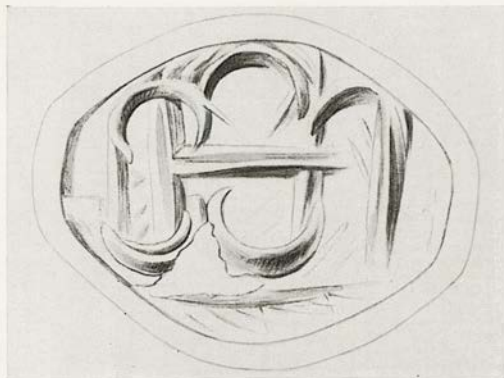




78. B. M. (GR/R) 1889. 5-21. 3  
 Green jasper  
 $\phi$  1,8 x 1,3. S.H. 0,2  
 Amygdaloid

Cuttle fish.

Walters, *Cat.* no. 15.



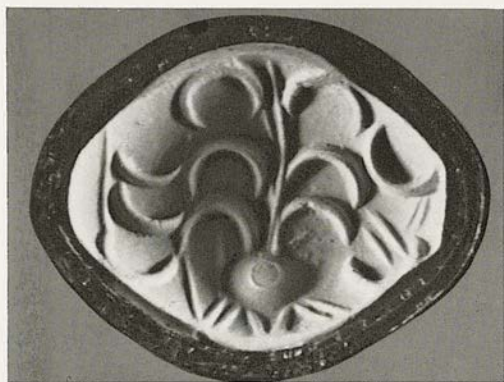
79. B. M. (GR/R) 1947. 9-26. 29

Pale green jasper

$\Phi$  1,6 x 1,2. S. H. 0,2

Amygdaloid

A group of lunettes, vertical and horizontal bars with some diagonal hatching. Perhaps a talismanic combination of the panel and octopus motifs.



80. B.M. (GR/R) 1947. 9-26. 24

Green jasper

$\phi$  1,8 x 1,4. S.H. 0,2

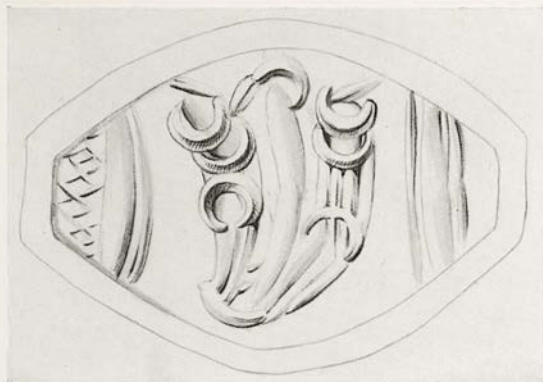
Amygdaloid

A stylized cuttle fish.



LATE MINOAN IB

Nos. 81-96



81. B. M. (GR/R) 1876. 5-13. 4  
 Green jasper  
 $\phi$  1,6 x 1,4. Th. 0,8. S. H. 0,2  
 Glandular shaped seal  
 From Crete

Two vegetable fronds with bands. Curved lines  
 and cross hatching at each end of the stone.

Walters, *Cat.* no. 8.



82. B.M. (GR/R) 1854. 5-19. 150

Haematite

$\phi$  1,5. S.H. 0,15

Lentoid

Two vegetable fronds antithetically disposed.

Furtwängler, *AG*. I pl. 4 fig. 8; II 18. Walters, *Cat.*  
no. 23.





83. B.M. (GR/R) 1883. 3-8. 3

Burnt sard

$\phi$  1,7 x 1,5. S.H. 0,2

Glandular shaped seal

Two vegetable fronds or plants with cross hatching in the field.

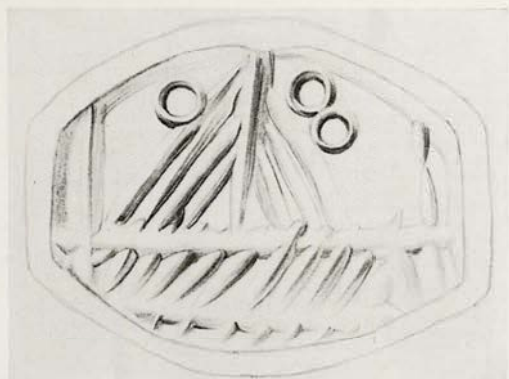
Furtwängler, *AG.* I pl. 4 fig. 9; II 18. Walters, *Cat.* no. 7.



84. B. M. (GR/R) 1874. 5-5. 55  
 Burnt cornelian or sard  
 $\phi$  1,4. S. H. 0,13  
 Lentoid

Two plant-like forms or vegetable fronds springing from one lunette. They are also joined by lunettes and are of the shape of the foreparts of fish.

Walters, *Cat.* no. 24.



85. B.M. (GR/R) 1947. 9-26. 28  
 Grey agate  
 $\phi$  1,5 x 1,1. S. H. 0,25  
 Truncated amygdaloid

A twenty oared ship. The mast has six stays.  
 Overhead are three engraved circles.

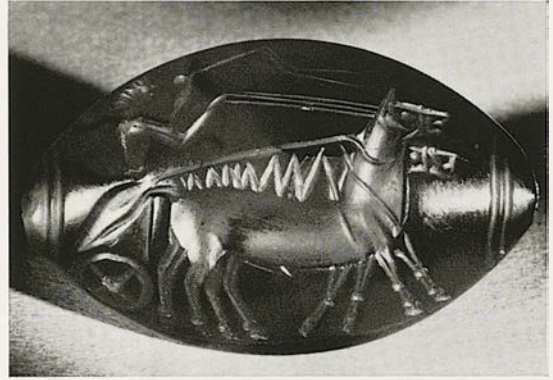




86. B.M. (GR/R) 1903. 10-13. 7  
Cornelian  
 $\phi$  1,6 x 1,2. S.H. 0,15  
Glandular shaped seal  
From Crete

A winged insect, probably a bee.

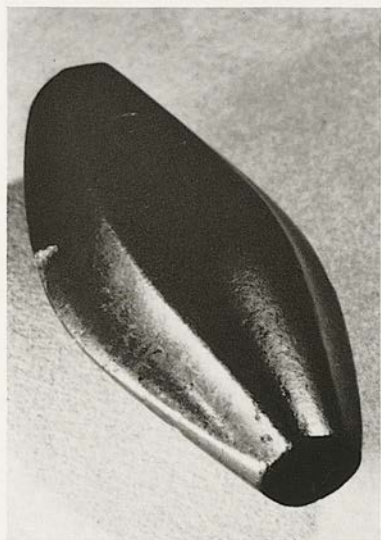
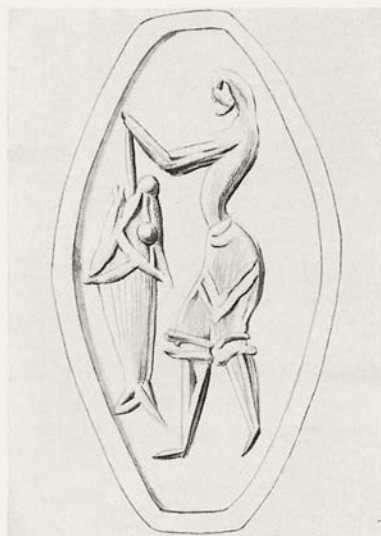
Walters, *Cat.* no. 21.



87. B. M. (GR/R) 1880. 4-28. 1  
 Cornelian  
 $\phi$  3,3 x 2,1. S. H. 0,3  
 Glandular shaped seal  
 From Knossos

Charioteer driving chariot with a pair of mules to the left.

Imhoof-Blumer u. Keller, *Tierbilder* pl. 17 fig. 2. Murray, *Handbook* 42 fig. 30. Perrot-Chipiez VI 845 fig. 428 no. 2. Furtwängler, *AG*. I pl. 2 fig. 9; III 48. Reichel, *Waffen*<sup>2</sup> 139 fig. 87. Mercklin, *Rennwagen* 11. For the arrangement of the chariotpole compare the gem from Vaphio, *CMS*. I Nr. 229. Walters, *Art* pl. 88,29. Walters, *Cat.* no. 39. Kenna, *Seals* 54.



88. B. M. (GR/R) 1923. 4-1. 1  
 Black jasper  
 $\phi$  2,8x1,5. S. H. 0,2  
 Amygdaloid with faceted back  
 Man holding tunny fish.

Helbig, *Mémoires de l'Acad... des Inscr.* 25. 310 fig. 14. Imhoof-Blumer u. Keller, *Tierbilder* pl. 23 fig. 14. Murray, *Handbook* 42 fig. 29. Perrot-Chipiez VI 851 fig. 432 no. 4. Furtwängler, *AG.* I pl. 2 fig. 44. Evans, *SM.* 205. Walters, *Art* pl. 88, 11. Walters, *Cat.* no. 40. W. Radcliffe, *Fishing from the earliest times* (1921) 63 note 2.





89. B. M. (GR/R) 1884. 5-20. 17

Cornelian

$\phi$  1,9x1,7. S.H. 0,15

Glandular shaped seal

From Crete

Four Cretan goats to the right; two stand erect, one snuffs the earth, the furthest turns its head away.

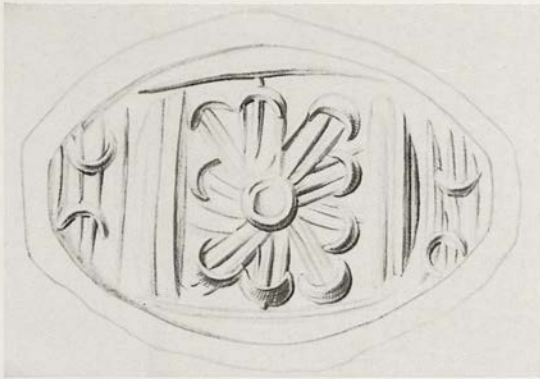
Imhoof-Blumer u. Keller, *Tierbilder* pl. 18 fig. 31.  
Furtwängler, *AG. I* pl. 6 fig. 7. Walters, *Cat.* no. 34.  
Evans, *PM.* IV fig. 431.



90. B.M. (GR/R) 1923. 4-1. 2  
 Red jasper  
 $\phi$  1,5-1,6. S.H. 0,15-0,2  
 Lentoid

Two maned lions regardant run to the left so that a circular design is made.

Imhoof-Blumer u. Keller, *Tierbilder* pl. 14 fig. 29.  
 Walters, *Cat.* no. 47.

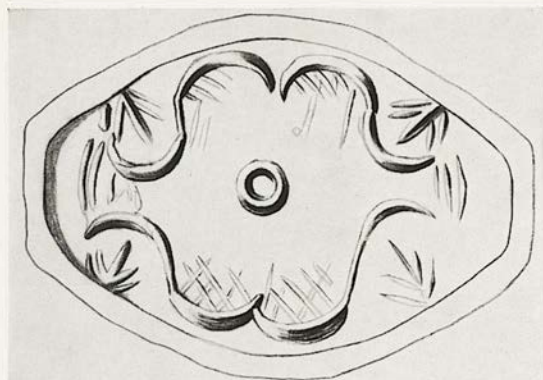


91. B. M. (GR/R) 1901. 10-16. 2  
 Cornelian  
 L. 1,9. W. 1,3; 1,0; 1,0. S. H. 0,15  
 Three-sided prism bead

The back is scored with two parallel lines and is ribbed. A rosette in a square framed panel, flanked by bundles.

Walters, *Cat.* no. 9.

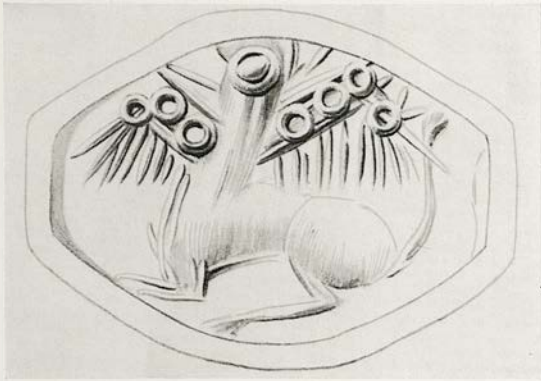




92. B. M. (GR/R) 1901. 10-10. 10  
 Basalt  
 $\phi$  2,0 x 1,4. Th. 0,47. S. H. 0,2  
 Amygdaloid

Pattern of lunettes with cross hatching surrounding a central circle. Vegetable sprays one side of the field. Perhaps a talismanic combination of the cuttle fish and panel motifs.

Walters, *Cat.* no. 16.



93. B. M. (GR/R) 1947. 9-26. 32  
Cornelian  
 $\phi$  1,5 x 1,1. S.H. 0,18-0,2  
Glandular shaped seal  
From Crete

A griffin to the left.



94. B. M. (GR/R) 1880. 4-29. 2  
 Cornelian  
 L. 2,2.  $\phi$  0,8. S. H. 0,2-0,3  
 Cylinder seal

Scenes of pursuit inverted to each other.

- a) A quadruped pursued by a griffin.  
 b) A Cretan goat pursued by a lion; a dolphin  
 leaps between them. In the field are feathered  
 objects or darts.

Walters, *Cat.* no. 149.

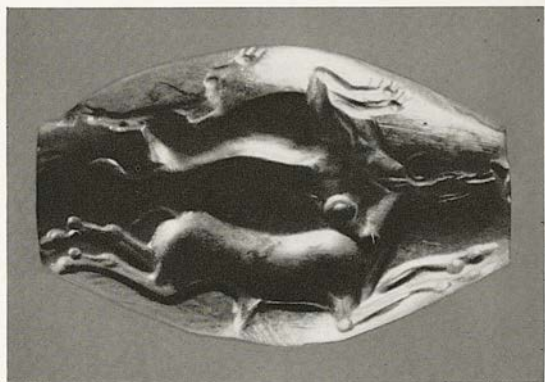
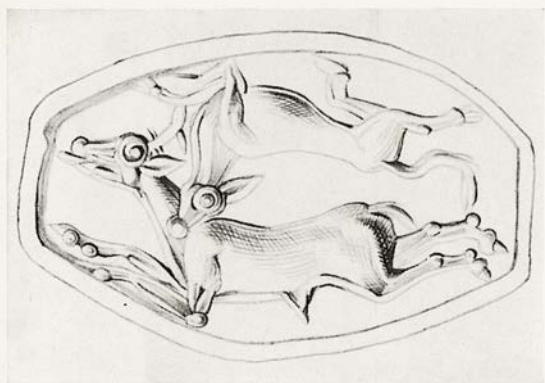




95. B. M. (GR/R) 1892. 11-30. 3  
 Cornelian  
 $\phi$  2,1 x 1,5. S. H. 0,2  
 Truncated glandular shaped seal with fac-  
 etted back.  
 From Hydra

Ass headed monster with two attendants.

Cook, *JHS.* 14, 1894, 84 ff. Walters, *JHS.* 17, 1897, 68  
 pl. 3 fig. 5. Furtwängler, *AG.* I pl. 6 fig. 16; III 38  
 ('fettering him with incantations'). Walters, *Art* pl.  
 88, 15. Walters, *Cat.* no. 41. Lippold, *Gemmen* pl. 80, 1.



96. B.M. (GR/R) 1921. 7-11. 3

Red jasper

$\phi$  2,1 x 1,4. S.H. 0,2

Truncated amygdaloid

Hound attacking deer to the left.

*Burlington Fine Arts Club Cat.* (1903) 182 no. 3, pl.

108 M 3. *Sotheby's Sale Cat.* July 1921 no. 22 pl. 1.

Walters, *Cat.* no. 32.

Bought 1921.

LATE MINOAN II

Nos. 97-132

A new scrutiny of the Cretan seals in the British Museum suggests that nos. 110, 111, 112, 119 might be better placed within the LM III A<sub>1</sub> period.





97. B. M. (GR/R) 1874. 3-5. 28

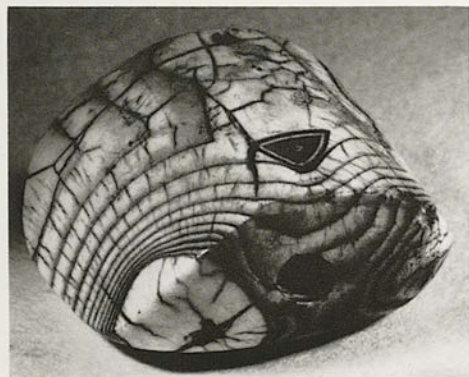
Chalcedony

$\Phi$  1,7 x 1,5. S. H. 0,1-0,2

Flattened cylinder

Bull to the left, regardant. A tubular drill mark is engraved on the hind quarters.

Imhoof-Blumer u. Keller, *Tierbilder* pl. 18 fig. 54.  
Walters, *Cat.* no. 104.



98. B. M. (GR/R) 1875. 8-20. 1  
 Banded agate  
 L. 1,5-1,6. W. 1,0. Th. 0,7. S. H. 0,15-0,2  
 Hemi-cylinder

Two agrimi to the right; one to the rear, regardant. Two branches in the field.

Furtwängler-Loeschke, *MV.* pl. E 14. Imhoof-Blumer u. Keller, *Tierbilder* pl. 17 no. 40. Furtwängler, *AG.* I pl. 3 fig. 15. Walters, *Cat.* no. 90.  
 Bought 1875.



99. B. M. (GR/R) 1905. 6-6. 1  
 Brown cornelian  
 $\phi$  1,7. S. H. 0,15  
 Lentoid  
 Part broken away underneath

Bull to the right licking hinder hoof. A double ground line.

Furtwängler, *AG*. I pl. 3 fig. 42. *Pierres gravées antiques, Collection d'un Archéologue Explorateur*, (A. J. Evans) Vente, Hotel Drouot, 8 May 1905, pl. 1 no. 10. Walters, *Art* pl. 88, 4. Walters, *Cat.* no. 70. Bought 1905.





100. B. M. (GR/R) 1875. 10-22. 3  
 Haematite  
 $\phi$  2,2 x 1,7. S. H. 0,2  
 Truncated glandular shaped seal  
 From Crete

An ox stands to the right; beyond it, another with head raised as in the act of bellowing. They are accompanied by a man wearing a Minoan loin cloth. In the field a sacral shield, an impaled triangle and the diagonal cross.

Reinach, *RA.* 36, 1878 pl. 20 fig. 4. Milchhöfer, *Anfänge* 82 fig. 54 c. Furtwängler-Loeschke, *MV.* pl. E 22. Imhoof-Blumer u. Keller, *Tierbilder* pl. 17 fig. 45 ('female antelopes'). Babelon, *Gravure* 86 fig. 57. Cook, *JHS.* 14, 1894, 126, 131. Furtwängler, *AG.* I pl. 2 fig. 23. Walters, *Art* pl. 88, 30. Walters, *Cat.* no. 38. Kenna, *Seals* 59 no. 45.  
 Bought 1873.



101. B. M. (GR/R) 1947. 9-26. 27  
 Cornelian  
 $\phi$  1,7 x 1,2. S. H. 0,15  
 Truncated amygdaloid

A ship in a storm to the left. Waves and furled sails are shown by lunettes.



102. B. M. (GR/R) 1892. 7-20. 2  
 Mottled agate  
 $\phi$  2,2-2,3. S. H. 0,2  
 Lentoid  
 From Crete

Man with a prize ox to the left.

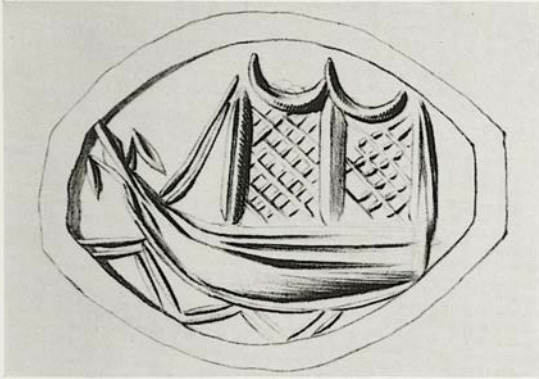
Walters, *JHS.* 17, 1897, 67 pl. 3 fig. 2. Furtwängler, *AG.* I pl. 6 fig. 10; III 49. Walters, *Art* pl. 88,14. Walters, *Cat.* no. 79. Evans, *PM.* IV 504 fig. 536. Lip-pold, *Gemmen* pl. 90, 3. Kenna, *Seals* 59 no. 45. *En-cycl. Brit.*<sup>11</sup> XI pl. 1 fig. 7.





103. B.M. (GR/R) 1934. 1-19. 1  
 Cornelian  
 $\phi$  1,6 x 1,5. S. H. 0,2  
 Lentoid

Two calves running to the right, the rear calf regardant; a curved ground line.



104. B. M. (GR/R) 1884. 6-28. 9  
 Cornelian  
 $\phi$  1,8 x 1,4. S. H. 0,15  
 Glandular shaped seal  
 From Crete

Ship on the waves; prow terminates in the fleur-de-lys.

Furtwängler-Loeschke, *MV.* pl. E 20. Furtwängler, *AG.* I pl. 4 fig. 2. Walters, *Cat.* no. 13. Marinatos, *Ephem.* 1930, 124 fig. 11. Marinatos, *BCH.* 57, 1933, 177 no. 44.

Presented by W. R. Paton, Esq. 1884.

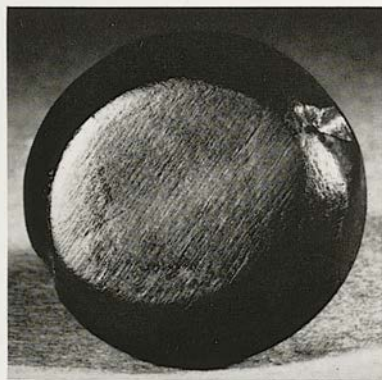


105. B. M. (GR/R) 1900. 6-13. 1  
 Cornelian  
 $\phi$  1,7-1,9. S. H. 0,15  
 Lentoid  
 From Mycenae

Young wounded bull, trying vainly to dislodge the dart with nearside hoof.

Walters, *Art* pl. 88, 22. Walters, *Cat.* no. 66. Evans, *PM.* IV 543, 544 fig. 499, p. 544 note 2. Kenna, *Seals* 54 note 5, 75 section 1.





106. B.M. (GR/R) 1874. 3-5. 9  
 Cornelian  
 $\phi$  1,6. S.H. 0,15  
 Lentoid

Bull running to the right, wounded with a broken  
 dart.

Walters, *Cat.* no. 67. Kenna, *Seals* 37 note 3, 76 no. 2  
 fig. 160.



107. B. M. (GR/R) 1922. 9-5. 2

Sard

$\phi$  1,7 x 1,5. S. H. 0,2-0,3

Glandular shaped seal with faceted back

From Melos

Five Cretan goats radially disposed, with heads to the centre.

Walters, *Cat.* no. 35.



108. B. M. (GR/R) 1877. 7-28. 2

Haematite

ϕ 1,7. S.H. 0,15

From Crete

Taurokathapsia in the style and technique of one school of Late Minoan II engravers.

*RA.* 36, 1878 pl. 20 fig. 7. Furtwängler-Loeschke, *MV.* pl. E 23. Murray, *Handbook* 43 fig. 32. Cook, *JHS.* 14, 1894, 127. Furtwängler, *AG.* I pl. 2 fig. 37. Reichel, *AM.* 34, 1909, 85. Walters, *Cat.* no. 77.  
Bought 1877.





109. B. M. (GR/R) 1890. 5-12. 2  
 Haematite with pronounced flecks  
 $\phi$  2,2. S. H. 0,2  
 Lentoid

Practice for the taurokathapsia; one man leaps over the bull's back, another stands in front of the bull holding one horn.

*Classical Review* 1890, 282. Reinach, *RA.* 16, 1890, 240. Murray, *Handbook* 45 fig. 38. Perrot-Chipiez VI 851 fig. 432 no. 12. Cook, *JHS.* 14, 1894, 127. Walters, *JHS.* 17, 1897, 70 pl. 3 fig. 12. Furtwängler, *AG.* I pl. 6 fig. 8. Reichel, *AM* 34, 1909, 90 fig. 9 and 92. Walters, *Cat.* no. 78. Kenna, *Seals* 76 fig. 162. *Encycl. Brit.*<sup>11</sup> XI pl. 1, 14.



110. B. M. (GR/R) 1900. 2-12. 1  
 Black marble  
 $\phi$  1,9-2,1. S.H. 0,25  
 Lentoid  
 From Trypiti, Melos

Bull running to the right, head thrown back.

Walters, *Cat.* no. 69. Walters, *Art* pl. 88, 23.  
 Presented by C. C. Edgar, Esq., 1900.



111. B. M. (GR/R) 1874. 3-5. 14  
 Banded agate  
 $\phi$  1,9-2,0. S. H. 0,15-0,17  
 Lentoid

Two gazelles running to the left, antithetically disposed. A bucranium, a fishlike monster and a flower in the field.

Imhoof-Blumer u. Keller, *Tierbilder* pl. 19 fig. 2.  
 Walters, *Cat.* no. 53.





112. B.M. (GR/R) 1874. 3-5. 42  
 Banded agate of high degree of translucency  
 $\phi$  2,2. S.H. 0,15  
 Lentoid

Three young bulls at rest. They are disposed in a circular fashion; heads to the centre.

Walters, *Cat.* no. 72.



113. B. M. (GR/R) 1870. 10-8. 38

Rock crystal

Ø 2,2-2,3. S. H. 0,2

Lentoid

From Ialysos

Bull to the right, regardant. It has certain characteristics associated with the antelope. Before a giant palm; below a sacral shield.

Furtwängler-Loeschcke, *MV.* pl. E 5. Imhoof-Blumer u. Keller, *Tierbilder* pl. 17 fig. 43 (antelope bubalis). *RA.* 36, 1878, pl. 20 fig. 8. Murray, *Handbook* 46 fig. 39. Perrot-Chipiez VI pl. 16 fig. 1. Cook, *JHS.* 14, 1894, 126. Furtwängler, *AG.* I pl. 3 fig. 51. Reichel, *Waffen* 3 fig. 7. Walters, *Art* pl. 88, 12. Walters, *Cat.* no. 71. Kenna, *Seals* 76 section 1., 79 note 7. *Encycl. Brit.*<sup>11</sup> XI pl. 1 fig. 15.

Presented by Prof. Ruskin, 1872.



114. B.M. (GR/R) R. P. K. 60

Agate

$\phi$  2,0. S. H. 0,2

Lentoid

Lion incurved to sniff near hind paw; formal patterned mane.

Imhoof-Blumer u. Keller, *Tierbilder* pl. 14 fig. 5. Perrot-Chipiez VI 851 fig. 432 no. 9. Furtwängler, *AG. I* pl. 3 fig. 37. Walters, *Art* pl. 88, 17. Walters, *Cat.* no. 44. For a design similarly composed, but of different execution, on a stone from Mycenae, cf. *Ephem.* 1888 pl. 10 fig. 39. Kenna, *Seals* 55, 56, 59 no. 32, 79 note 6. *CMS.* I no. 84.





115. B.M. (GR/R) R.P.K. 59  
 Red jasper  
 L. 1,2. W. 1,3; 1,3; 1,3. S.H. 0,12  
 Three-sided prism bead

- a) Lion gripping cow by neck. Ground line above.
- b) Two calves running.
- c) Contorted lion. Ground line below.

Mueller-Wieseler, *Denkmäler der alten Kunst* I pl. 15 nos. 56, 57 (a und b). Perrot-Chipiez VI fig. 428 nos. 3-5. Walters, *Cat.* no. 89. Kenna, *Seals* 55 note 1, 60 no. 16. *Encycl. Brit.*<sup>11</sup> XI pl. 1 figs. 11-13.  
 Obtained by Sir W. Gell in the Peloponnese.





116. B. M. (GR/R) T 299. 37  
 Black marble  
 $\phi$  1,9. S. H. 0,15  
 Lentoid

Bull attacked by a lion and a griffin.

Furtwängler-Loeschcke, *MV.* pl. E 12. Furtwängler,  
*AG.* I pl. 3 fig. 5. Walters, *Cat.* no. 65.





117. B.M. (GR/R) 1874. 3-5. 7  
Haematite  
 $\phi$  1,6-1,7. S.H. 0,15  
Lentoid

Two lions attack a deer running to the right.

Walters, *Cat.* no. 182.



118. B. M. (GR/R) 1897 Franks Bequest  
 Yellow sard  
 $\phi$  2,0. S. H. 0,15  
 Lentoid  
 Set in an antique gold hoop (on a modern  
 bronze pin)

Goddess seated to the right on a lion's head throne. Two lions in attendance.

Evans, *JHS.* 21, 1901, 165 fig. 45 no. 2. Marshall, *Catalogue of the finger rings* (1907) 50 no. 282 pl. 7. Walters, *Cat.* no. 83. Evans, *PM.* IV 402 fig. 333. Kenna, *Seals* 59 no. 2. Franks Bequest 1897.



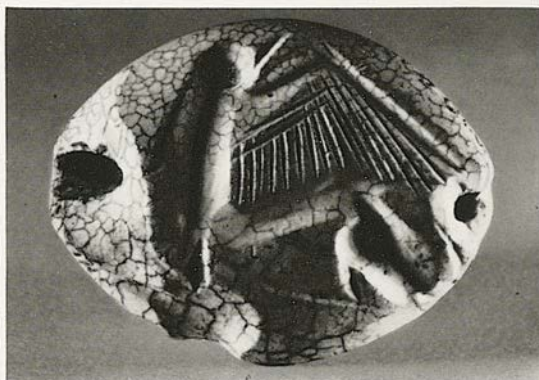
119. B. M. (GR/R) 1874. 3-5. 10  
 Red-brown agate or cornelian  
 $\phi$  1,6-1,7. S.H. 0,15  
 Lentoid

Two Cretan goats in the position of worship.

Furtwängler-Loeschcke, *MV.* pl. E 13. Imhoof-Blumer  
 u. Keller, *Tierbilder* pl. 18 fig. 25. Murray, *Handbook*  
 41 fig. 27. Furtwängler, *AG.* I pl. 3 fig. 21. Walters,  
*Art* pl. 88, 6. Walters, *Cat.* no. 60. Kenna, *Seals* 60  
 no. 8.

Bought 1874.





120. B. M. (GR/R) 1930. 4-16. 5  
 Burnt cornelian  
 $\phi$  2,2 x 1,7. S. H. 0,15-0,2  
 Amygdaloid with faceted back

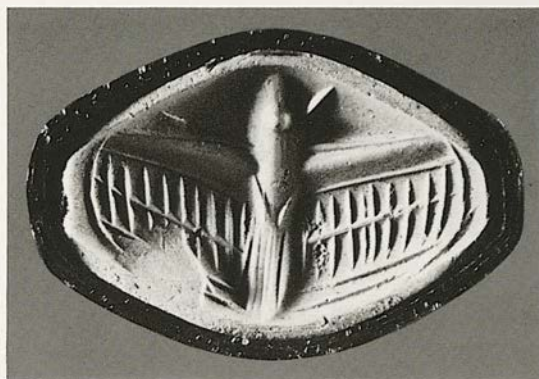
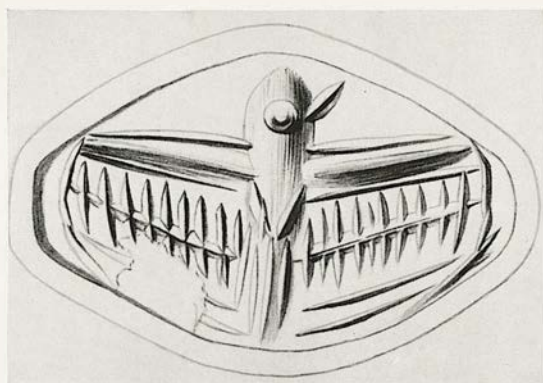
Winged griffin to the right.



121. B. M. (GR/R) 1883. 3-8. 1  
 Calcined by fire; perhaps cornelian  
 $\phi$  2,6 x 1,9. S. H. 0,15-0,2  
 Glandular shaped seal with faceted back

Wounded lion to the left.

Walters, *Cat.* no. 30.



122. B.M. (GR/R) 1956. 2-15. 2  
 Black jasper  
 $\phi$  2,3 x 1,5. S.H. 0,2  
 Glandular shaped seal

Flying bird. Appears to be talismanic in style.





123. B. M. (GR/R) 1877. 7-28. 3  
 Spartan basalt  
 $\phi$  1,7-1,8. S. H. 0,15  
 Lentoid  
 From Crete

Human legs conjoined with the foreparts of a goat in profile and with those of a bull 'en face'. The monster is wearing a Minoan loin cloth.

Milchhöfer, *Anfänge* 78 fig. 50. Furtwängler-Loeschcke, *MV.* pl. E 25. Imhoof-Blumer u. Keller, *Tierbilder* pl. 26 fig. 57. Murray, *Handbook* 41 fig. 28. Collignon, *Histoire de la Sculpture Grecque* I (1892) 57 fig. 36. Perrot-Chipiez VI 851 fig. 432 no. 15. Cook, *JHS.* 14, 1894, 120 fig. 15, and pp. 130, 150. Furtwängler, *AG.* I pl. 2 fig. 41. Cook, *Zeus* I (1914) 704 fig. 516. Walters, *Cat.* no. 86. Kenna, *Seals* 56 note 2, 59 no. 23, 79 note 3. *Encycl. Brit.*<sup>11</sup> XI pl. 1 fig. 9. Bought 1877.



124. B. M. (GR/R) 1874. 3-5. 8  
 Spartan basalt  
 $\phi$  1,7. S. H. 0,15  
 Lentoid

Foreparts of a Cretan goat united to the body and hind quarters of a lion; each part being inverted with respect to the other.

*RA.* 28, 1874 pl. 12 fig. 4. Imhoof-Blumer u. Keller, *Tierbilder* pl. 17 fig. 42. Furtwängler, *AG.* I pl. 3 fig. 36. Walters, *Cat.* no. 62. Kenna, *Seals* 56 note 2, 59 no. 20, 79 note 3.  
 Bought 1874.



125. B. M. (GR/R) 1877. 7-28. 4  
 Spartan basalt  
 $\varnothing$  2,0-2,1. S. H. 0,2  
 Lentoid  
 From Crete

Lion holding deer-like goat under foreshoulder;  
 a sacral knot in the field below.

Imhoof-Blumer u. Keller, *Tierbilder* pl. 14 fig. 28.  
 Furtwängler, *AG.* I pl. 3 fig. 7. Walters, *Art* pl. 88, 21.  
 Walters, *Cat.* no. 43. Evans, *PM.* IV 583 Supplementary Plate LVc.





126. B. M. (GR/R) 1899. 6-9. 1  
 Haematite  
 $\phi$  1,7-1,8. S.H. 0,15  
 Lentoid  
 From Cyprus

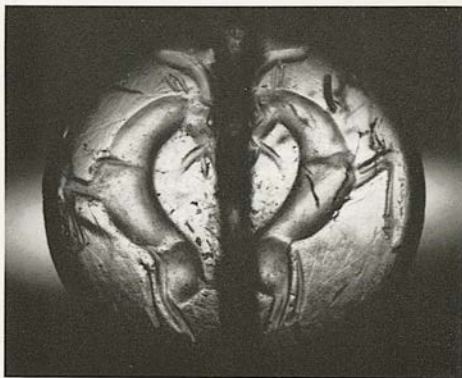
Ass headed monster conjoined with two collared dogs runs to the left.

Furtwängler, *AG*. I pl. 65 fig. 1. Walters, *Art* pl. 88, 5.  
 Walters, *Cat.* no. 84. Lippold, *Gemmen* pl. 80, 3. Kenna, *Seals* 56 note 2.



127. B. M. (GR/R) 1938. 11-15. 1  
 Brown and white banded agate  
 $\phi$  2,6-2,8. S. H. 0,2  
 Lentoid

Two Cretan bulls at rest. There is a double ground line.



128. B. M. (GR/R) 1923. 4-1. 3

Rock crystal

$\phi$  2,8. S. H. 0,2

Lentoid

The section at all diameters is that of a true ellipse, with a bevelled edge

Two Cretan goats in the attendant position, but antithetically disposed.

Imhoof-Blumer u. Keller, *Tierbilder* pl. 18 fig. 24.  
 Perrot-Chipiez VI pl. 16 fig. 13. Walters, *Cat.* no. 61.





129. B.M. (GR/R) 1874. 4-5. 5

Cornelian

ϕ 1,6-1,8. S.H. 0,15

Lentoid

From Crete

Single combat. A man with a sword attacks a warrior with an oblong shield of semi-cylindrical character.

Furtwängler-Loeschke, *MV.* pl. E 30. *RA.* 36, 1878, pl. 20 fig. 5. Murray, *Handbook* 44 fig. 34. Furtwängler, *AG.* I pl. 2 fig. 4. Reichel, *Waffen*<sup>2</sup> 4 fig. 12. Walters, *Art* pl. 88, 8. Walters, *Cat.* no. 80.

Bought 1874.



130. B. M. (GR/R) 1874. 4-5. 4

Burnt sard

Ø 1,7. S. H. 0,15

Lentoid

From Crete

Three men enact a cult scene.

This stone is probably from the same workshop as the amethyst lentoid from Tragana (grave 1), Pylos, cf. *CMS*. I no. 263.

Furtwängler, *AG*. I pl. 2 fig. 6. Walters, *Cat.* no. 81.



131. B. M. (GR/R) 1854. 5-17. 147  
 Banded agate  
 $\phi$  1,8-2,2. S. H. 0,2  
 Lentoid

A man spearing an ibex.

*RA.* 36, 1878 pl. 20 fig. 6. Furtwängler-Loeschke, *MV.*  
 pl. E 27. Imhoof-Blumer u. Keller, *Tierbilder* pl. 17  
 fig. 47. Murray, *Handbook* 43 fig. 31. Perrot-Chipiez  
 VI 851 fig. 432 no. 3. Furtwängler, *AG.* I pl. 2 fig. 15.  
 Walters, *Cat.* no. 76. Kenna, *Seals* 76 no. 3 fig. 163.  
 Obtained by C. T. Newton, 1854.





132. B. M. (GR/R) 1952. 5-6. 2  
Red banded agate  
 $\phi$  2,0  $\times$  1,5. Th. 1,0. S. H. 0,2  
Stamp in form of a figure of eight body shield. There is no engraving on the reverse.

LATE MINOAN IIIA

Nos. 133-137



133. B. M. (GR/R) 1937. 3-19. 1  
Cornelian  
 $\phi$  1,8. S. H. 0,2  
Lentoid

Two bucrania antithetically disposed. Talismanic style.





134. B. M. (GR/R) 1932. 4-1. 4  
 Green jasper  
 $\phi$  1,8-2,0. S.H. 0,2  
 Lentoid

Goddess standing on the waves with two swans  
 in full flight as attendants.

*RA.* 36, 1878 pl. 20 fig. 3. Milchhöfer, *Anfänge* 86 fig. 56 a. Studniczka, *Kyrene* (1890) 164 fig. 34. Murray, *Handbook* 45 fig. 37. Perrot-Chipiez VI 851 fig. 432 no. 2. Furtwängler, *AG.* I pl. 2 fig. 28. Walters, *Art* pl. 88, 9. Walters, *Cat.* no. 82. *Encycl. Brit.*<sup>11</sup> XI pl. 1 fig. 16. Compare the amethyst gem from Vaphio (*CMS.* I no. 233).



135. B. M. (GR/R) 1947. 9-26. 23

Agate

$\phi$  2,9-3,2. S. H. 0,2

Lentoid

A royal griffin with wings fully displayed; perhaps a trial piece.

*Brit. Mus. Quarterly* 23, 1960/61, 108.



136. B.M. (GR/R) 1934. 11-20. 13  
Haematite  
Φ 1,7-1,8. S.H. 0,15-0,2  
Lentoid

Unfinished engraving of a bull in simple torsion.  
Perhaps a trial piece.

137. B.M. (GR/R) 1960. 10-1. 1  
Blue glass  
Φ 1,6-1,7. S.H. 0,1  
Lentoid

A lion in simple torsion. Special technique to suit  
the material.

Presented by Dr. Kahn.



LATE MINOAN IIIB

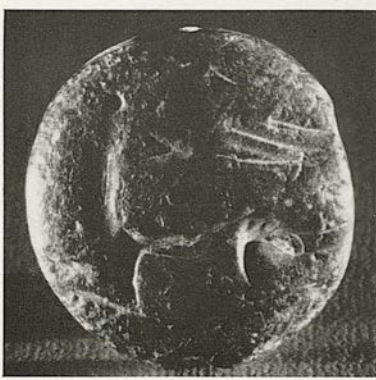
Nos. 138-153



138. B.M. (GR/R) 1874. 3-5. 34  
 Basalt  
 $\phi$  1,6-1,7. S. H. 0,15  
 Lentoid

Monster with head and foreparts of a stag, contorted. Within the field an impaled triangle.

Cook, *JHS.* 14, 1894, 133 fig. 17. Walters, *Cat.* no. 85.



139. B.M. (GR/R) 1905. 7-13. 3  
Black marble  
 $\phi$  1,9. S.H. 0,15  
Lentoid with full carination  
From Knossos

Cretan goat running to the right to evade a lance.

Walters, *Cat.* no. 50.

140. B.M. (GR/R) 1934. 11-20. 16  
Green slate  
 $\phi$  1,7. S.H. 0,3  
Lentoid

Winged griffin to the right.





141. B.M. (GR/R) 1947. 9-26. 39  
 Steatite  
 $\phi$  1,7. S.H. 0,25  
 Lentoid

Goddess with bird wings. Two plants in the field take the place of attendant animals.

142. B.M. (GR/R) 1947. 9-26. 41  
 Green steatite  
 $\phi$  1,5. S.H. 0,15  
 Lentoid

Goddess as bird; the skirt becomes a tail. In the field are two cult objects.



143. B.M. (GR/R) 1952. 5-5. 1  
Dark green steatite  
 $\phi$  1,35. S.H. 0,15  
Lentoid

Goddess as bird. All above the waist birdlike, all below the waist human.

144. B.M. (GR/R) 1947. 9-26. 43  
Dark green steatite  
 $\phi$  1,0-1,2. S.H. 0,15  
Lentoid

Goddess as bird. Emphasis upon the bird attributes but the body curvature derives from the sacred dance.





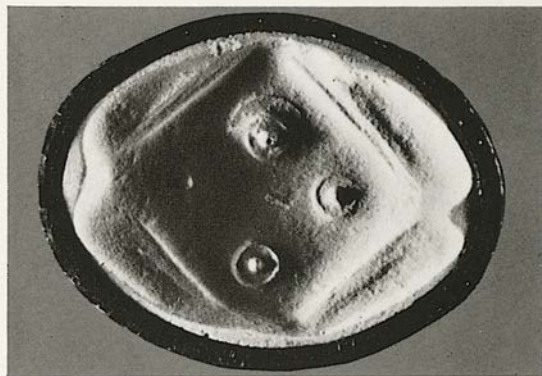
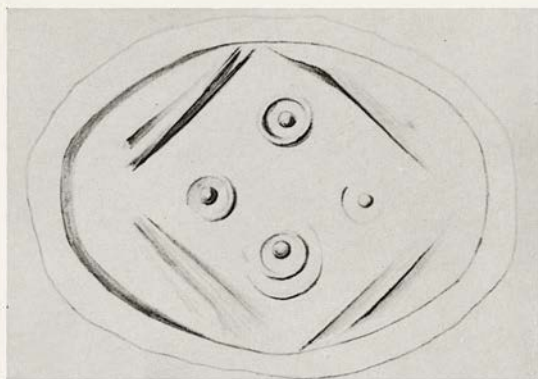
145. B. M. (GR/R) 1947. 9-26. 40  
Dark green steatite  
 $\phi$  1,7. S.H. 0,2  
Lentoid

146. B. M. (GR/R) 1952. 5-7. 1  
Dark green steatite  
 $\phi$  1,8. S.H. 0,15  
Lentoid

Young bull running to the left regardant; a branch in the field.

Remains of an animal curved to fit the field.





147. B. M. (GR/R) 1947. 9-26. 26

Dark green steatite

$\phi$  2,0  $\times$  1,5. S.H. 0,15

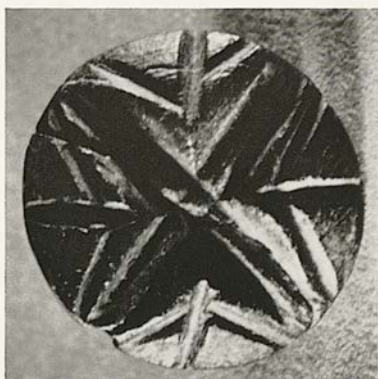
Glandular shaped seal

Four groups of tubular drill marks within a square engraved diagonally to the field.



148. B. M. (GR/R) 1947. 9-26. 42  
 Dark green steatite  
 $\phi$  1,8. S. H. 0,2  
 Lentoid  
 Much worn

Bull with inverted forequarters. A late adaptation of the earlier theme; perhaps a reuse of an older gem.



149. B. M. (GR/R) 1947. 9-26. 22  
Dark brown steatite  
 $\phi$  1,7-1,8. S. H. 0,15  
Lentoid

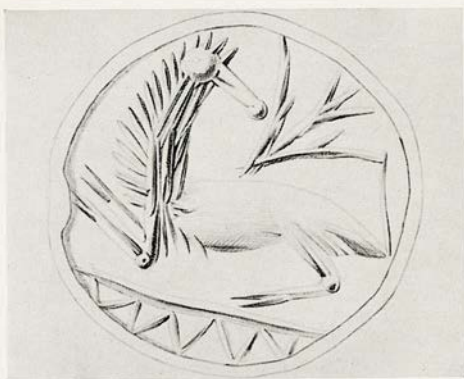
Doorway or geometric pattern of saw cuts. Cf. no. 147.

150. B. M. (GR/R) 1934. 11-20. 10  
Blackish grey steatite  
 $\phi$  1,2-1,3. S. H. 0,15  
Lentoid with full carination

Four pointed star, with a dart in each quarter.



Nos. 151, 152, 153 represent a class more common to the Mainland than to Crete. An early instance of Mainland use was found in Tomb no. 515 at Mycenae (*CMS. I no. 143*); a later copy in glass in Prosymna Tomb 13 (*CMS. I no. 212*). No. 139 above, however, appears to be Cretan in all respects, and it is believed that many of these stones of quarry subjects with quasi-talismanic characteristics were probably of Cretan manufacture, but made with an eye to Mainland use. Perhaps no. 139 is also related to this group.

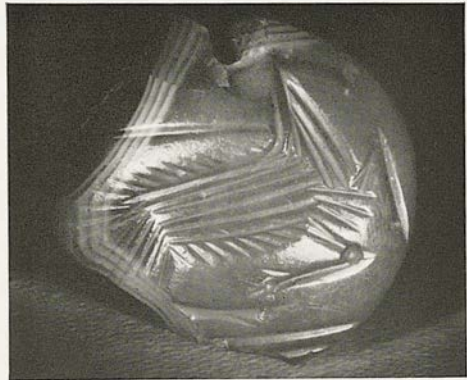
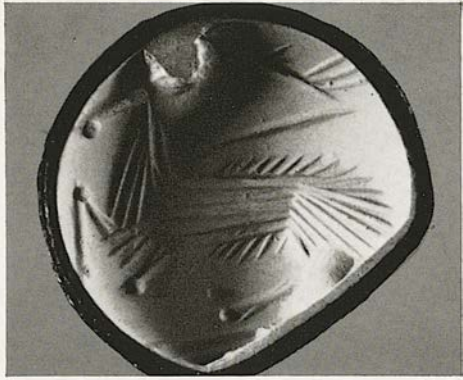
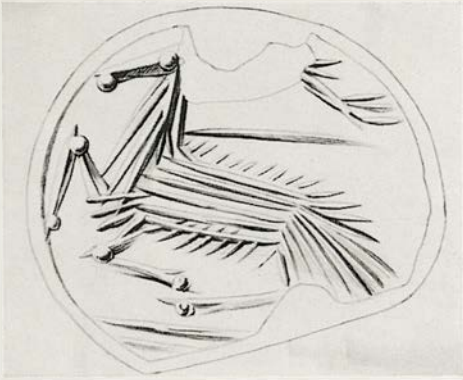


151. B. M. (GR/R) 1872. 3-15. 2  
 Rock crystal  
 $\phi$  2,5. S. H. 0,2  
 Lentoid  
 From Ialysos

Quadruped, perhaps equine, moving to the left regardant. Representation of a tree in the field. An exergue with zigzag pattern.

Furtwängler-Loeschcke, *MV.* pl. E 4. Furtwängler, *AG.* I pl. 4 fig. 4; III 33. Walters, *Art* pl. 88, 28. Walters, *Cat.* no. 64. Kenna, *Seals* 76 section 4 fig. 165, 79 note 7.

Presented by Prof. Ruskin, 1872.



152. B. M. (GR/R) 1882. 10-14. 5  
 Banded agate  
 $\phi$  2,1-2,3. S. H. 0,2  
 Lentoid

Deer, wounded with a shaft, running to the left.  
 A double ground line.

Walters, *Cat.* no. 52. Kenna, *Seals* 76 section 4 fig. 164.





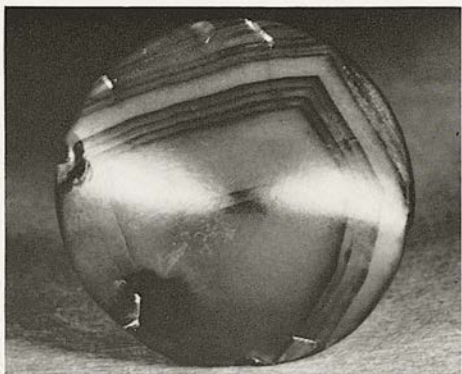
153. B. M. (GR/R) 1874. 3-5. 6  
 Haematite  
 $\phi$  1,8-1,9. S. H. 0,15  
 Lentoid

Long haired goat running to the left, wounded by a shaft. Triple ground line.

Walters, *Cat.* no. 197.

LATE HELLADIC IIB

Nos. 154-158



154. B. M. (GR/R) 1872. 3-15. 46  
Cornelian  
 $\phi$  2,0-2,1. S. H. 0,2  
Lentoid with low conoid back  
From Ialysos

Two lions attend the sacred pillar. They are regardant.

Curtius, *Wappengebrauch* 3. Furtwängler-Loeschcke, *MV.* pl. E 6. Imhoof-Blumer u. Keller, *Tierbilder* pl. 14 fig. 6. Murray, *Handbook* 46 fig. 40. Furtwängler, *AG.* I pl. 3 fig. 20; III 51. Walters, *Art* pl. 88, 10. Walters, *Cat.* no. 46. *Encycl. Brit.*<sup>11</sup> XI pl. 1 fig. 8. Presented by Prof. Ruskin, 1872.

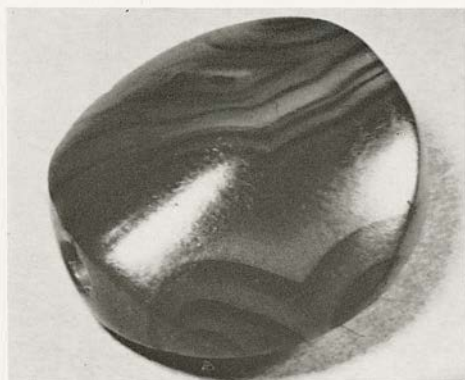




155. B. M. (GR/R) 1921. 12-12. 7  
 Black marble  
 $\phi$  1,9-2,0. S. H. 0,25  
 Lentoid  
 From Melos

Dog to the right regardant and a pillar with moulded capital of Helladic type. The pillar appears notched, like a palm tree.

Walters, *Cat.* no. 184.



156. B. M. (GR/R) 1930. 4-16. 3  
Red banded agate  
 $\phi$  1,5. S. H. 0,15  
Lentoid  
Thick with high carination

Unfinished engraving of cow licking hind hoof.

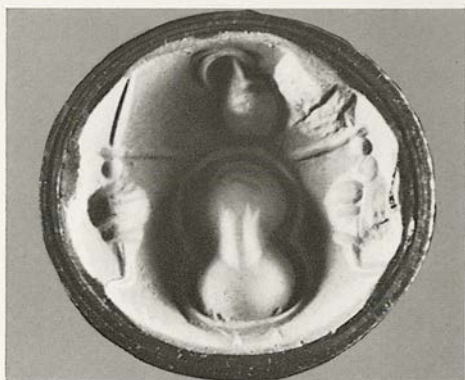


157. B. M. (GR/R) 1874. 3-5. 11  
 Soft red stone (perhaps steatite)  
 $\phi$  1,7-1,9. S. H. 0,2  
 Lentoid with high carination

Bull in partial contortion. Ribbed barrel-like object in the field.

*RA.* 28, 1874 pl. 12 fig. 2. Walters, *Cat.* no. 186.





158. B. M. (GR/R) 1935. 4-30. 1  
 White amethyst  
 $\phi$  1,7-1,8. S. H. 0,2  
 Lentoid

Panoply or goddess in military array. A figure of eight body shield surmounted by a crested helmet. Two pommelled swords held erect over objects which appear to be symbols of lions' heads.

LATE HELLADIC IIIA

Nos. 159-177



159. B. M. (GR/R) 1910. 6-15. 8  
 Grey-brown banded agate  
 $\phi$  3,5-3,7. S. H. 0,2  
 Lentoid

A maned lion with dugs attacks two fallow deer.  
 A double irregular ground line and a tree in the field.

Walters, *Cat. no. 48. Encycl. Brit.*<sup>11</sup> XI pl. 1 fig. 10.





160. B. M. (GR/R) 1888. 5-12. 1  
 Pink and white banded agate  
 $\phi$  2,5. S. H. 0,2  
 Lentoid  
 From Calabria

Antlered deer giving suck, attacked by a dog or  
 beast of prey.

For the antlers, Keller, *Tiere des klassischen Alter-  
 tums* (1887) 362 note 215. Imhoof-Blumer u. Keller,  
*Tierbilder* pl. 17 fig. 18. Walters, *JHS.* 1897, 69 pl. 3  
 fig. 9. Beazley, *The Lewes House Collection of An-  
 cient Gems* (1920) 2. Walters, *Art* pl. 88, 31. Walters,  
*Cat.* no. 55.  
 Bought 1888.



161. B. M. (GR/R) 1892. 11-30. 2

Rock crystal

Ø 2,0-2,2. S. H. 0,2

Lentoid

From Sparta

Bull to the right, sword and branch in the field.

Walters, *JHS.* 17, 1897, 69 pl. 3 fig. 6. Walters, *Art*

pl. 88, 20. Walters, *Cat.* no. 75.

Bought 1892.



162. B. M. (GR/R) 1934. 1-20. 2

Rock crystal

$\phi$  1,8-1,9. S. H. 0,15

Lentoid

Bull to the right, licking its back. Sacral shield beneath; before, a tree or branch on a plinth.





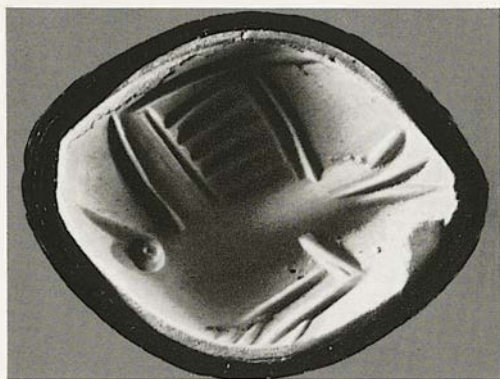
163. B. M. (GR/R) 1959. 3-31. 2

Rock crystal

$\phi$  1,8-2,0. S. H. 0,15

Lentoid

Bull to the right nosing the ground. Two plants beneath. The curious angle at which the form of the bull is engraved may suggest a dubious origin, but the condition of the stone and material in spite of the awkward style, suggests antiquity.



164. B. M. (GR/R) 1959. 3-31. 3

Rock crystal

$\phi$  1,8 x 2,4. S. H. 0,2

Glandular shaped seal

A bird alighting. Style influenced by the Knosian talismanic style.



165. B. M. (GR/R) 1930. 12-15. 3  
 Mottled sard  
 $\phi$  1,4-1,6. S. H. 0,2  
 Lentoid

A bird perched to the right. Style and technique influenced by Knossian talismanic use.





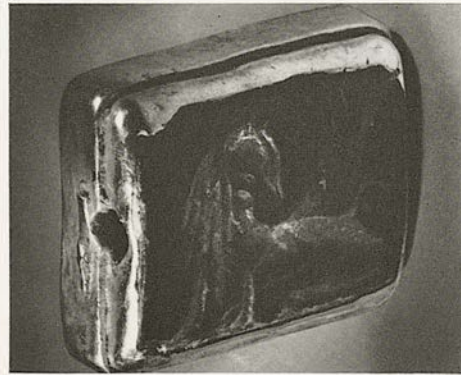
166. B. M. (GR/R) 1930. 12-15. 5  
Black marble  
 $\phi$  1,7-1,8. S. H. 0,2  
Lentoid

Bull tossing its head and running to the left.



167. B. M. (GR/R) 1930. 4-16. 6  
 Brown cornelian  
 $\varnothing$  1,7-1,8. S. H. 0,15  
 Lentoid

Cretan goat standing to the left on a simple hatched exergue, a flower before him and plants beneath and behind.

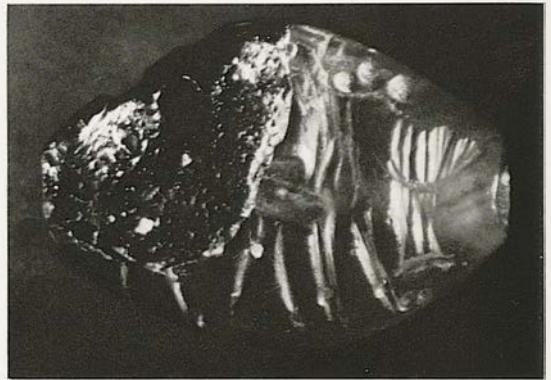


168. B. M. (GR/R) 1897. 4-1. 1  
 Lapis lazuli  
 L. 1,4. W. 1,6. S. H. 0,3 and 0,2  
 Flattened cylinder mounted in ancient gold.  
 From Enkomi Tomb 1

A lion seated to the right, regardant. A large barb or stylized tree in the background.

Murray, *Excavations in Cyprus* (1900) pl. 4 no. 1.  
 Walters, *Cat.* no. 105.





169. B. M. (GR/R) 1923. 4-24. 1  
 Cornelian  
 $\phi$  2,0x1,5. S. H. 0,15-0,2  
 Amygdaloid with faceted back

A captive lion before a manger. The feet and legs of the attendant remain. The rest is lost through fracture.

Walters, *Cat.* no. 37.



170. B. M. (GR/R) 1884. 6-25. 5  
Amethyst  
 $\phi$  1,4-1,5. S. H. 0,15  
Lentoid

Goat standing to the left netted with a spear.  
Two plants in the field.

Walters, *Cat.* no. 58.



171. B.M. (GR/R) 1930. 4-16. 2  
Red banded agate  
 $\phi$  1,5-1,7. S.H. 0,15  
Lentoid

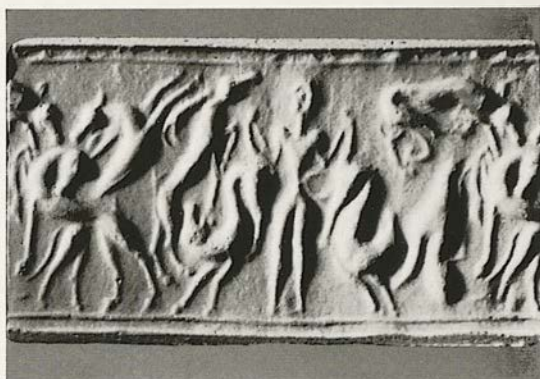
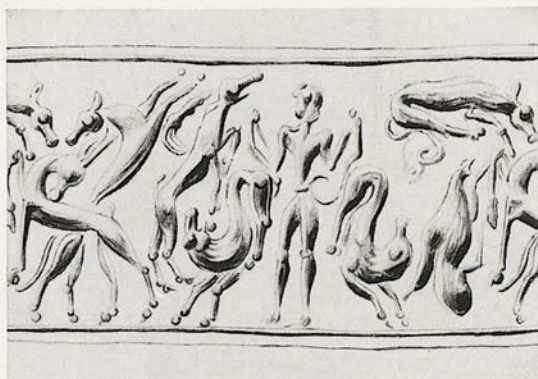
Wounded lion seated to the right; a double ground line.





172. B.M. (GR/R) 1934. 11-20. 11  
 Yellow and red opaque mottled agate  
 $\phi$  2,0. S. H. 0,2  
 Lentoid  
 The edges of the stone have been lost by fracture

Two Cretan goats standing one behind the other, facing in opposite directions. Two sacral shields and one plant or stylized tree below.



173. B. M. (GR/R) 1945. 10-13. 133

Haematite

L. 1,7.  $\phi$  0,9. S.H. 0,2-0,3

Cylinder

From Golgoi, Cyprus

The master of the animals holds two captive lions subdued; an ibex worships; a winged griffin forms with another ibex, attacked by a lion, another antithetic and attendant pair.

Kenna, *Seals* 64 note 7 (thought at that time to have been purely Minoan).

From the Southesk Collection.



174. B. M. (GR/R) 1956. 2-15. 1  
 Red and cream coloured agate  
 L. 1,9.  $\phi$  0,4-1,0. S. H. 0,2  
 Barrel shaped cylinder

An agrimi and a winged griffin intersert with solar symbols. The forms are engraved parallel with the major axis of the cylinder.





175. B. M. (GR/R) 1908. 4-10. 6  
 Striated grey agate  
 $\Phi$  1,9. Th. 0,35. S. H. 0,15  
 Lentoid

Stag running to the left attacked by a bird and a dog. The shallow engraving advertizes the thinness of the stone.

Walters, *Cat.* no. 56.



176. B.M. (GR/R) 1872. 6-4. 1132

Agate

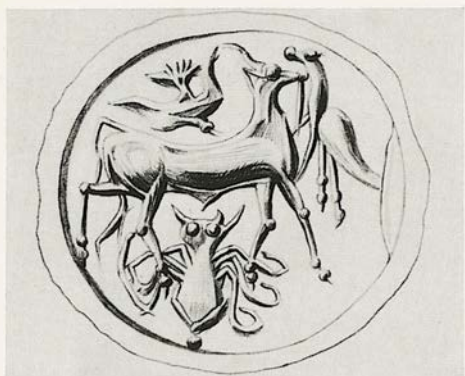
$\phi$  2,0-2,1. S.H. 0,2

Lentoid

Recumbent ox, attacked by a wolf-headed lion  
and a human-headed sphinx.

Imhoof-Blumer u. Keller, *Tierbilder* pl. 17 fig. 46.  
Furtwängler, *AG.* I pl. 2 fig. 48; III 42. Walters, *Art*  
pl. 88, 19. Walters, *Cat.* no. 74.

From the Santangelo Coll. Castellani, 1872.



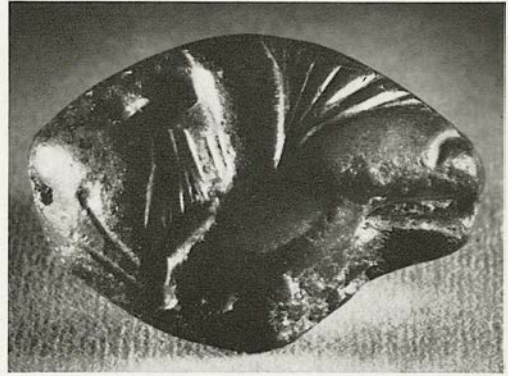
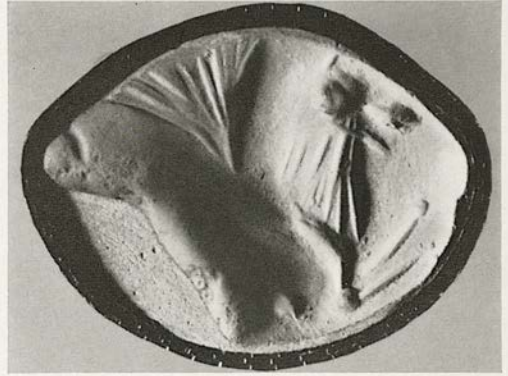
177. B.M. (GR/R) 1934. 1-20. 3  
 Brown, blue and white banded agate  
 $\phi$  2,1. S.H. 0,15  
 Lentoid

Young bull attacked in the front by a birdlike creature and above by a flying bird; an octopus beneath.



LATE HELLADIC III B

Nos. 178-184



178. B. M. (GR/R) 1874. 4-5. 6

Haematite

$\phi$  2,3 x 1,7. S. H. 0,25

Glandular shaped seal

Lion crouching to the right wounded by a barb.

Walters, *Cat.* no. 31.



179. B.M. (GR/R) 1872. 3-15. 178  
 Cornelian  
 $\phi$  1,7. S.H. 0,15  
 Lentoid  
 From Ialysos

Group of three ibex stand to the left. Two are alert, one grazes.

Furtwängler-Loeschke, *MV.* pl. E 7. Walters, *Cat.* no. 54. Kenna, *Seals* 79 note 7.  
 Presented by Prof. Ruskin, 1872.



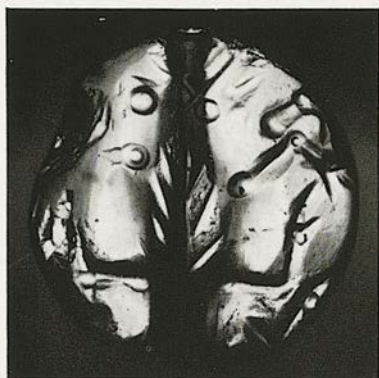


180. B. M. (GR/R) 1934. 11-20. 12b  
Green jasper  
ϕ 1,7-1,9. S. H. 0,25  
Lentoid

A lion attacks a goat on a hill. Curved marks are shown behind the lion, and behind the goat a bucranium.

181. B. M. (GR/R) 1875. 8-20. 2  
Rock crystal  
ϕ 1,8-1,9. S. H. 0,2  
Lentoid

Two lions attack a bull.  
Walters, *Cat.* no. 45.



182. B. M. (GR/R) 1874. 4-5. 2

Rock crystal

$\phi$  2,1-2,2. S. H. 0,3

Lentoid

The stone has been fractured and ground down to obliterate a part of the fracture.

From Crete

Two bulls back to back, the sacred tree between.

Imhoof-Blumer u. Keller, *Tierbilder* pl. 25 fig. 44.

Cook, *JHS.* 14, 1894, 126. Walters, *Art* pl. 88, 18.

Walters, *Cat.* no. 73.

Bought 1874.



183. B. M. (GR/R) B 79.  
 Yellow steatite  
 $\phi$  1,4. S. H. 0,15-0,2  
 Lentoid

Two dolphins and tunny fish. This may be a Melian copy of a Cretan seal, but is probably an ancient Mycenaean example.

Walters, *Cat.* no. 175. Boardman, *Island Gems* 44 no. 144.  
 From the Burgon Collection.





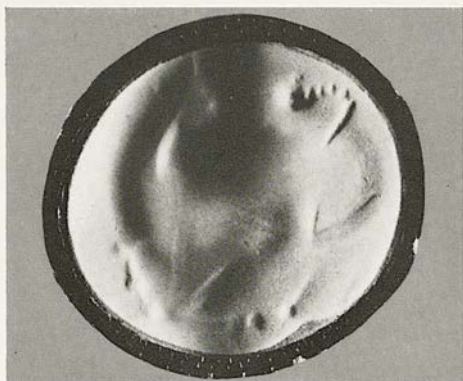
184. B. M. (GR/R) 1875. 8-20. 3  
 Cornelian  
 $\phi$  1,5 x 1,2. S. H. 0,15-0,2  
 Glandular shaped seal

Deer or antelope running to the left, regardant.  
 The accustomed dart has been replaced by a  
 branch.

Walters, *Cat.* no. 33.

LATE HELLADIC IIIC

Nos. 185-203



185. B.M. (GR/R) 1875. 5-10. 2

Banded agate

$\phi$  1,5-1,6. S. H. 0,2

Lentoid

Bull with goat's head behind, perhaps conjoined.

Walters, *Cat.* no. 191.





186. B. M. (GR/R) 1884. 6-28. 1  
Serpentine  
Ø 1,8-1,9. S. H. 0,2  
Lentoid  
From Crete

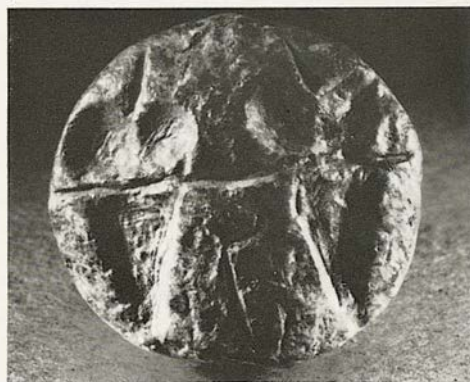
Two deer to the right, one with head erect the other regardant so that they face each other. Branch in the field.

Walters, *Cat.* no. 51.



187. B.M. (GR/R) 1934. 11-20. 14 a  
Green marble  
 $\phi$  1,9. S.H. 0,15  
Lentoid

Two water birds attend a sacred pillar, fluted  
and with a double heavily moulded capital.



188. B.M. (GR/R) 1947. 9-26. 31

Brown marble

$\phi$  2,1. S.H. 0,25

Lentoid

Perhaps an offering of fruit in conical vessels.





189. B. M. (GR/R) 1930. 4-16. 1

Serpentine

$\phi$  2,2. S. H. 0,25

Lentoid

Long horned goat to the left. Tree branch before.



190. B.M. (GR/R) 1875. 8-20. 6  
 Cornelian  
 $\phi$  1,4 x 0,2. S.H. 0,2  
 Truncated glandular shaped seal

Horned quadruped to the right, regardant. Below sacral shield.

Walters, *Cat.* no. 36.



191. B. M. (GR/R) 1899. 12-1. 80  
 Haematite  
 $\Phi$  1,6. S. H. 0,15  
 Lentoid  
 From Crete

Cretan goat to the left; above its back an oxhead with long horns. In the left quarter of the field four circular marks, perhaps two sacral shields.

Walters, *Cat.* no. 57.





192. B. M. (GR/R) 1930. 12-15. 4  
Burnt stone  
 $\phi$  2,1. S. H. 0,2  
Lentoid

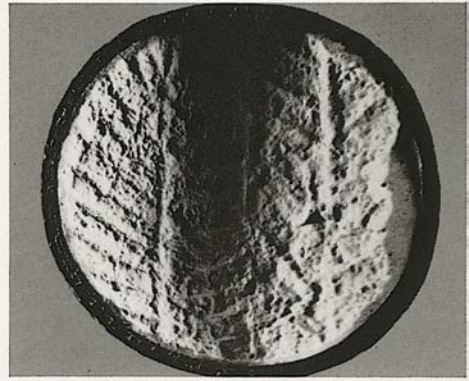
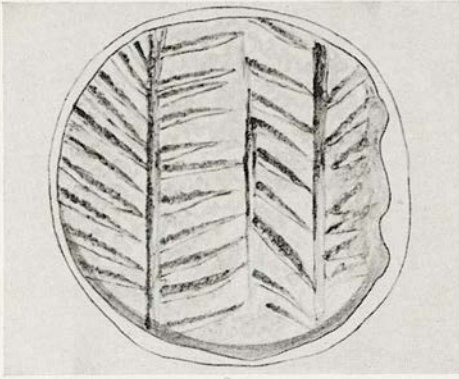
Bull to the left, regardant.



193. B.M. (GR/R) 1874. 4-5. 3  
Serpentine  
 $\phi$  1,7-1,8. S.H. 0,2  
Lentoid  
From Crete

Bull running to the left with head thrown up.

Walters, *Cat.* no. 68.



194. B. M. (GR/R) 1872. 6-20. 48

White glass

$\phi$  2,1. S. H. 0,2

Lentoid

From Ialysos

Two trees.

Kenna, *Seals* 79 note 7.

Presented by Prof. Ruskin, 1872.





195. B. M. (GR/R) 1882. 10-14. 8  
 Dark green steatite  
 $\phi$  1,3-1,5. S. H. 0,2  
 Lentoid

Crested helmet.

Walters, *Cat.* no. 213.

196. B. M. (GR/R) 1883. 3-8. 11  
 Dark steatite  
 $\phi$  1,6. S. H. 0,3  
 Lentoid

Deer running to the left, regardant. One cup sinking above the back.

Walters, *Cat.* no. 190.



197. B. M. (GR/R) 1877. 7-28. 1  
 Dark steatite  
 $\phi$  1,7-1,8. S. H. 0,2  
 Lentoid  
 From Crete

Lion running to the left, over the back the foreparts of a goat.

Milchhöfer, *Anfänge* 82 fig. 53. Furtwängler, *AG.* I pl. 4 fig. 19. Murray, *Handbook* 43 fig. 33. Imhoof-Blumer u. Keller, *Tierbilder* pl. 18 fig. 30. Babelon, *Gravure* 86 fig. 58. *Encycl. Brit.*<sup>11</sup> XI pl. 1, 17. Walters, *Art* pl. 88, 1. Walters, *Cat.* no. 183.



198. B. M. (GR/R) 1884. 6-28. 4

Black steatite

Ø 1,8. S.H. 0,25

Lentoid

From Crete

Lion running to the left; above an eagle with the wings fully displayed.

Imhoof-Blumer u. Keller, *Tierbilder* pl. 20 fig. 39.  
Furtwängler, *AG.* I pl. 4 fig. 18. Walters, *Cat.* no. 181.





199. B. M. (GR/R) 1905. 6-10. 4  
Slate  
 $\phi$  1,9-2,0. S. H. 0,25  
Lentoid

Goddess as bird.



200. B. M. (GR/R) 1874. 3-5. 13

Black steatite

$\phi$  2,0. S. H. 0,2

Lentoid

Goat or antelope standing to the left, regardant.  
There are branches in the field. Shows signs of  
reworking in a clumsy way.

Walters, *Cat.* no. 189.



201. B.M. (GR/R) 1885. 10-13. 191

Steatite

$\phi$  1,7. S.H. 0,2

Lentoid

Shows traces of fire

Quadruped to the left, regardant.

Walters, *Cat.* no. 187.





202. B. M. (GR/R) 1882. 10-14. 11  
 Black marble  
 $\phi$  1,3-1,4. S. H. 0,2  
 Lentoid

Linear design with cup sinkings. Derived from the double axe.

Walters, *Cat.* no. 215.



203. B. M. (GR/R) 1874. 3-5. 37  
Black marble  
 $\phi$  1,6. S. H. 0,2  
Lentoid

Figure of eight shield bordered by plain hatching.

Walters, *Cat.* no. 214.

LATE HELLADIC IIIC - GEOMETRIC

Nos. 204-205





204. B. M. (GR/R) 1889. 7-16. 3

Black steatite

Ø 2,0-2,1. S. H. 0,3

Lentoid

From Kalymnos

Cretan goat standing to the right. The branches  
in the field.

Walters, *JHS.* 17, 1897, 68 pl. 3, 3. Furtwängler, *AG.*  
II 310. Walters, *Cat.* no. 199.



205. B. M. (GR/R) 1905. 6-10. 3  
 Green-brown steatite  
 $\phi$  1,6. S. H. 0,2  
 Lentoid

Quadruped with a long tail (perhaps a long horned bull) to the right. A branch inverted in front.

Walters, *Cat.* no. 63.