

Fred Wendorf's Life in Sixteen Photos (*assembled by Gail Wendorf and Jacek Kabaciński*)



Fig. 1. Young Fred Wendorf, around 1944. At that time he was already enlisted to the army. Due to World War II he suspended his plans to study archaeology at the University of Arizona



Fig. 2. Lieutenant Fred Wendorf in military uniform in 1944, before leaving for Europe. He joined the 10th Mountain Division and during heavy fighting with the Germans in Italy he was seriously wounded in March 1944 near Bologna

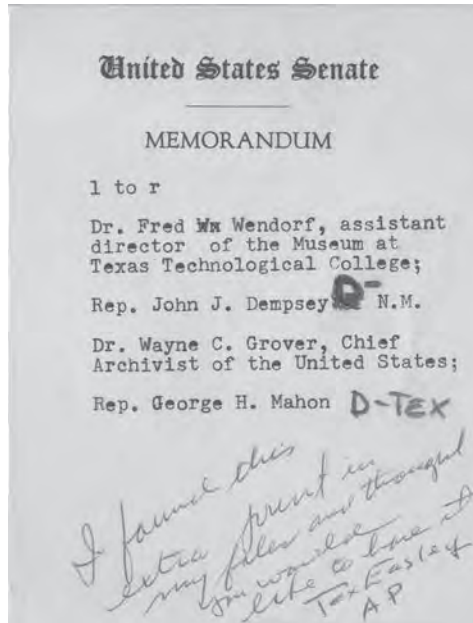


Fig. 3. US Senate Memo re 1958 photo



Fig. 4. Fred Wendorf, Rep. John Dempsey, Dr. Wayne Grover, Rep George Mahon, US Senate, 1958



Fig. 5. Early 1950's, New Mexico. Most of Fred Wendorf's early archaeological career was devoted to salvaging and protecting archaeological heritage. He was a pioneer of large-scale rescue excavations during the construction of highways, pipe-lines and reservoirs in the Southwest United States



Fig. 6. In front of the Laboratory of Anthropology, Santa Fe, New Mexico, 1960. Before moving to Southern Methodist University in 1964, Fred Wendorf was a Director of this laboratory and there his first Egyptian projects were carried out



Fig. 7. Fred Wendorf with Jim Hester from the Museum of New Mexico in Santa Fe, 1960. It was Jim Hester who convinced him to engage in the Aswan Dam salvage archaeological project

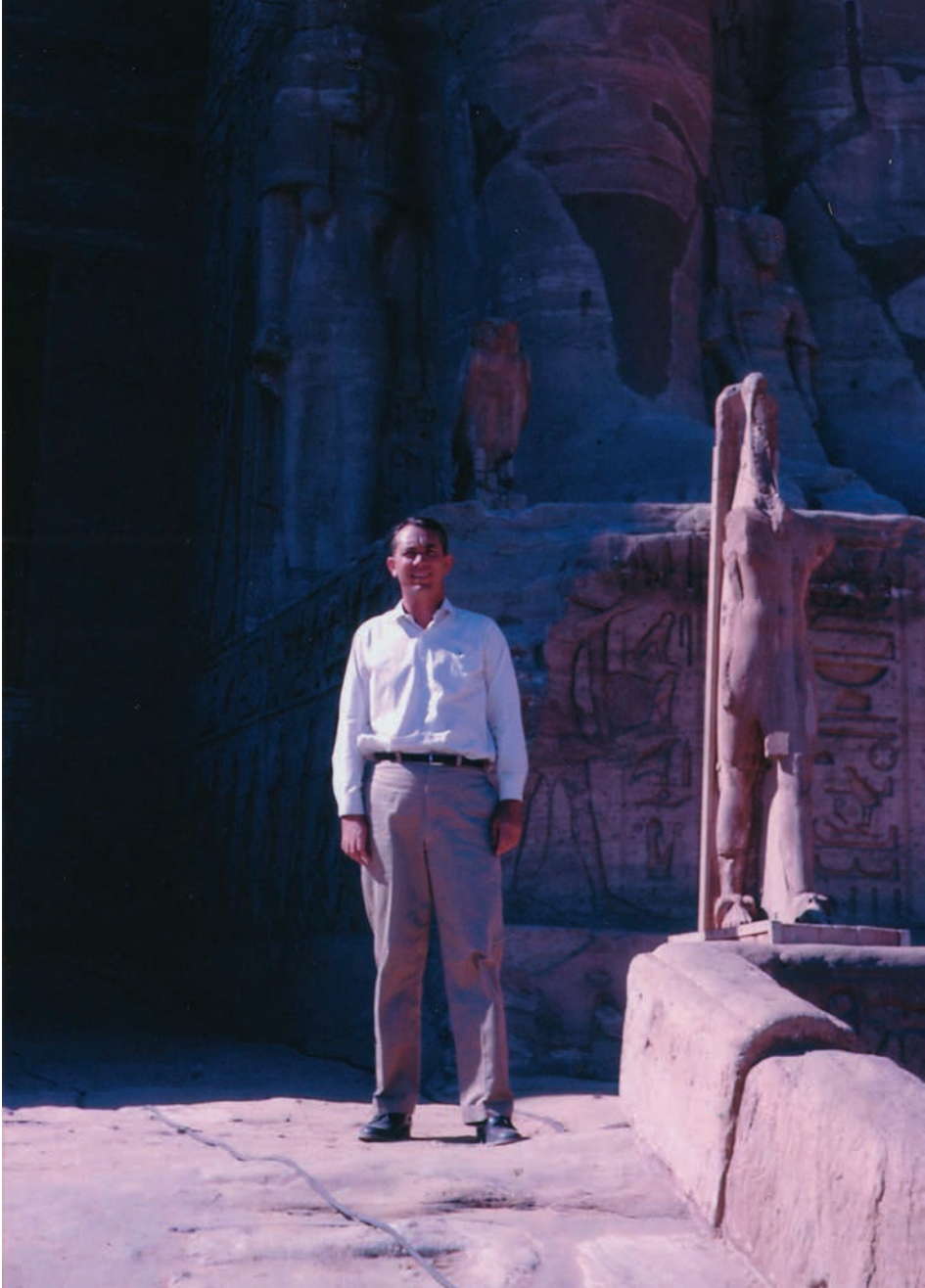


Fig. 8. Aswan, 1963. Fred Wendorf, the director of the Combined Prehistoric Expedition, at the entrance to the Great Temple of Ramesses II before it was dismantled and relocated



Fig. 9. Gebel Sahaba, 1965. Combined Prehistoric Expedition rescue excavations directed by Fred Wendorf recovered a Late Paleolithic cemetery often considered one of the earliest evidence of warfare



Fig. 10. Nile Valley, early 1960's. Fred Wendorf and CPE paleontologist Bob Slaughter



Fig. 11. Fred Wendorf and Egyptian geologist Dr. Rushdi Said. 1967



Fig. 12. Fred Wendorf and Eide Mariff, 2003. Members of Mariff's family from Asjut worked for decades for the Combined Prehistoric Expedition in the Nile Valley and the Western Desert

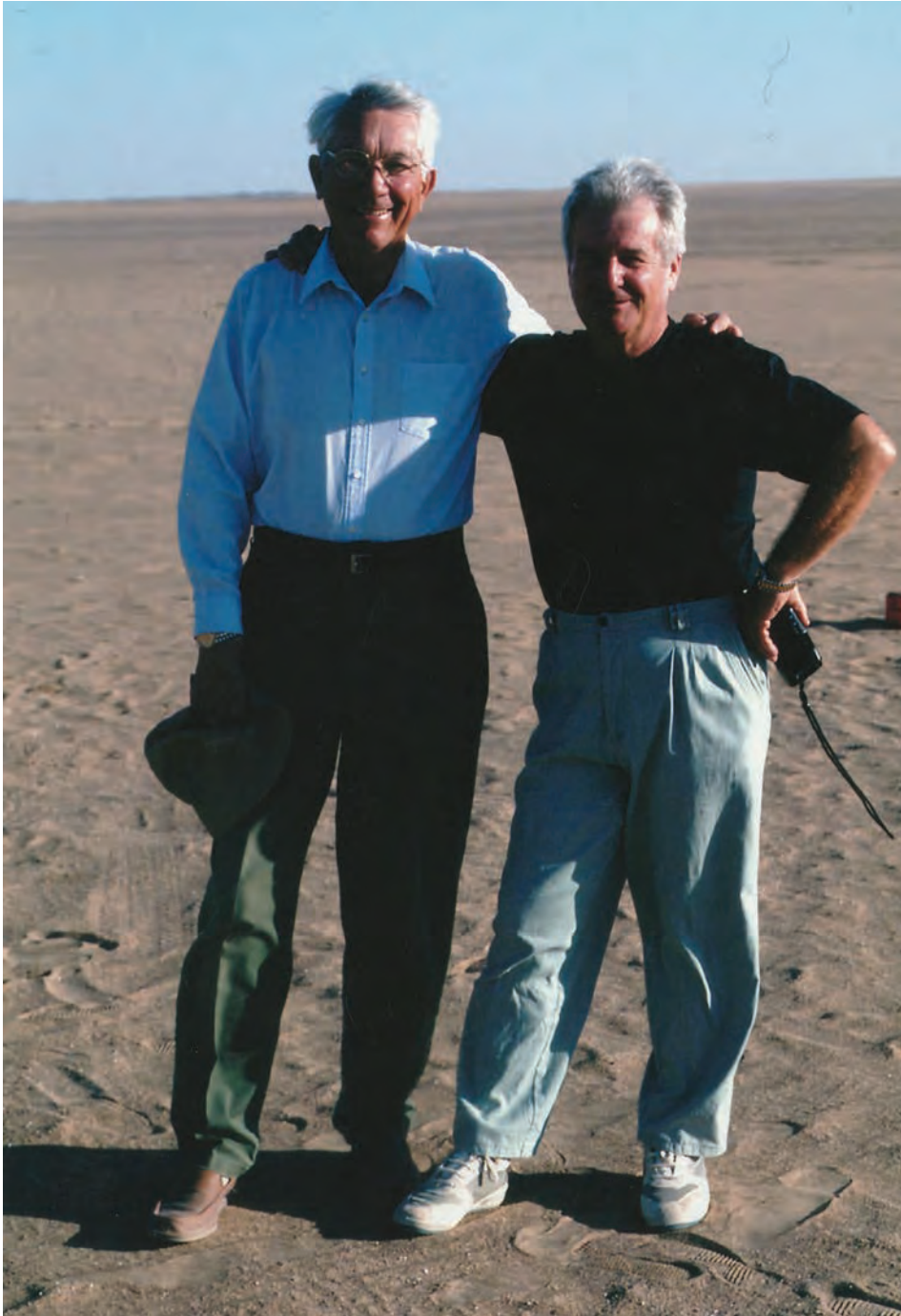


Fig. 13. Best friends. Fred Wendorf and Romuald Schild. Nabta Playa, 2008



Fig. 14. Nabta Playa, early 2000's. Fred Wendorf recovering the megalithic stelae



Fig. 15. Desert camp in Nabta Playa, 2010. Fred Wendorf in his tent

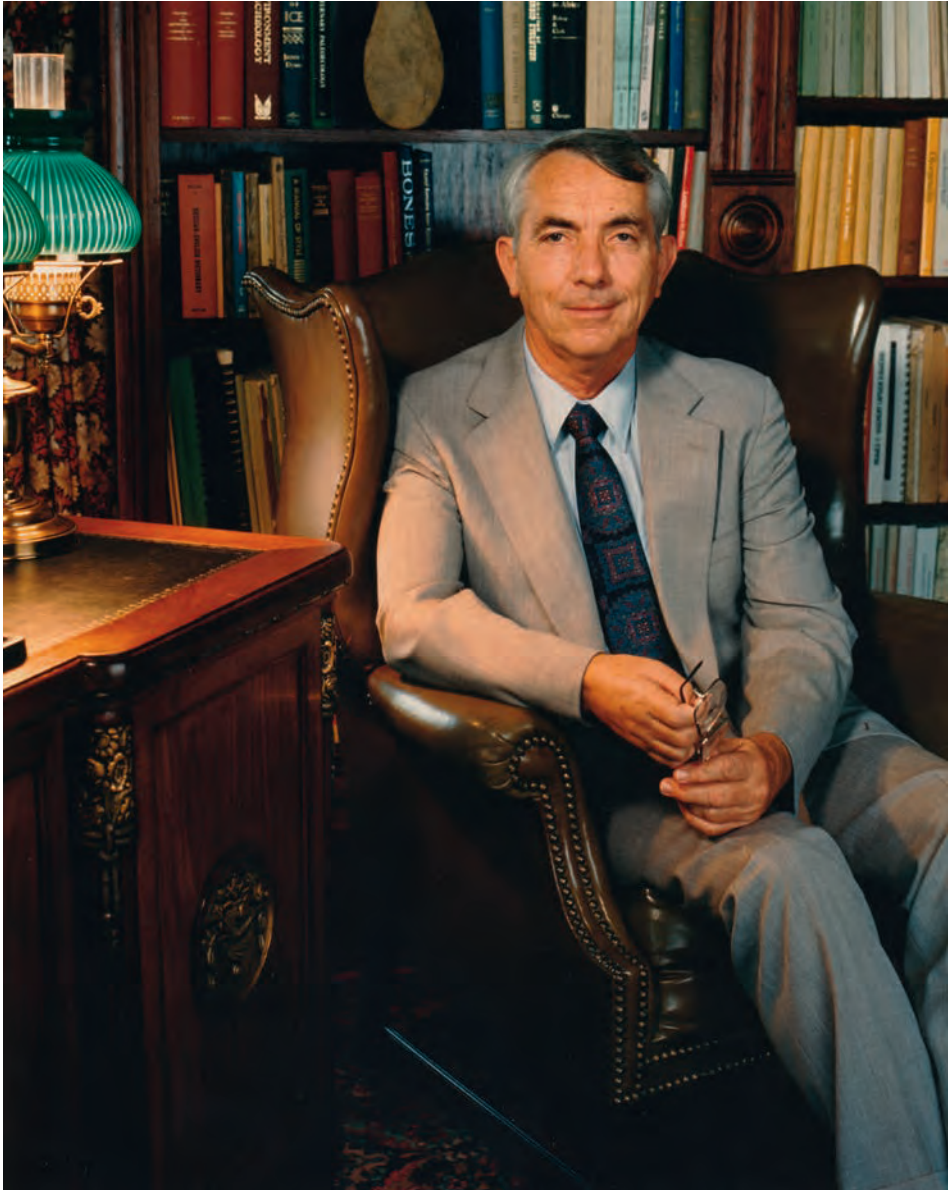


Fig. 16. Fred Wendorf in his house library