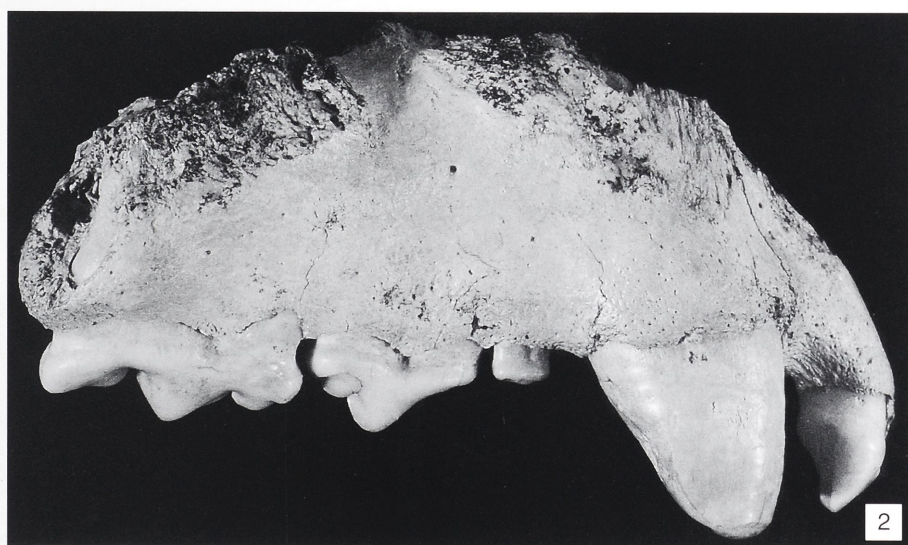
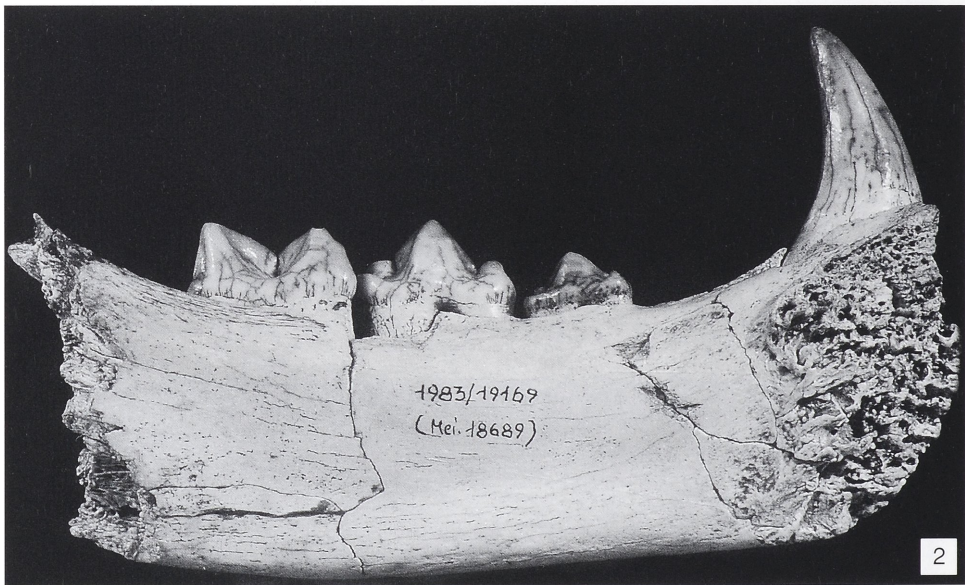


TAFELN 132-151





*Panthera onca gombaszoegensis* (Kretzoi, 1938), Untermassfeld. Oberkieferfragment IQW 1984/20268 (Mei. 19788). – 1 Norma basilaris. – 2 Norma lateralis. – M = ca. 1:1.



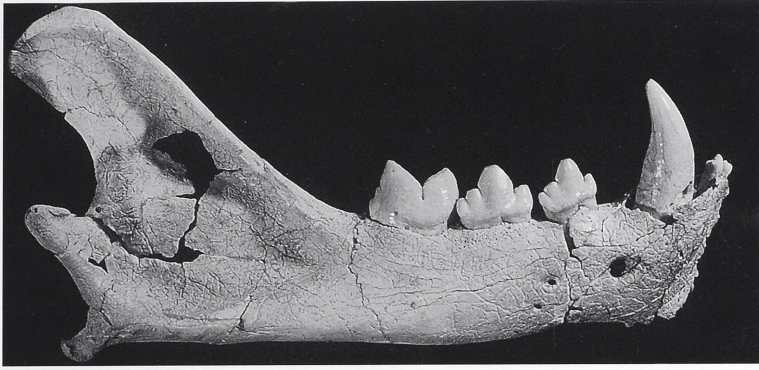
*Panthera onca gombaszoegensis* (Kretzoi, 1938), Untermaßfeld. Mandibelfragment sin. IQW 1983/19169 (Mei. 18689). – 1 buccal.  
2 lingual. – 3 occlusal. – M = ca. 1:1.



*Panthera onca gombaszoegensis* (Kretzoi, 1938), Untermaßfeld. – 1 Mandibelfragment sin. IQW 1992/24137 (Mei. 23666).  
 2, 3 Mandibelfragment dex. IQW 1995/25343 (Mei. 24872); 2 buccal, 3 lingual. – M = ca. 1:1.



*Acinonyx pardinensis pleistocaenicus* (Zdansky, 1925), Untermaßfeld. – 1 Calvarium IQW 1980/16350 (Mei. 15861), Norma basilaris. – 2 Cranium IQW 1980/16350 (Mei. 15861), IQW 1980/15503 (Mei. 15015), IQW 1980/15504 (Mei. 15016), im Bergungszustand. – 1 M = ca. 2:3.



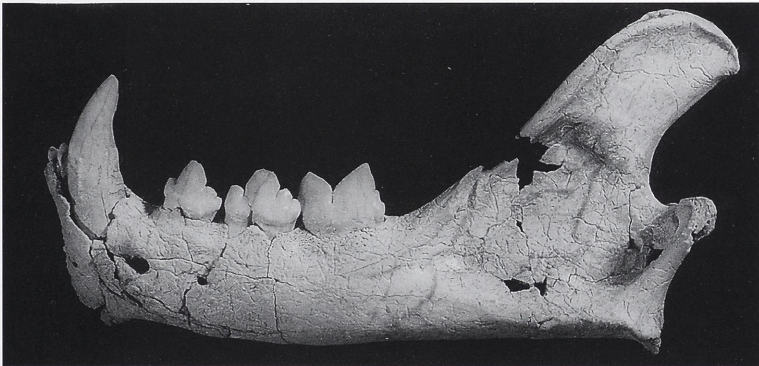
1



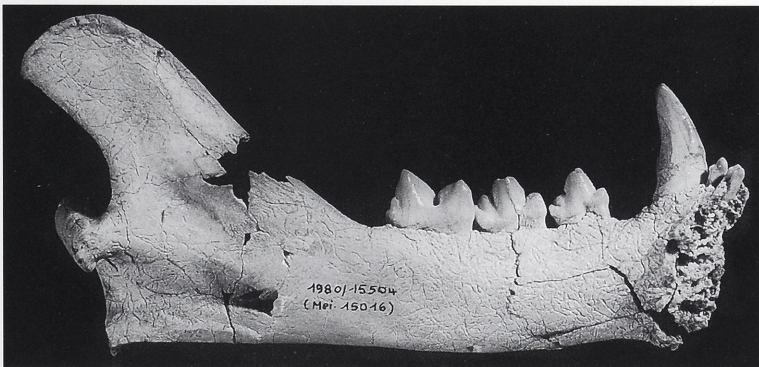
2



3



4



5



6

*Acinonyx pardinensis pleistocaenicus* (Zdansky, 1925), Untermaßfeld. – 1-3 Mandibelast dex. IQW 1980/15503 (Mei. 15015); 1 buccal, 2 lingual, 3 occlusal. – 4-6 Mandibelast sin. IQW 1980/15504 (Mei. 15016); 4 buccal, 5 lingual, 6 occlusal. M = ca. 1:2.

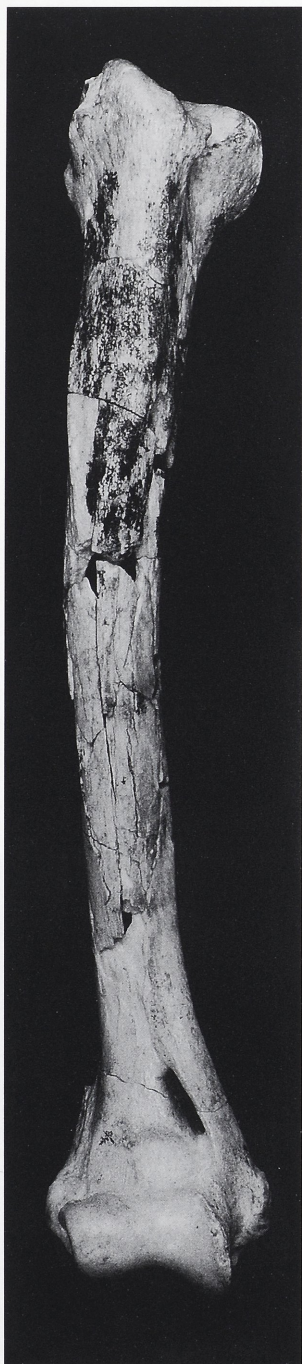


*Acinonyx pardinensis pleistocaenicus* (Zdansky, 1925), Untermaßfeld. – 1-2 Femur dex. IQW 1980/15643 (Mei. 15160); 1 posterior, 2 anterior. – 3-4 Tibia dex. IQW 1980/15874 (Mei. 15385) + IQW 1980/15875 (Mei. 15386); 3 anterior, 4 intern.  
M = ca. 1:2.

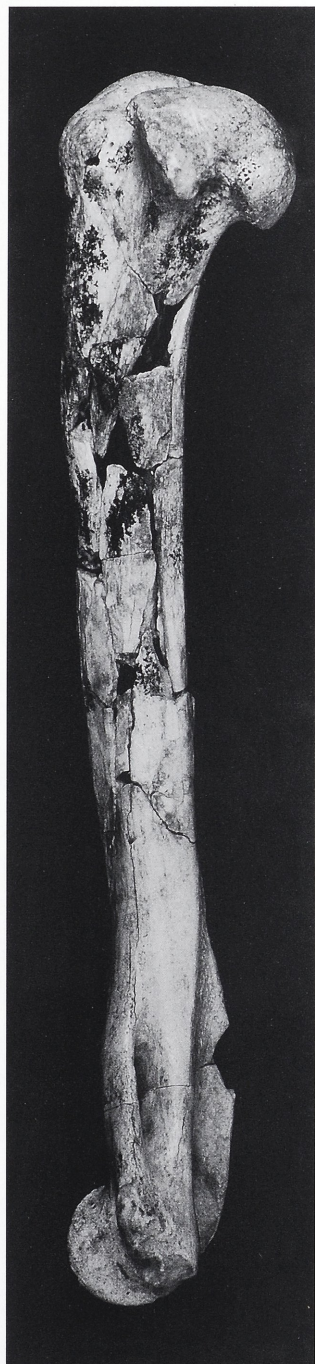




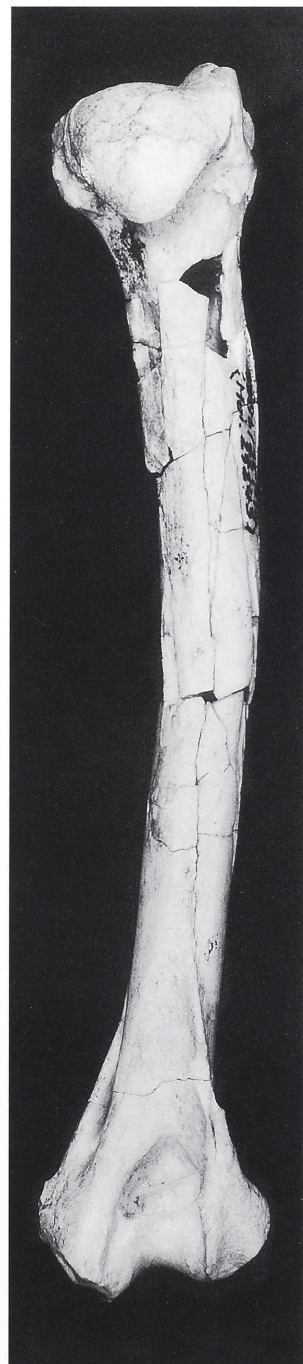
1



2



3

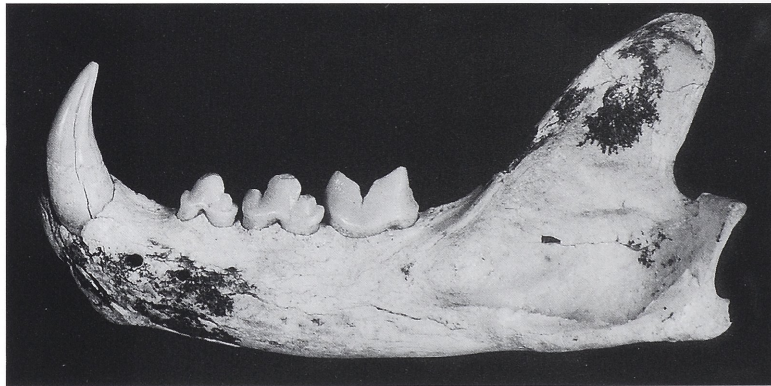


4

*Acinonyx pardinensis pleistocaenicus* (Zdansky, 1925), Untermaßfeld. – 1 Phalanx 1 + 2 + 3 (Fragment), Dig. III der rechten Hinterpfote IQW 1980/15670 (Mei. 15182) + IQW 1980/15671 (Mei. 15183) + IQW 1980/15678 (Mei. 15190).  
*Lynx issiodorensis* (Croizet et Jobert, 1828) ssp. ex aff. *spelaeus* (Boule, 1906), Untermaßfeld. – 2-4 Humerus dex. IQW 1996/25714 (Mei. 25243); 2 anterior, 3 intern, 4 posterior. – M = ca. 1:1.



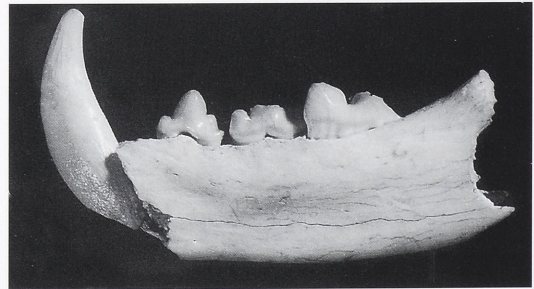
1



2



3

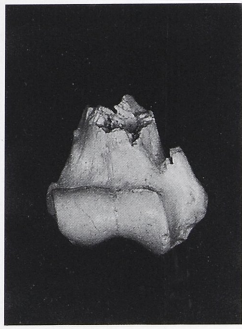


4

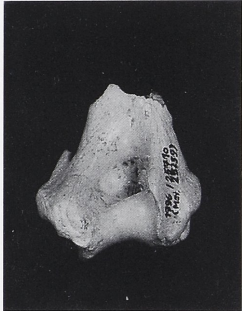


5

*Lynx issiodorensis* (Croizet et Jobert, 1828) ssp. ex aff. *spelaeus* (Boule, 1906), Untermaßfeld. – 1-2 Mandibel IQW 1994/24691 (Mei. 24220); 1 occlusal, 2 Mandibelast sin. buccal. – 3-5 Mandibelfragment dex. IQW 1980/16573 (Mei. 16094); 3 buccal, 4 lingual, 5 occlusal. – M = ca. 1:1.



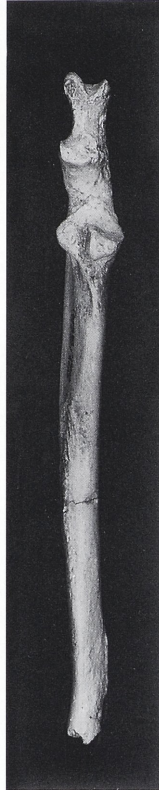
1



2



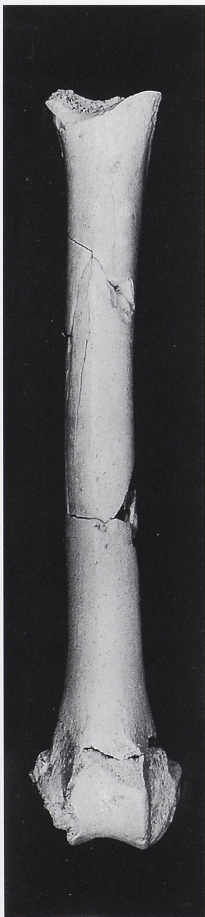
3



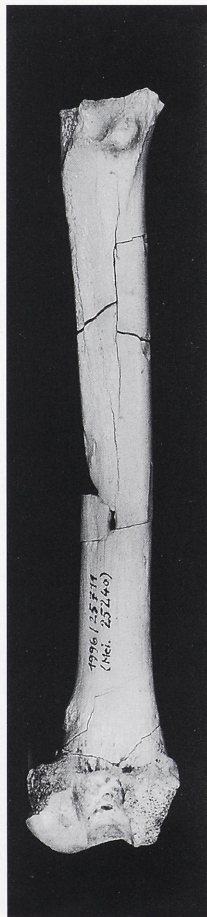
4



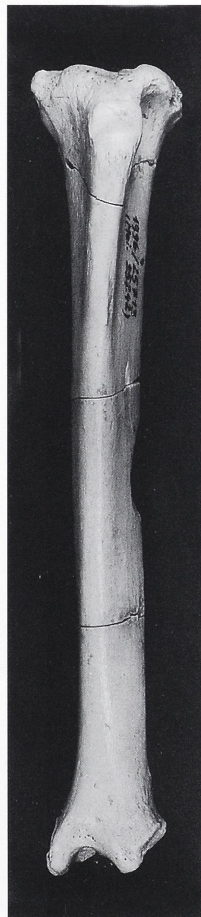
5



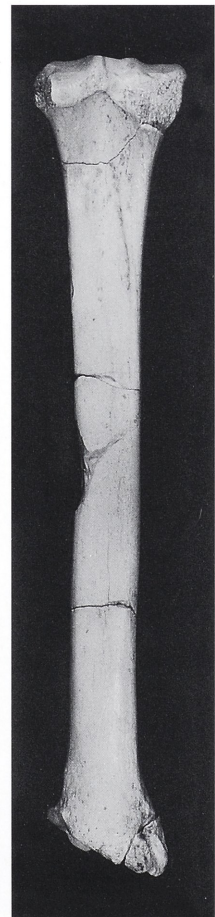
6



7



8

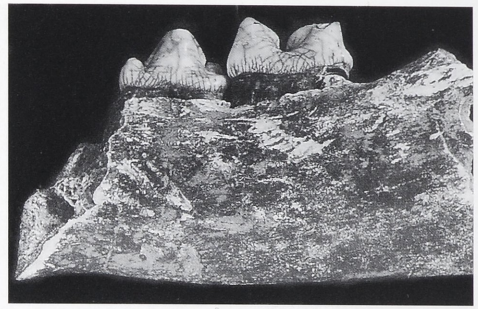


9

*Puma pardoides* (Owen, 1846), Untermaßfeld. – 1-2 Humerusfragment dex. IQW 1996/25719 (Mei. 25248); 1 anterior, 2 posterior. – 3-5 Ulna dex. IQW 1995/25335 (Mei. 24864); 3 extern, 4 anterior, 5 intern. – 6-7 Femur sin. IQW 1996/25711 (Mei. 25240); 6 anterior, 7 posterior. – 8-9 Tibia sin. IQW 1996/25713 (Mei. 25242); 8 anterior, 9 posterior. – M = ca. 1:2.



1



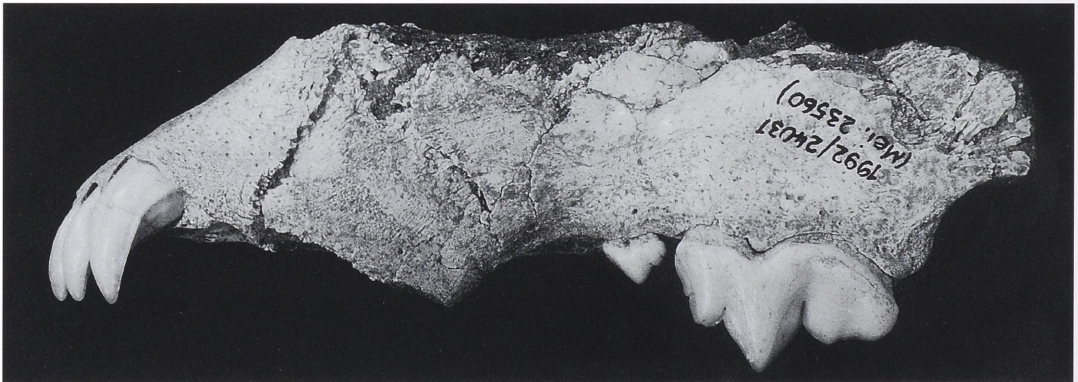
2



3



4



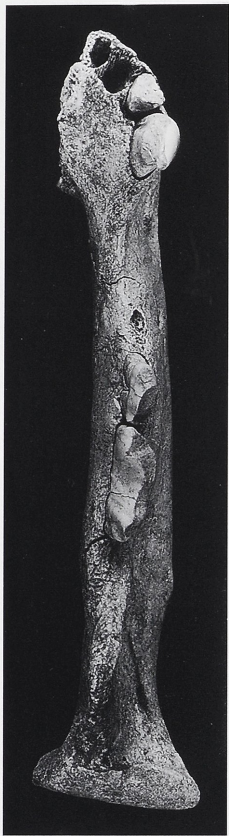
5



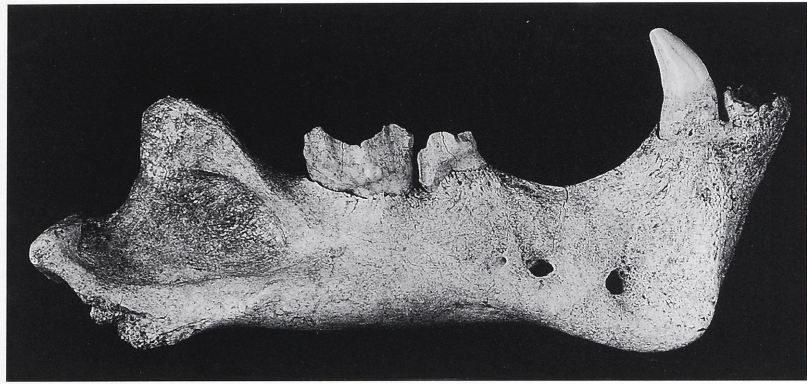
6

*Puma pardoides* (Owen, 1846), Untermaßfeld. – 1-3 Mandibelfragment dex. IQW 1983/18556 (Mei. 18376); 1 buccal, 2 lingual, 3 occlusal.

*Megantereon cultridens adroveri* Pons-Moyá, 1987, Untermaßfeld. – 4-6 Oberkieferfragment sin. IQW 1992/24037 (Mei. 23560); 4 lingual, 5 buccal/Norma lateralis, 6 occlusal/Norma basilaris. – M = ca. 1:1.



3



1



2



6

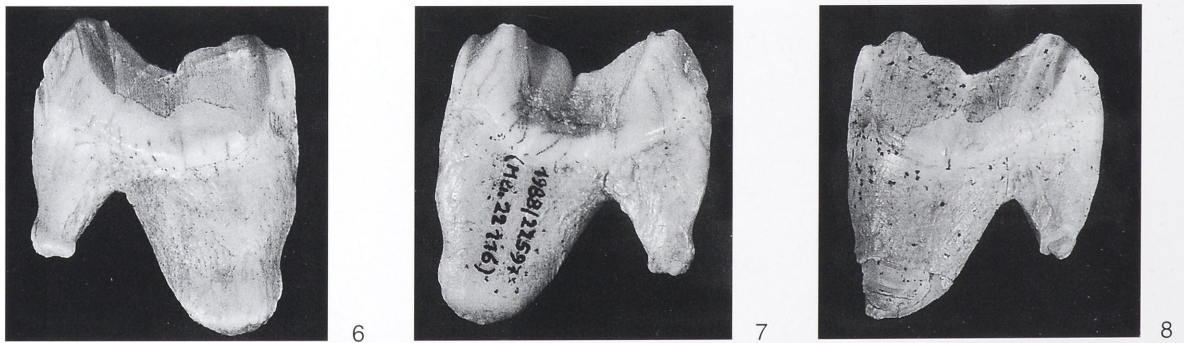


4



5

*Homotherium crenatidens* (Weithofer, 1889), Untermaßfeld. – 1-3 Mandibel dex. IQW 1993/24372 (Mei. 23901); 1 buccal, 2 lingual, 3 occlusal. – 4-6 Mandibel sin. IQW 1997/25986 (Mei. 25514); 4 buccal, 5 lingual, 6 occlusal. – M = ca. 1:2.



*Homotherium crenatidens* (Weithofer, 1889), Untermaßfeld. – 1-2  $C^{max}$  dex. IQW 1984/19977 (Mei. 19497); 1 lingual, 2 buccal. – 3-5  $I^3$  sin. IQW 1993/24370 (Mei. 23899); 3 lateral, 4 lingual, 5 medial. – 6-7  $M_1$  dex. IQW 1988/22597 (Mei. 22116); 6 buccal, 7 lingual. – 8  $M_1$  sin. IQW 1988/22595 (Mei. 22114), buccal. – M = ca. 1:1.



*Castor fiber* Linnaeus, 1758, Untermaßfeld. – 1-3 Mandibula-Fragment dex. mit I<sub>inf</sub>-M<sub>3</sub>, IQW 1980/16191 (Mei. 15702), von dorsal, buccal, lingual. – 4-6 Mandibula-Fragment sin. mit I<sub>inf</sub>-M<sub>3</sub>, IQW 1980/16190 (Mei. 15701), von dorsal, buccal, lingual. – M = ca. 1:1.



*Castor fiber* Linnaeus, 1758, Untermaßfeld. - 1, 8, 9 P<sup>4</sup> sin. IQW 1988/22462 (Mei. 21981), von occlusal, buccal, lingual. - 2, 10, 11 M<sup>1/2</sup> sin. IQW 1999/26580 (Mei. 26109), von occlusal, buccal, lingual. - 3, 12, 13 M<sup>3</sup> dex. IQW 1980/16192 (Mei. 15703), von occlusal, buccal, lingual. - 4, 14, 15 P<sub>4</sub> sin. IQW 1988/22463 (Mei. 21982), von occlusal, buccal, lingual. - 5, 16, 17 M<sup>3</sup> dex. IQW 1999/26581 (Mei. 26110), von occlusal, buccal, lingual.

*Trogontherium cuvieri* Fischer von Waldheim, 1809, Untermaßfeld. - 6, 20, 21 P<sub>4</sub> sin. IQW 1982/18014 (Mei. 17534), von occlusal, buccal, lingual. - 7, 22, 23 M<sup>3</sup> dex. IQW 1985/20359 (Mei. 19879), von occlusal, buccal, lingual.  
*Hystrix* sp., Untermaßfeld. - 18, 19 I<sub>inf</sub> dex. IQW 1984/20221 (Mei 19741), von buccal, lingual. - 1-7 M = ca. 2:1; 8-23 M=1:1.





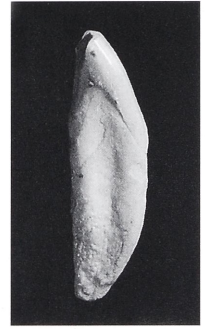
1



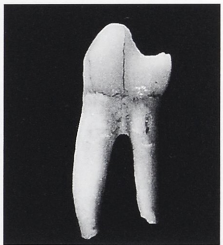
2



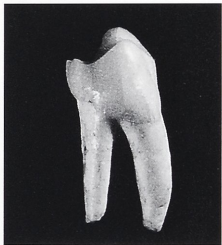
3



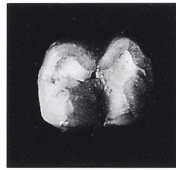
4



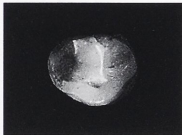
5



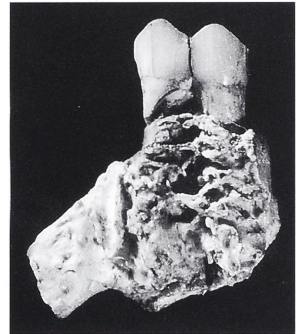
6



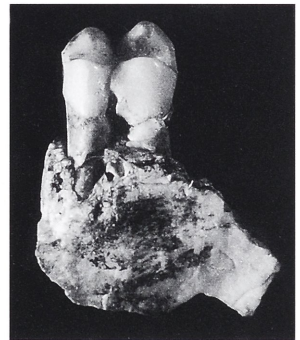
10



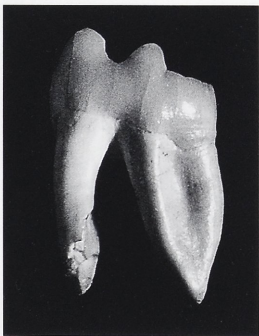
7



8



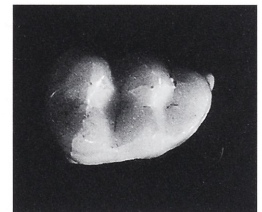
9



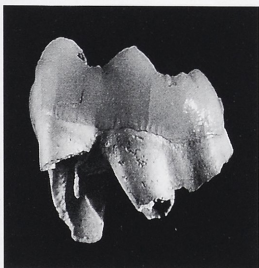
11



12



13



14

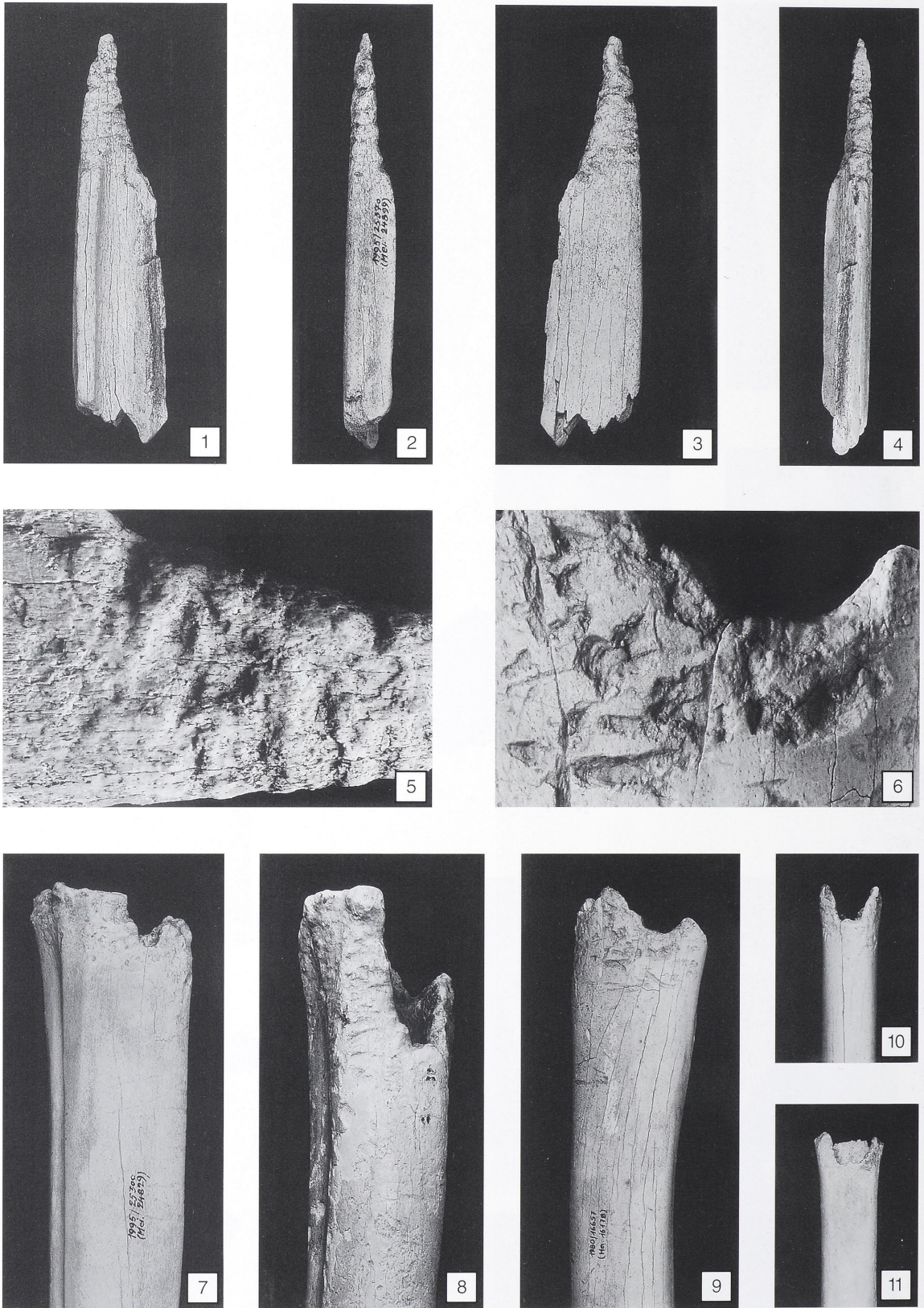


15

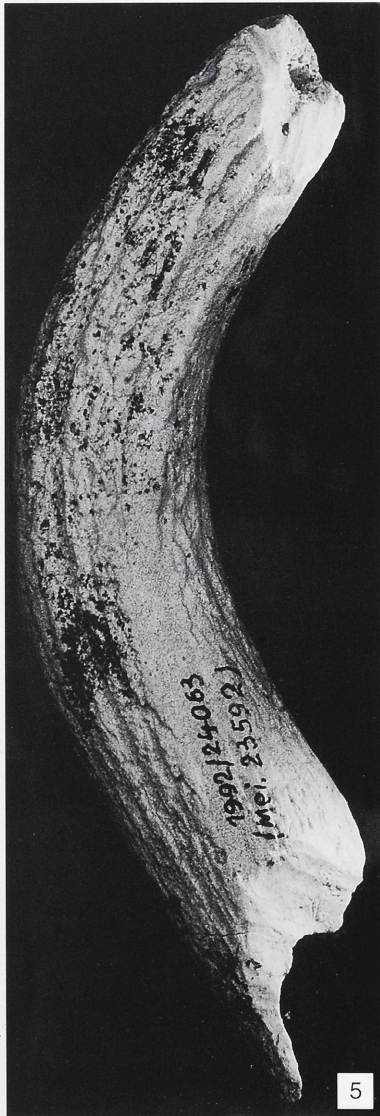
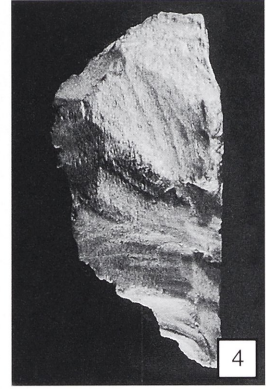
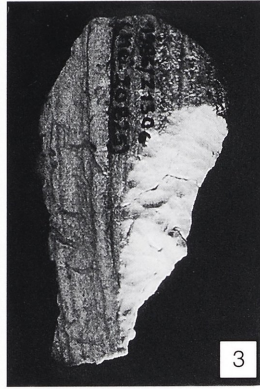
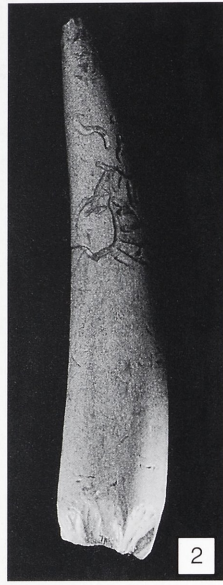
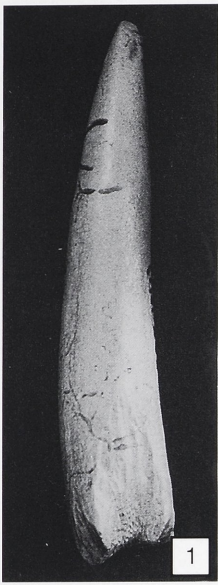


16

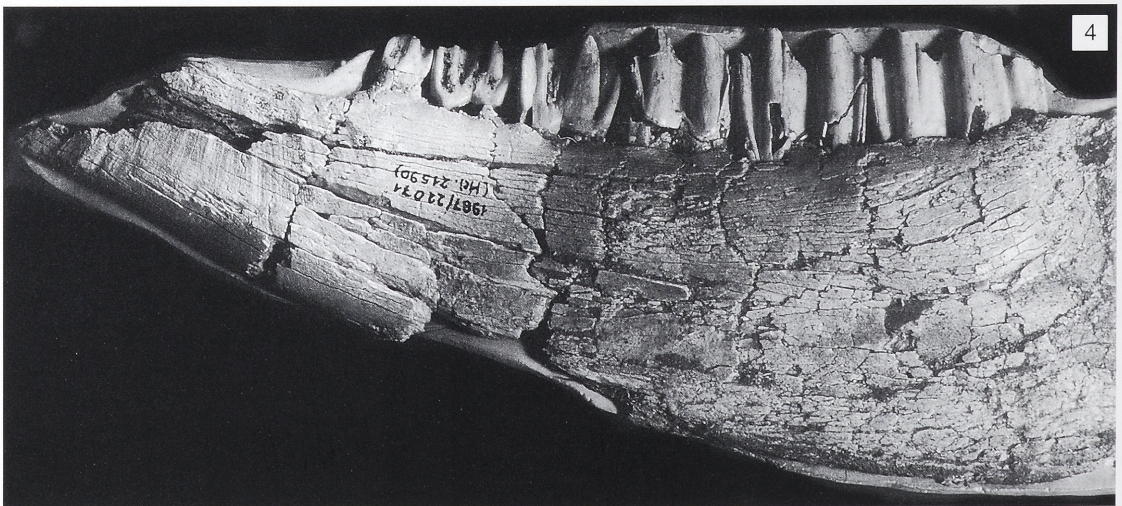
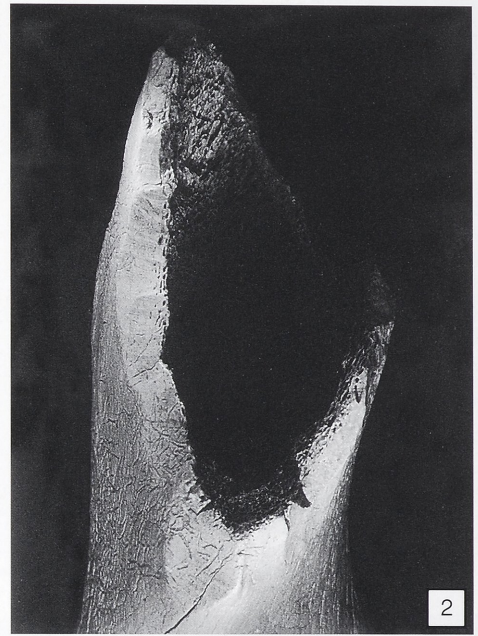
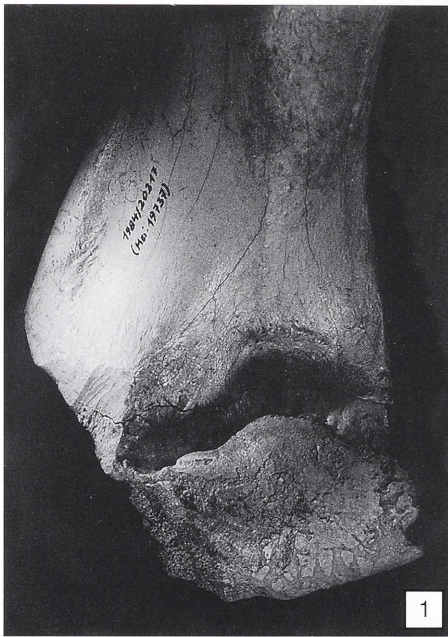
*Macaca sylvanus* Linnaeus ssp. indet., Untermaßfeld. – 1-2 C inf. dex. ♂ IQW 1980/16566 (Mei. 16087)b, von labial, lingual. – 3-4 I<sub>1</sub> dex. ♂ ? IQW 1980/16566 (Mei. 16087)a, von labial, distal. – 5-7 P<sub>4</sub> dex. ♀ IQW 1980/16566 (Mei. 16087)c, von lingual, buccal, occlusal. – 8-10 M<sub>1</sub> dex. ♀ IQW 1980/16566 (Mei. 16087)d, von lingual, buccal, occlusal. – 11-13 M<sub>3</sub> dex. ♀ IQW 1980/16566 (Mei. 16087)e, von lingual, buccal, occlusal. – 14-16 M<sub>3</sub> dex. ♂ IQW 1984/20021 (Mei. 16541), von lingual, buccal, occlusal. – M = ca. 2:1.



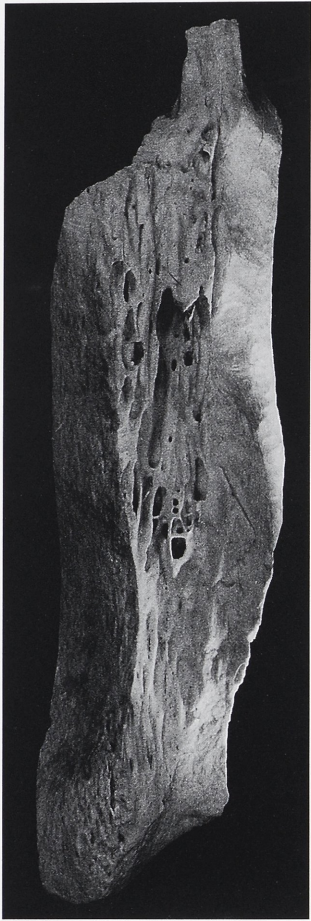
1-4 *Eucladoceros giulii*, Untermaßfeld. Metatarsus dex. (Diaphysenrest) IQW 1995/25370 (Mei. 24899) mit Spitze einer durch Osteophagie geformten Gabel, von medial, caudal, lateral, cranial. – 5 *Eucladoceros giulii*, Untermaßfeld. Metatarsus dex. (Diaphysenrest) IQW 1995/25370 (Mei. 24899) mit Spitze einer durch Osteophagie geformten Gabel, Detailaufnahme, von lateral. – 6 *Eucladoceros giulii*, Untermaßfeld. Radius sin. IQW 1980/16657 (Mei. 16178) mit Fraßspuren von Carnivoren (proximal), Detailaufnahme von cranial. – 7 *Eucladoceros giulii*, Untermaßfeld. Metatarsus sin. IQW 1995/25300 (Mei. 24829) mit Fraßspuren von Carnivoren (proximal), von lateral. – 8 *Bison menneri*, Untermaßfeld. Metatarsus sin. IQW 1995/25379 (Mei. 24908) mit Fraßspuren von Carnivoren (proximal), von lateral. – 9 *Eucladoceros giulii*, Untermaßfeld. Radius sin. IQW 1980/16657 (Mei. 16178) mit Fraßspuren von Carnivoren (proximal), von cranial. – 10 *Cervus s. l. nestii vallonnetensis*, Untermaßfeld. Metacarpus dex. IQW 1995/25058 (Mei. 24587) mit Fraßspuren von Carnivoren (distal), von cranial. – 11 *Cervus s. l. nestii vallonnetensis*, Untermaßfeld. Metacarpus sin. IQW 1995/25303 (Mei. 24832) mit Fraßspuren von Carnivoren (distal), von caudal. – 1-4, 7-11 M = ca. 1:2; 5-6 M = ca. 2:1.



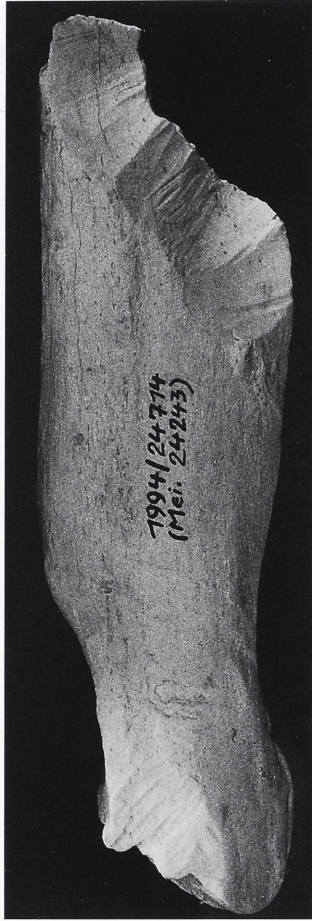
Benagte Geweihfragmente von *Cervus s. l. nestii vallonnetensis* de Lumley, Kahlke, Moigne et Moule, 1988, Untermaßfeld. – 1-2 Distales Fragment IQW 1985/20843 (Mei. 20362). – 3-4 Fragment IQW 1986/21306 (Mei. 20825). – 5 Fragment IQW 1992/24063 (Mei. 23592). – 6 Fragment IQW 1986/21416 (Mei. 20935). – 1, 2, 5, 6 M = ca. 1:1; 3-4 M = ca. 1:2.



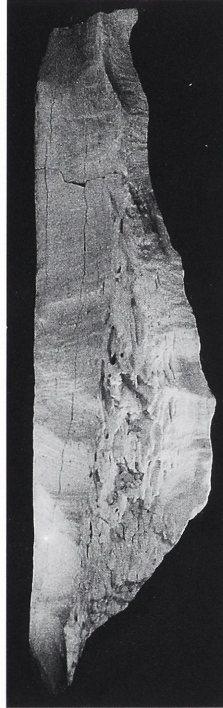
Benagte Knochenfragmente, Untermaßfeld. – 1 *Bison menneri* Sher, 1997, distales Humerusfragment dex. IQW 1984/20217 (Mei. 19737), von dorsal. – 2 *Stephanorhinus etruscus* (Falconer, 1859), distales Humerusfragment sin. IQW 1987/22118 (Mei. 21637), von dorsal. – 3 *Stephanorhinus etruscus* (Falconer, 1859), Pelvisfragment sin. IQW 1987/21961 (Mei. 21480), von medial. – 4 *Bison menneri* Sher, 1997, Mandibelfragment sin. IQW 1987/22071 (Mei. 21590), von buccal. – M = ca. 1:2.



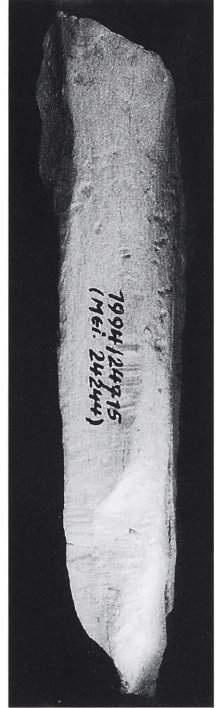
1



2



3



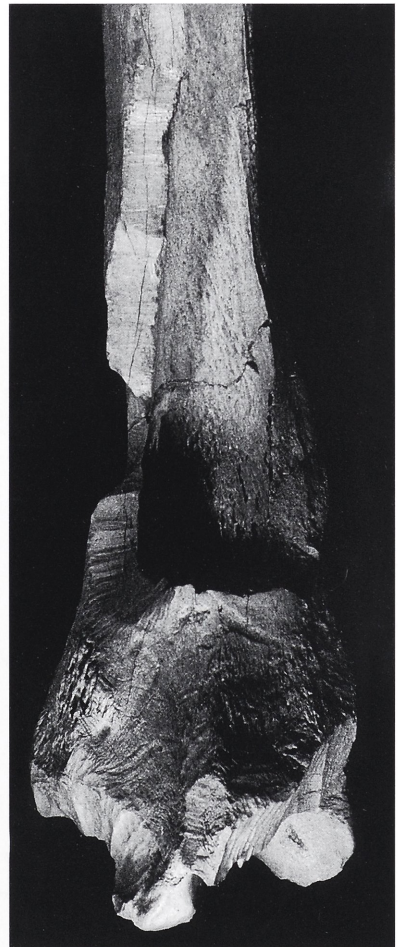
4



5



6



7

Benagte Knochenfragmente von *Bison menneri* Sher, 1997, Untermaßfeld. – 1-2 Tibiafragment IQW 1994/24714 (Mei. 24243), von dorsal. – 3-4 Tibiafragment IQW 1994/24715 (Mei. 24244), von palmar. – 5 Tibiafragment sin. IQW 1985/20356 (Mei. 19876), von dorsal. – 6-7 Tibiafragment dex. IQW 1984/20086 (Mei. 19606), von dorsal. – 1-4 M = ca. 1:1; 5-7 M = ca. 1:2.



1



2



3



4

Benagte Knochenfragmente von *Bison menneri* Sher, 1997, Untermaßfeld. – 1-2 Proximales Metacarpusfragment sin. IQW 1984/20071 (Mei. 19591), von dorsal, palmar. – 3 Proximales Metacarpusfragment dex. IQW 1984/20084 (Mei. 19604), von palmar. – 4 Distales Metacarpusfragment dex. IQW 1984/20084 (Mei. 19604), von palmar. – M = ca. 1:2.