

10. Fototafeln I–XVII



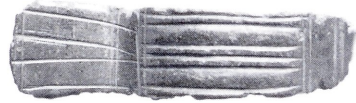
A1



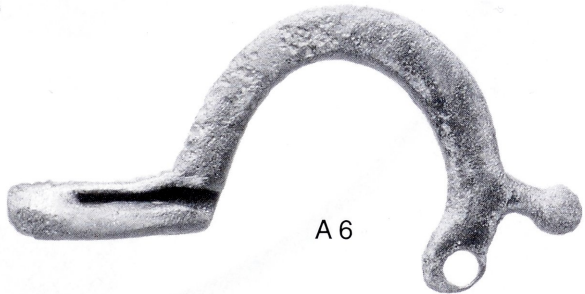
A2



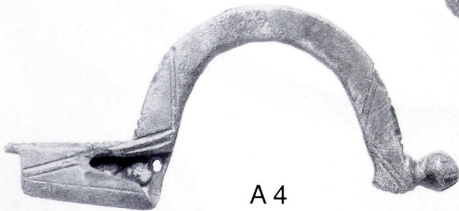
A3



A6



A4



A7



A5



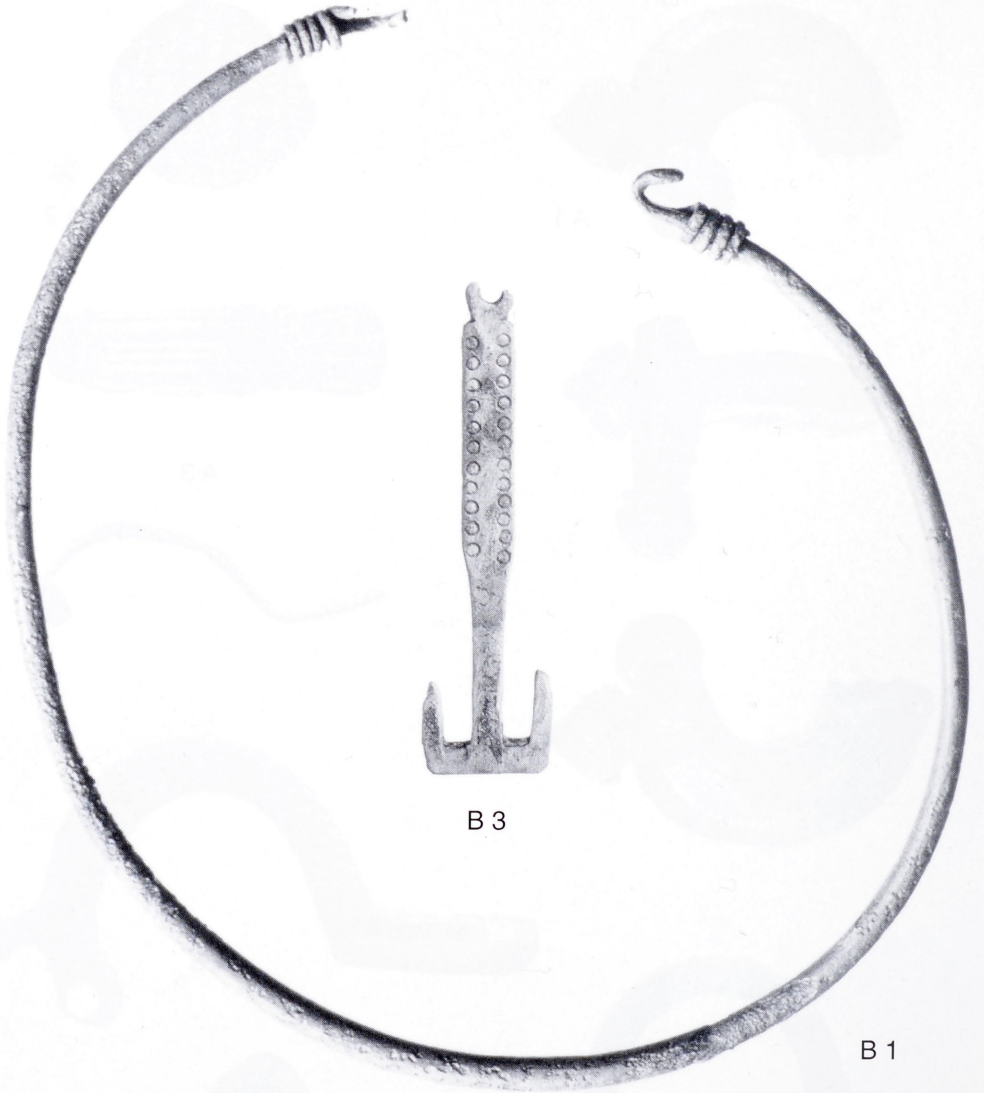
A9



A8

Berghaupten »Geißkopf«. Römische Fibeln (A1–A2) und germanische Fibeln (A3–A9).
Bronze. – M. 1:1.

Fototafel II



B 3

B 1



B 2



B 4

Berghaupten »Geißkopf«. Schmuck. Halsring (B1), Zierschlüssel (B2), Fingerring (B3) und Glasperle (B4). Bronze; B4 Glas. – M. 1:1.

Fototafel III



C 1



C 2



C 3



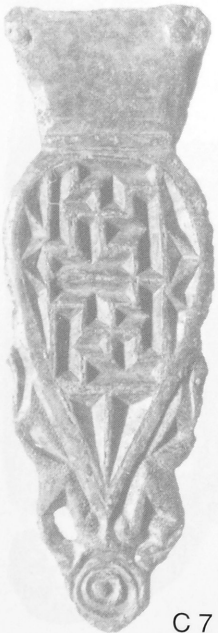
C 4



C 5



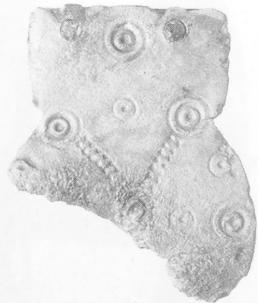
C 6



C 7



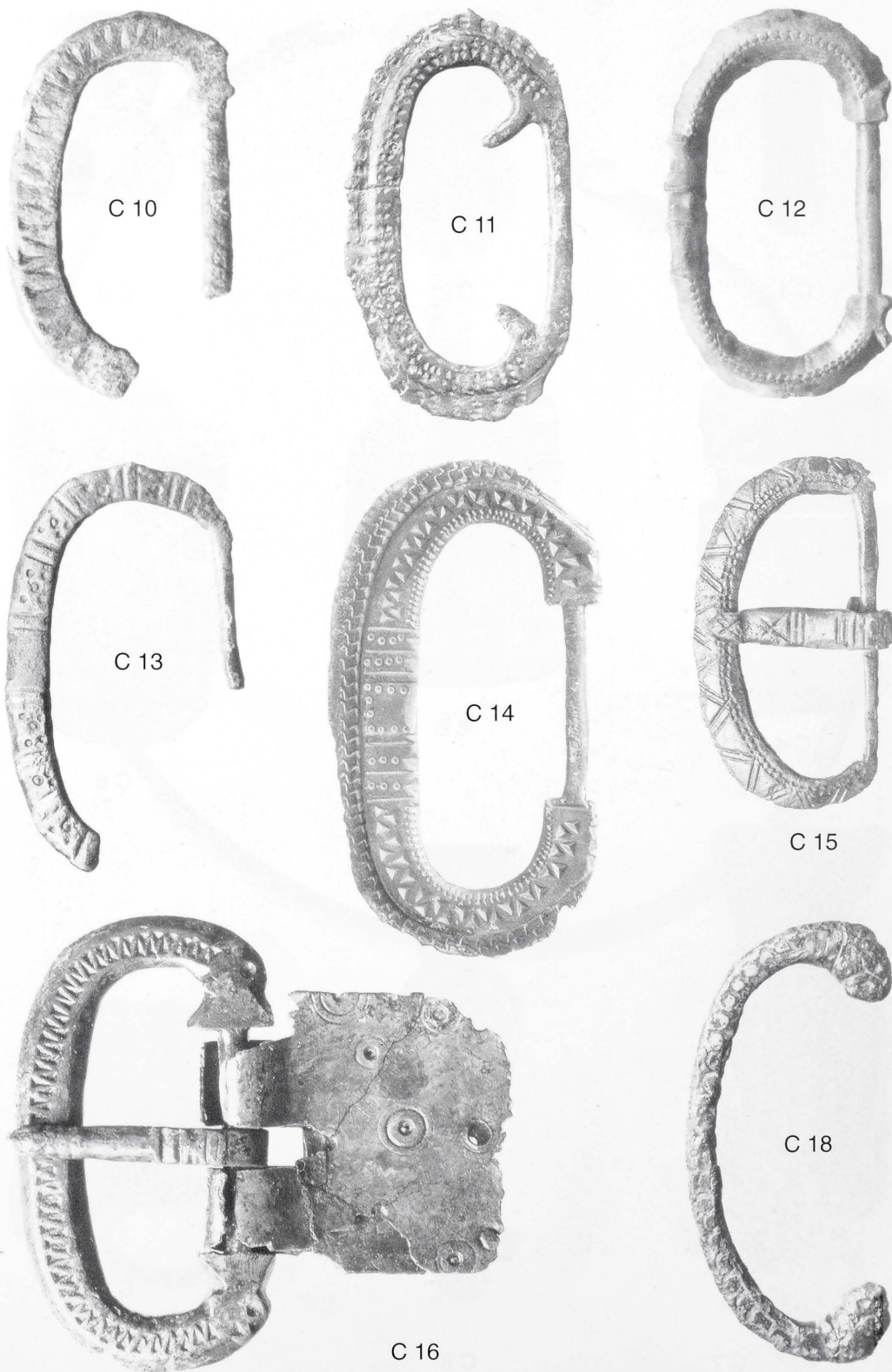
C 8



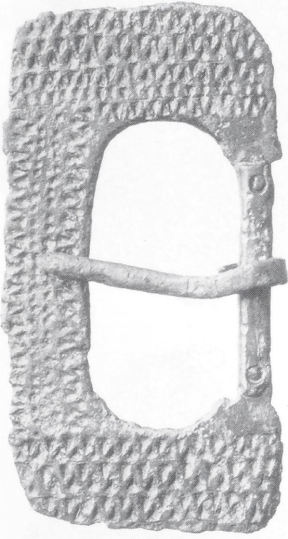
C 9

Berghaupten »Geißkopf«. Riemenzungen (C1–C9). Bronze. – M. 1:1.

Fototafel IV



Berghaupten »Geißkopf«. Gürtelschnallen (C10–C16, C18). Bronze. – M. 1:1.



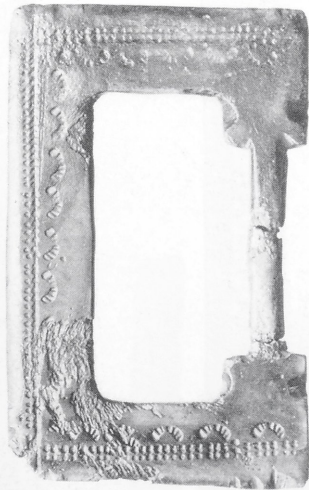
C 26



C 29



C 28



C 27

Fototafel VI



C 30



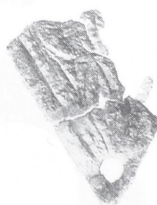
C 31



C 32



C 33



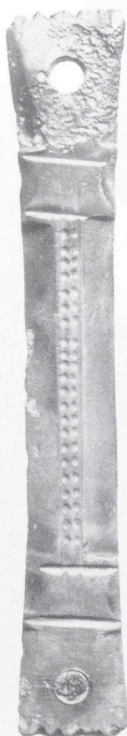
C 34



C 35



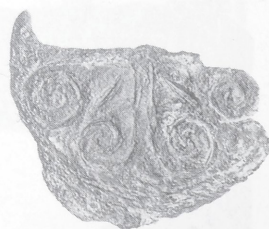
C 37



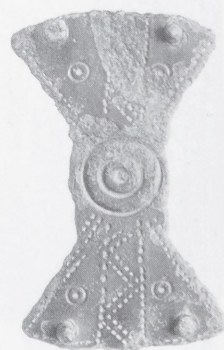
C 38



C 39



C 36



C 40



C 41



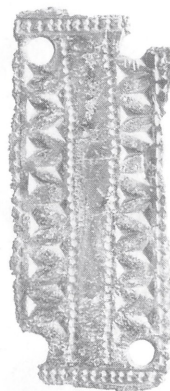
C 42



C 43



C 44



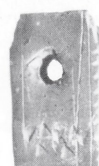
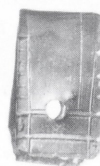
C 45



C 46



C 47



C 48



C 52



C 53



C 54



C 55

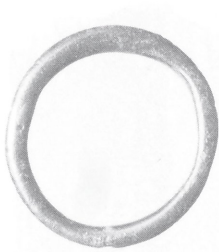


C 56

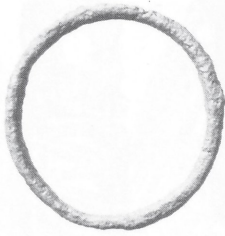


C 57

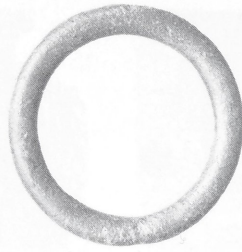
Fototafel VIII



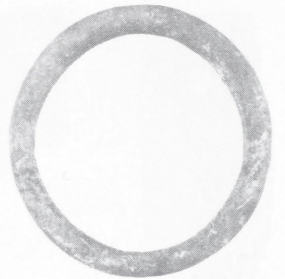
D 1



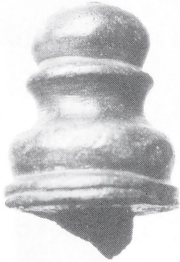
D 2



D 3



D 4



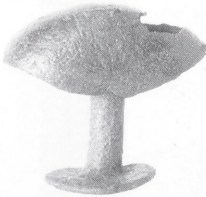
D 5



D 6



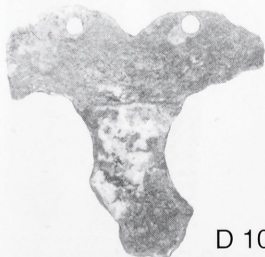
D 7



D 8



D 9



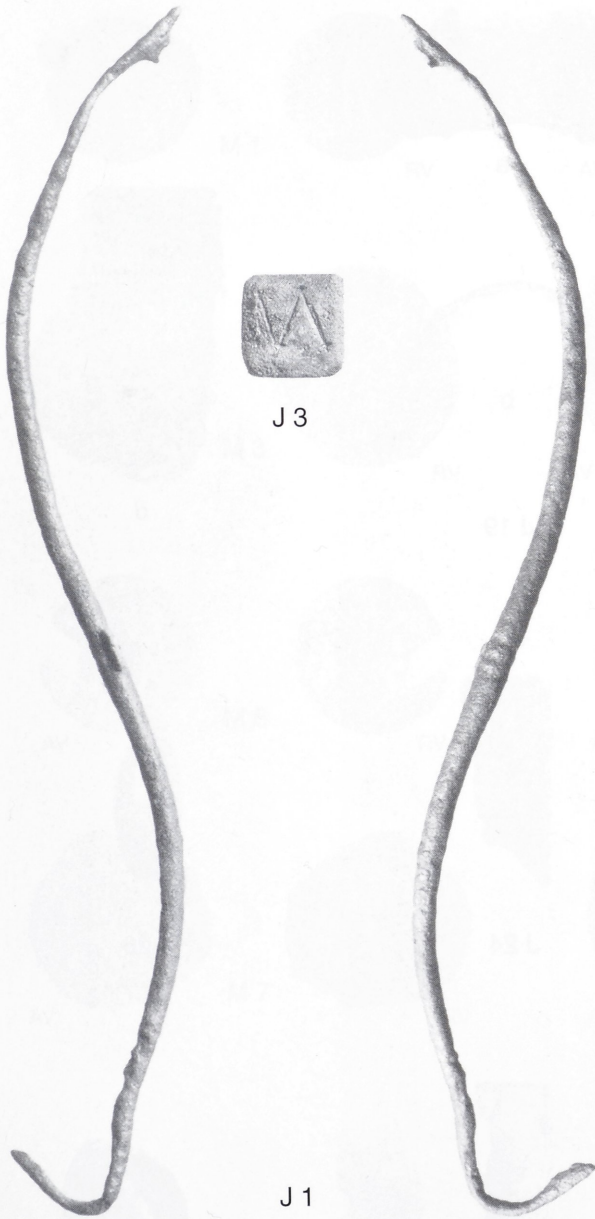
D 10



D 12



Berghaupten »Geißkopf«. Teile vom Pferdezaumzeug und Wagen (D1–D10, D12).
Bronze. – M. 1:1.



J 3

J 1

J 2



J 4



J 13



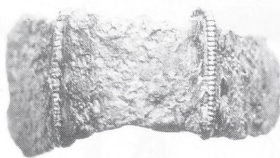
J 15



J 16

Berghaupten »Geißkopf«. Waagenfragmente (J1–J2), byzantinisches Gewicht (J3), Silberbarren (J4) und Bleiobjekte (J13, J15–J16). J1–J3 Bronze; J4 Silber; J13, J 15–J16 Blei. – M. 1:1.

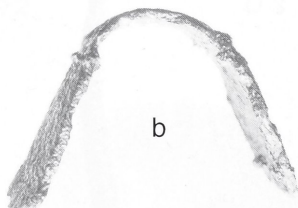
Fototafel X



a

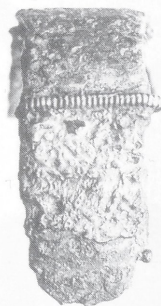


c



b

J 19



d



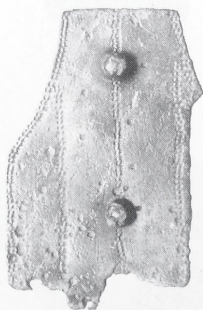
J 23



J 24



J 26



J 28

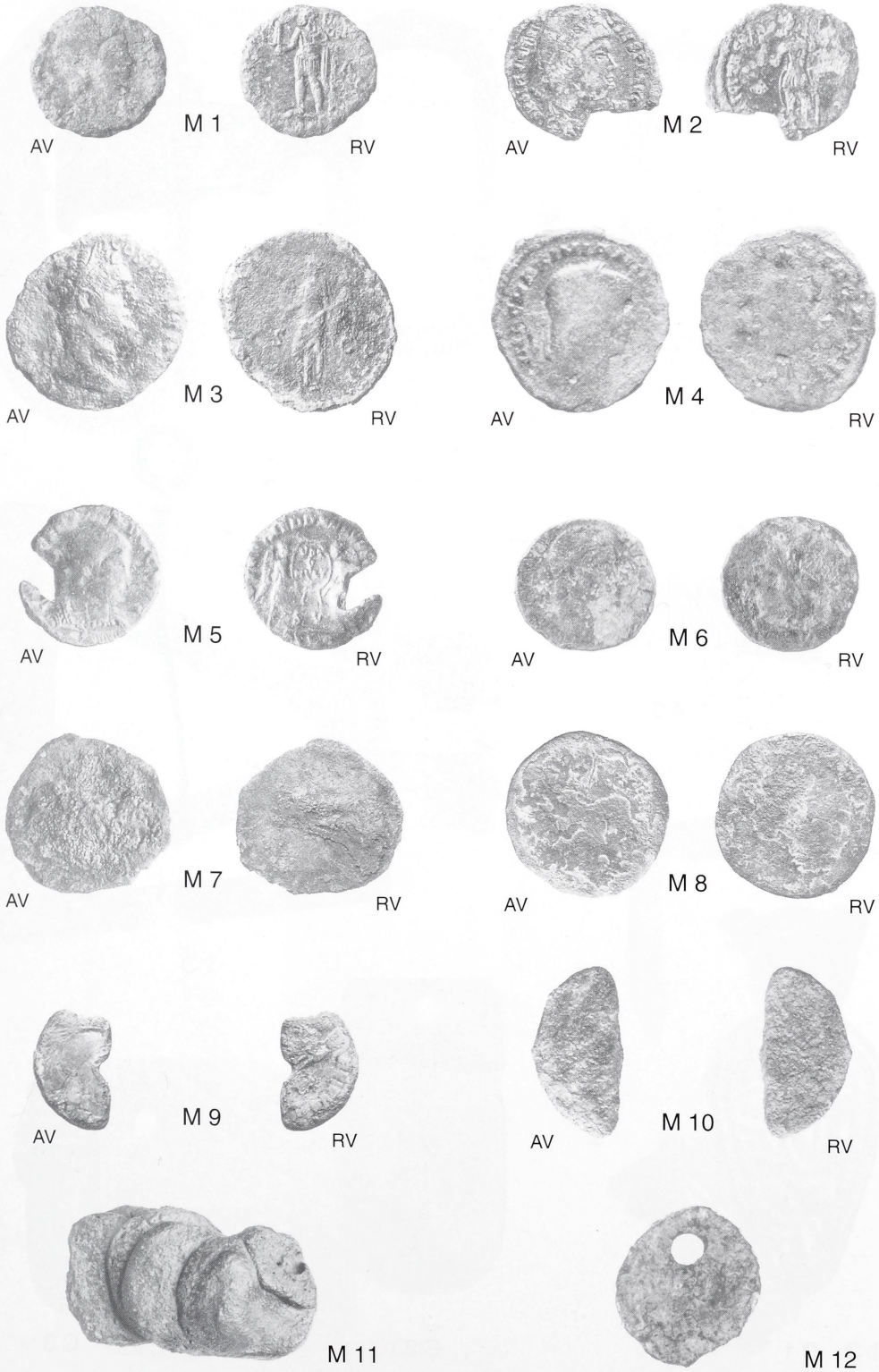


J 29



J 34

Berghaupten »Geißkopf«. Varia (J19, J23–J24, J26, J28–J29, J34). Bronze; J19 Bronze und Silber.
M. 1:1.

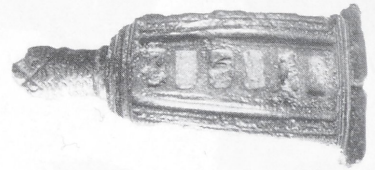


Berghaupten »Geißkopf«. Römische Münzen (M1–M12). Bronze. – M. 1:1.

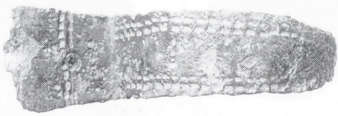
Fototafel XII



A 1



A 2



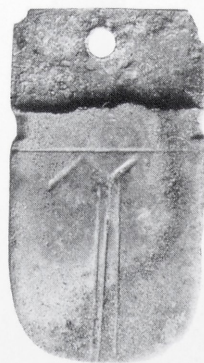
A 3



B 1



C 1

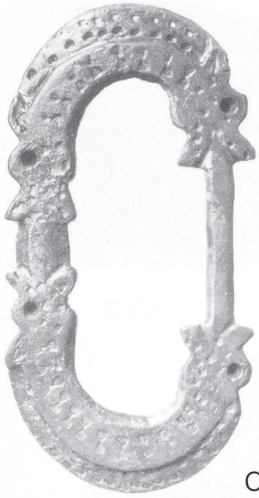


C 2



C 3

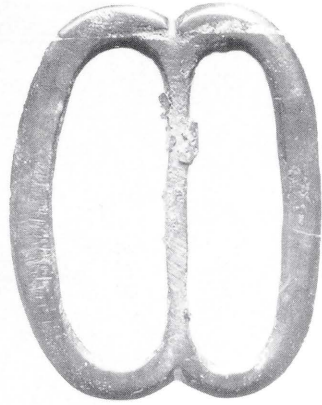
Ortenberg »Kügeloskopf«. Römische Fibeln (A1–A2), germanische Fibel (A3), Bronzenadel (B1) und Riemenzungen (C1–C3). Bronze. – M. 1:1.



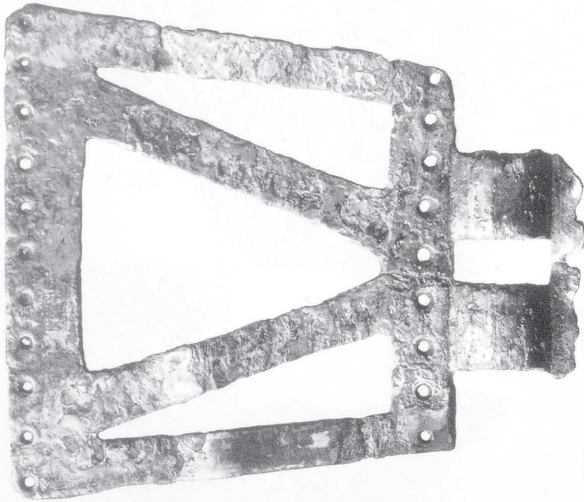
C 4



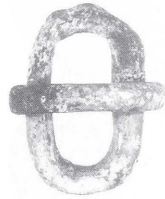
C 5



C 6



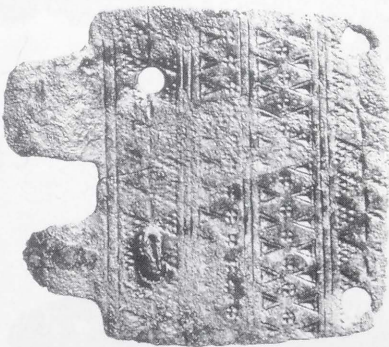
C 7



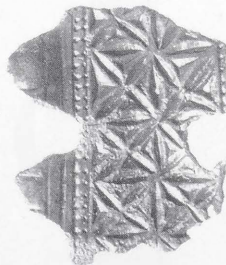
C 8



C 9



C 15



C 16

Ortenberg »Kügeleskopf«. Gürtelschnallen (C4–C9, C15–C16). Bronze; C7 mit Silber plattiert.
M. 1:1.



C 18



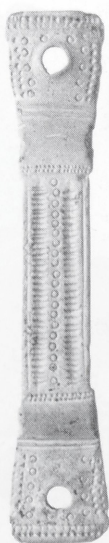
C 19



C 17



C 21



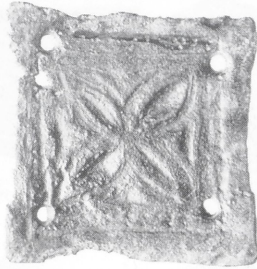
C 20



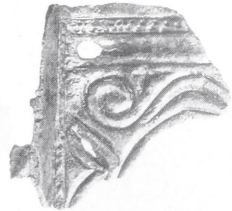
C 22



C 23



C 24



C 25



C 26



C 27



C 28



C 29



C 30



C 31



C 32



C 33



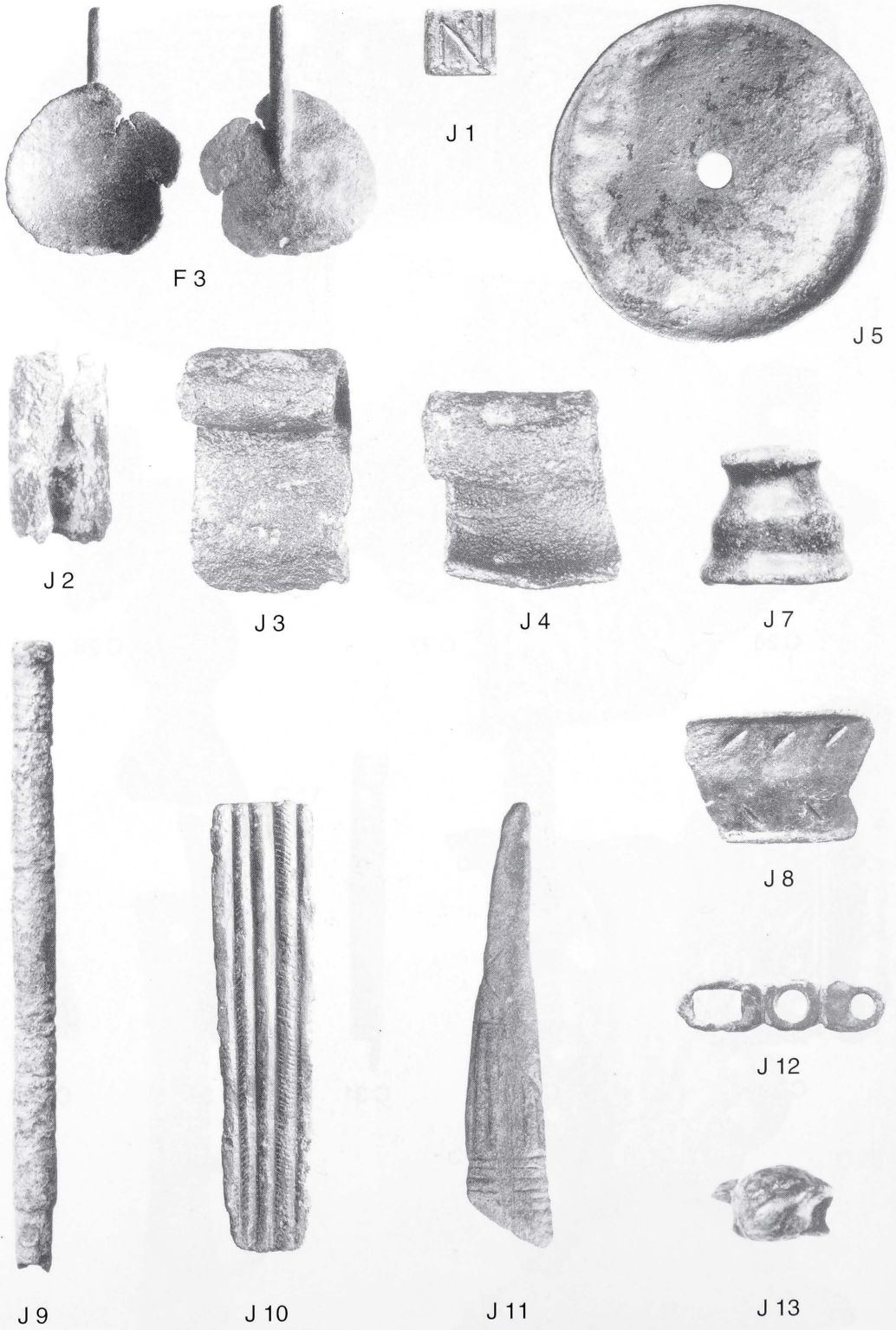
D 1



D 2

Ortenberg »Kügeleskopf«. Gürtelbeschlüge (C23–C33) und Bronzeringe (D1–D2).
Bronze. – M. 1:1.

Fototafel XVI



Ortenberg »Kügeleskopf«. Löffelfragment (F3), byzantinisches Gewicht (J1), Bleigewichte (J2–J4) und Varia (J5–J13). Bronze, J2–J4 Blei. – M. 1:1.

