



Abb.1 Karte der Ägäis



Abb.2 Kreta, Lage der Insel in der Ägäis



Abb.3 Mesara-Ebene



Abb.4 Hügelland bei Palaikastro

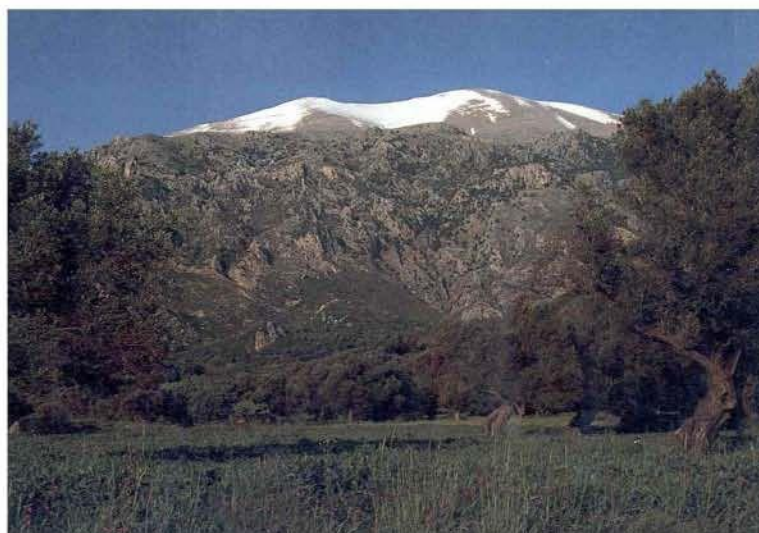


Abb.5 Psiloritis-Gebirge



Abb.6 Kreta, Auswirkungen der Tektonik

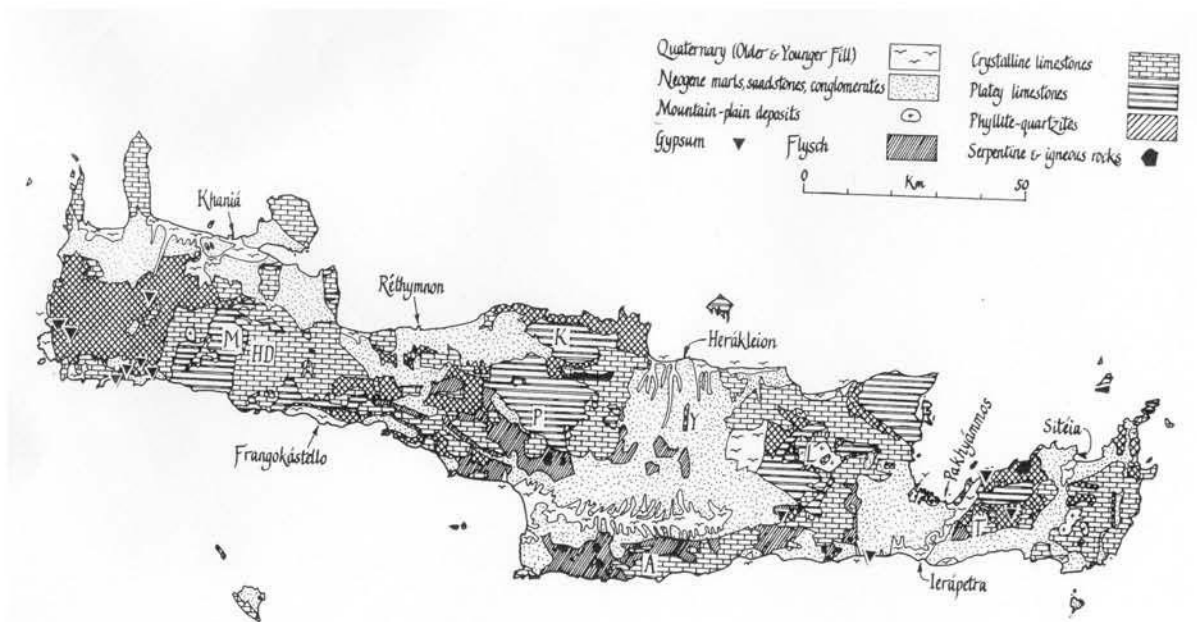


Abb.7 Kreta, Gesteine



Abb.8 Amoutsera, Westkreta

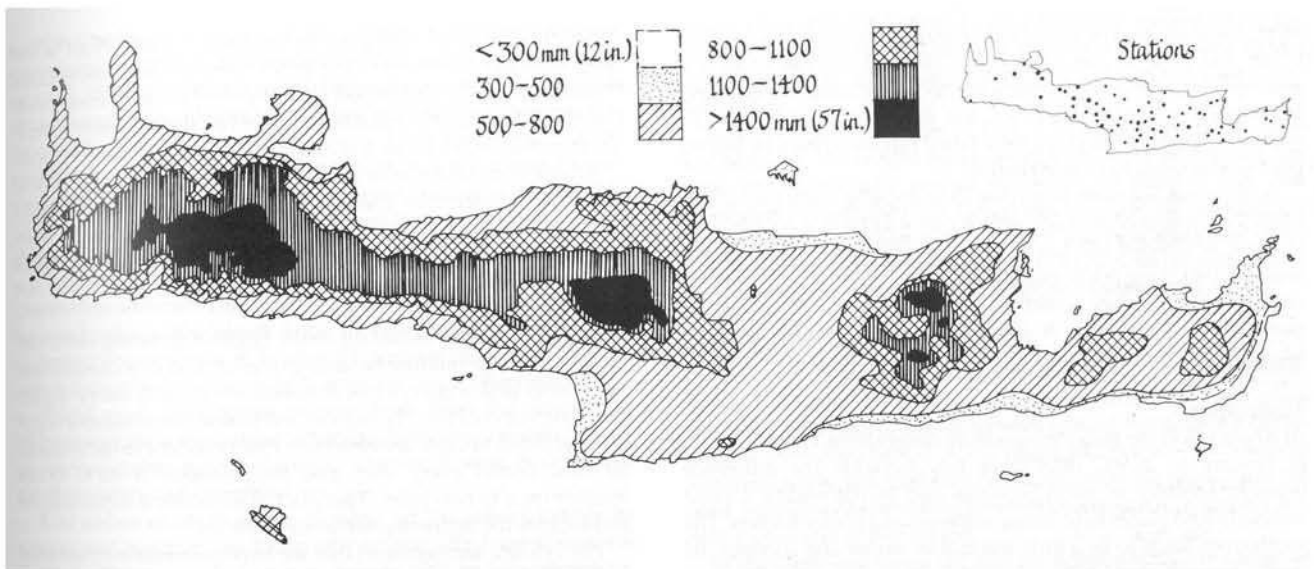


Abb.9 Kreta, Niederschläge



Abb.10 Phrygana



Abb.11 Askyphou-Hochebene



Abb.12 Knossos, sakrale Landschaft



Abb.13 Aptera, röm. Zisterne



Abb.14 Kreta, röm. Aquädukt



Abb.15 Die "Weißen Berge"



Abb.16 Psiloritis-Gebirge



Abb. 17 Aghios Vassilios, Terrassen



Abb.18 Mesara-Ebene



Abb. 19 Steinanker



Abb.20 Knossos, Royal Villa, ledge rimmed cups

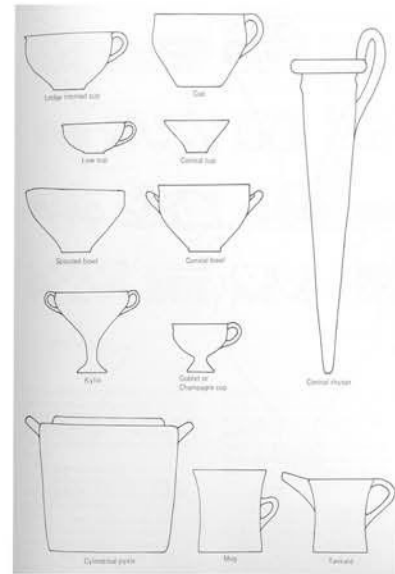


Abb.21 SM III A 1 Keramikformen



Abb.22 Knossos, Palaststil-Gefäß

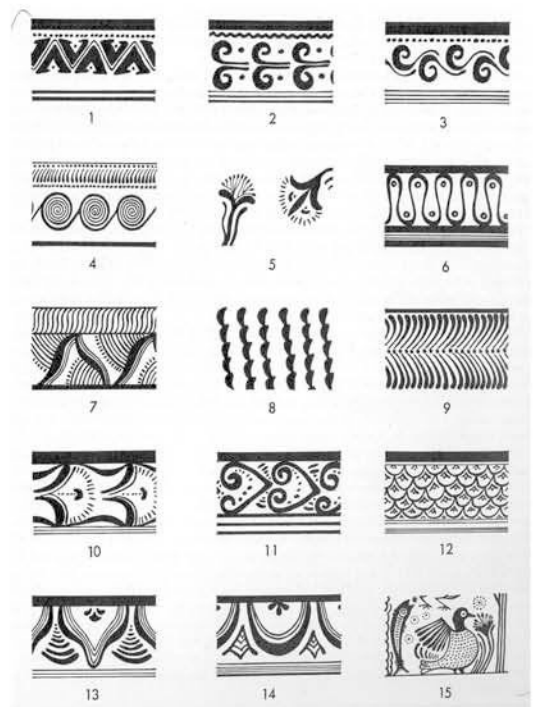


Abb.23 SM III A, Dekorelemente



Abb.24 Gefäß SM III A 1

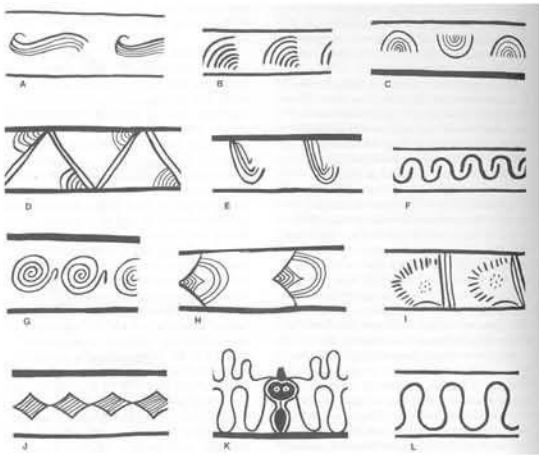


Abb.25 SM III A 2 Dekorelemente



Abb.26 SM III A 2 Fries



Abb.27 SM III B Bügelkanne



Abb.28 SM III B Kylix

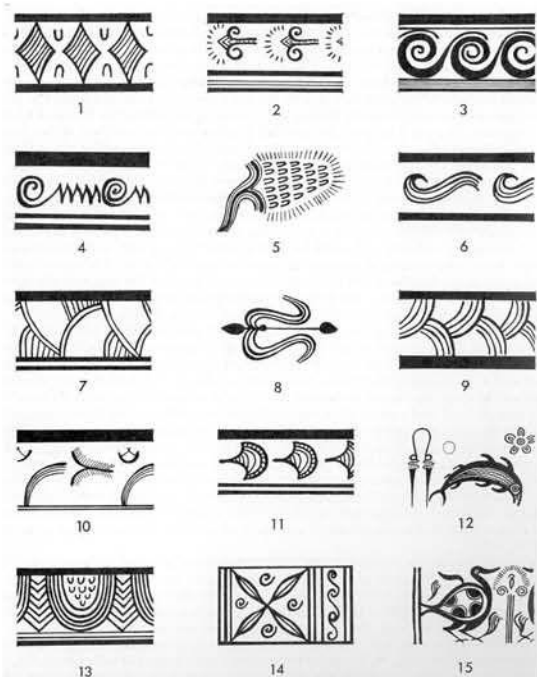


Abb.29 SM III B Dekorelemente

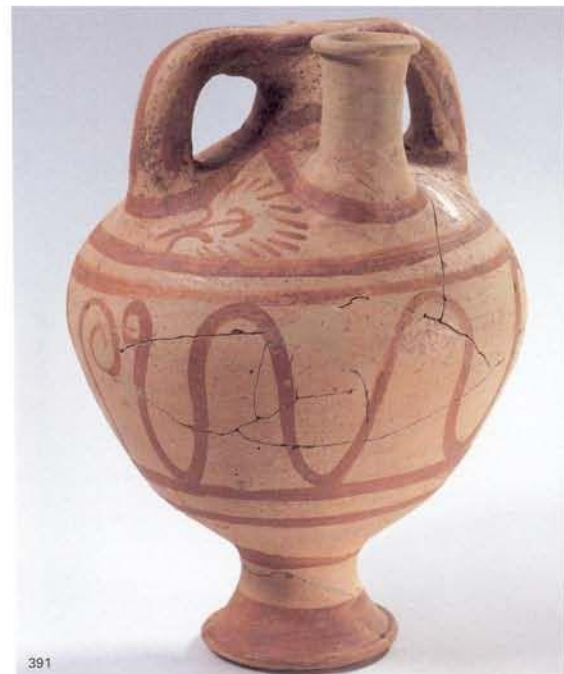


abb.30 SM III B Bügelkanne



Abb.31 SM III C Bügelkanne

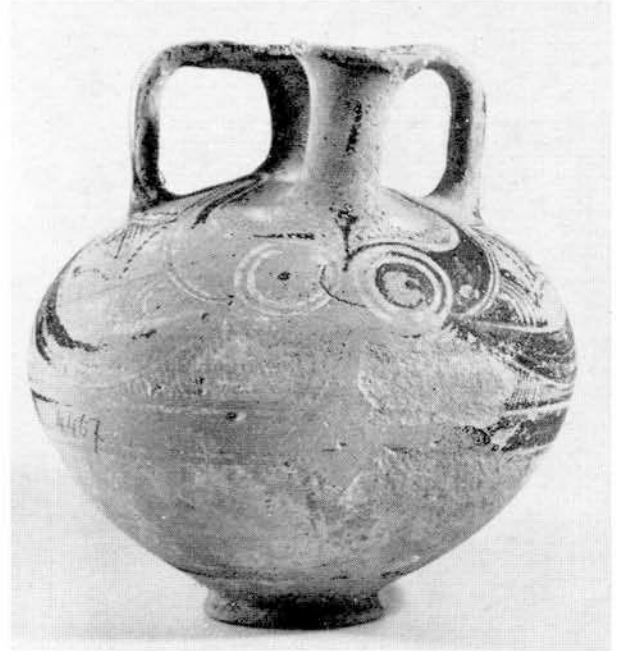


Abb.32 Bügelkanne mit Oktopusmotiv

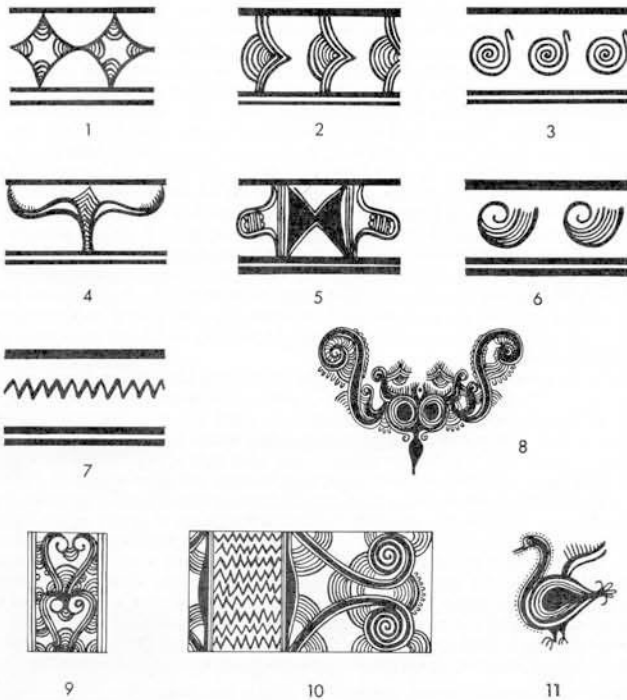


Abb.33 SM III C Dekorelemente



Abb.34 SM III C Keramik mit Anordnung der Motive in Feldern

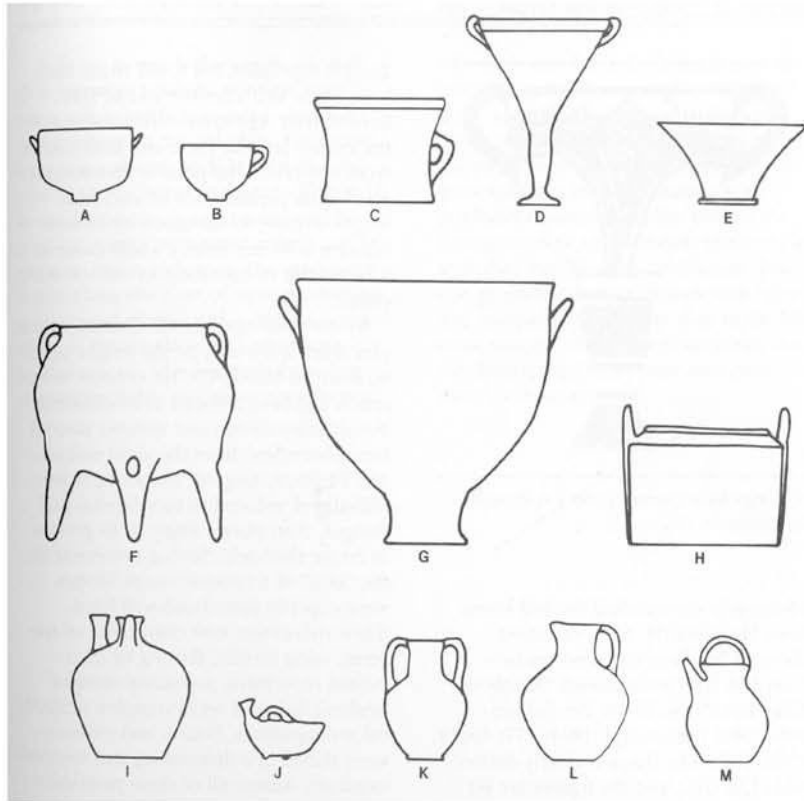


Abb.35 Subminoische Keramikformen

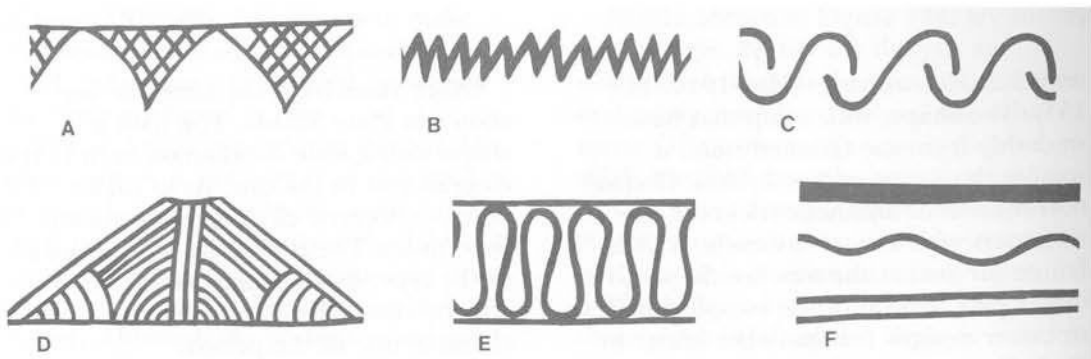


Abb.36 Subminoische Dekorelemente

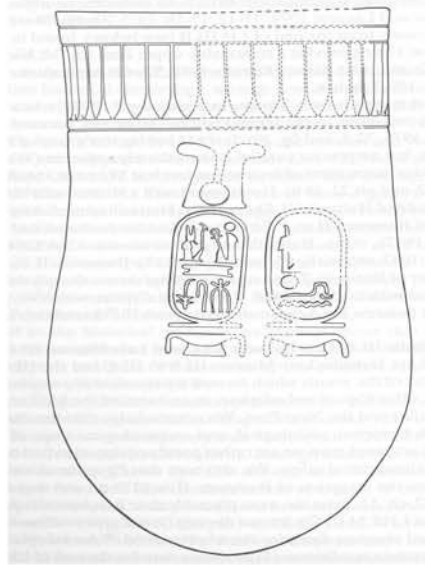


Abb. 37 Alabastergefäß aus Beirut

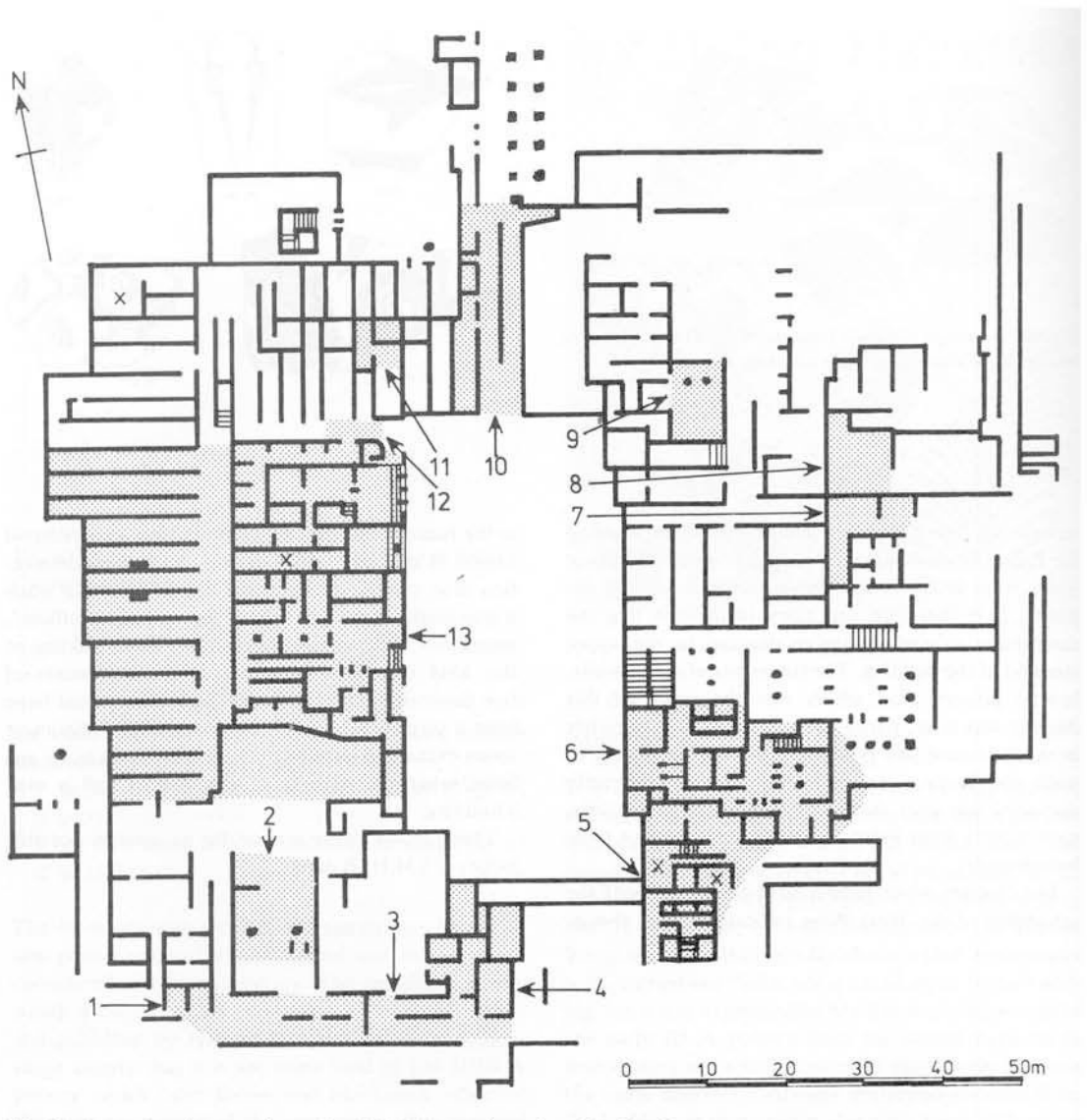


Abb.38 Knossos, Verbreitung SM IIIB Keramik

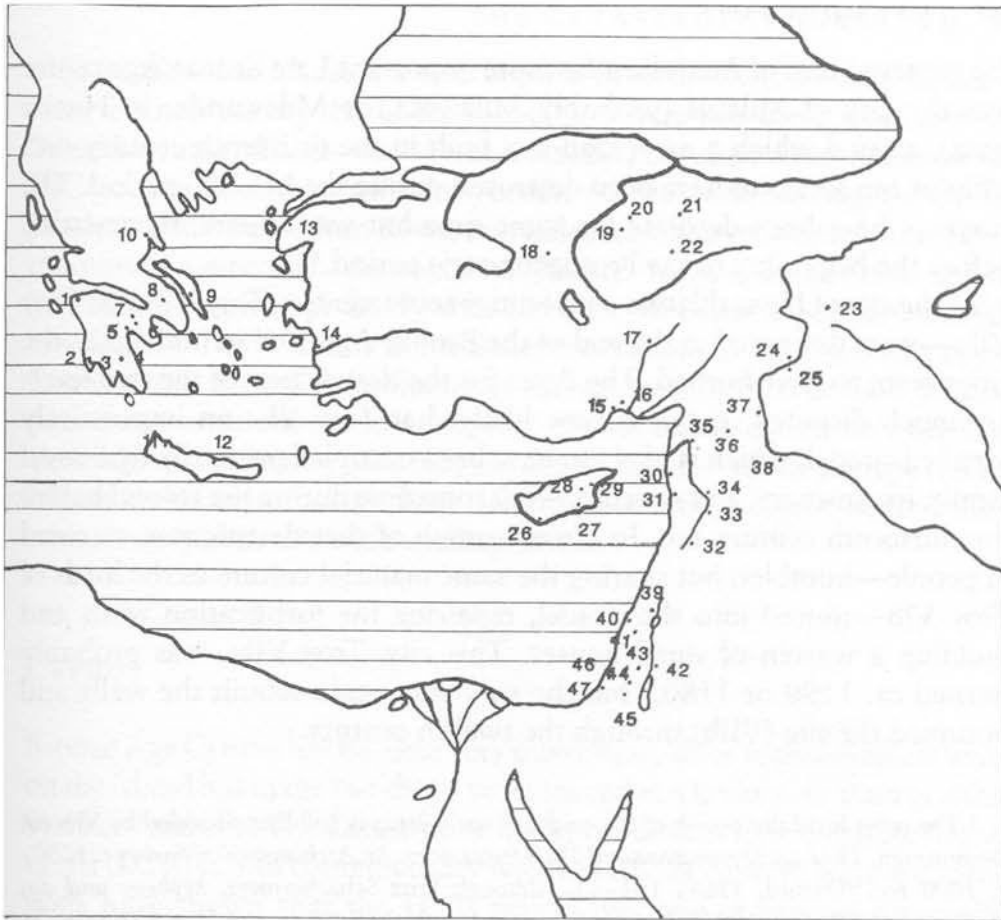


Abb.39 Zerstörungen um 1200 v. Chr.

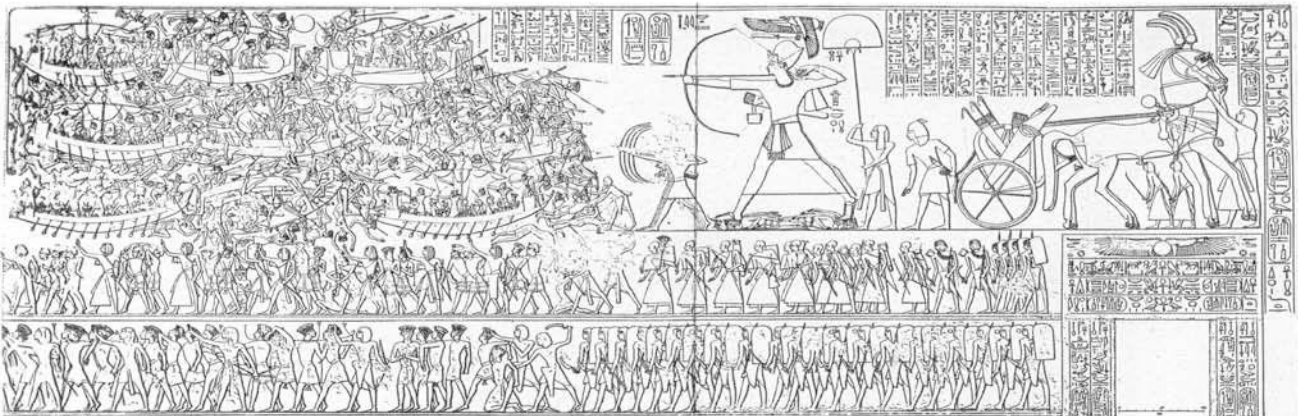


Abb.40 Medinet Habu, Tempel Ramses III., Seevölkerschlacht



Abb.41 Verbreitungskarte der im Text behandelten Höhensiedlungen

- | | | | | | |
|-------------------------------|--------------------------------|-------------------------|-----------------------------|-----------------------|----------------------------|
| 1: Palaikastro Kastri | 11: Koutsounari Karfi | 21: Istron Vrokaastro | 31: Katofygi Erganos Kefali | 41: Gortys | 51: Myrthios Kiriamianou |
| 2: Kalamafki Kypia | 12: Kato Chorio Profitis Elias | 22: Elias To Nisi | 32: Gonies To Flechtron | 42: Kourtes Kephala | 52: Aghios Georgios Kastri |
| 3: Praisos | 13: Monastiraki Chalasmeno | 23: Neapoli Kastri | 33: Krası Siderokephala | 43: Pobia Vigla | |
| 4: Krya Aghios Georgios | 14: Monastiraki Katalimata | 24: Zenia Kastrokephala | 34: Kera Karphi | 44: Axos | |
| 5: Pefki Kastellopoulo | 15: Kavousi Vronda | 25: Adrianos Fortetsa | 35: Milatos Kastellos | 45: Eleftherna | |
| 6: Pefki Mega Chalavros | 16: Kavousi Kastro | 26: Kritsa Kastello | 36: Dreros | 46: Pandanassa Veni | |
| 7: Oreino Kastri | 17: Kavousi Azoria | 27: Tapes Kato Kastello | 37: Kato Chorio Maza | 47: Thronos Kephali | |
| 8: Oreino Epano Ellinika | 18: Chamaizi Liopetro | 28: Mythoi Kastello | 38: Smari Profitis Elias | 48: Orne Kastellos | |
| 9: Oreino Kato Ellinika | 19: Vasiliki Kephala | 29: Loutraki Kandilioro | 39: Afrati Profitis Elias | 49: Frati Kephali | |
| 10: Aghios Ioannis Katalimata | 20: Asari Kephala | 30: Arvi Fortetsa | 40: Prinias Patela | 50: Atsipades Fonises | |

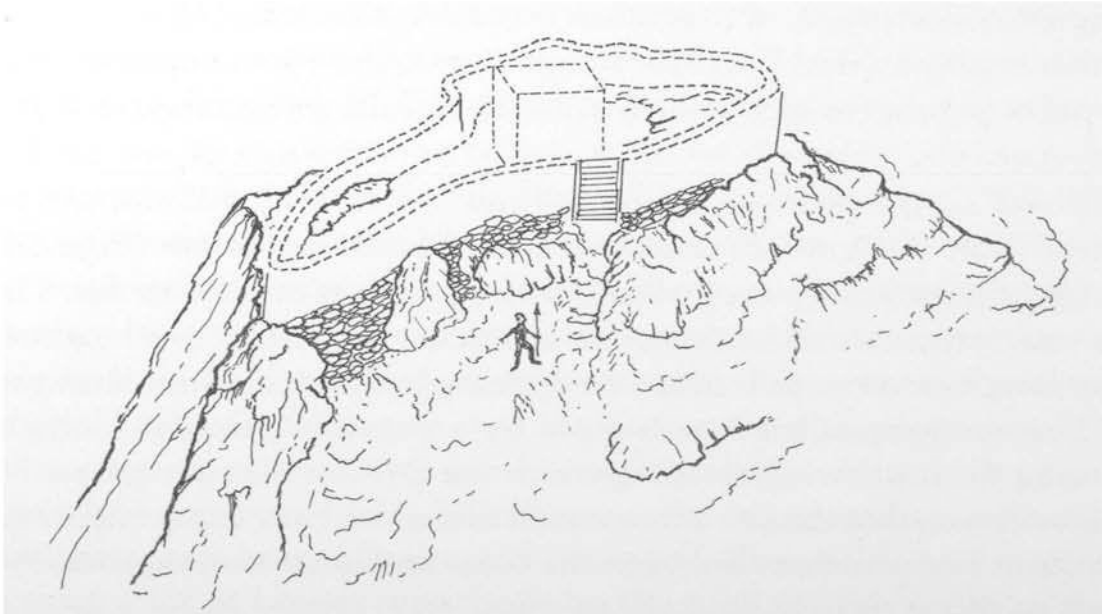


Abb.42 Oreino Kato Ellinika, Rekonstruktion

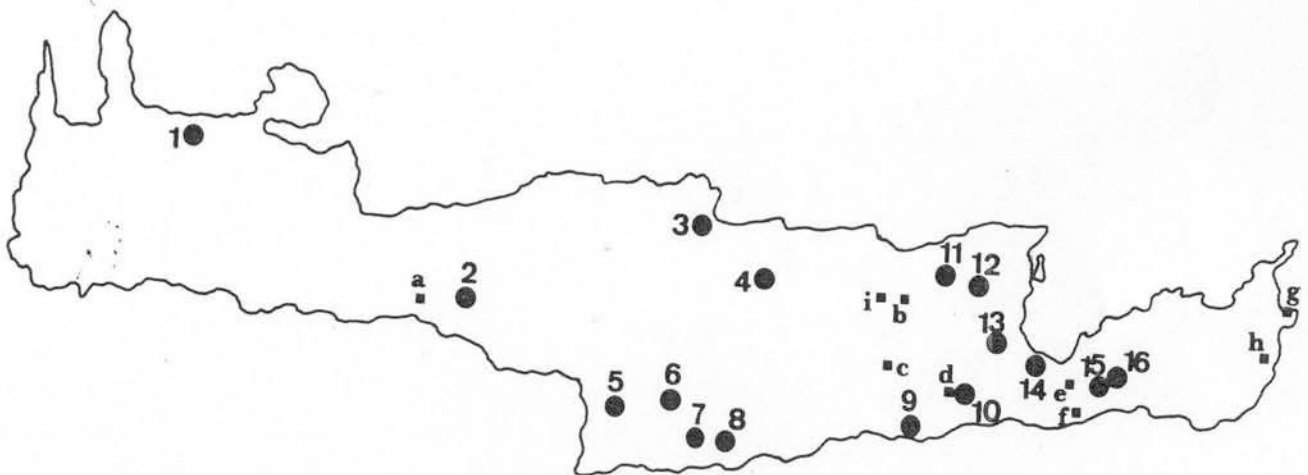


Abb.43 Kreta, Verbreitung befestigter Siedlungen



Abb.44 Ostkreta



Abb.45 Palaikastro Kastri, Ansicht



Abb.46 Palaikastro Kastri, Hausreste

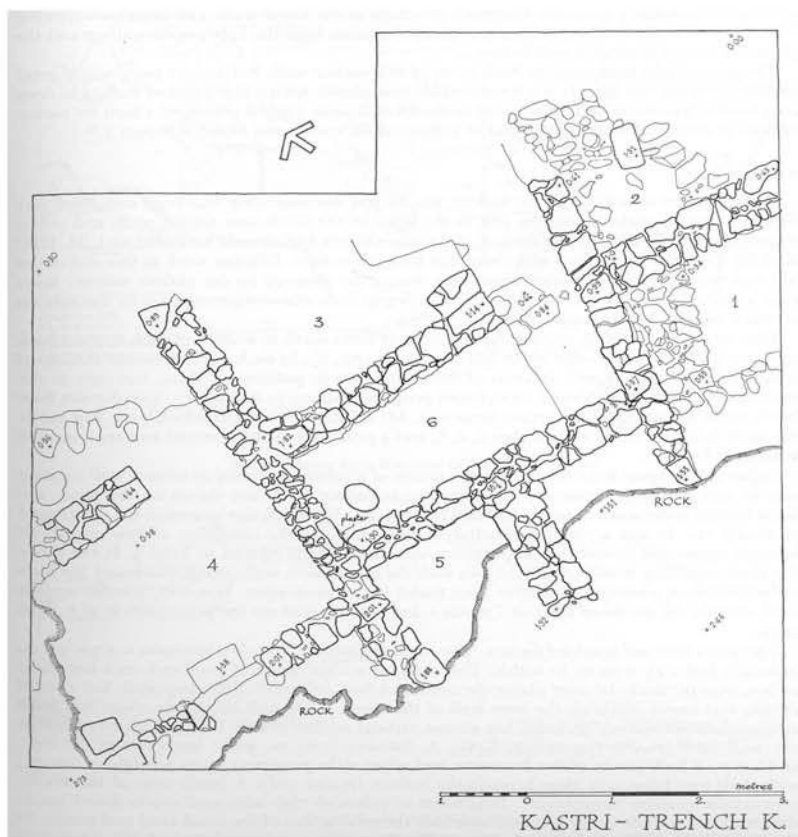


Abb.47 Palaikastro Kastro, Haus K, Plan



Abb.48 Kalamafki Kypia, Ansicht

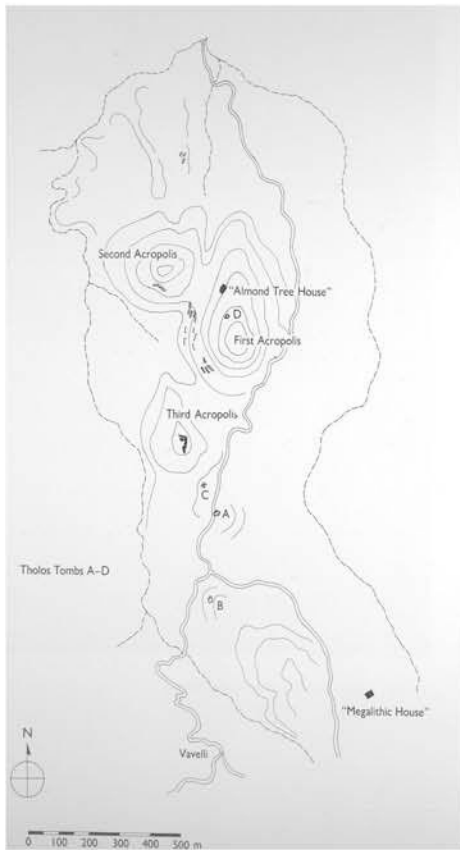


Abb.49 Praisos, Lageplan

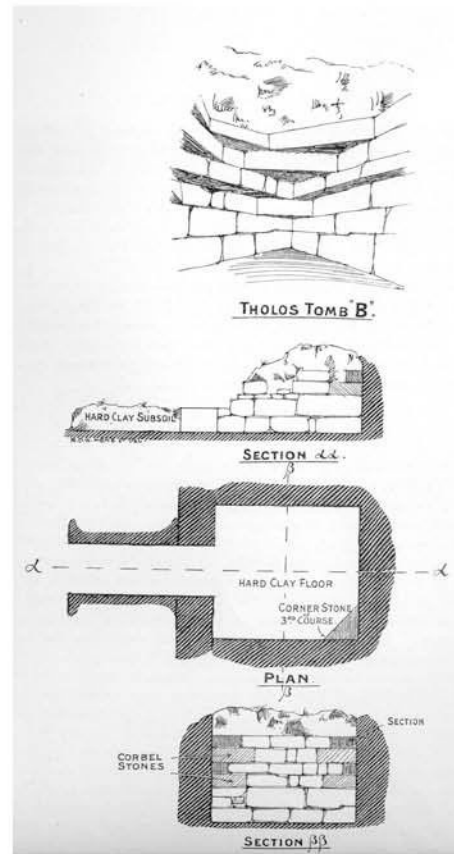


Abb.50 Praisos, Grab B

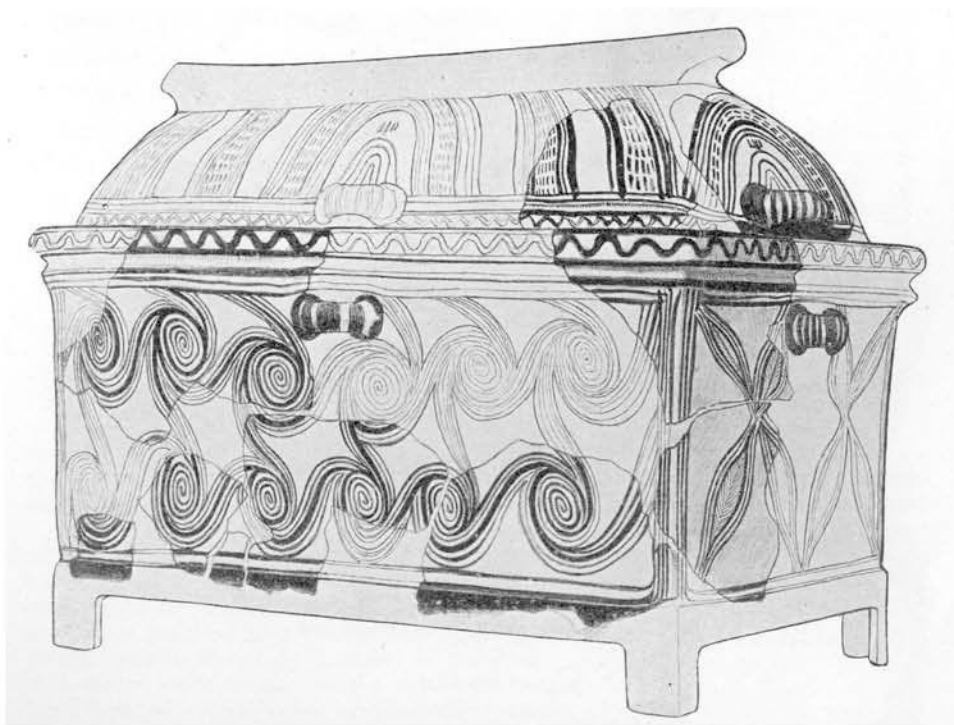


Abb.51 Praisos, Grab B, Larnax



Abb.52 Krya Aghios Georgios, Ansicht



Abb.53 Pefki Kastellopoulo, Plan



Abb.54 Pefki Mega Chalavros



Abb.55 Oreino Kastri, Ansicht

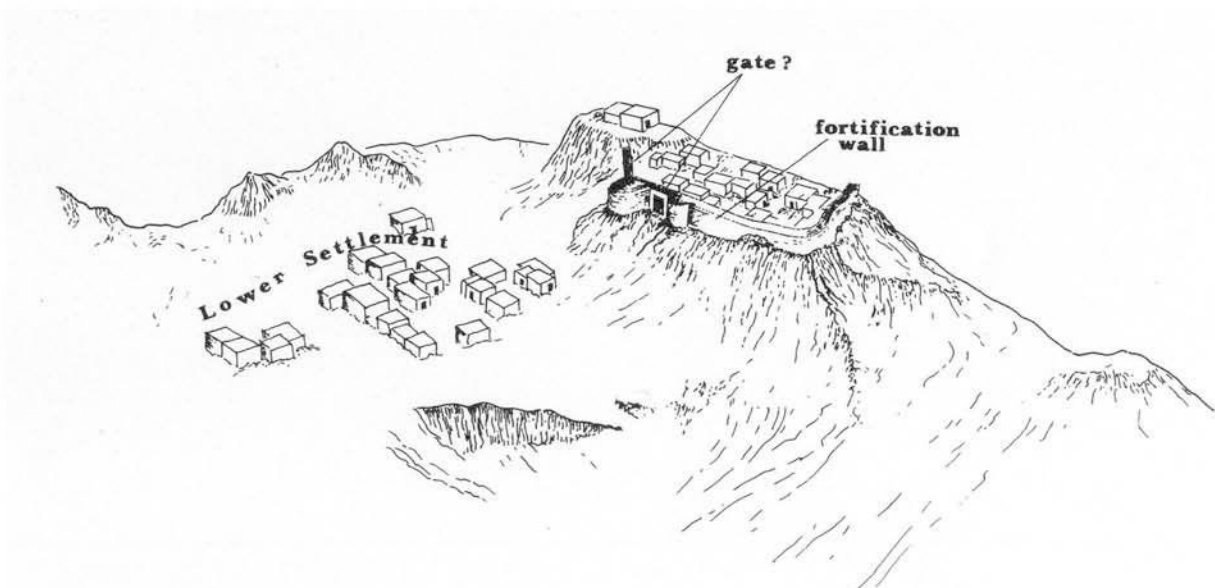


Abb.56 Oreino Kastri, Rekonstruktion



Abb.57 Oreino Kastro, Befestigungswall



Abb.58 Oreino Epano Ellinika, Plan



Abb.59 Aghios Ioannis Katalimata, Ansicht



Abb.60 Koutsounari Karfi, Ansicht



Abb.61 Kato Chorio Profitis Elias, Ansicht

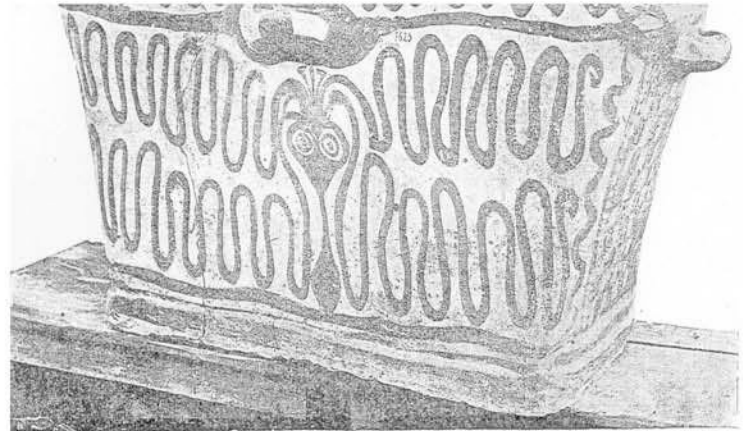


Abb.62 Kato Chorio Profitis Elias, Larnax

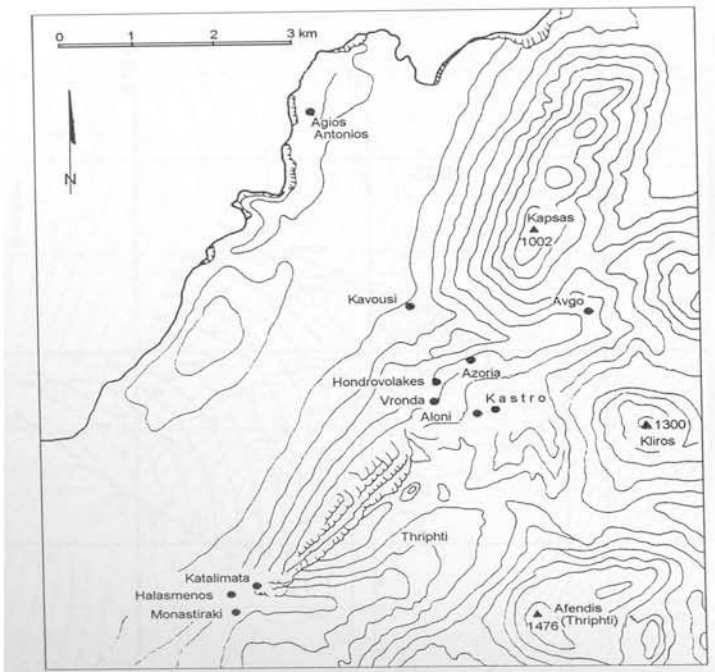


Abb.63 Monastiraki Chalasmeno, Lage



Abb.64 Monastiraki Chalasmeno, Plan

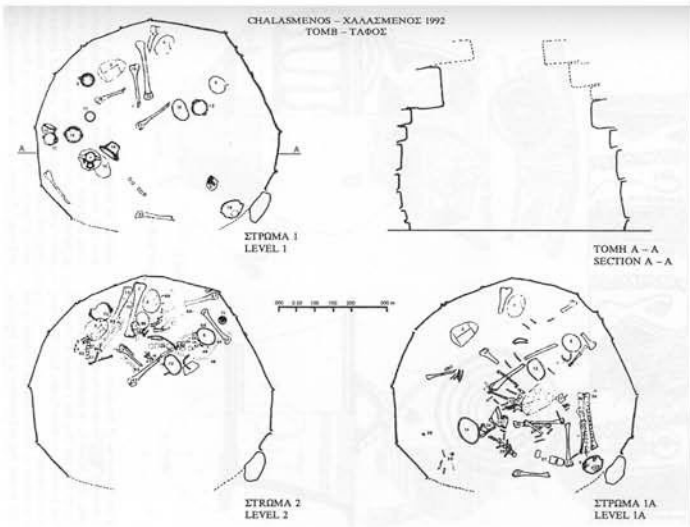


Abb.65 Monastiraki Chalasmeno, Gräber

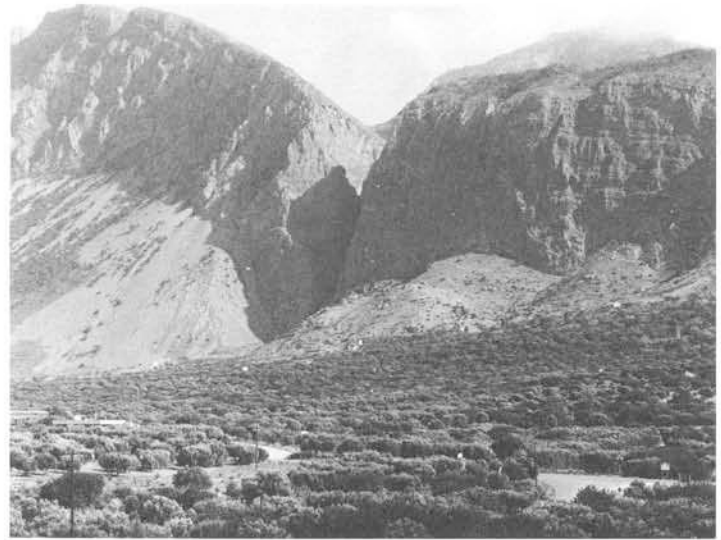


Abb.66 Monastiraki Katalimata, Ansicht



Abb.67 Monastiraki Katalimata, Lage

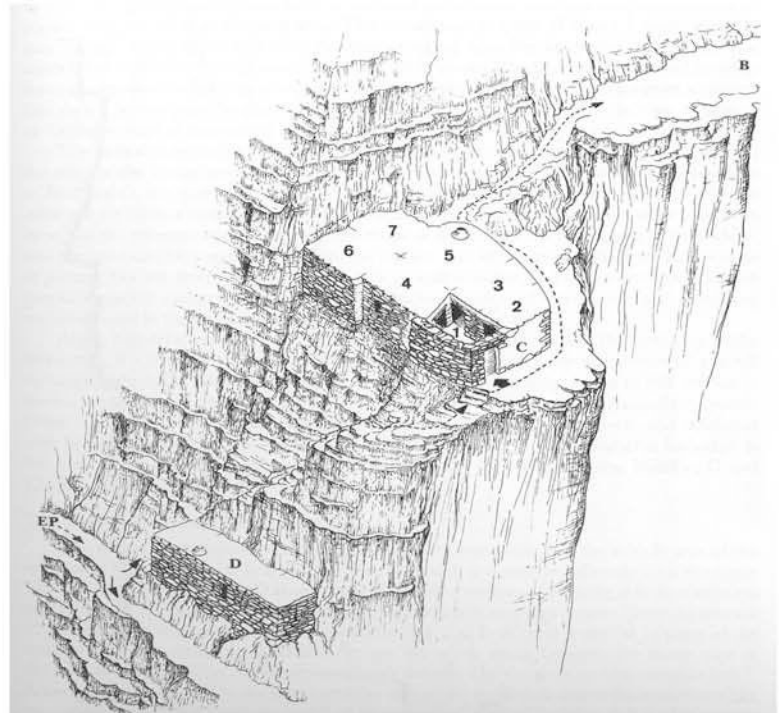


Abb.68 Monastiraki Katalimata, Rekonstruktion Haus C

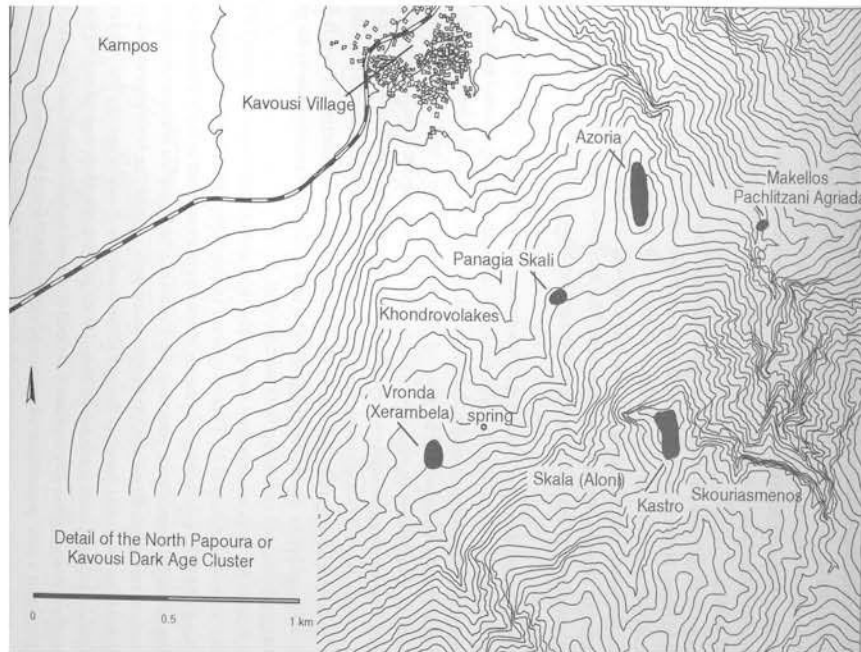


Abb.69 Kavousi, "Cluster" der Dunklen Jahrhunderte

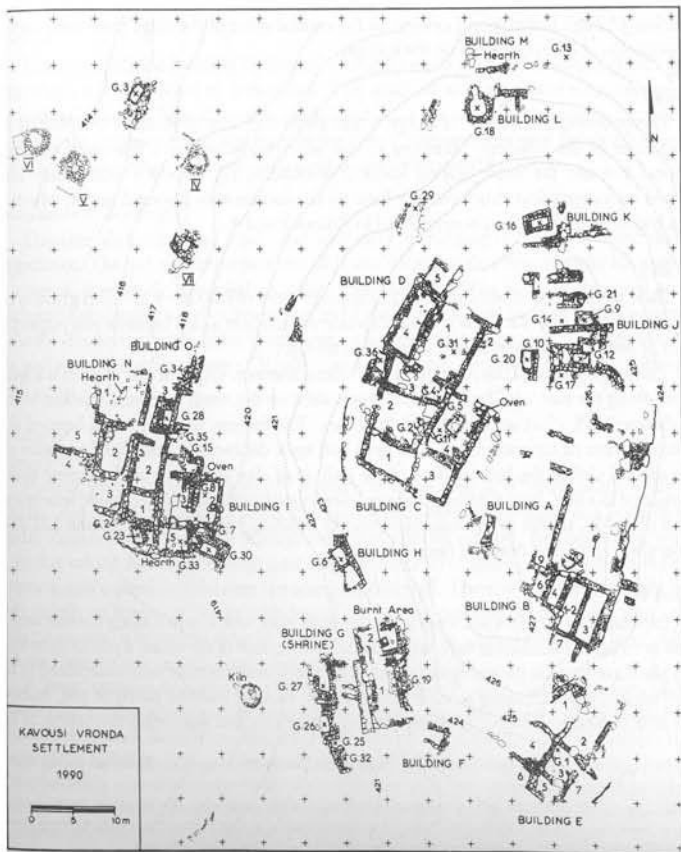


Abb.70 Kavousi Vronda, Plan

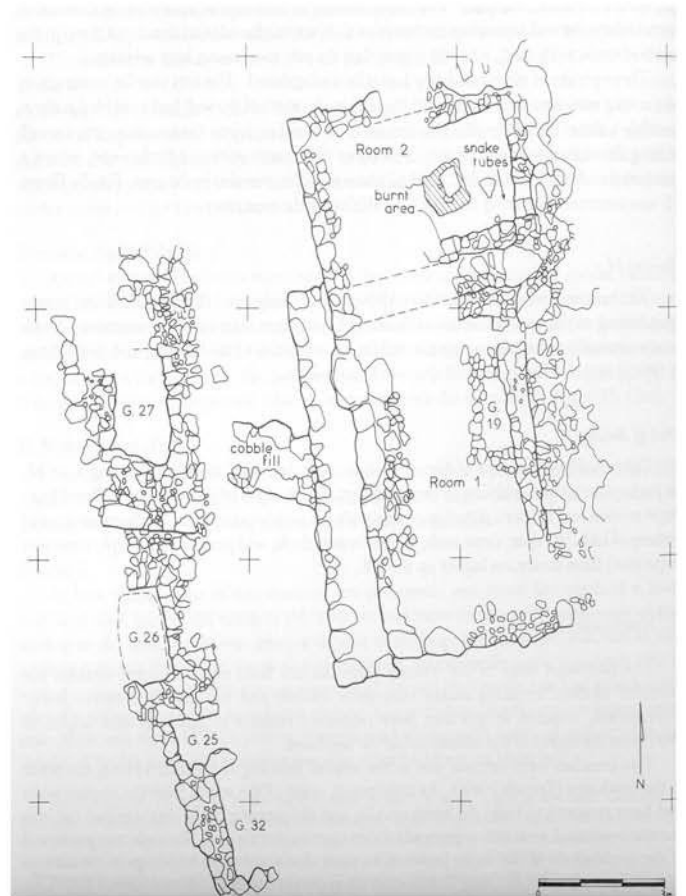


Abb.71 Kavousi Vronda, Schrein, Plan

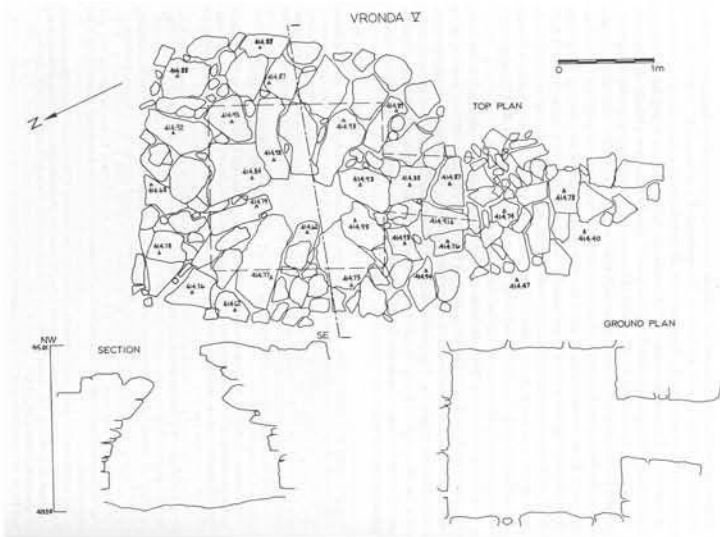


Abb.72 Kavousi Vronda, Grab V

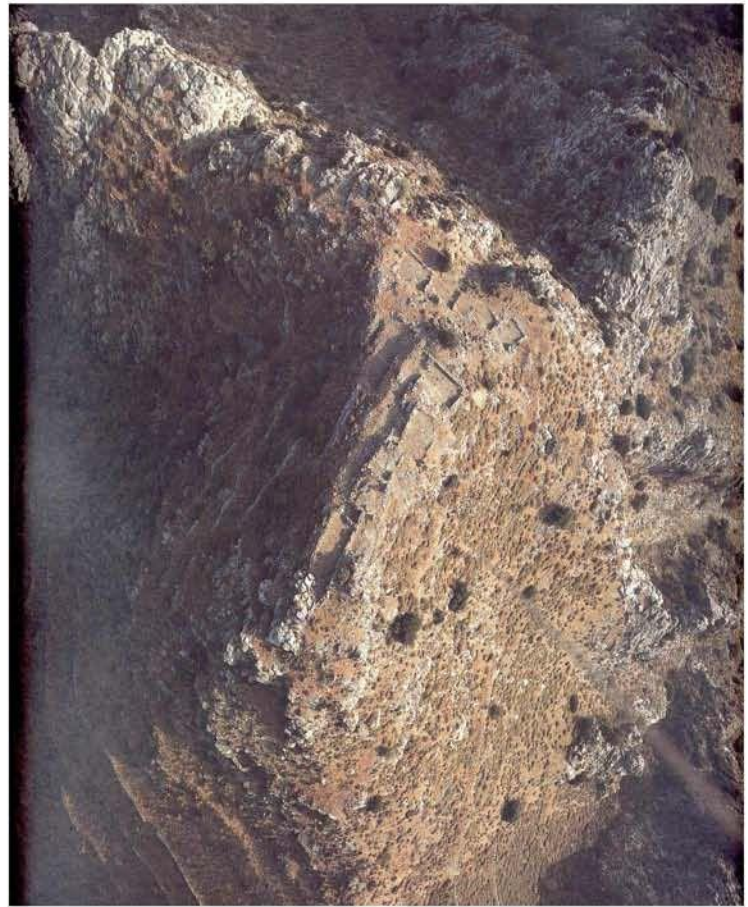


Abb.73 Kavousi Kastro, Lage

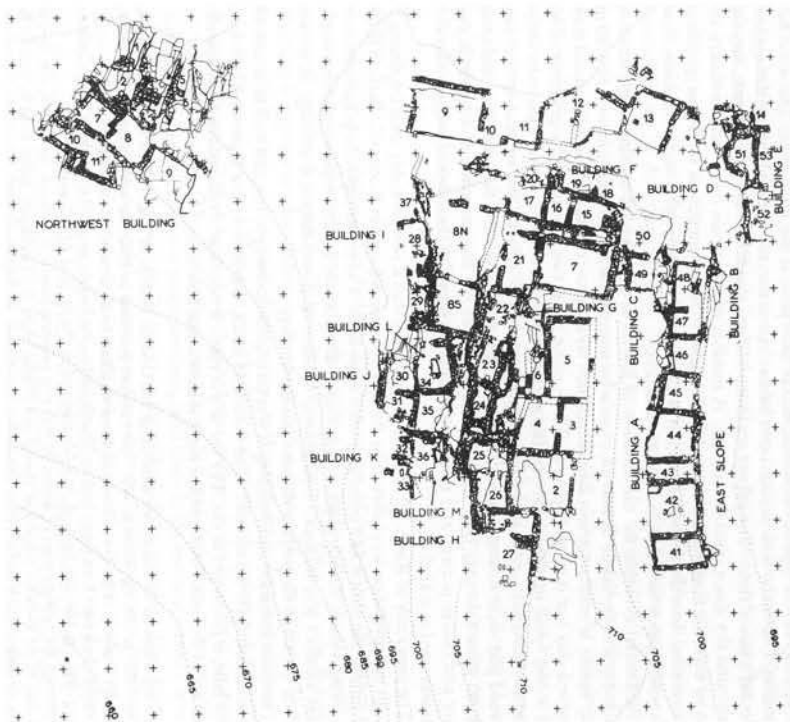


Abb.74 Kavousi Kastro, Plan

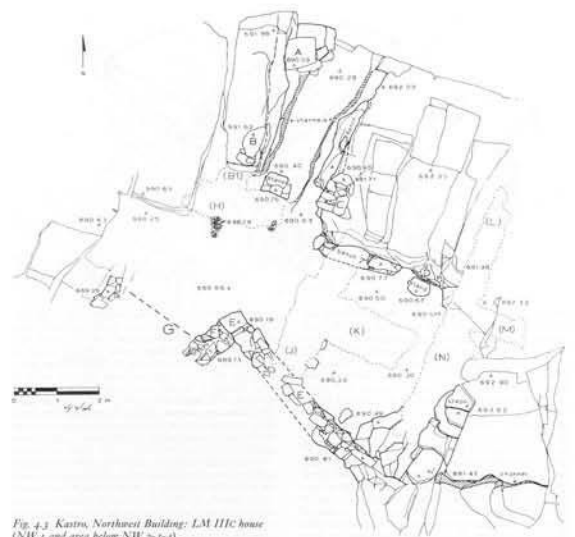


Fig. 4.3 Kastro, Northwest Building: LM IIIc house (NW 1 and area below NW 2-3-4).

Abb.75 Kavousi Kastro, NW-Gebäude

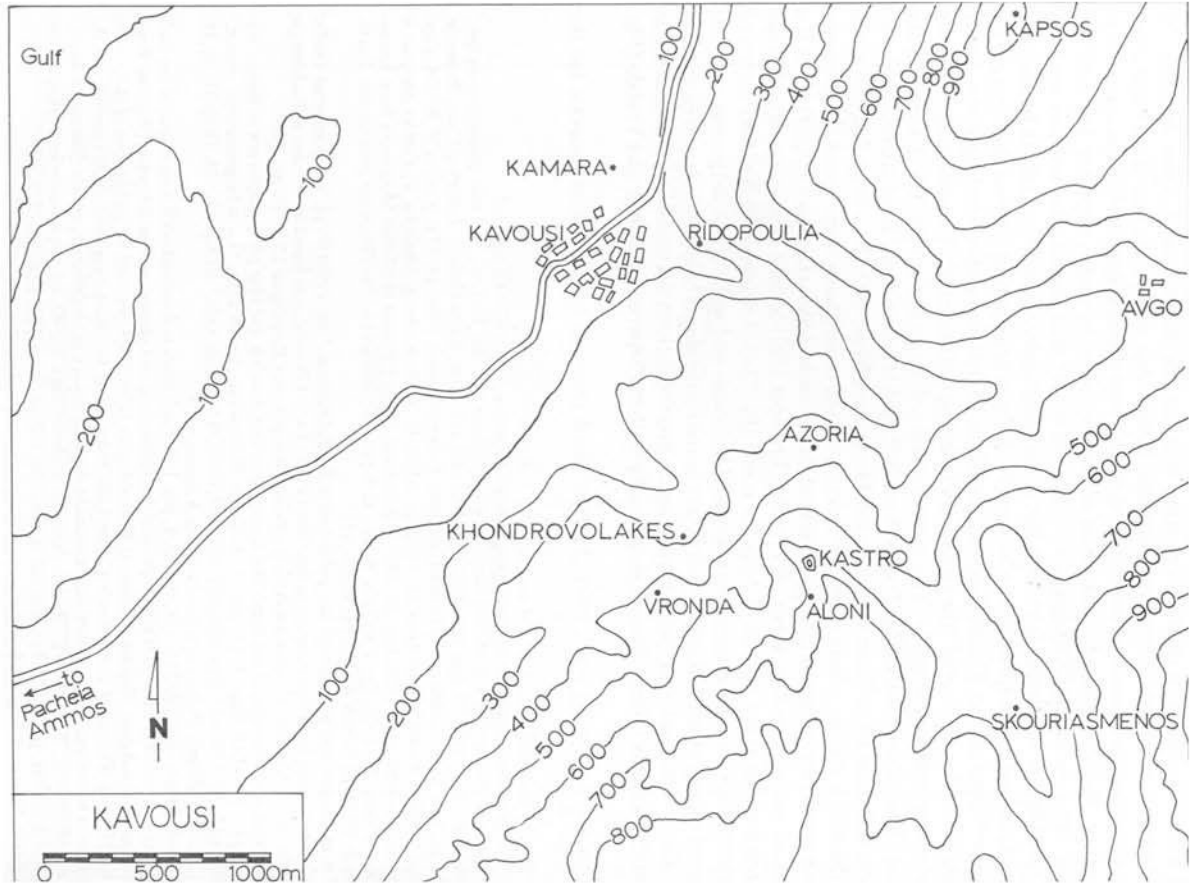


Abb.76 Kavousi Azoria, Lage

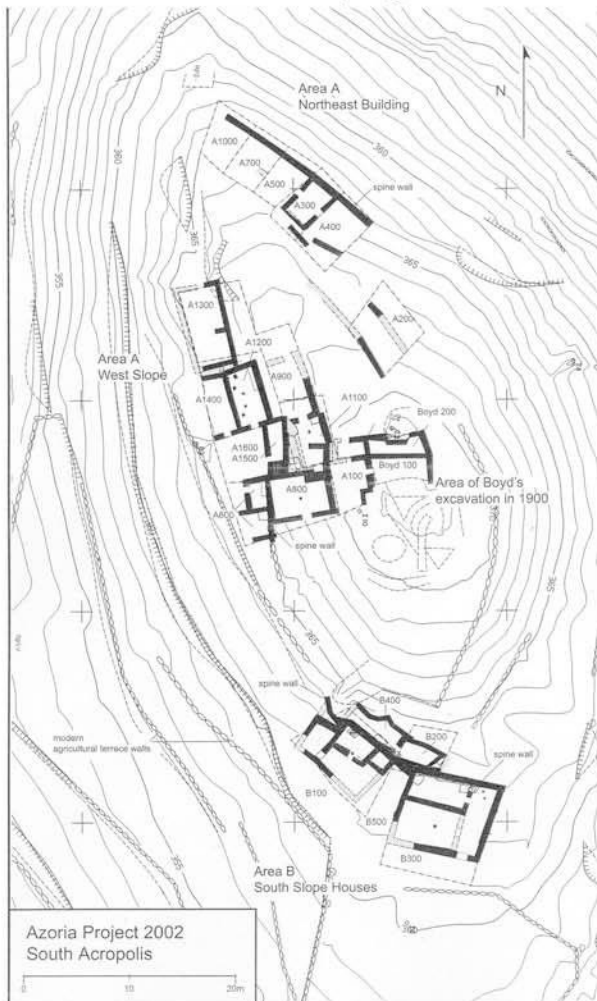


Abb.77 Kavousi Azoria, Plan



Abb.78 Vasiliki Kephala, "Tempel", Luftbild



Abb.79 Vasiliki Kephala, "Tempel", Plan



Abb.80 Vasiliki Kephala, Hall of the Altar



Abb.81 Vasiliki Kephala, Baitylos in der Hall of the Altar



Abb.82 Vasiliki Kephala, sitzende Götterfigur

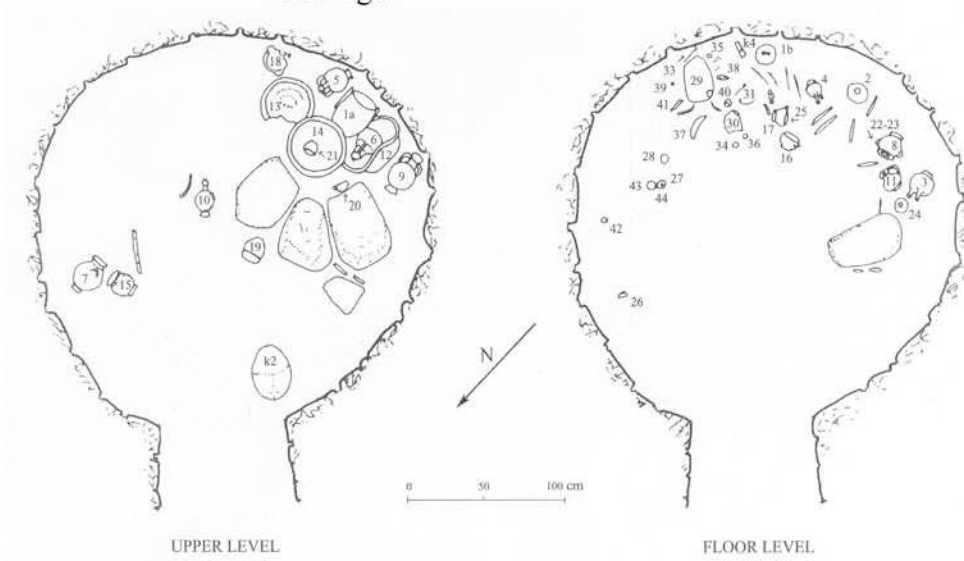


Abb.83 Vasiliki Kephala, Grab bei Karamaki, Pläne

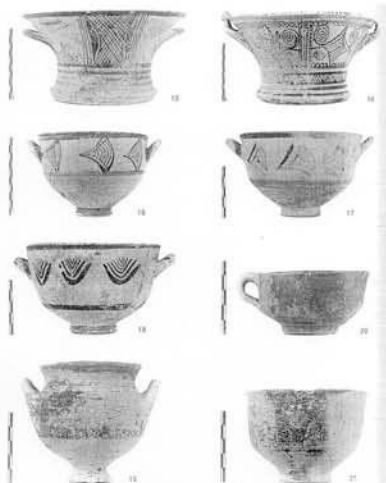


Abb.84 Grab bei Karamaki, Keramikbeigaben (Auswahl)

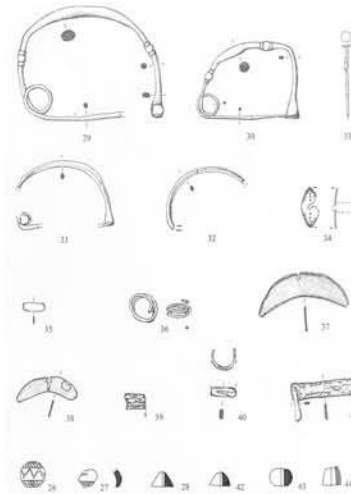


Abb.85 Grab bei Karamaki, Kleinfunde



Abb.86 Istron Vrokastro, Luftbild

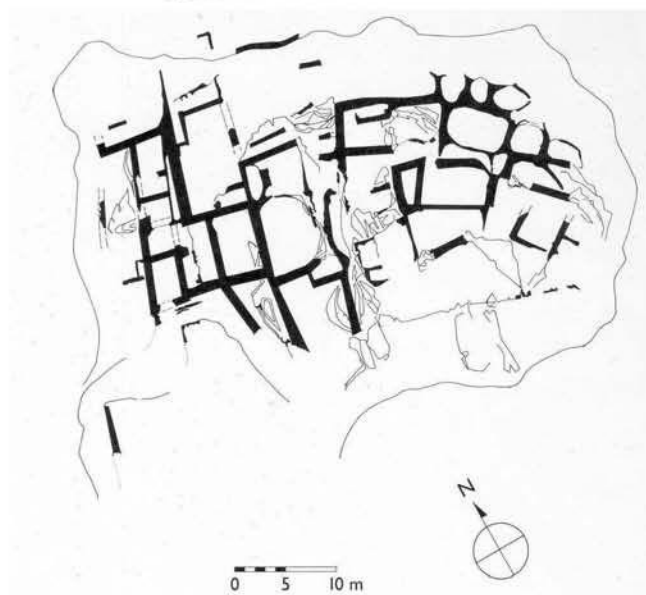
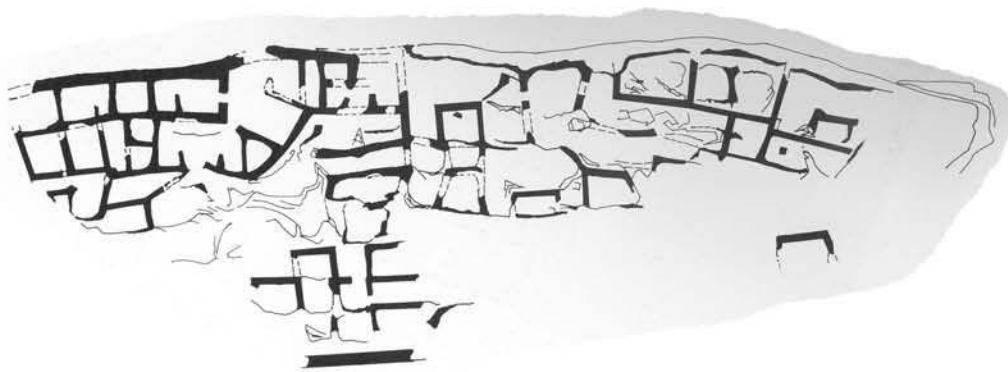


Abb.87 Istron Vrokastro, Unter- und Oberstadt, Plan

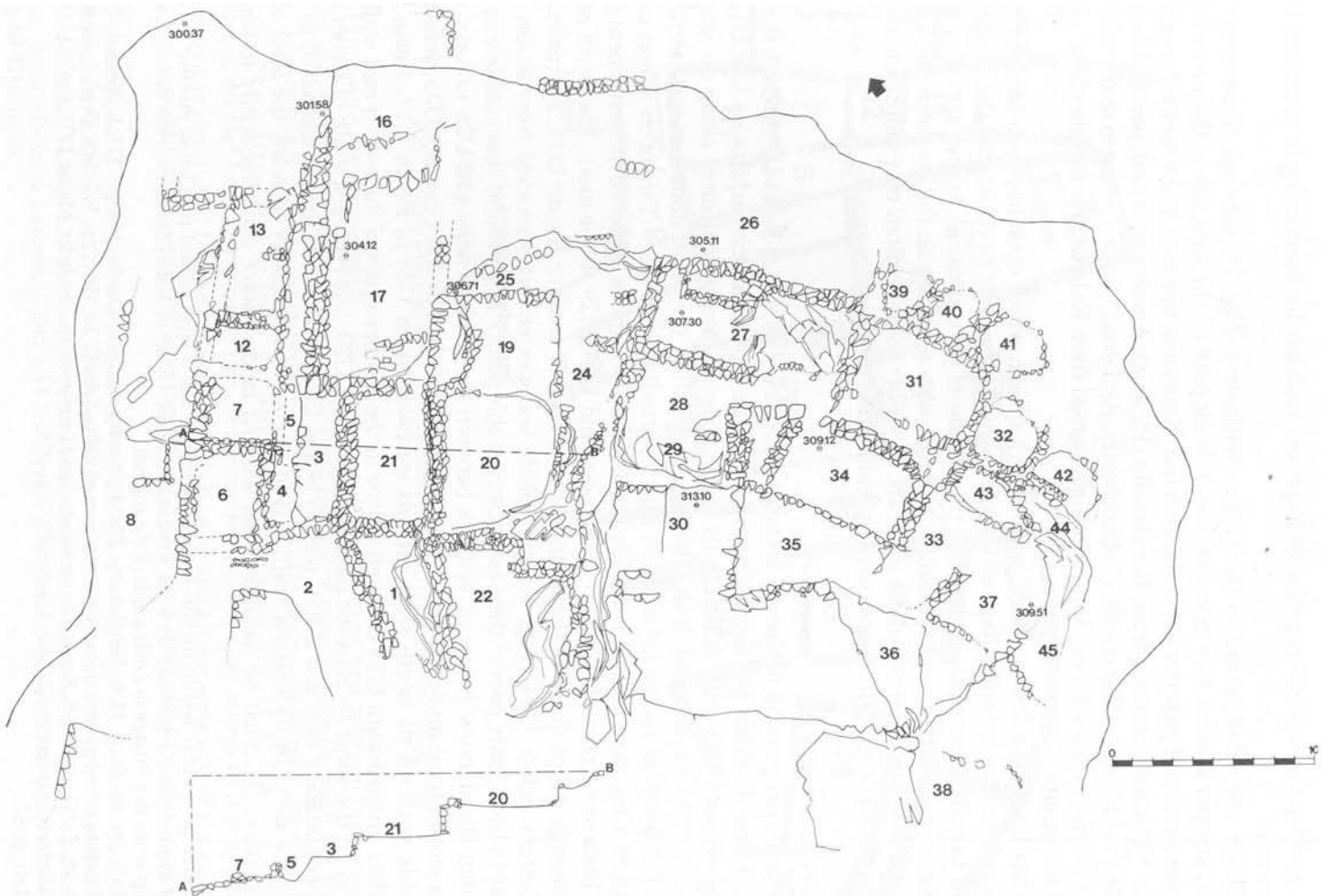


Abb.88 Istron Vrokastro, Plan

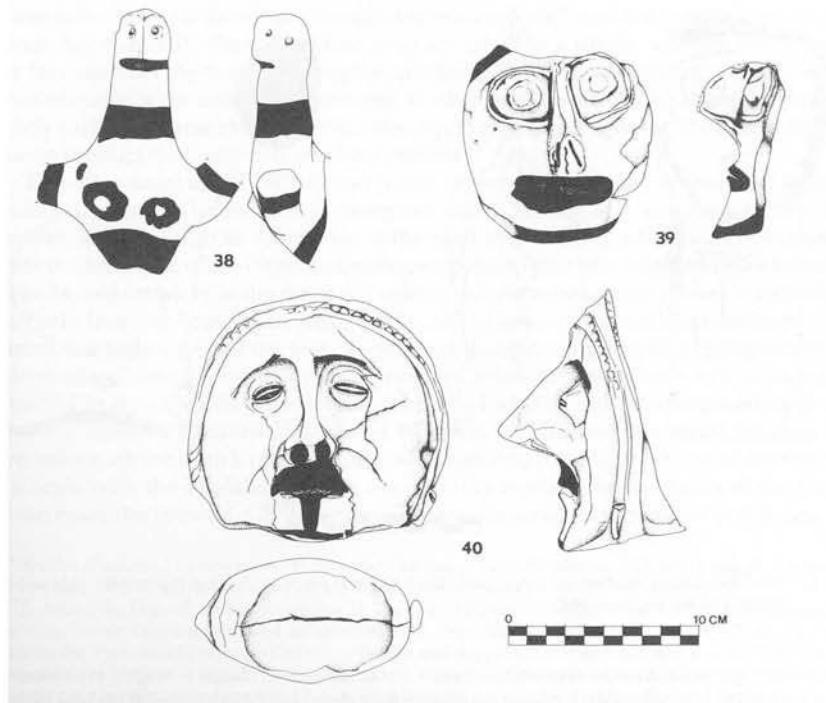


Abb.89 Istron Vrokastro, Figurinen



Abb.90 Vrokastro, Grab V, Beigaben

Abb.91 Vrokastro, Grab V, Bronzefibel

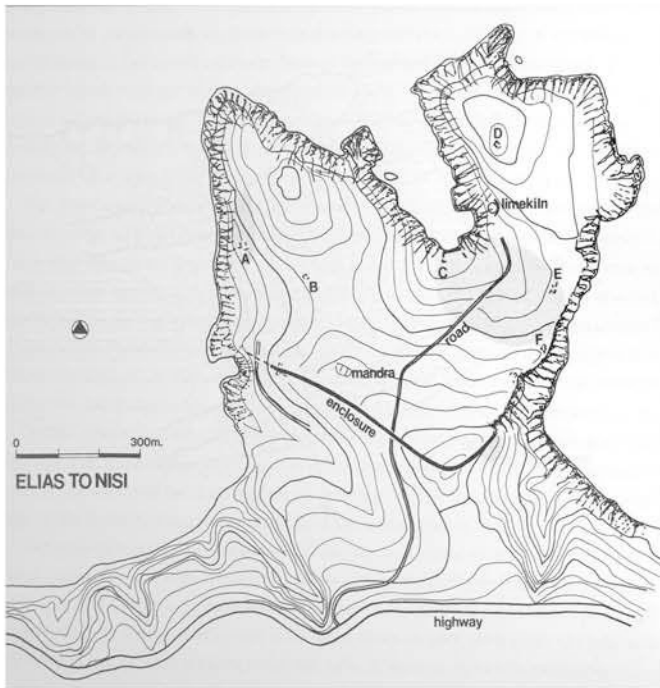


Abb.92 Elias To Nisi, Plan

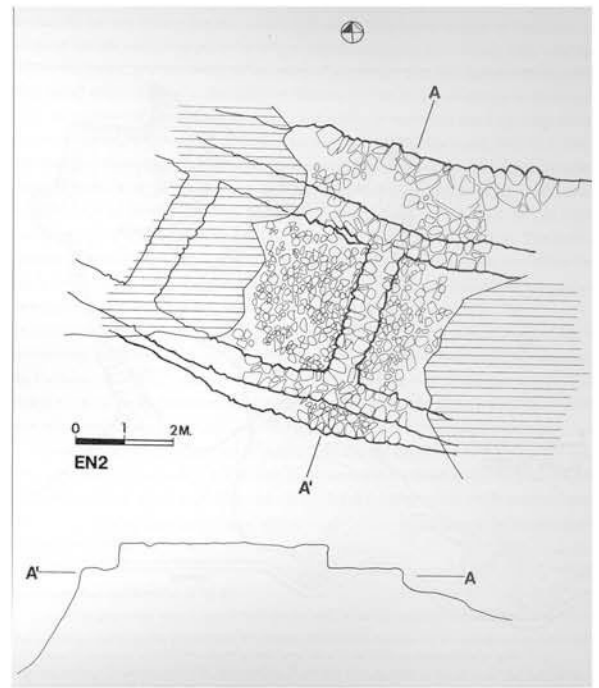


Abb.93 Elias To Nisi, Befestigungswall



Abb.94 Neapoli Kastri, Ansicht



Abb.95 Zenia Kastrocephala, Ansicht



Abb.96 Adrianos Fortetsa, Ansicht

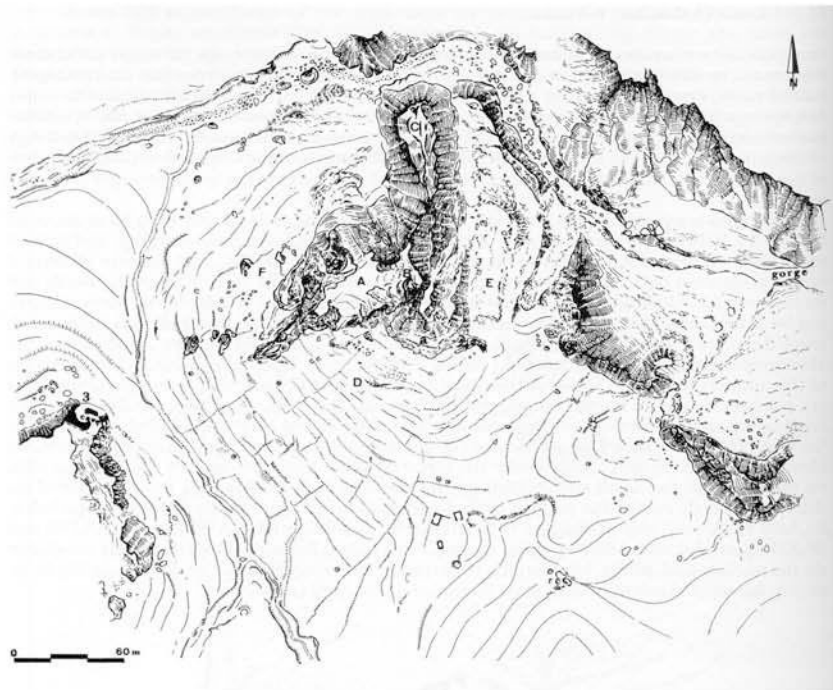


Abb.97 Adrianos Fortetsa, Plan

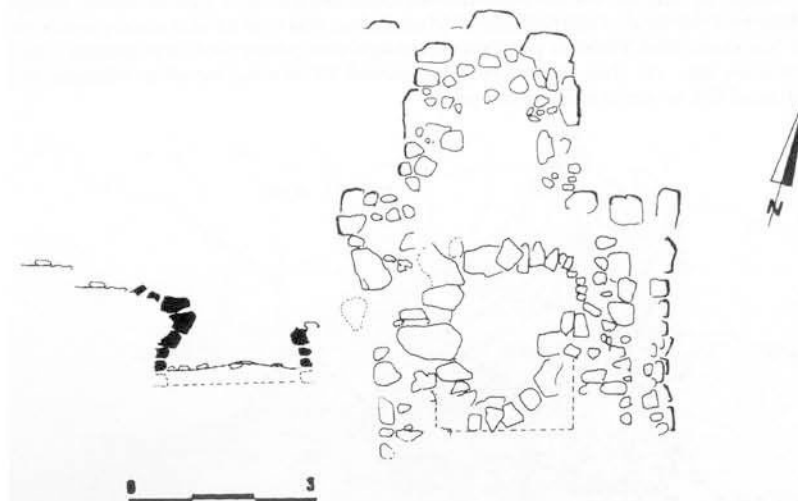


Abb.98 Adrianos Fortetsa, Tholos bei Ta Mnimata, Plan und Schnitt



Abb.99 Kritsa Kastello, Ansicht

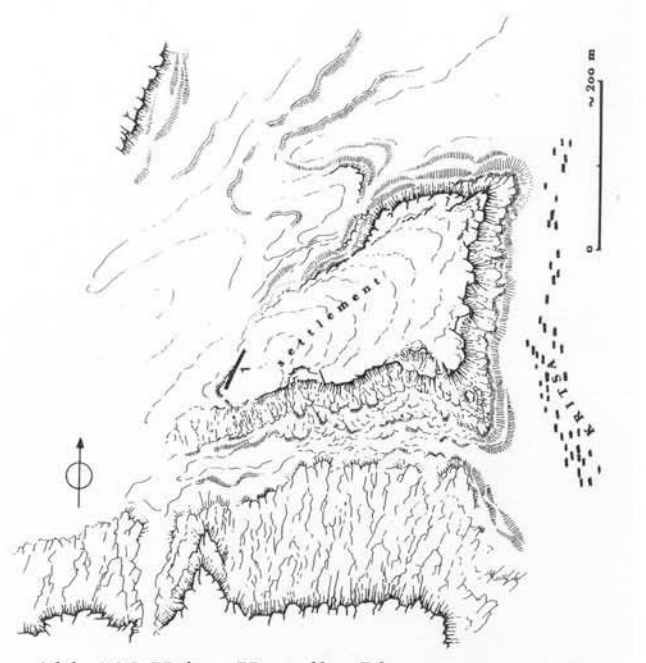


Abb.100 Kritsa Kastello, Plan

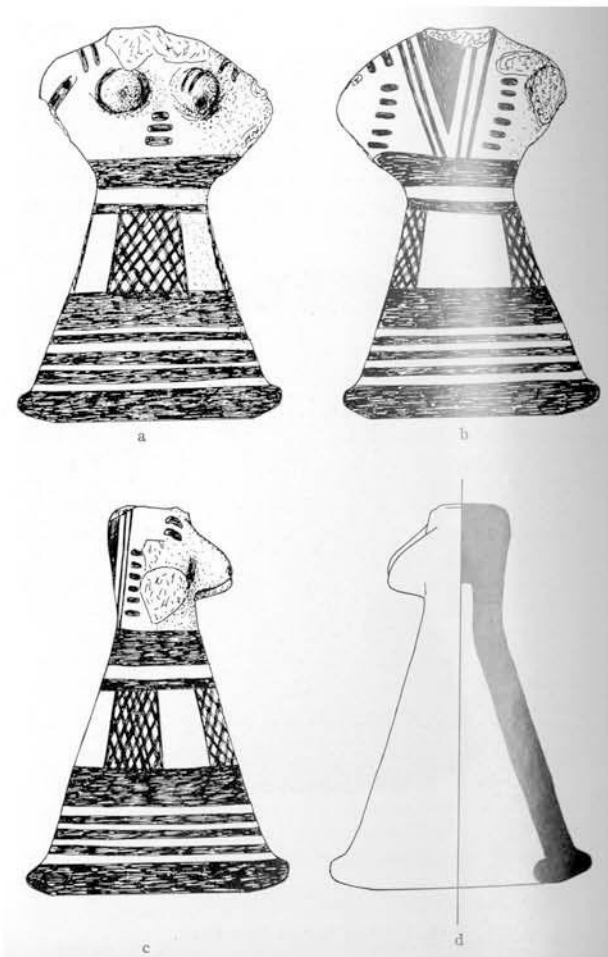


Abb.101 Kritsa Kastello, Figurine



Abb.102 Tapes Kato Kastello, Ansicht



Abb.103 Tapes Kato Kastello, Plan

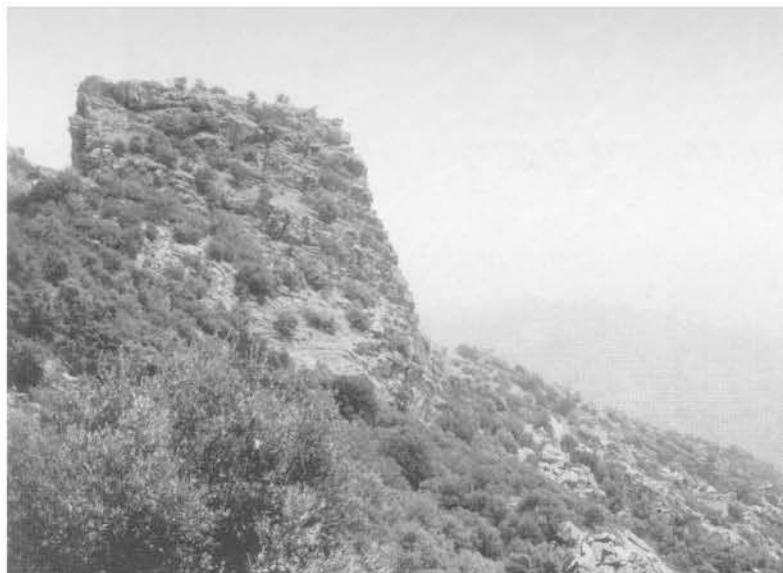


Abb.104 Mythoi Kastello, Ansicht



Abb.105 Mythoi Kastello, Plan

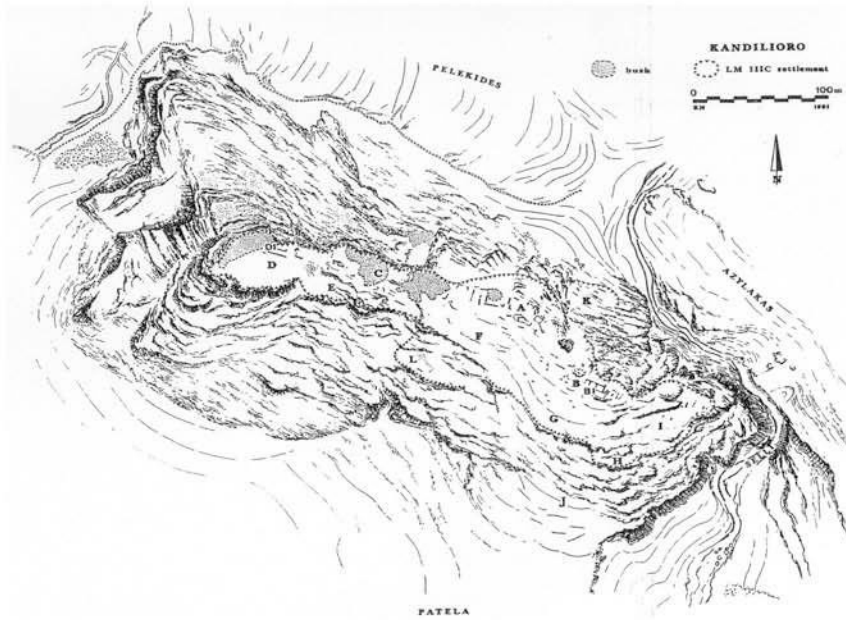


Abb.106 Loutraki Kandilioro, Plan

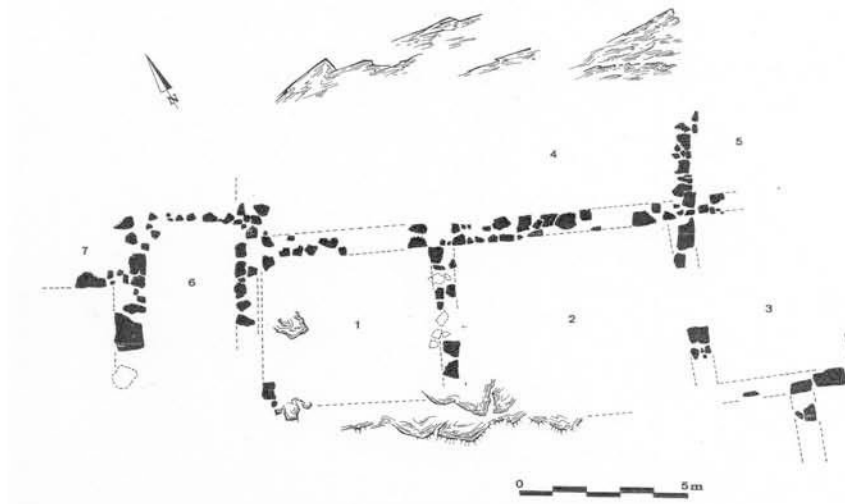


Abb.107 Loutraki Kandilioro, Haus B, Plan



Abb.108 Keramik aus dem Lasithi-Gebirge

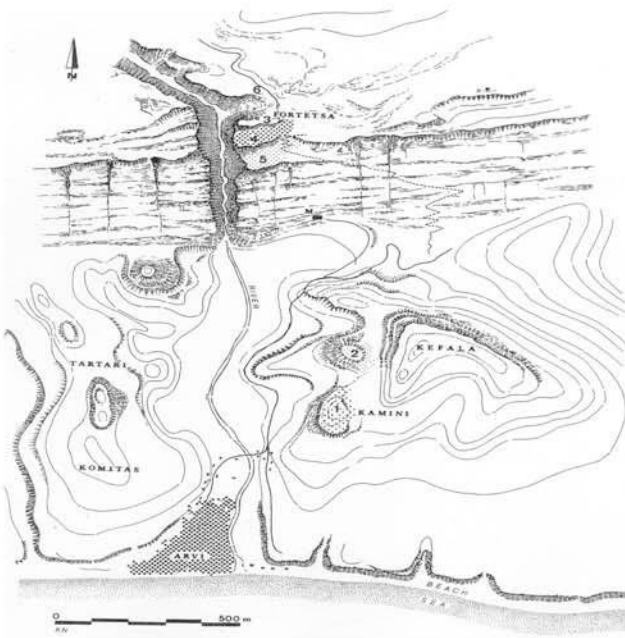


Abb.109 Arvi Fortetsa, Lage

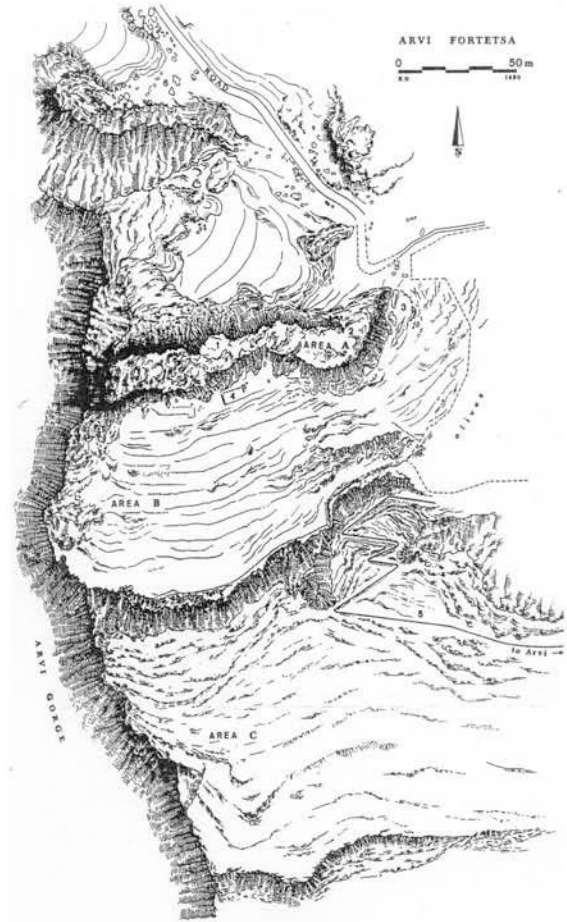


Abb.110 Arvi Fortetsa, Plan

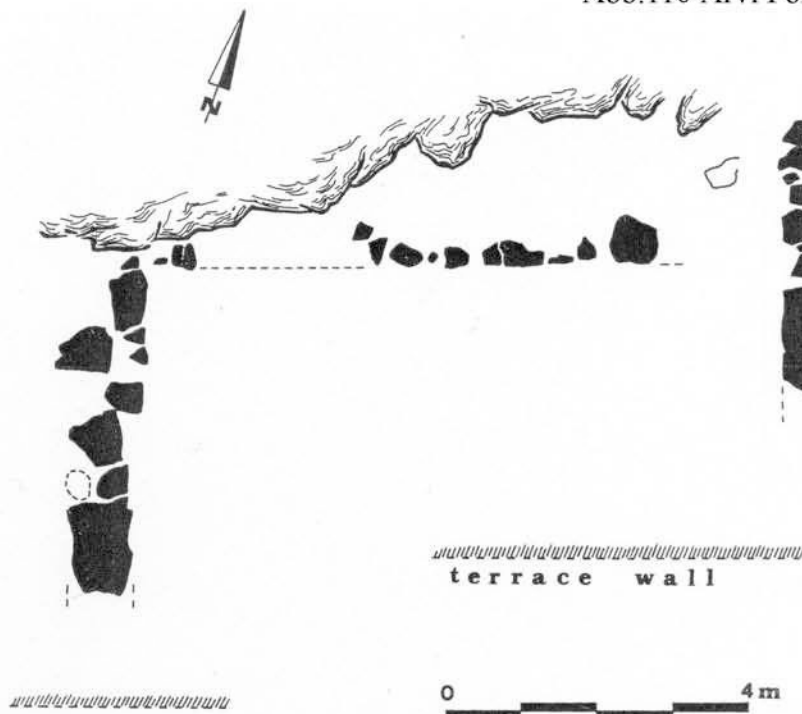


Abb.111 Arvi Fortetsa, Gebäude in Areal B



Abb.112 Erganos Kefali, Ansicht



Abb.113 Erganos Kefali, Plan

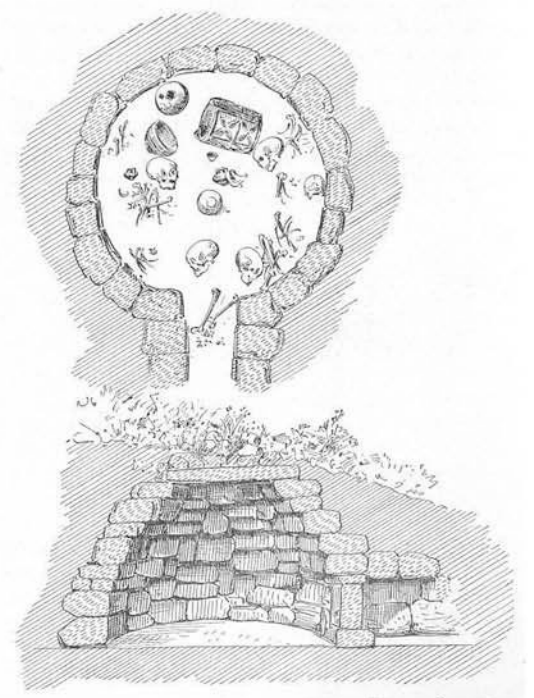


Abb.114 Erganos, Xenotafia, Tholosgrab



Abb.115 Gonies To Flechtron, Ansicht



Abb.116 Gonies To Flechtron, Plan

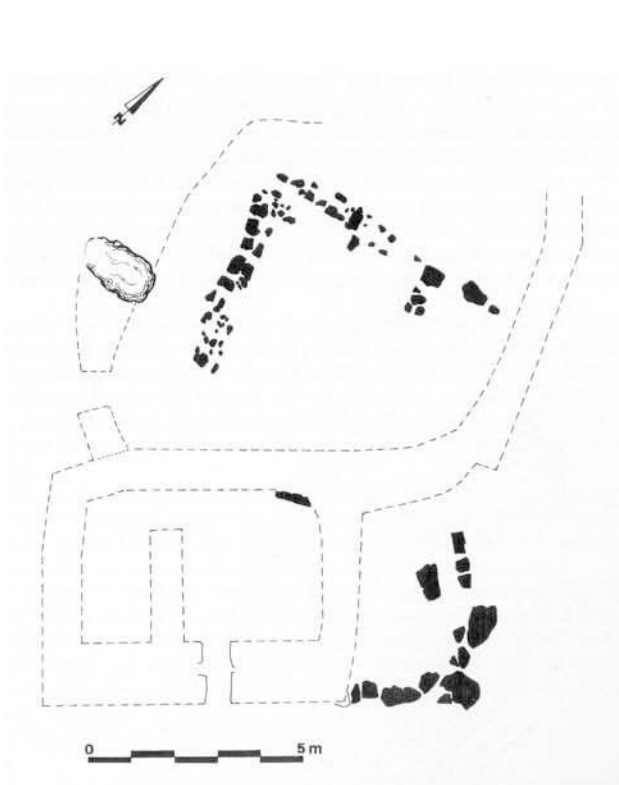


Abb.117 Gonies To Flechtron,
Gebäude unterhalb des Mandras,
Plan

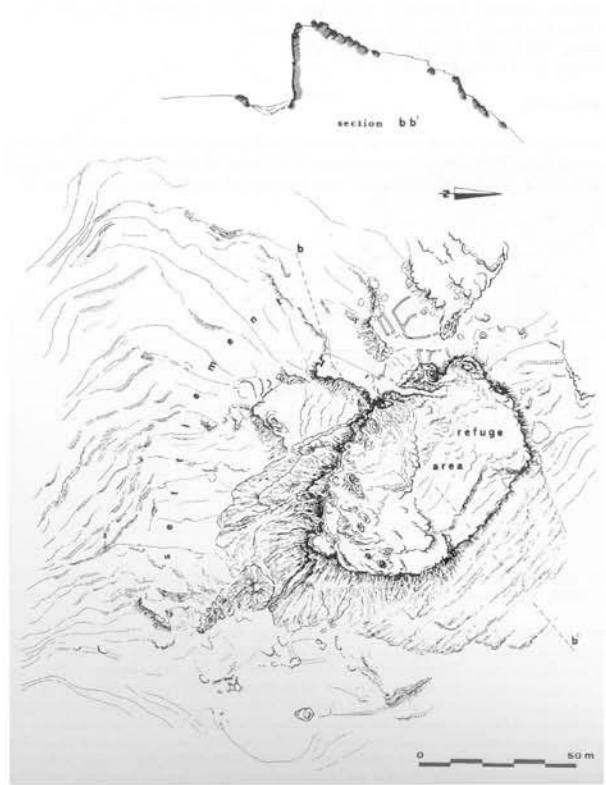


Abb.118 Gonies Porolios, Plan



Abb.119 Karfi-Papoura-Massiv, 5=Siderokefala

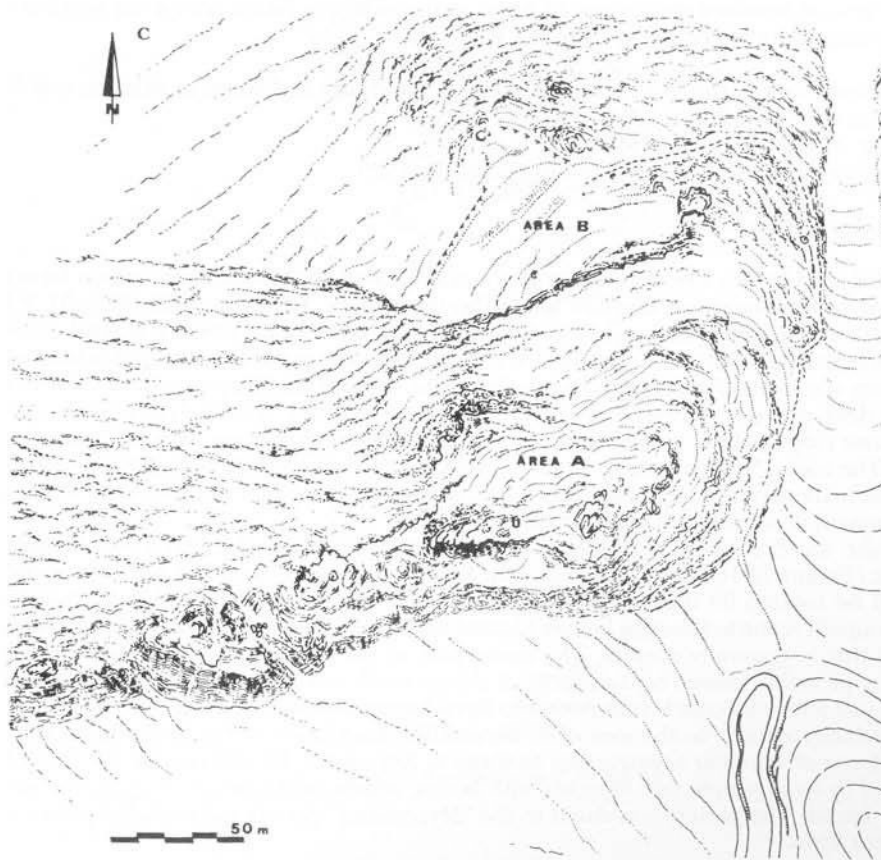


Abb.120 Siderokefala, Plan



Abb.121 Karphi, Ansicht



Abb.122 Karphi, Ansicht



Abb.123 Karphi, Lage

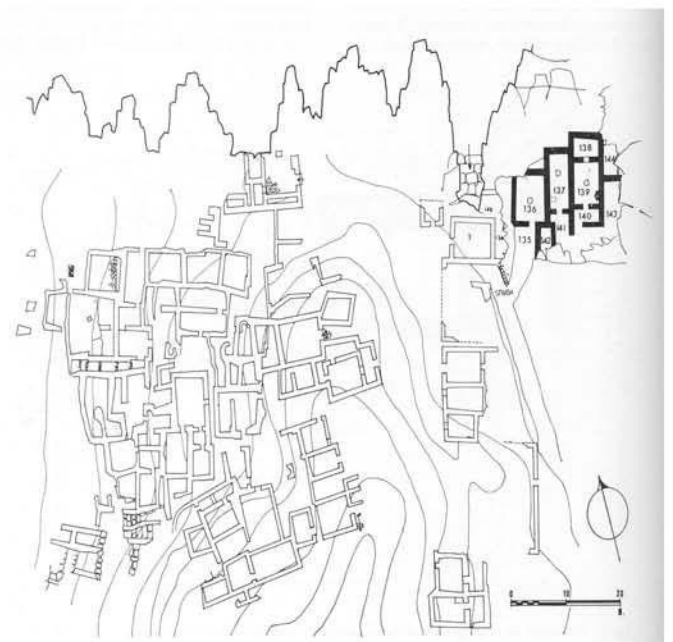


Abb.124 Karphi, Gesamtplan



Abb.125 Karphi, Westviertel, Plan

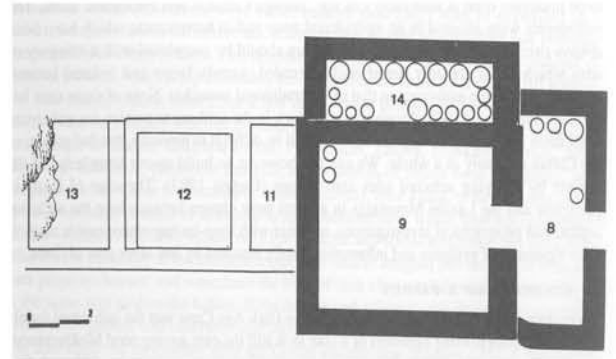


Abb.126 Karphi, "Great House", Plan

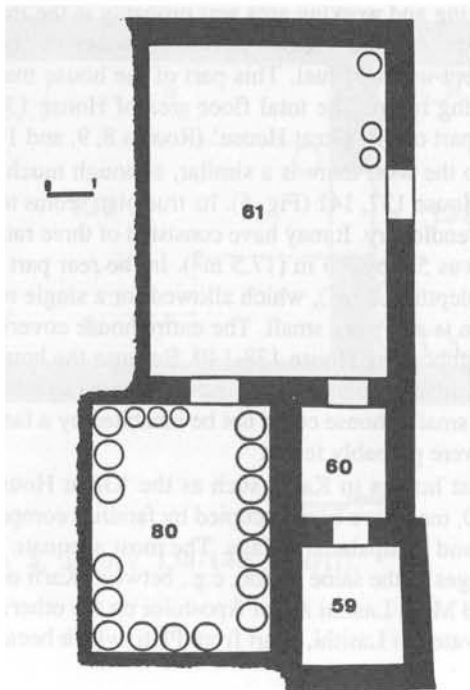


Abb.127 Karphi, "House of the priest", Plan

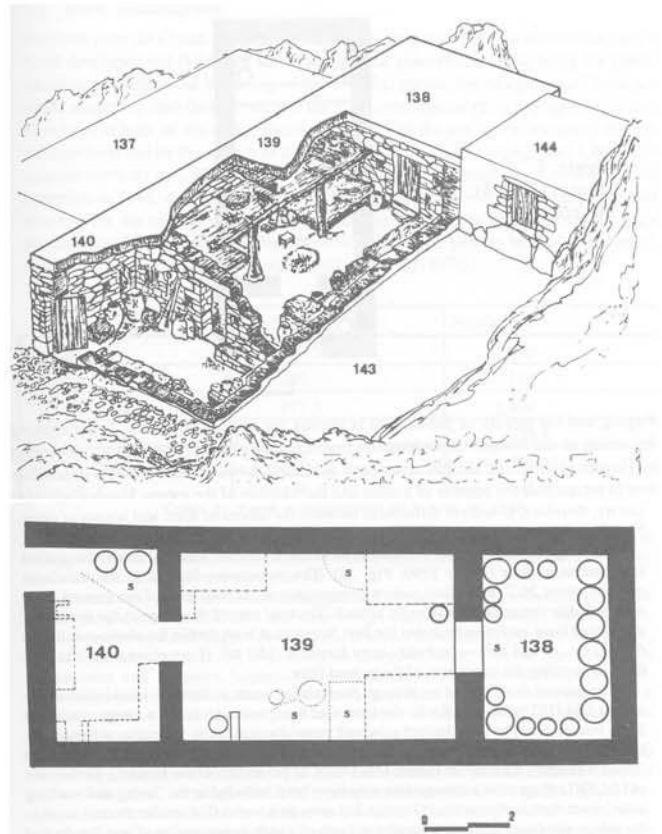


Abb.128 Karphi, Komplex 138-140, Plan und Rekonstruktion



Abb.129 Karphi, Figurinen aus dem "Tempel"



Abb.130 Karphi, "Tempel", Blaue Ware

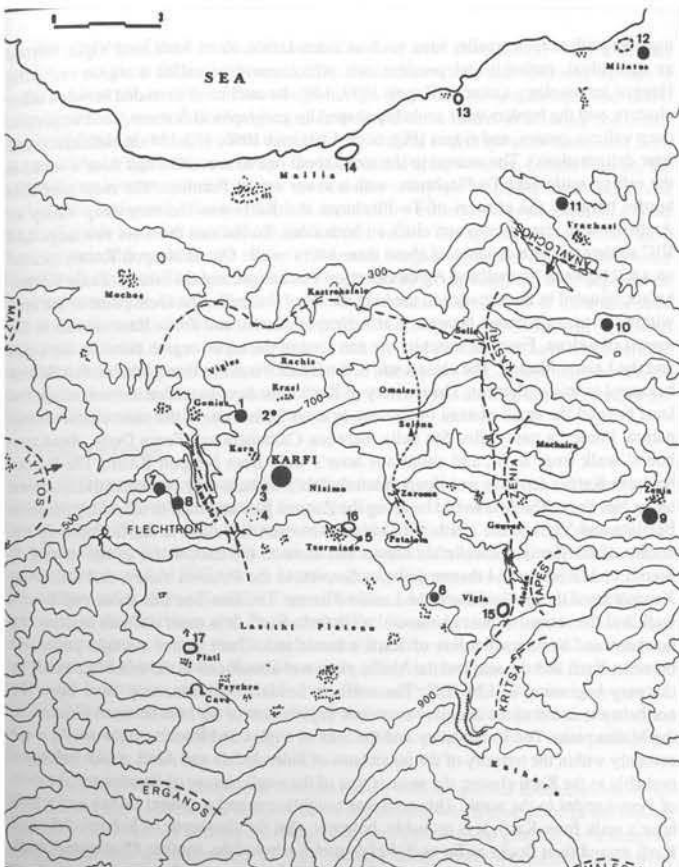


Abb.131 Karphi, Hinterland, Karte

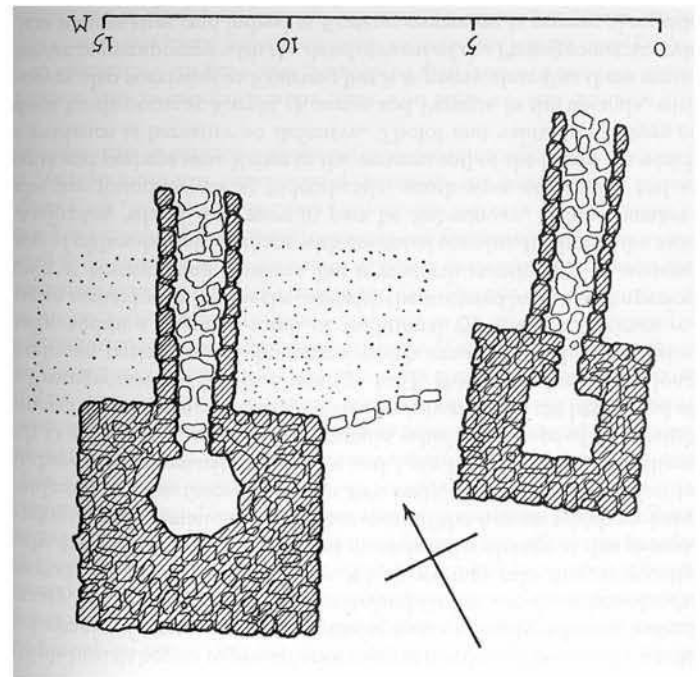


Abb.132 Karphi, Ta Mnimata, Gräber

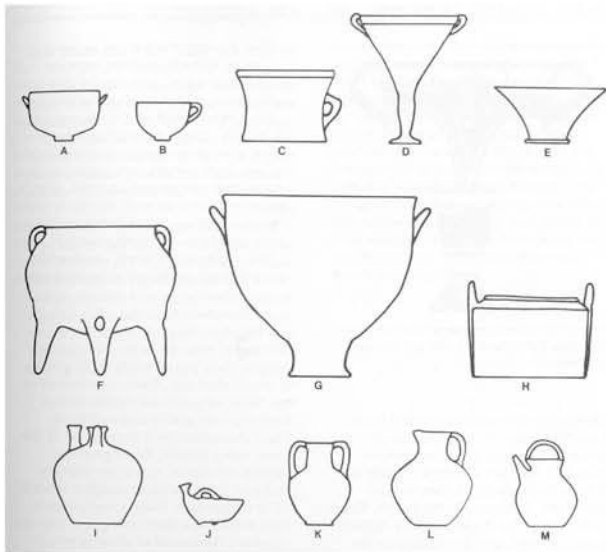


Abb.133a Karphi, Keramikformen

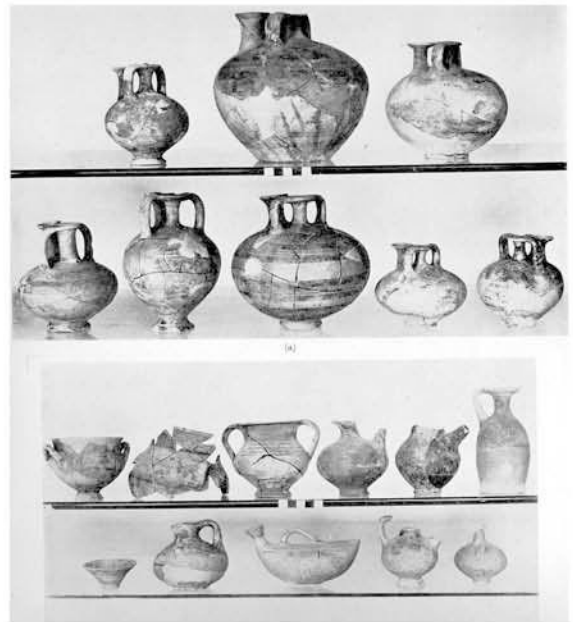


Abb.133b Karphi, Feinkeramik

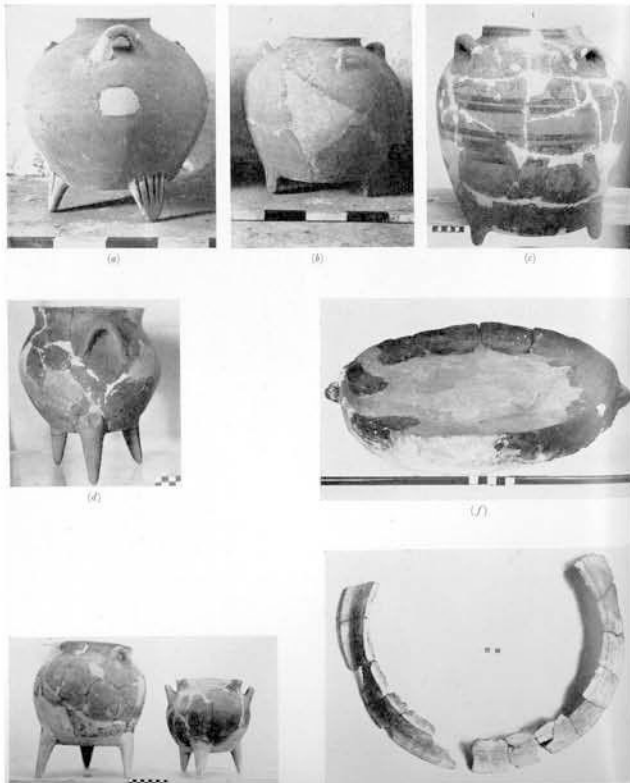


Abb.133c Karphi, Gebrauchskeramik

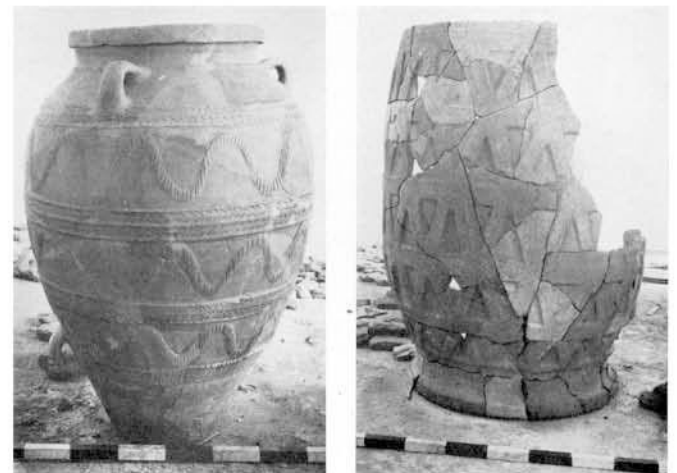


Abb.133d Karphi, Pithoi

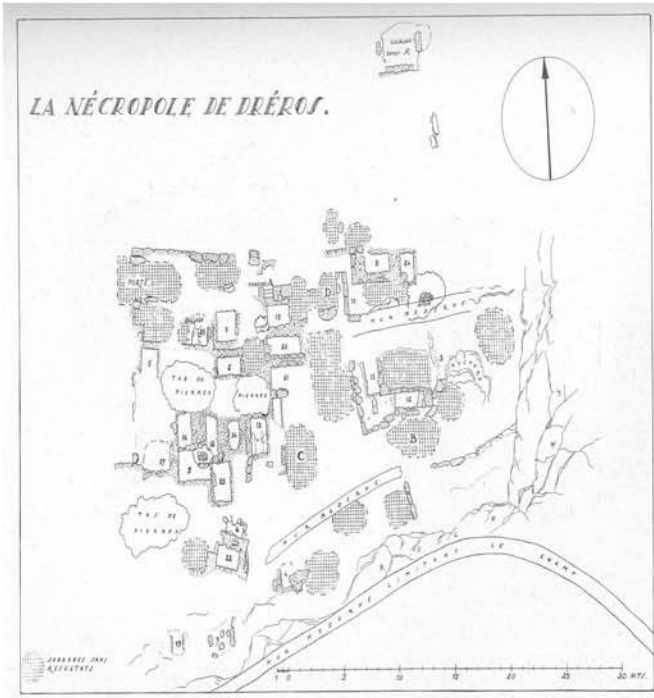


Abb.134 Dreros, Nekropole, Plan

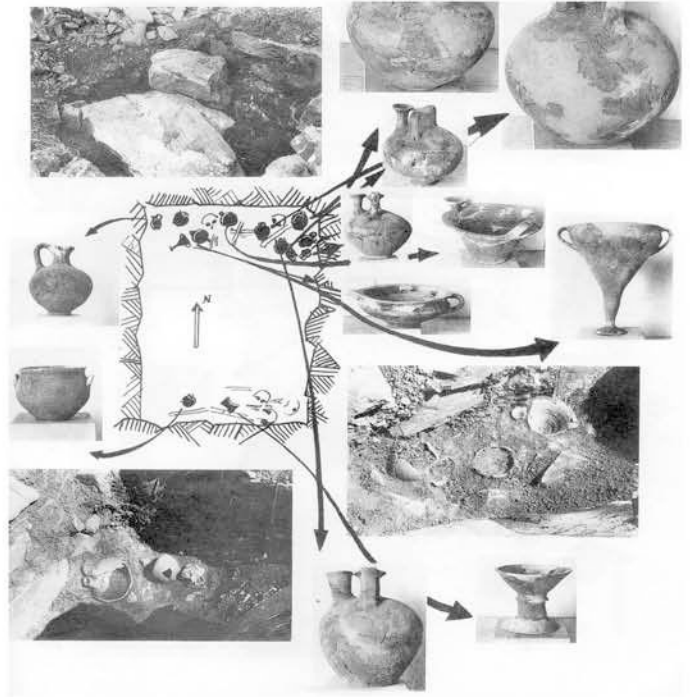


Abb.135 Dreros, Grab G1

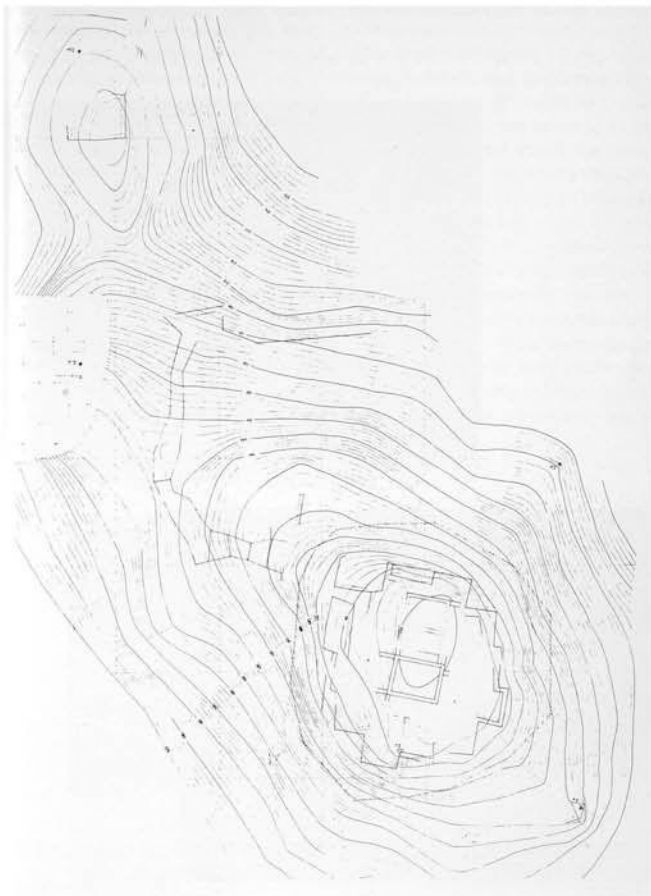


Abb.136 Smari Profitis Elias, Plan

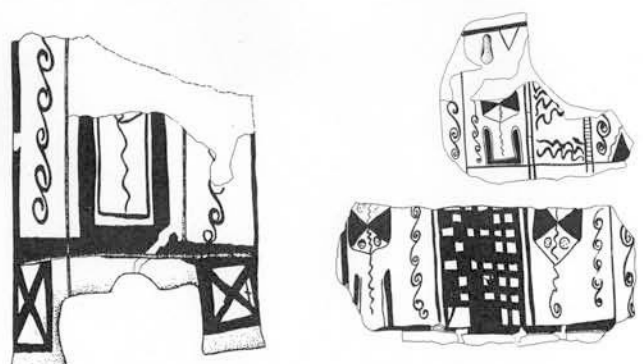


Abb.137 Afrati Profitis Elias, Sarkophag



Abb.138 Prusias Patela, Plan



Abb.139 Snake Tube

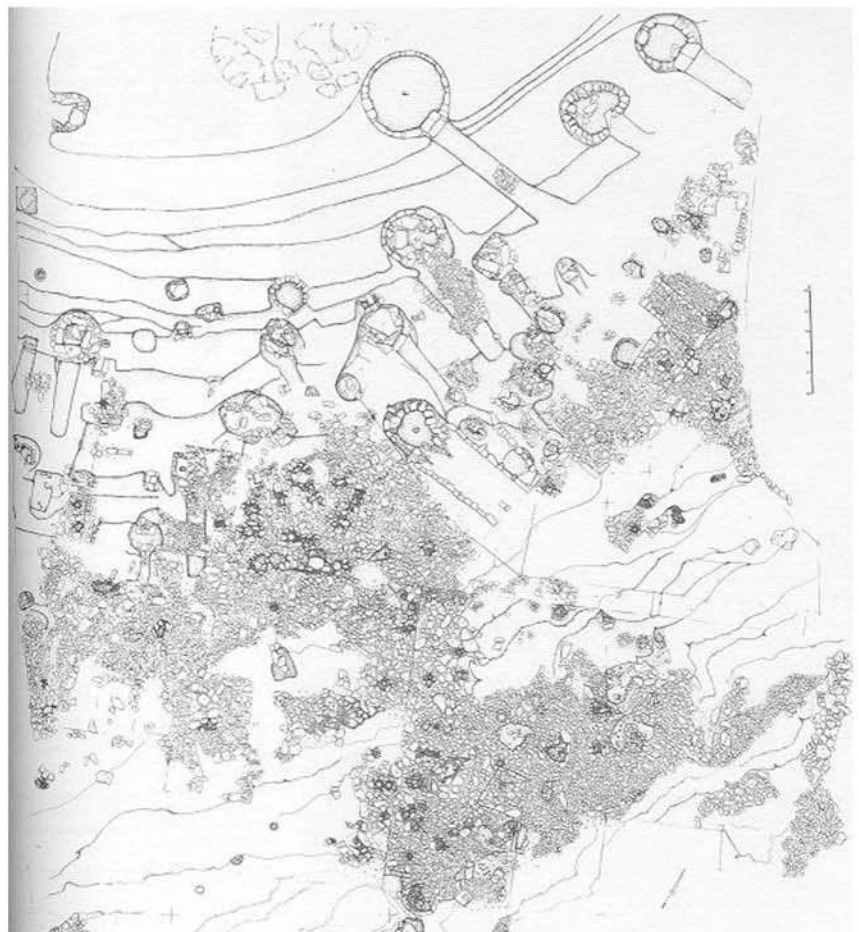


Abb.140 Siderospilia, Nekropole, Plan

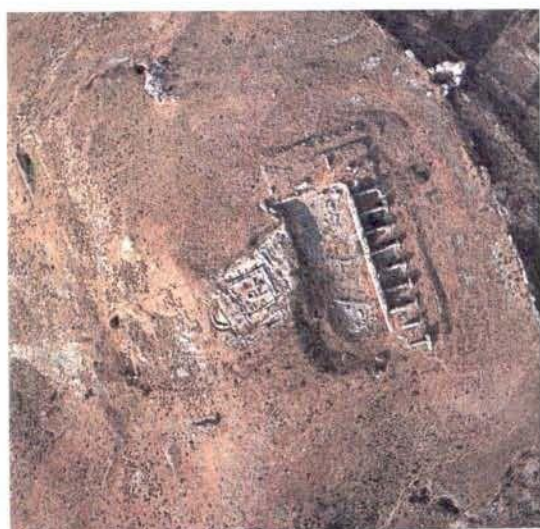


Abb.141 Gortys, Luftbild



Abb.143 Kourtes Kephala, Ansicht

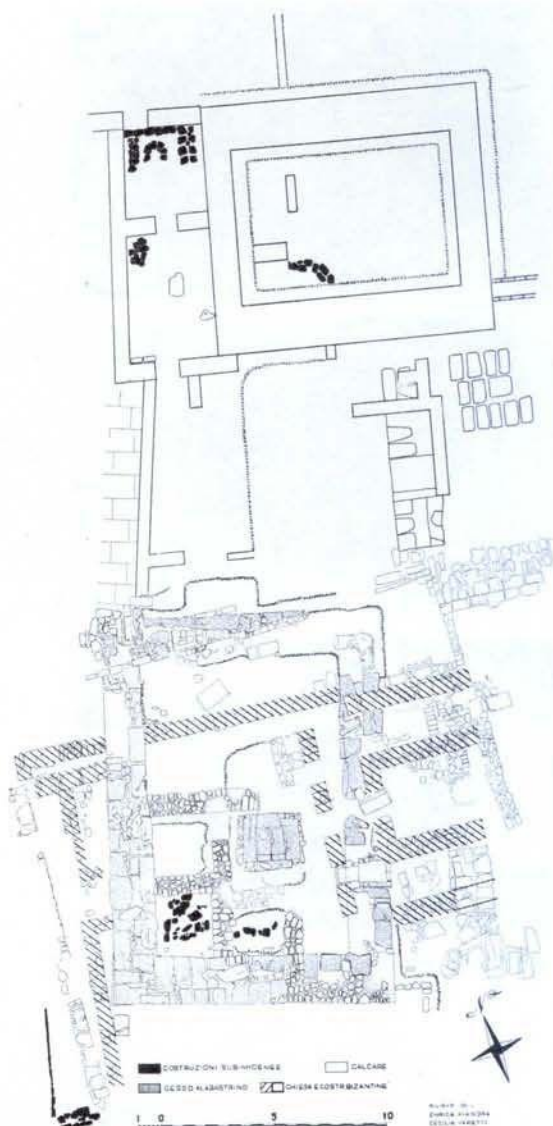


Abb.142 Gortys, Plan der Akropolis



Abb.144 Pandanassa Veni, Ansicht

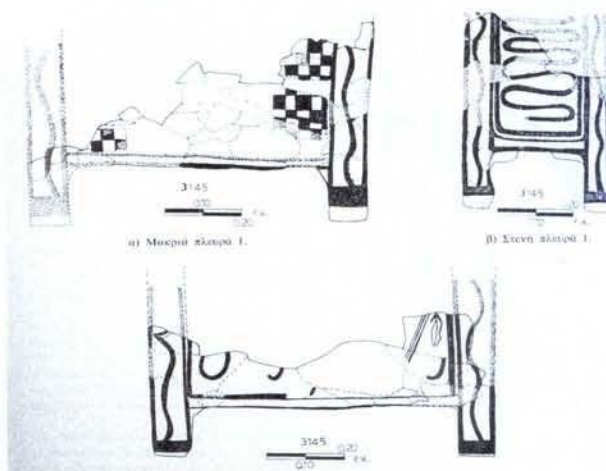


Abb.145 Pandanassa Veni, Larnax

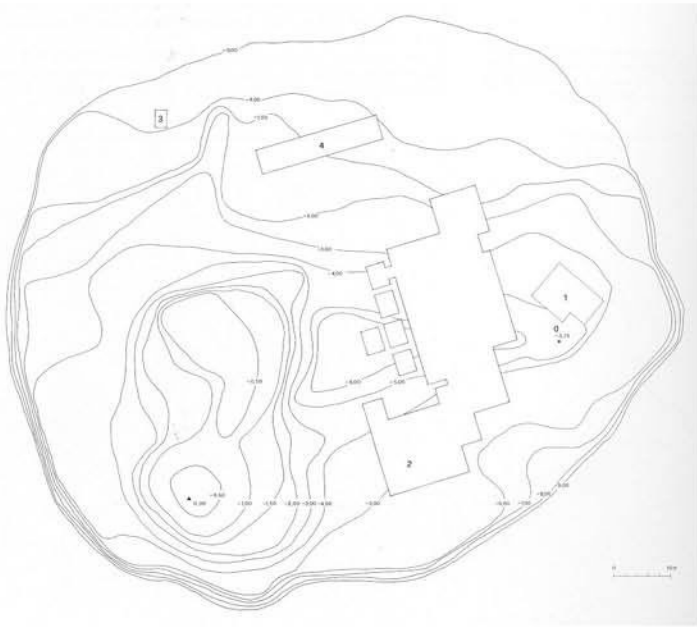


Abb.146 Thronos Kephala, Schnittplan

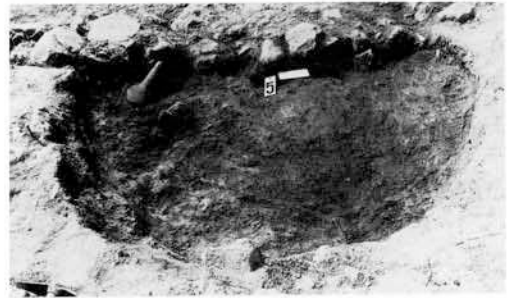


Abb.147 Thronos Kephala, Gruben



Abb.148 Thronos Kephala, Ziegenhörner in Grube



Abb.149 Orne Kastellos, Ansicht

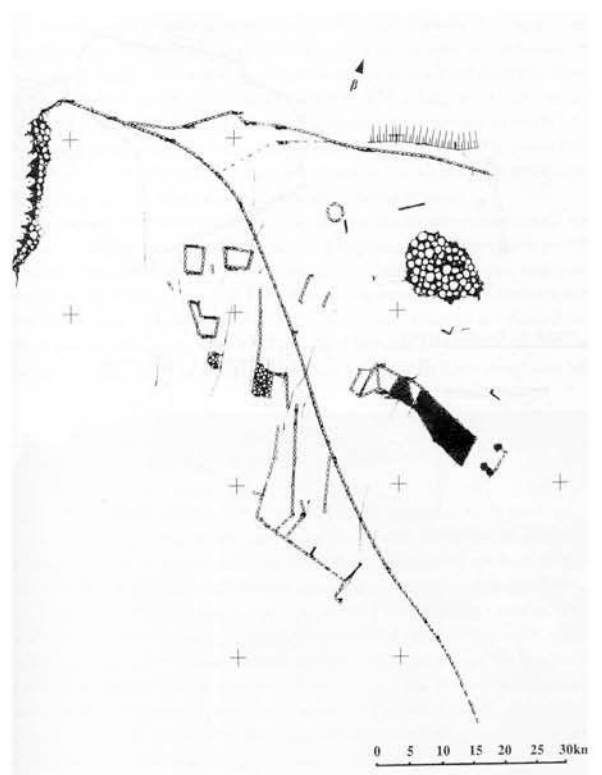


Abb.150 Orne Kastellos, Plan

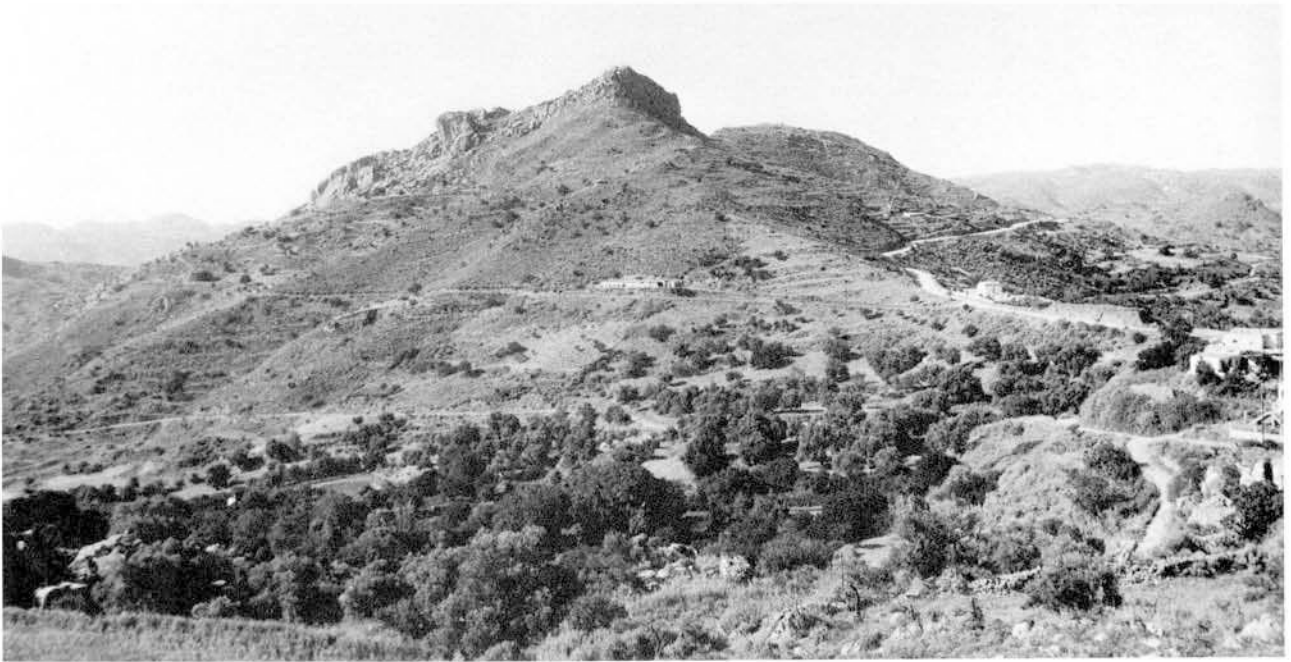


Abb.151 Frati, Ansicht



Abb.152 Atsipades Fonises, Ansicht

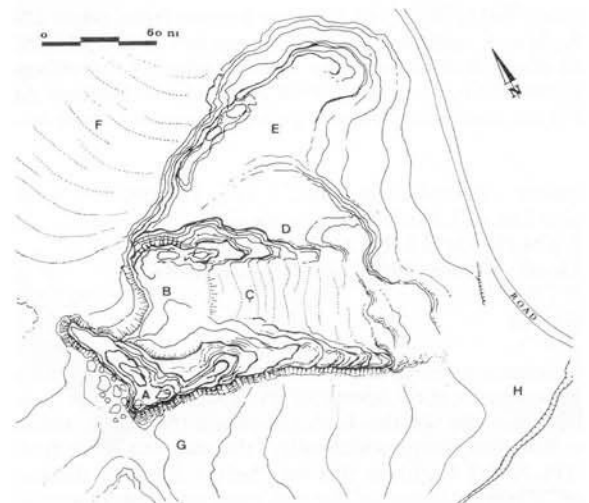


Abb.153 Atsipades Fonises, Plan



Abb.154 Paizoules, Brandgrab



Abb.155 Myrthios Kiriomanou, Ansicht

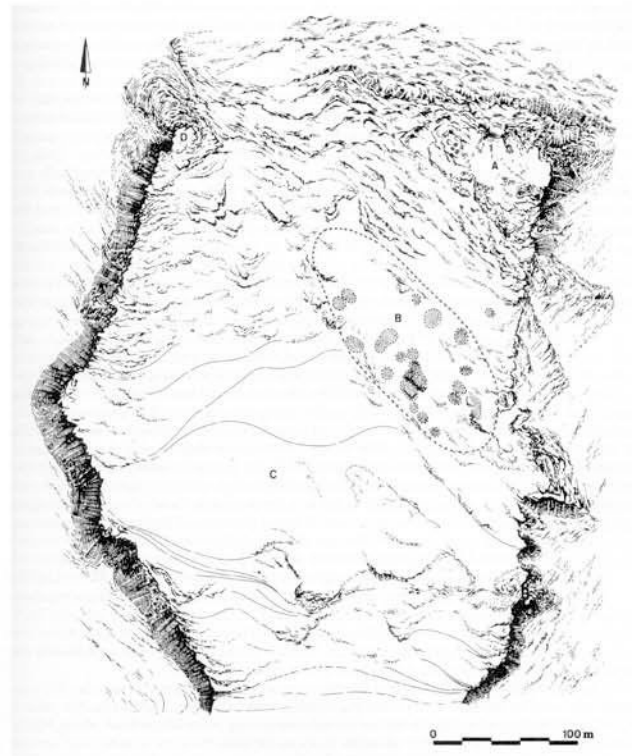


Abb.156 Myrthios Kiriomanou, Plan



Abb.157 Aghios Georgios, Kastri, Plan

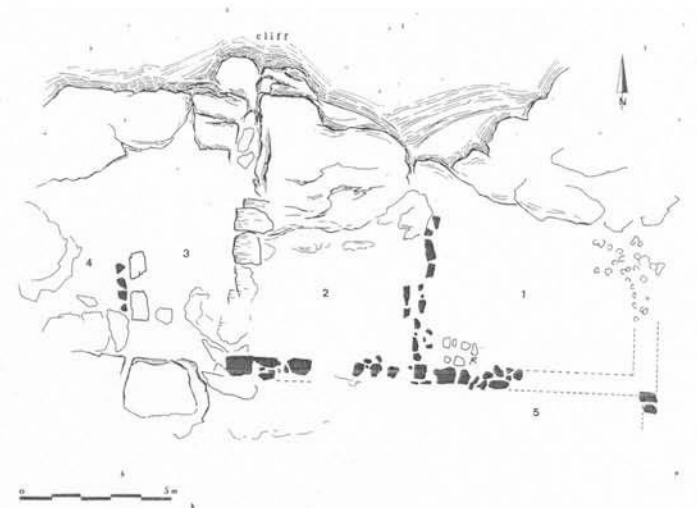


Abb.158 Aghios Georgios Kastri, "Cliff House"

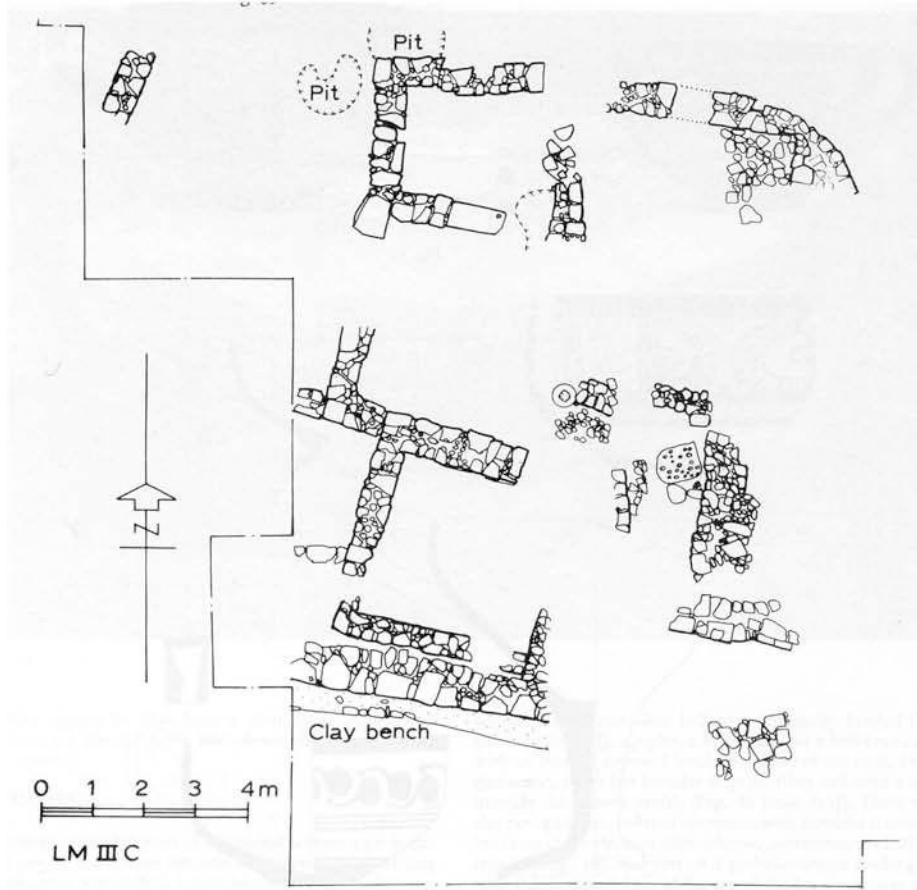


Abb.159 Knossos, Stratigraphical Mus. Site, Plan



Abb.160 Knossos, Bronzemesser
italischen Typs

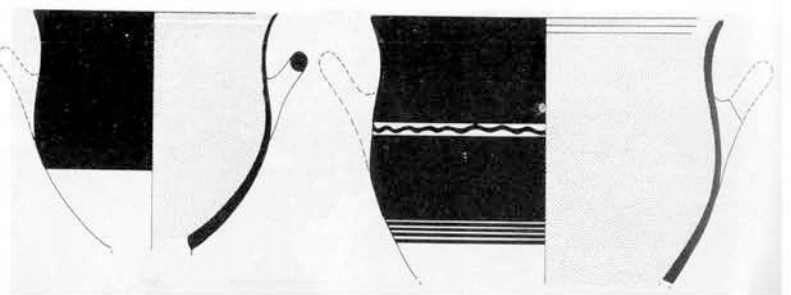


Abb.161 Knossos, Subminoische Keramik

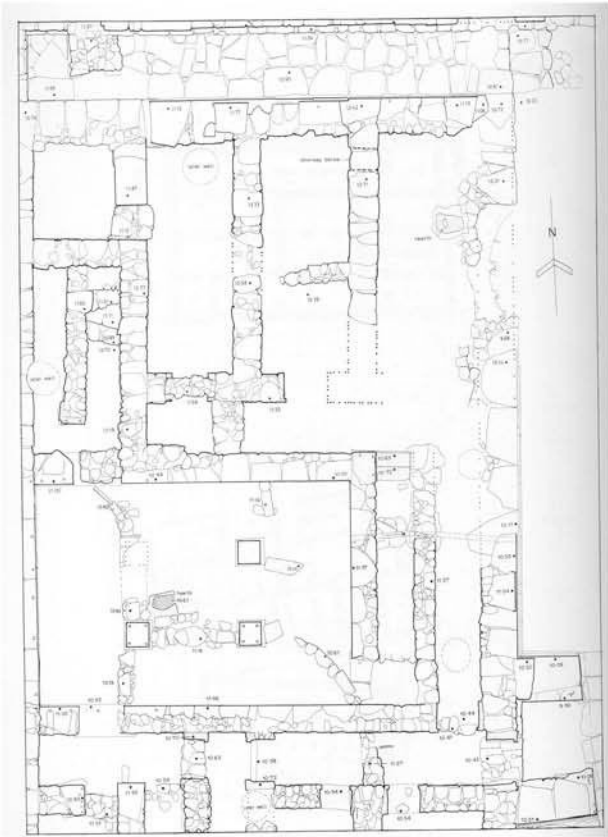


Abb.162 Knossos, Unexplored Mansion, Plan

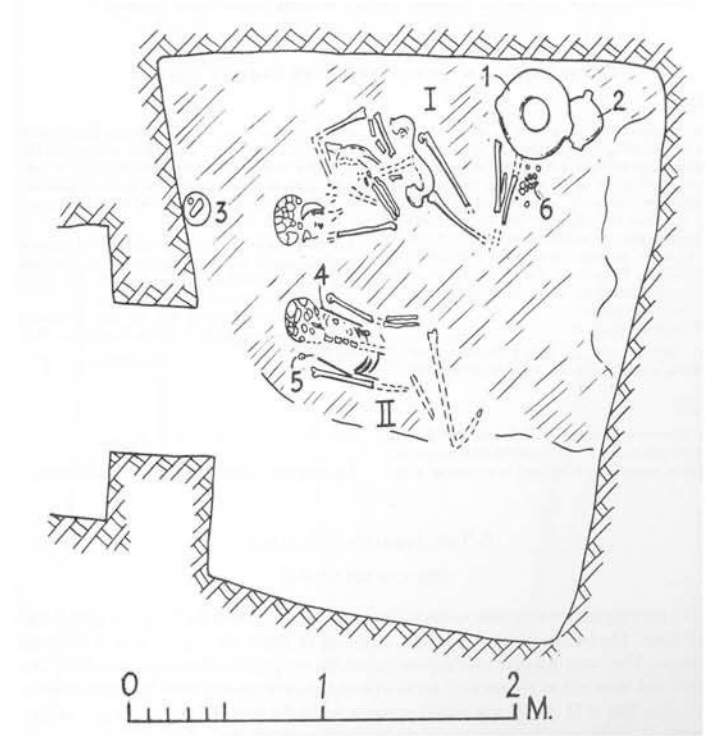


Abb.163 Aghios Ioannis, Grab, Plan

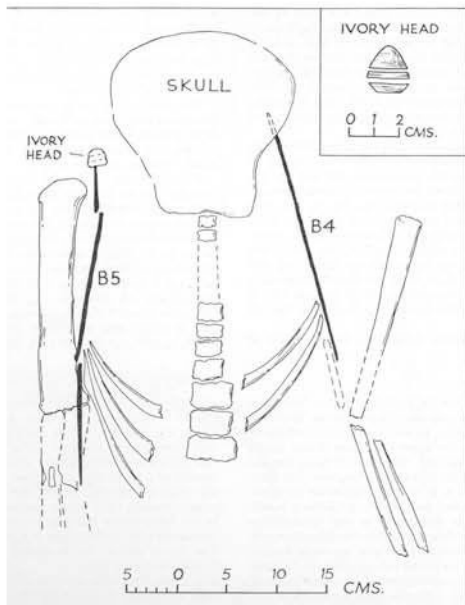


Abb.164 Aghios Ioannis, Grab, Nadeln auf Skelett der Frau



Abb.165 Aghios Ioannis, Grab, Beigaben

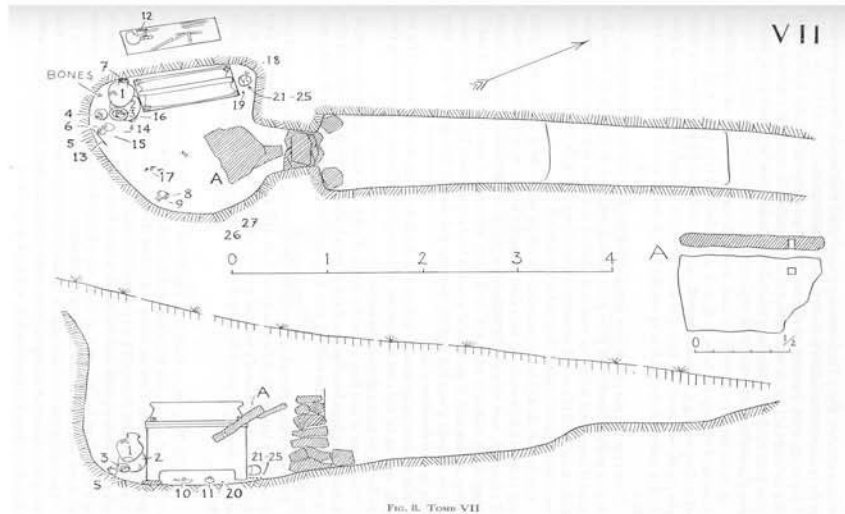


Abb.166 Knossos, Gypsades, Grab VII, Plan und Schnitt

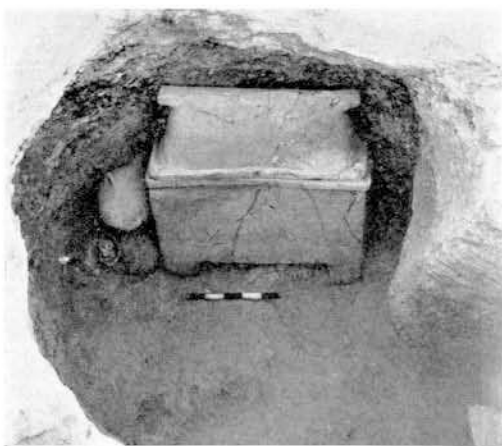


Abb.167 Knossos, Gypsades, Grab VII, Ansicht



Abb.168 Knossos, Gypsades, Grab VII, Lamax

KEPHALA THOLOS TOMB

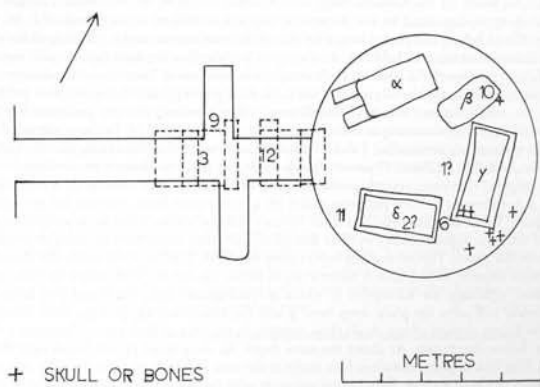


Abb.169 Knossos, Kephala, Grab, Plan

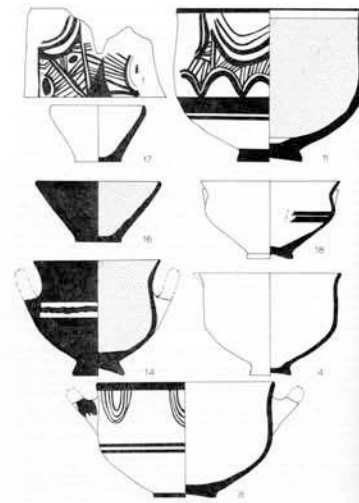
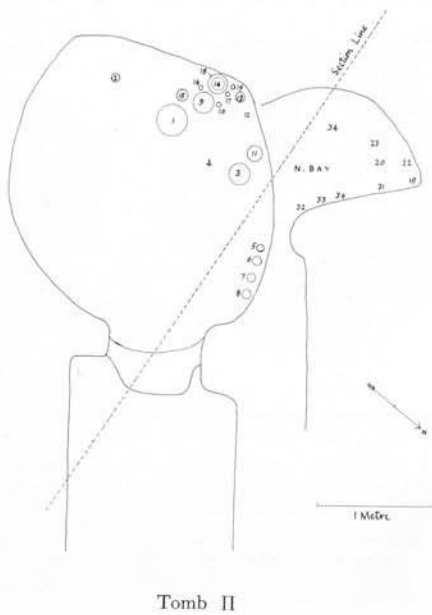


Abb.170 Knossos, Kephala, Keramikbeigaben (Auswahl)



Tomb II

Abb.171 Knossos, Fortetsa, Grab Pi, Plan

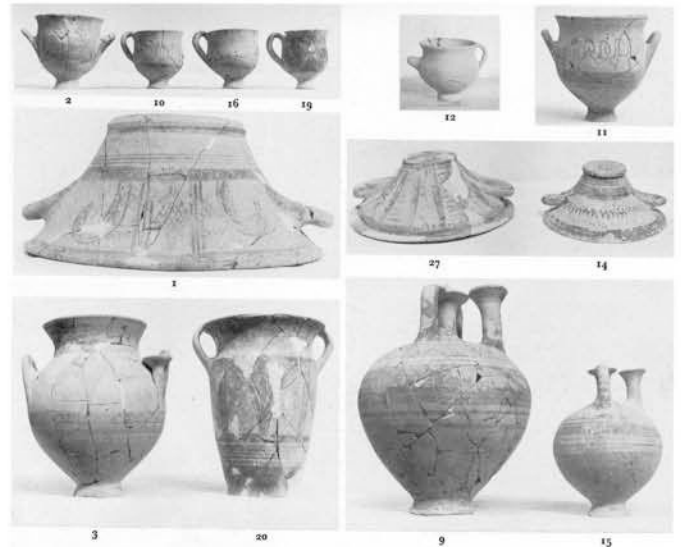


Abb.172 Knossos, Fortetsa, Grab Pi, Keramik

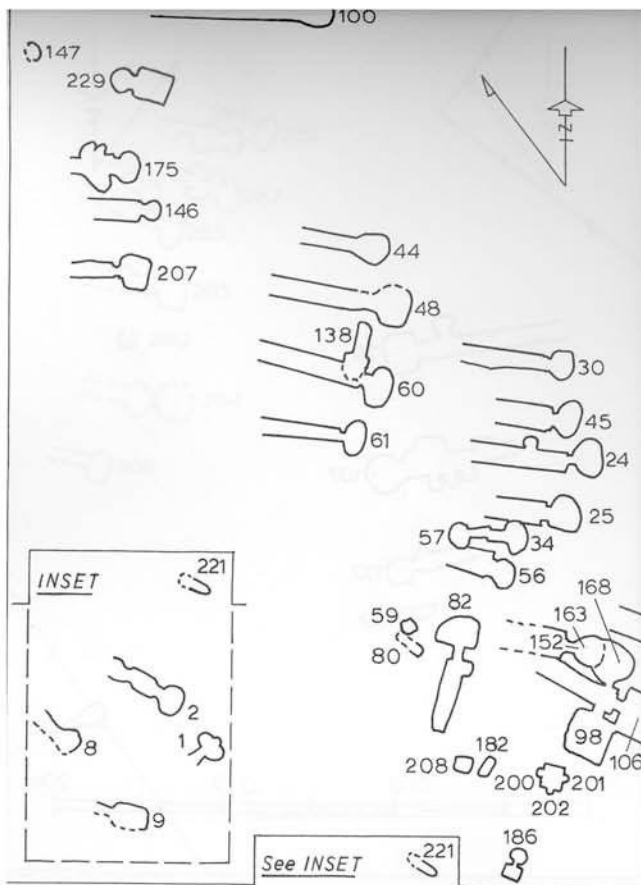


Abb.173 Knossos, Nord-Nekropole, SW-Ecke, Plan

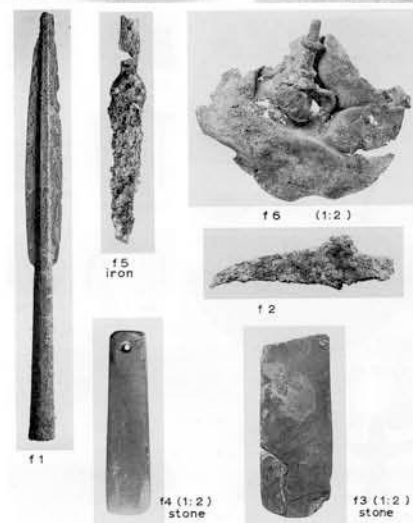


Abb.174a.b Knossos, Nord-Nekropole, Grab 186, Ansicht und Beigaben

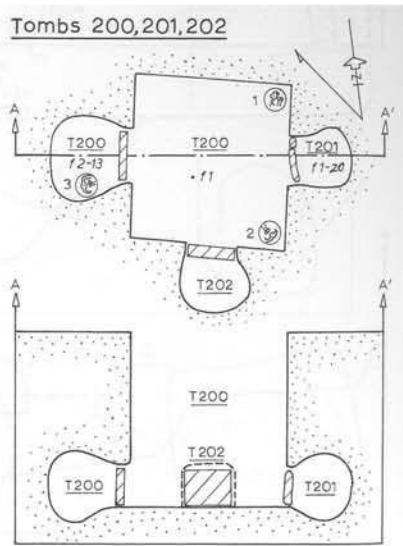


Abb.174c Grab 200+, Plan und Schnitt

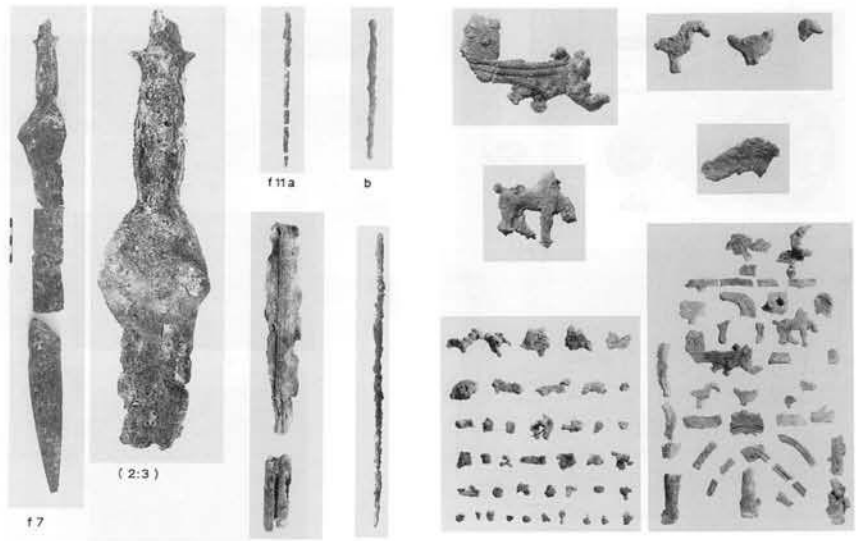


Abb.175 Grab 201, Reste eines Bronzeschwertes und eines Bronzeständers



Abb.176 Knossos, "Spring Chamber" Heiligtum, Hausurne



Abb.177 Phaistos, Palast, Luftbild

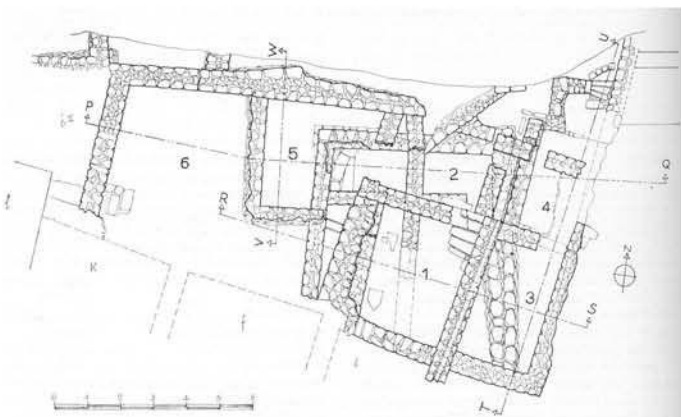


Abb.178 Phaistos, Bereich westlich des W-Hofs, Plan

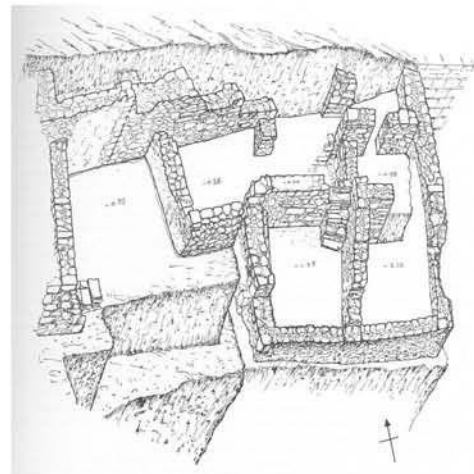


Abb.179 Phaistos, Bereich westlich des W-Hofs, Rekonstruktion

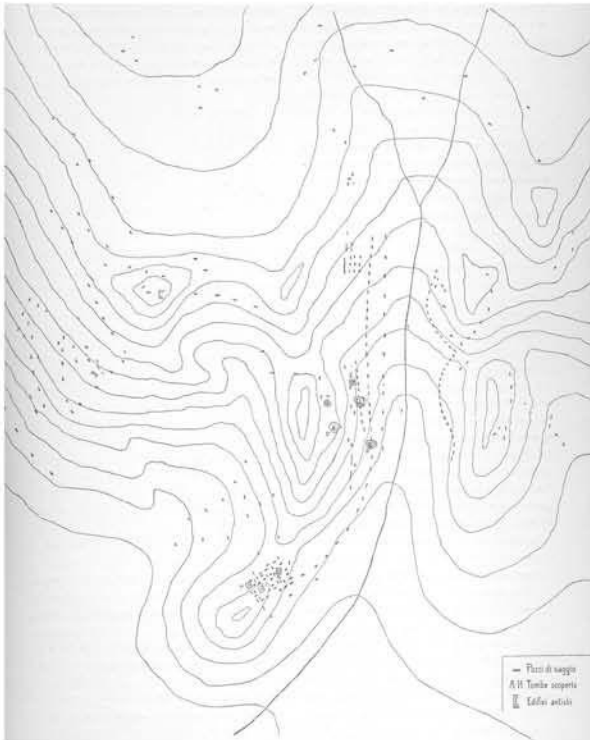


Abb.180 Phaistos, Liliana-Nekropole, Plan

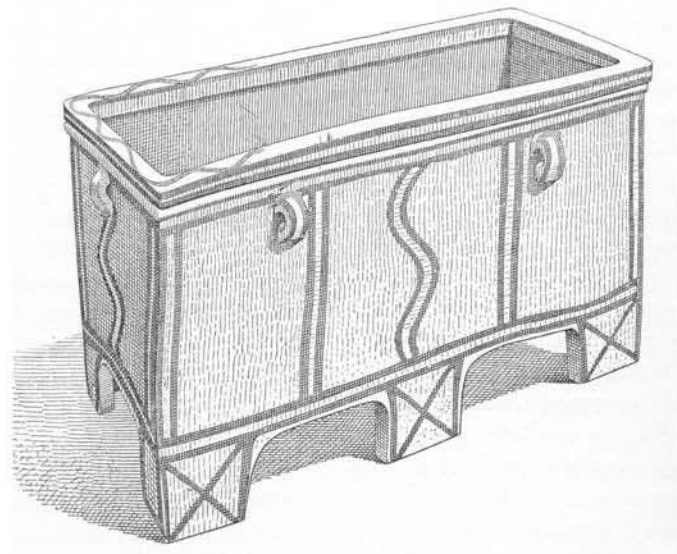


Abb.181 Phaistos, Liliana-Nekropole, Larnax



Abb.182 Phaistos, Liliana-Nekropole,
Perlen aus Glaspaste



Abb.183 Phaistos, Liliana-Nekropole,
Keramikbeigaben



Abb.184 Aghia Triada, Luftbild

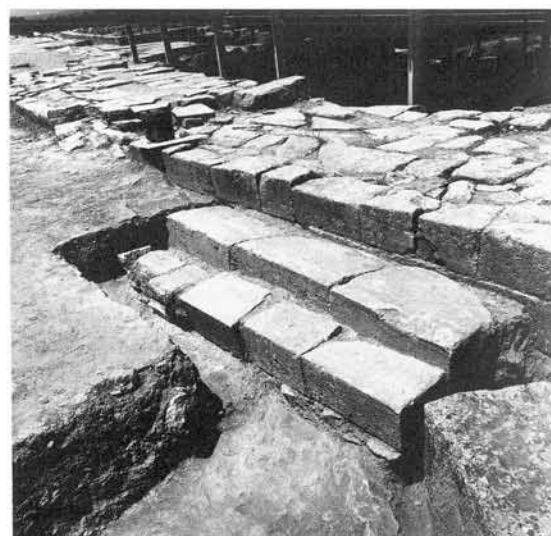


Abb.185 Aghia Triada, Piazzale dei Sacelli,
Tribüne (?)



Abb.186 Aghia Triada, Terrakotta-Stierkopf



Abb.187 Aghia Triada, Terrakotta-Kulthörner



Abb.188 Aghia Triada, Terrakotta-Mischwesen

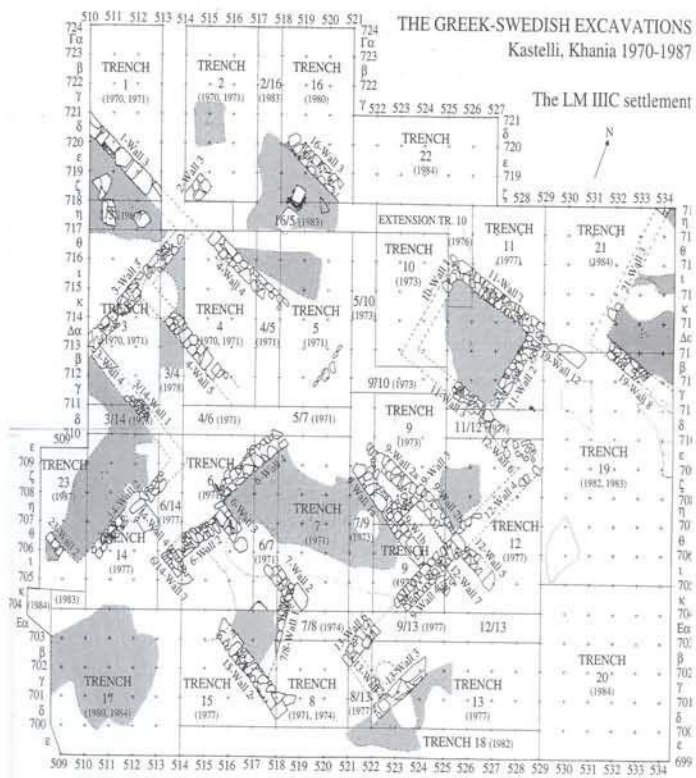


Abb.189 Chania Kastelli, Plan, SM III C

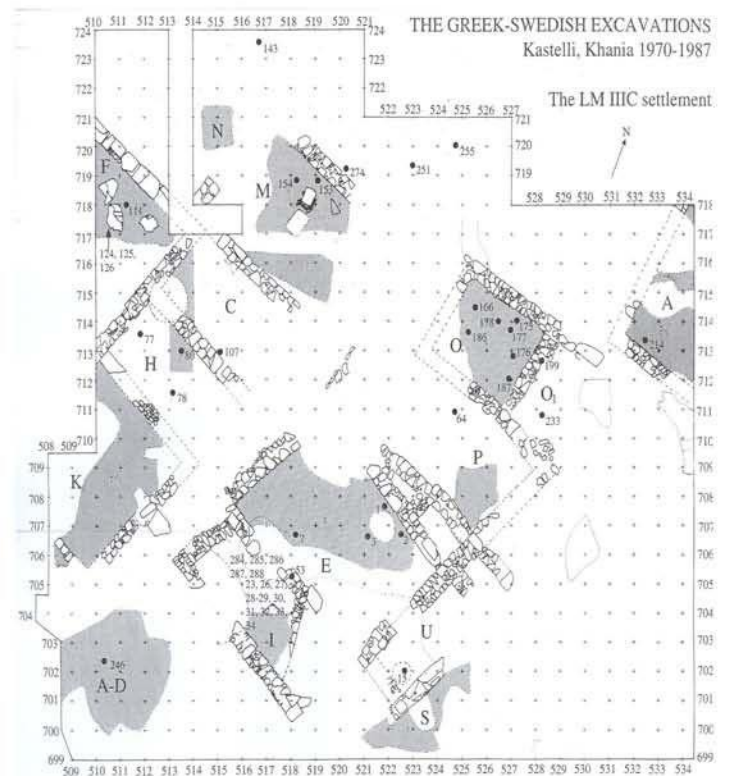


Abb.190 Chania Kastelli, Textilverarbeitung, Plan

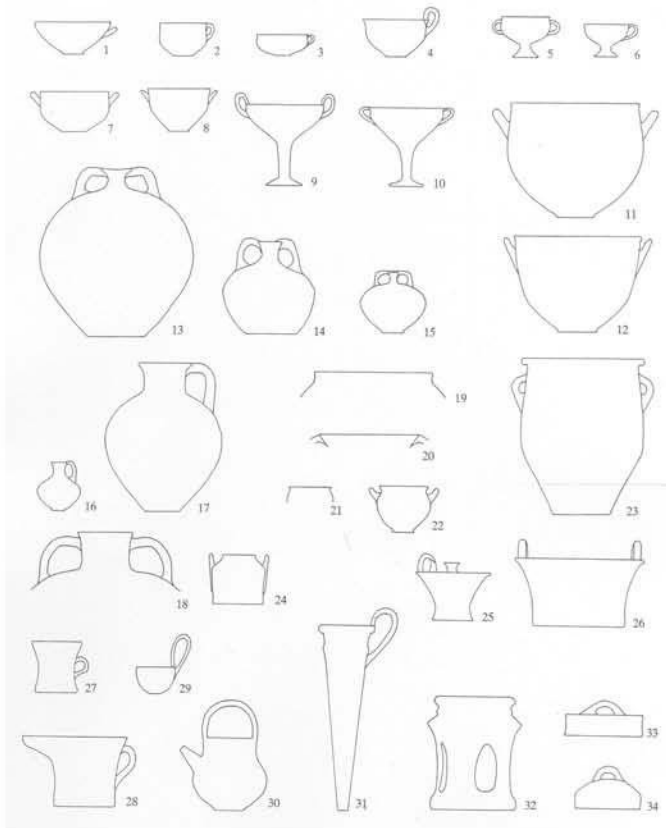


Abb.191 Chania, Feinkeramikformen

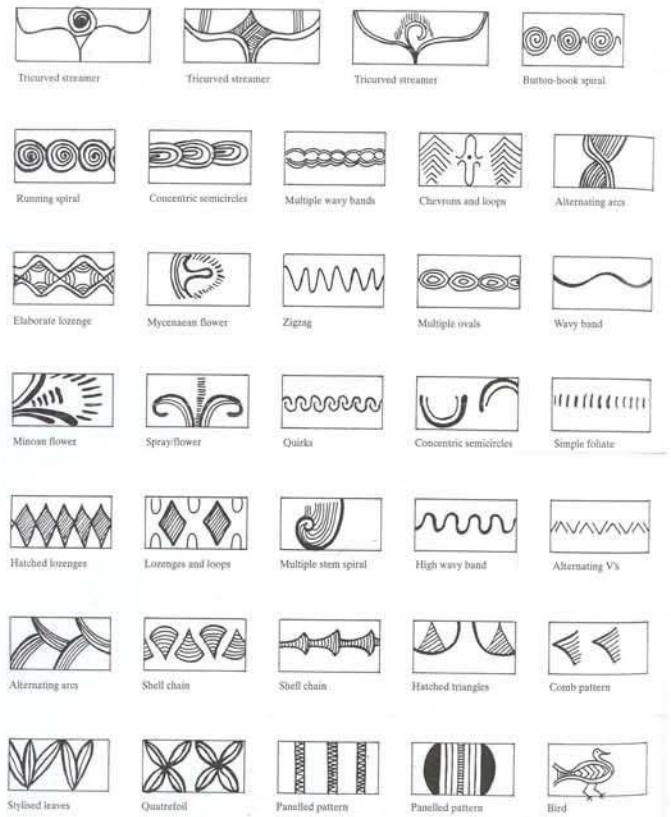


Abb.192 Chania, Dekorelemente

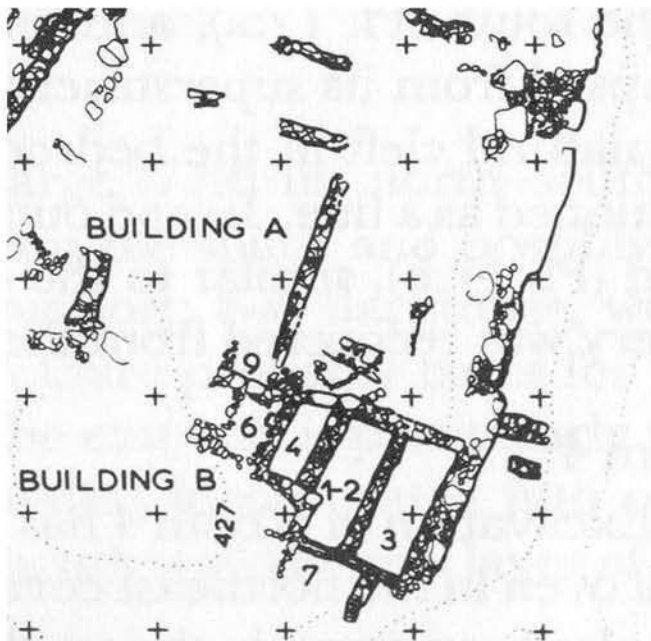


Abb.193 Kavousi Vronda, Geb. A/B, Plan

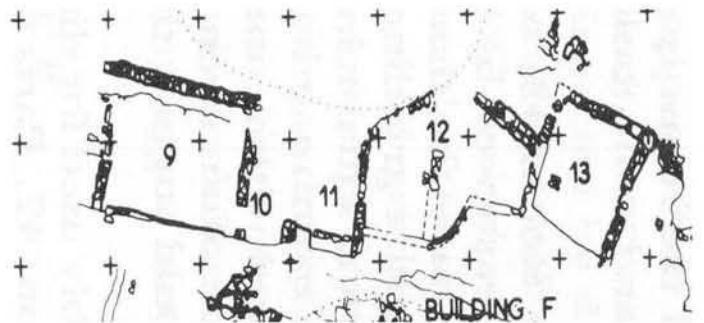


Abb.194 Kavousi Kastro, Geb. 9-13

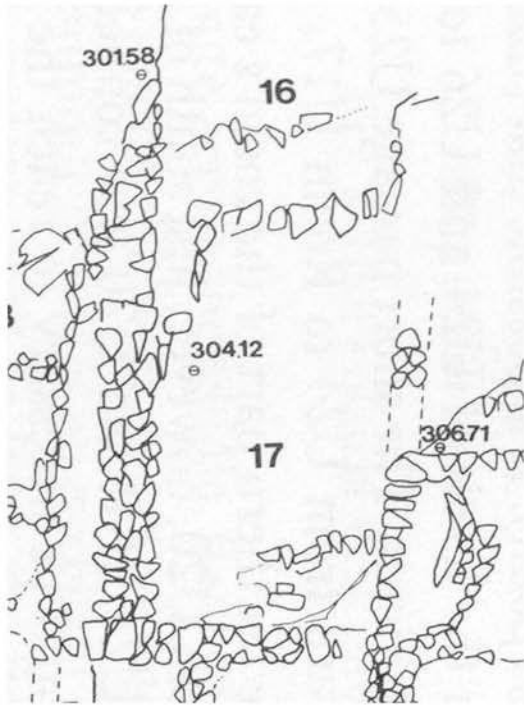


Abb.195 Vrokastro, Geb. 16/17

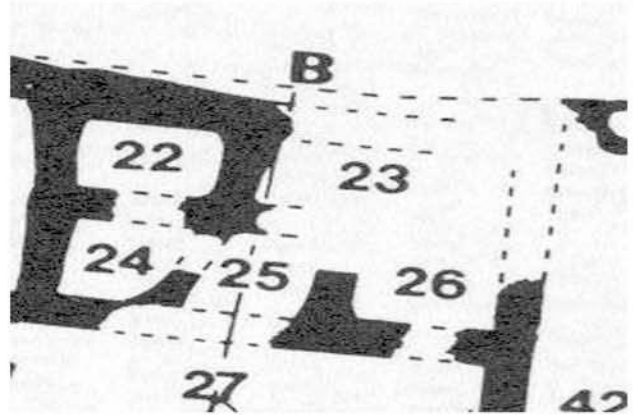


Abb.196 Vrokastro, Geb. 22-26

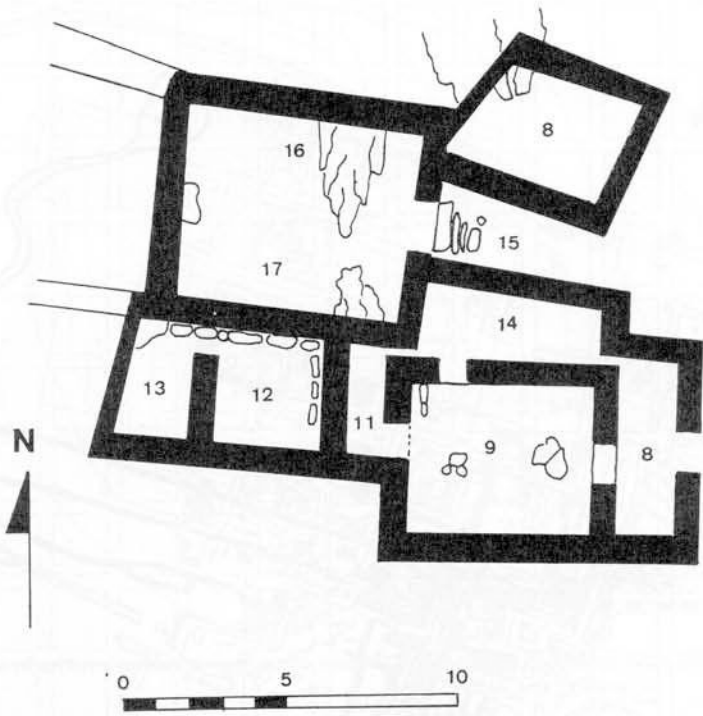


Abb.197 Karphi, "Great House"

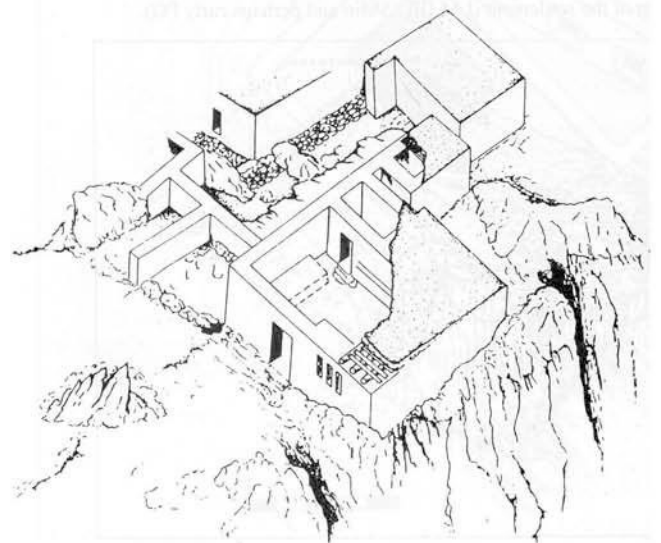


Abb.198 Karphi, "Tempel"

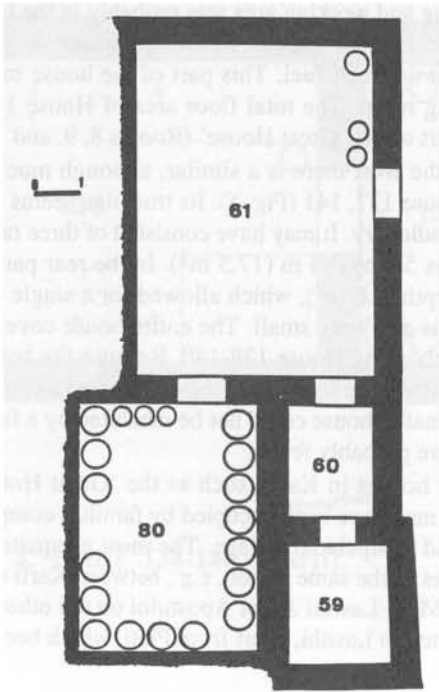


Abb.199 Karphi, "House of the Priest"

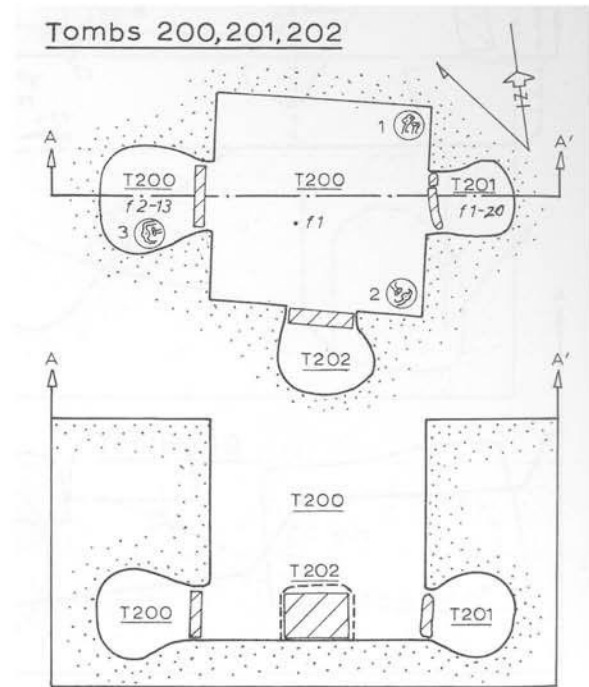


Abb.200 Knossos, Nord-Nekropole, Grab 200+

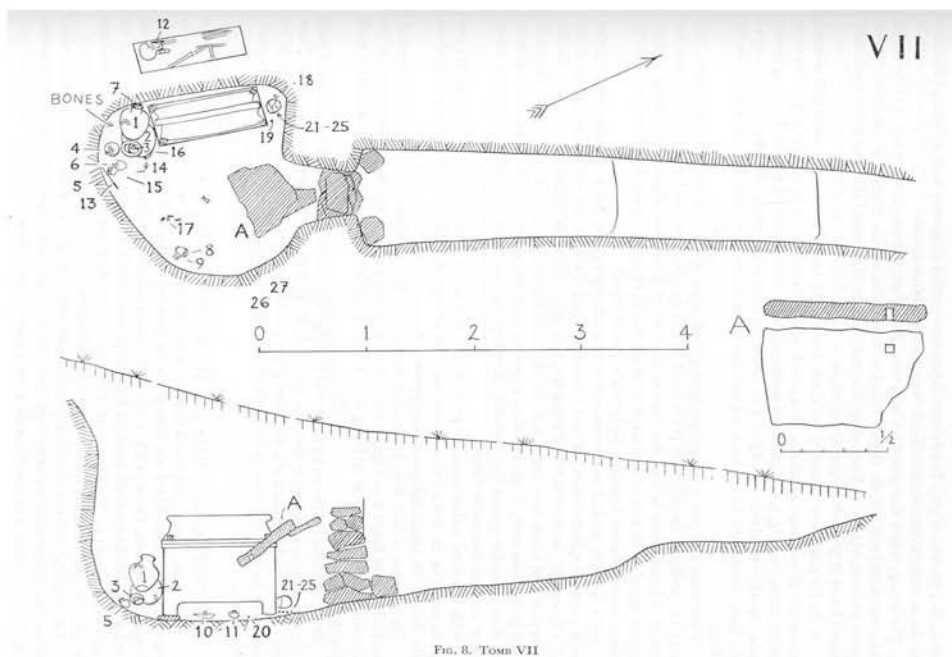


Fig. 8. Tomb VII

Abb.201 Knossos, Gypsades, Grab VII

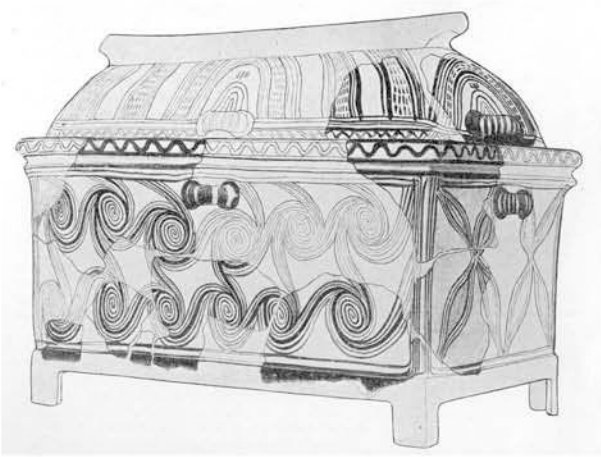


Abb.202 Praisos, Larnax



Abb.203 Istron Vrokastro, Nekropole bei Kopraneš

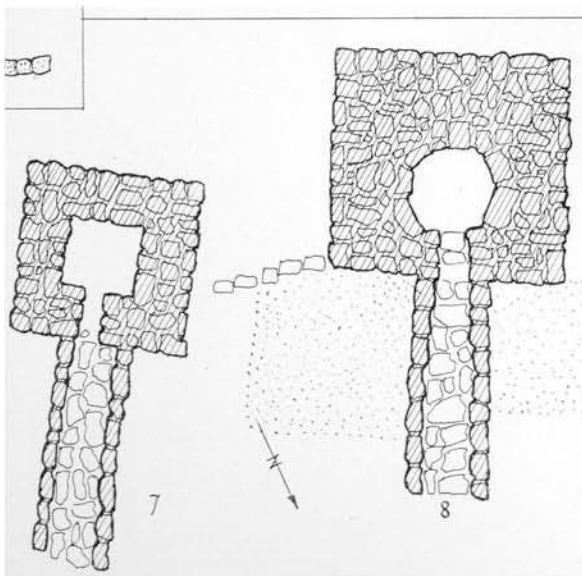


Abb.204 Karphi, Grab 8 in Ta Mnimata (daneben Grab 7)

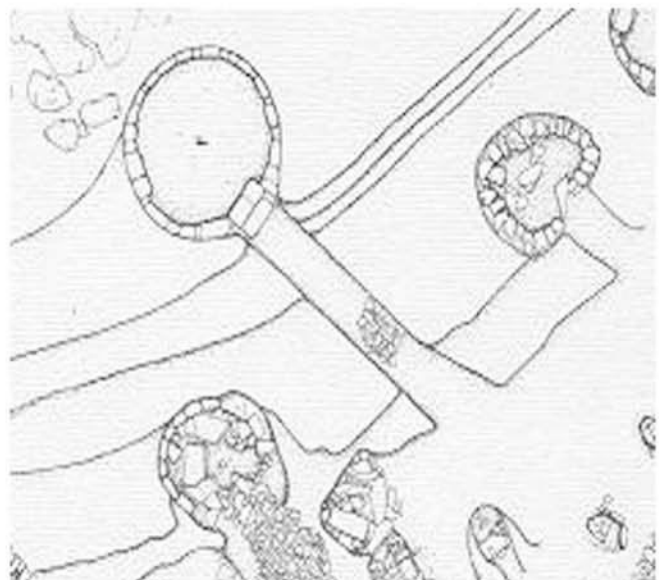


Abb.205 Siderospilia, Grab F