

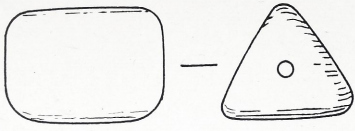
SHAPES AND SIZES OF SEALS

The enlargement of photographs and drawings to allow more detailed study of the seal motifs has two drawbacks, which, in the admirable nature of such fine work, are often forgotten.

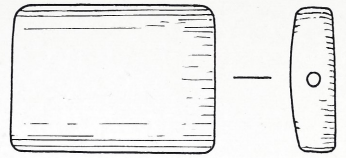
The shape of the seal, which apart from any amuletic significance it may have possessed, in some way determines the character of the motif, and therefore has a double importance: then, under magnification, technical details of the engraving receive a prominence which was never intended, and may detract from stylistic appreciation.

In order to preserve a sense of proportion and reality, outline drawings of some of the more frequently used shapes are here given in a size near to their actual dimension.

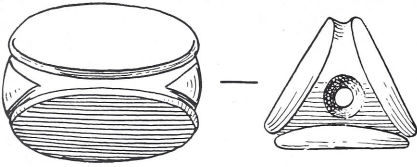
1. Early three sided prism
2. Flattened cylinder or cushion-shape seal
3. Later three sided prism
4. Later cushion-shape seal
5. Foliate-back seal
6. Theriomorph
7. Discoid
8. Glandular shape
9. Amygdaloid
10. Lentoid



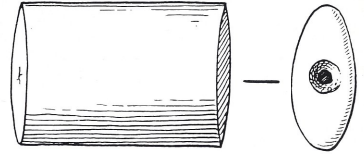
1



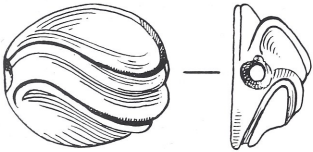
2



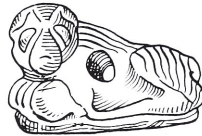
3



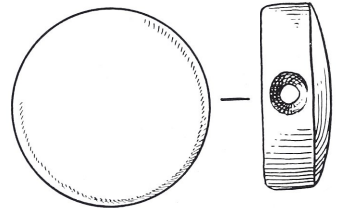
4



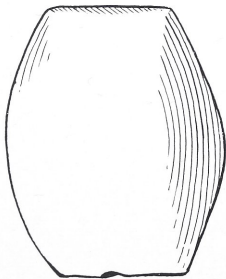
5



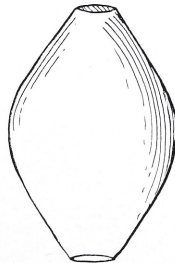
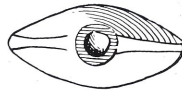
6



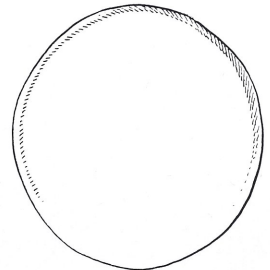
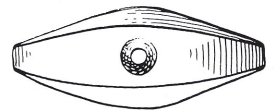
7



8



9



10