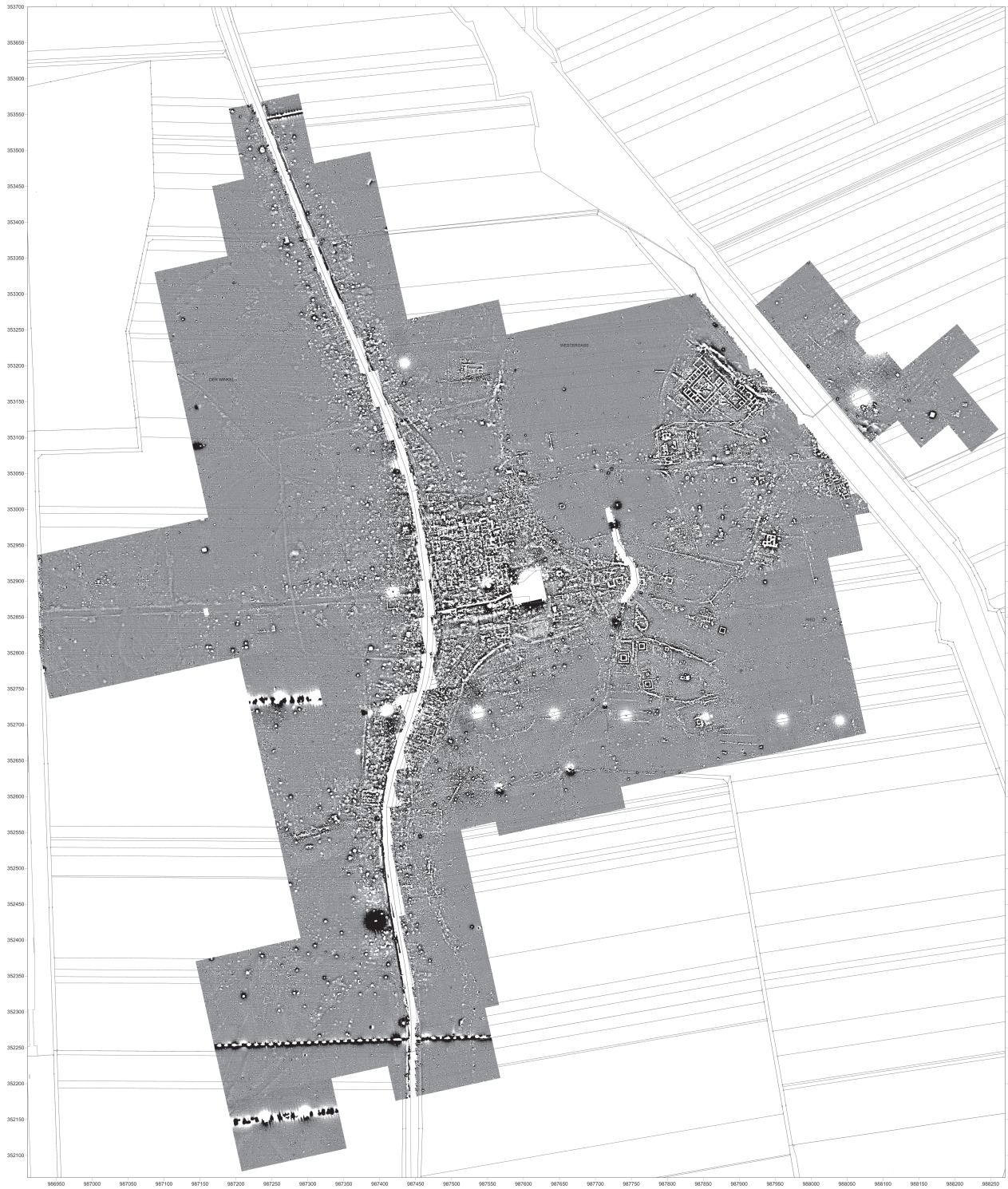


Plan général du site archéologique d'Oedenburg. Ech. 1/4000e (DAO M. Reddé).



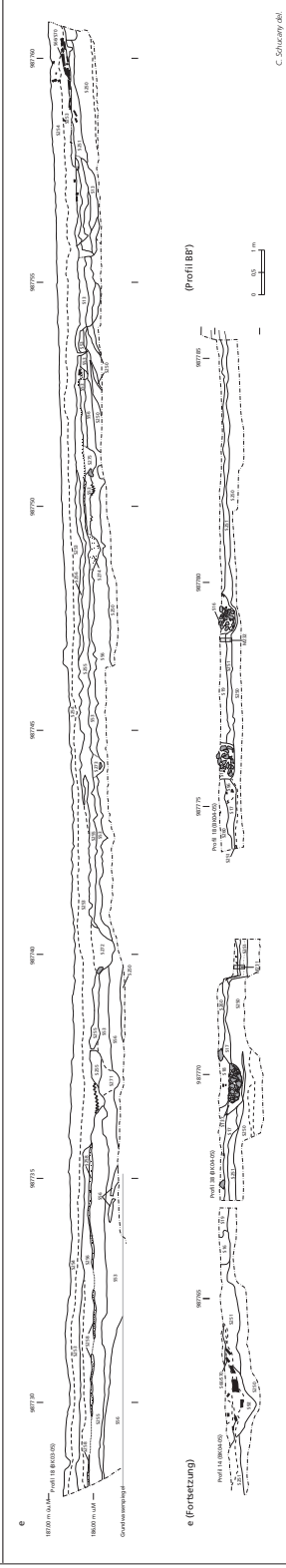
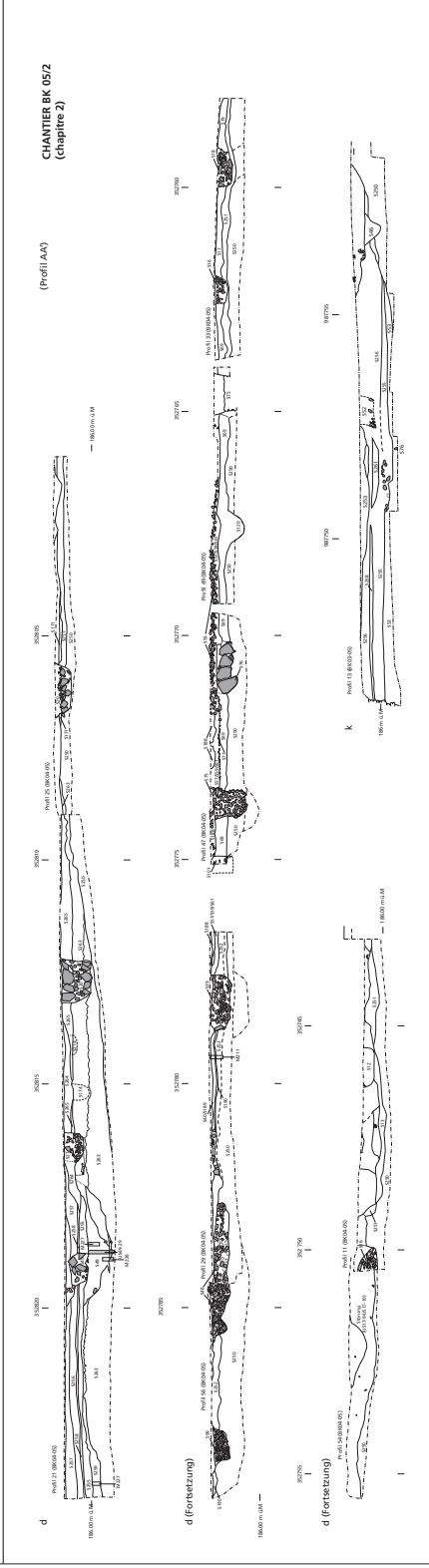
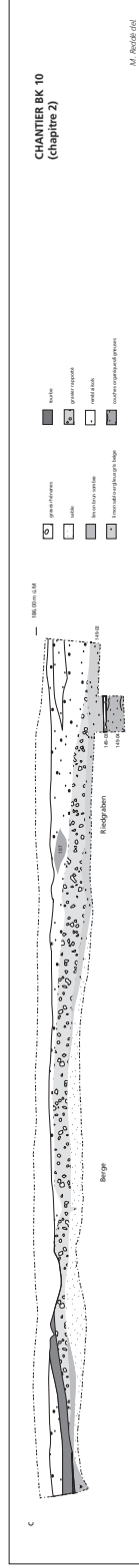
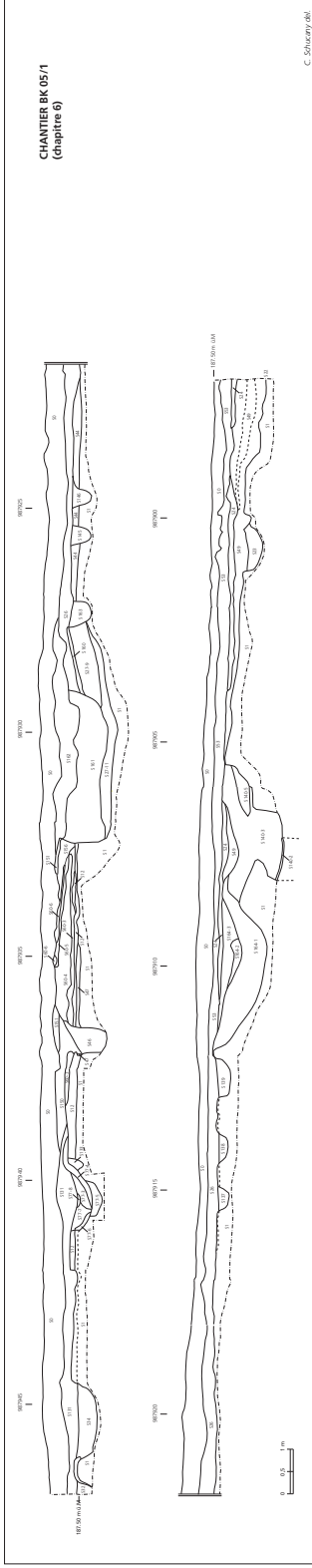
Projekt Oedenburg, Biesheim-Kunheim, Dép. Haut-Rhin - geophysikalische Prospektion 1998 bis 2009

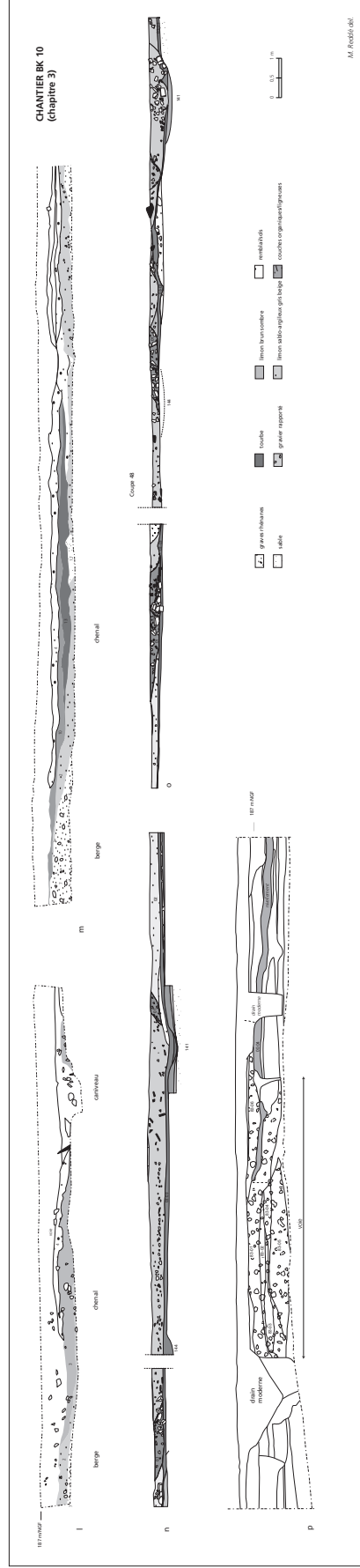
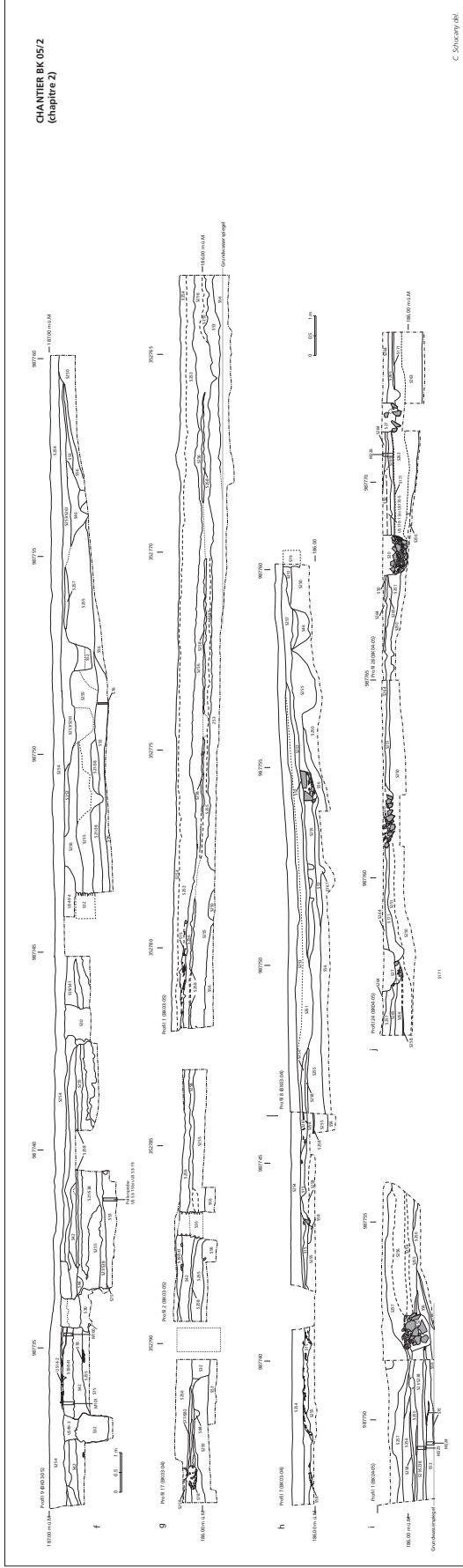
Graustufendarstellung der Geomagnetik (weiß: 7 nano Tesla, schwarz: -7 nT) auf einem digitalen Katasterplan (zur Verfügung gestellt durch M. Reddé), Lambert-Koordinaten.



Plan de prospection géomagnétique du site archéologique d'Oedenburg. Éch. 1/2500e (Posselet & Zickgraf Prospektionen).

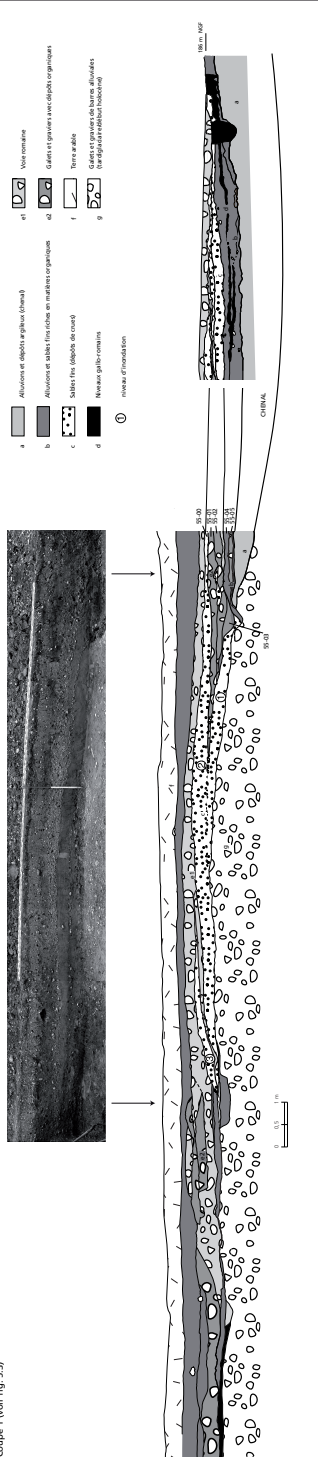




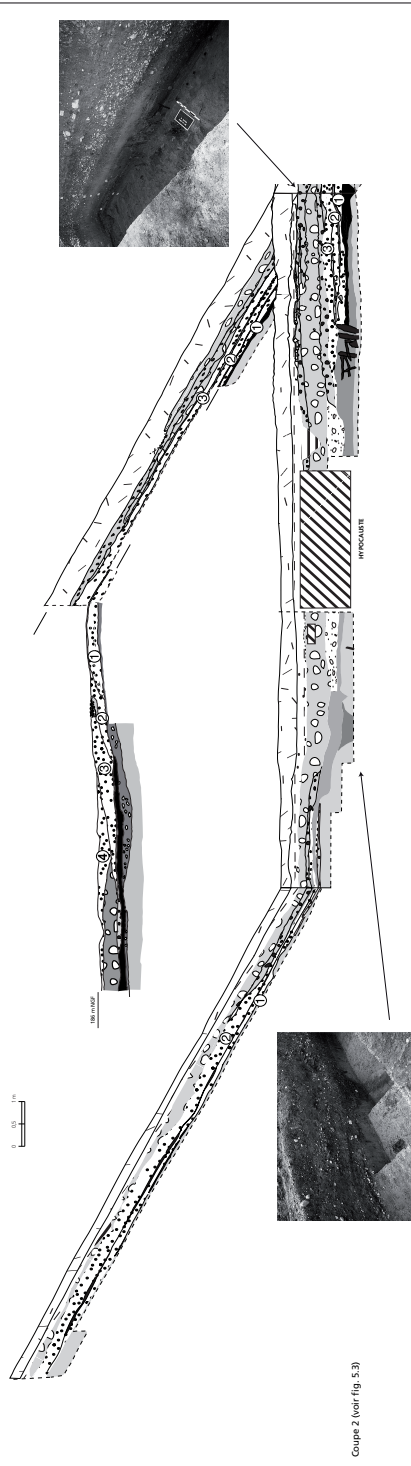




Coupe 1 (voir fig. 5.3)



Coupe 2 (voir fig. 5.3)



Coupe 3 (voir fig. 5.3)

