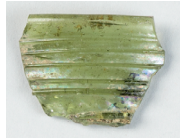


GLASPROBENTAFELN



KHa 2
1127-702



KHa 3
1132-799



KHa 4
1132-804



KHa 5
1168-31



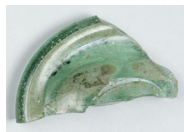
KHa 6
1207-65



KHa 7
1250-484



KHa 8
1973-122



KHa 10
3000-323



KHa 11
3000-323



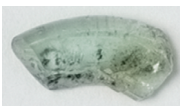
KHa 12
3000-615



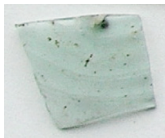
KHa 13
3000-693



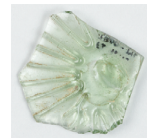
KHa 14
3000-781



KHa 15
3000-783



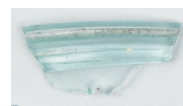
KHa 16
3000-785



KHa 17
3000-796



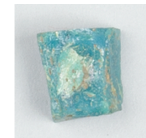
KHa 18
3000-954



KHa 20
3454-70



KHa 21
3457-49



KHa 22
3480-15



KHa 23
3542-120



KHa 24
3542-127



KHa 25
3610-13



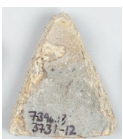
KHa 26
3671-3



KHa 27
3671-3



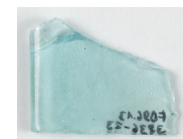
KHa 28
3671-11



KHa 29
3731-12



KHa 30
3797-5



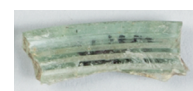
KHa 31
3836-23



KHa 32
3871-15



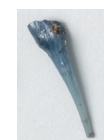
KHa 33
3872-4



KHa 34
3872-26



KHa 35
3872-28



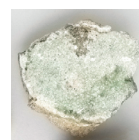
KHa 36
3872-28



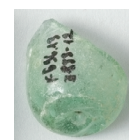
KHa 37
3872-32



KHa 38
3872-39



KHa 39
3872-39



KHa 40
3893-12



KHa 41
3893-12

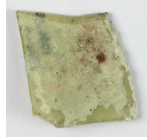
Glasprobentafel 1 Glasproben vom Heumarkt (FB 1996.013), Köln. – (Fotos M. Dodt, A. Wegner/RBA; Tabelle K. Otten).



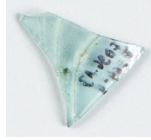
KHa 42
3961-5



KHa 43
3962-8



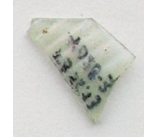
KHa 44
3964-4



KHa 45
3964-4



KHa 46
3964-5



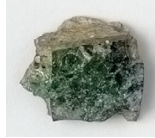
KHa 47
4028-3



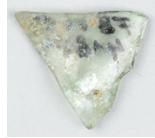
KHa 48
4103-6



KHa 49
4103-6



KHa 50
4122-9



KHa 51
4186-4



KHa 52
4187-22



KHa 53
4187-23



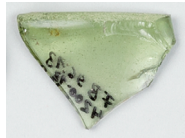
KHa 54
4187-23



KHa 55
4187-29



KHa 56
4188-21



KHa 57
4200-13



KHa 58
4216-45



KHa 60
4244-30



KHa 61
4262-10



KHa 62
4266-20



KHa 63
4266-27



KHa 64
4266-27



KHa 65
4266-47



KHa 66
4266-68



KHa 67
4266-68



KHa 68
4266-68



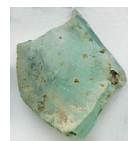
KHa 69
4266-68



KHa 71
4266-99



KHa 72
4266-102



KHa 73
4267-2



KHa 74
4267-2



KHa 75
4267-2



KHa 76
4267-4



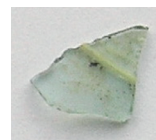
KHa 77
4267-4



KHa 78
4269-13



KHa 79
4277-13

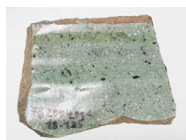


KHa 80
4279-6

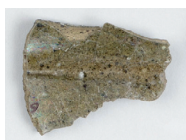


KHa 81
4291-12

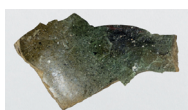
Glasprobentafel 1 Fortsetzung: Glasproben vom Heumarkt (FB 1996.013), Köln. – (Fotos M. Dodt, A. Wegner/RBA; Tabelle K. Otten).



KHa 82
18-125



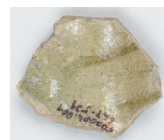
KHa 83
647-557



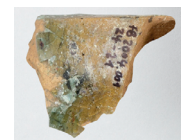
KHa 84
1051-159



KHa 85
18-125



KHa 88
647-539



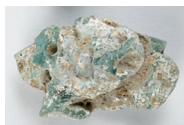
KHa 89
24-21



KHa 92
18-125



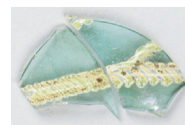
KHa 93
647-539



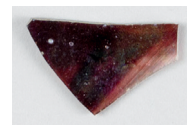
KHa 94
18-105



KHa 96
18-100



KHa 97
2049-29



KHa 98
2049-29



KHa 99
18-117



KHa 100
18-117



KHa 101
18-117



KHa 102
18-117



KHa 103
2031-18



KHa 104
24-21



KHa 105
569-1790



KHa 106
1051-50



KHa 107
18-94



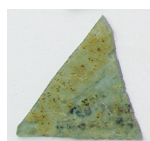
KHa 108
569-1312



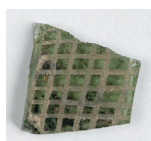
KHa 109
569-1312



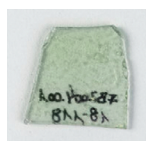
KHa 110
2031-18



KHa 111
359-2090

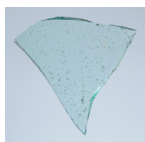


KHa 112
1336-53

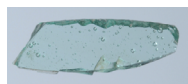


KHa 113
18-118

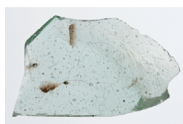
Glasprobentafel 2 Glasproben vom Kurt-Hackenbergr-Platz (FB 2004.001), K6ln. – (Fotos M. Dodt, A. Wegner/RBA; Tabelle K. Otten).



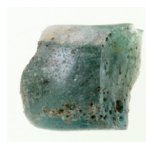
KHa 114
Sylt-Tinum,
ALSH, SH 2007-
607.179



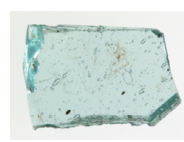
KHa 115
Sylt-Tinum,
ALSH, SH 2007-
607.180



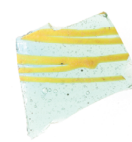
KHa 116
Sylt-Wenningstedt,
ALSH, SH 2013-
704.12



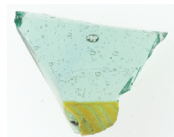
KHa 117
Föhr-Nieblum,
ALSH, SH 2016-
17.66



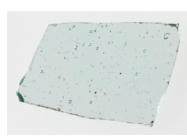
KHa 118
Föhr-Nieblum,
ALSH, SH 2016-
17.113



KHa 119
Föhr-Witsum,
ALSH, SH 2016-
137.186



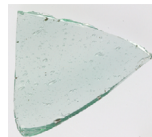
KHa 120
Föhr-Witsum,
ALSH, SH 2016-
137.357



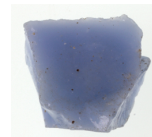
KHa 121
Föhr-Witsum,
ALSH, SH 2016-
137.364



KHa 122
Föhr-Witsum,
ALSH, SH 2016-
137.385



KHa 123
Föhr-Witsum,
ALSH, SH 2016-
137.492



KHa 124
Föhr-Witsum,
ALSH, SH 2016-
137.375



KHa 125
Rostock-Dierkow,
ALM 2013/467,
1263



KHa 126
Rostock-Dierkow,
ALM 2013/467,
1423



KHa 127
Rostock-Dierkow,
ALM 2013/467,
1817



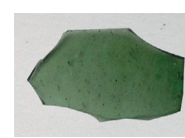
KHa 128
Rostock-Dierkow,
ALM 2013/467,
1412



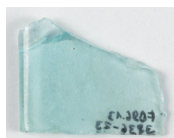
KHa 129
Rostock-Dierkow,
ALM 2015/281,
1395



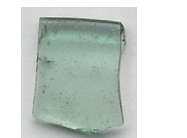
KHa 130.1
Rostock-Dierkow,
ALM 2015/281,
1481



KHa 130.2
Rostock-Dierkow,
ALM 2015/281,
1481



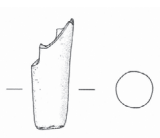
KHa 131
Rostock-Dierkow,
ALM 2016/1387,
1285



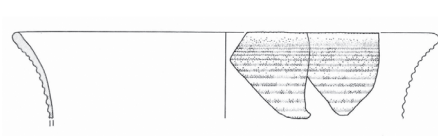
KHa 132
Rostock-Dierkow,
ALM 2016/1387,
1277



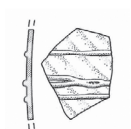
KHa 133
Rostock-Dierkow,
ALM 2016/1387,
1190



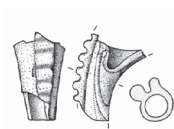
KHa 134
Hollingstedt,
Brandt 2012, Abb.
10,1; Fundnr. 367



KHa 135
Amrum,
Arch. Korrb. 2002, 121
Abb. 4,2; Fundnr. G8



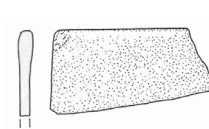
KHa 136
Amrum,
Arch. Korrb. 2002, 121
Abb. 4,5; Fundnr. G13



KHa 137
Amrum,
Arch. Korrb. 2002, 121
Abb. 4,6; Fundnr. G14

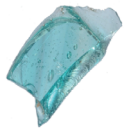


KHa 138
Amrum,
Arch. Korrb. 2002, 121
Abb. 4,9; Fundnr. G15

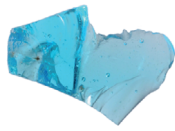


KHa 139
Amrum,
Arch. Korrb. 2002, 121
Abb. 4,12; Fundnr. G20

Glasprobentafel 3 Glasproben von der Nord- und Ostsee. – (Fotos M. Dodt, B. S. Majchczack; Tabelle K. Otten).



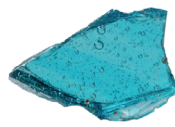
KHa 140
Sylt-Tinum, ALSH,
SH 2007-607.140



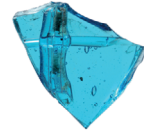
KHa 141
Sylt-Tinum, ALSH,
SH 2007-607.141



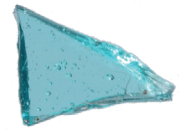
KHa 142
Sylt-Tinum, ALSH,
SH 2007-607.149



KHa 143
Sylt-Tinum, ALSH,
SH 2007-607.154



KHa 144
Sylt-Tinum, ALSH,
SH 2007-607.157



KHa 145
Sylt-Tinum, ALSH,
SH 2007-607.159



KHa 146
Sylt-Tinum, ALSH,
SH 2007-607.161



KHa 147
Sylt-Tinum, ALSH,
SH 2007-607.165



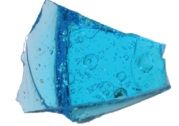
KHa 148
Sylt-Tinum, ALSH,
SH 2007-607.166



KHa 149
Sylt-Tinum, ALSH,
SH 2007-607.169



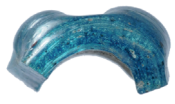
KHa 150
Sylt-Tinum, ALSH,
SH 2007-607.170



KHa 151
Sylt-Tinum, ALSH,
SH 2007-607.172



KHa 152
Sylt-Tinum, ALSH,
SH 2007-607.182



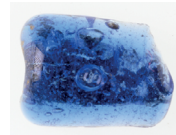
KHa 153
Sylt-Tinum, ALSH,
SH 2007-607.193



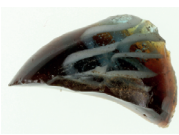
KHa 154
Sylt-Tinum, ALSH,
SH 2007-607.197



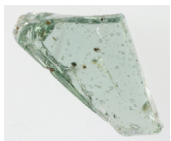
KHa 155
Sylt-Tinum, ALSH,
SH 2007-607.199



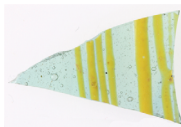
KHa 156
Föhr-Witsum, ALSH,
SH 2016-137.188



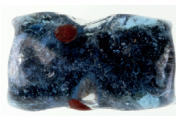
KHa 157
Föhr-Witsum, ALSH,
SH 2016-137.313



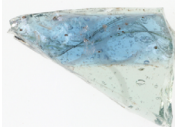
KHa 158
Föhr-Witsum, ALSH,
SH 2016-137.356



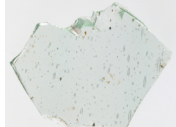
KHa 159
Föhr-Witsum, ALSH,
SH 2016-137.363



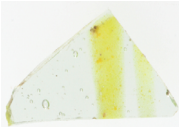
KHa 160
Föhr-Witsum, ALSH,
SH 2016-137.376



KHa 161
Föhr-Witsum, ALSH,
SH 2016-137.377



KHa 162
Föhr-Witsum, ALSH,
SH 2016-137.500



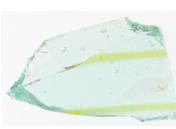
KHa 163
Föhr-Witsum, ALSH,
SH 2016-137.515



KHa 164
Föhr-Witsum, ALSH,
SH 2016-137.535



KHa 165
Föhr-Witsum, ALSH,
SH 2016-137.536



KHa 166
Föhr-Witsum, ALSH,
SH 2016-137.568

Glasprobentafel 4 Glasproben von der Nordsee. – (Fotos B. S. Majchczack; Tabelle K. Otten).



KHa 167
Köln, Heumarkt,
2454-6



KHa 168
Köln, St. Martin,
RGM Inv. 74,4467



KHa 169
Köln, St. Martin,
RGM Inv. 74,5393



KHa 170
Köln, St. Martin,
RGM Inv. 74,3354



KHa 171
Köln, St. Martin,
RGM Inv. 74,5284.2



KHa 172
Köln, St. Martin,
RGM Inv. 76,1247.10



KHa 173
Köln, St. Martin,
RGM Inv. 74,2042



KHa 174
Köln, Bechergasse,
121-50



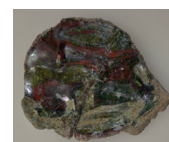
KHa 175
Köln, Philharmonie,
RGM Inv. 79,1611



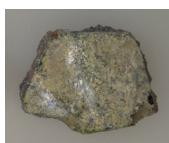
KHa 176
Köln, Antoniter-
straße, 302-13



KHa 177
Trier, Barbarather-
men, RLMT, PM
10610



KHa 178
Trier, Barbara-Ufer,
1991,15a



KHa 179
Trier, Barbara-Ufer,
1991,15b



KHa 180
Trier, Barbarathermen,
RLMT, EV 2003,217,
FNr. 7



KHa 181
Trier, Barbarathermen,
RLMT, EV 2003,217,
FNr. 13



KHa 182
Trier, Barbarathermen,
RLMT, EV 2003,
FNr. 13



KHa 183
Bonn, Schwarzrheindorf,
RGZM Mainz, Inv. O.2690



KHa 184
Pfalz Ingelheim,
LM Mainz, IH-K3, G1232



KHa 185
Pfalz Ingelheim,
LM Mainz, IH-K3, G1254



KHa 186
Pfalz Ingelheim,
LM Mainz, IH-K8,
W320



KHa 187
Pfalz Ingelheim,
LM Mainz, IH-K8,
W334



KHa 188
Föhr-Nieblum,
ALSH, Goting
NF 152



KHa 189
Föhr-Nieblum,
ALSH, Goting
NF 152



KHa 190
Föhr-Nieblum,
ALSH, Goting
NF 152



KHa 191
Cuxhaven,
Altenwalde,
FSt-Nr. 60



KHa 192
Cuxhaven,
Altenwalde,
FSt-Nr. 60



KHa 194
Köln-Junkersdorf,
Grab 218,
RGM Inv. 51,463

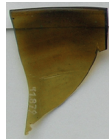


KHa 195
Köln-Junkersdorf,
Grab 220,
RGM Inv. 51,473

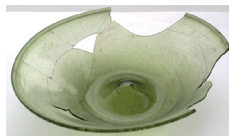
Glasprobentafel 5 Verschiedene Glasproben. – (Fotos KHa 177-182, RLMT; alle weiteren Fotos M. Dodt, B. S. Majchczack; Tabelle K. Otten).



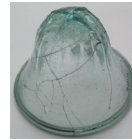
KHa 196
Köln-Junkersdorf,
Grab 232,
RGM Inv. 51,511



KHa 197
Köln-Junkersdorf,
Grab 419,
RGM Inv. 51,879



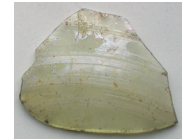
KHa 198
Köln-Junkersdorf,
Grab 164,
RGM Inv. 51,312



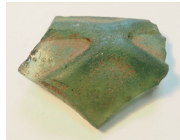
KHa 199
Köln-Junkersdorf,
Grab 510,
RGM Inv. 51,1049



KHa 200
Köln, Am Domhof,
FB 2013.010
FZ 52861



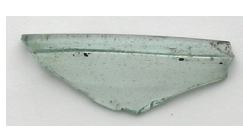
KHa 201
Köln, Am Domhof,
FB 2013.010
FZ 52816



KHa 202
Groß Strömkend-
dorf, ALM 2016/
1112, 34



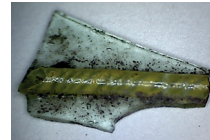
KHa 203
Groß Strömkend-
dorf, ALM 2016/
1109, 131



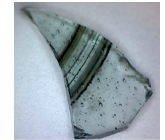
KHa 204
Groß Strömkend-
dorf, ALM 2017/458,5



KHa 205
Groß Strömkend-
dorf, ALM 2017/
458,9



KHa 206
Groß Strömkend-
dorf, ALM 2017/458,7



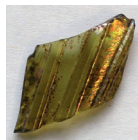
KHa 207
Groß Strömkend-
dorf, ALM 2017/
458,2



KHa 208
Groß Strömkend-
dorf, ALM
2017/458,6



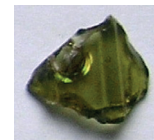
KHa 209
Paderborn,
Königstraße,
Mus. KpfP



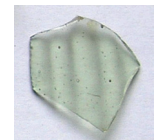
KHa 210
Paderborn,
Königstraße,
Mus. KpfP



KHa 211
Paderborn,
Königstraße,
Mus. KpfP



KHa 212
Paderborn-Bal-
horn, Mus. KpfP,
FNr. 1975



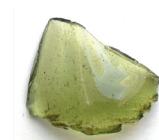
KHa 213
Paderborn-
Balhorn, Mus.
KpfP, FNr. 1623



KHa 214
Paderborn-Balhorn,
Mus. KpfP, FNr. 375



KHa 215
Beckum, Grab 35,
LM Münster,
Inv.-Jahr 1963



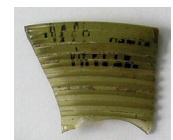
KHa 216
Rheine-Mesum,
LM Münster,
Mü.kz. 3711,27



KHa 217
Kamen-Westick,
Mus. Hamm,
12376/1



KHa 218
Kamen-Westick,
Mus. Hamm,
12376/3



KHa 219
Kamen-Westick,
Mus. Hamm,
12377/1



KHa 220
Kamen-Westick,
Mus. Hamm,
12382/1



KHa 221
Kamen-Westick,
Mus. Hamm,
12394/1



KHa 222
Kamen-Westick,
Mus. Hamm,
12397/5



KHa 223
Berlin-Britz,
Mus. VFG Berlin,
Inv.-Nr. If 16420



KHa 224
Andernach,
Mus. VFG Berlin,
Inv.-Nr. li 2282

Glasprobentafel 5 Fortsetzung: Verschiedene Glasproben. – (Fotos M. Dodt, B. S. Majchczack; Tabelle K. Otten).



KHa 225
Kobern,
Mus. VFG Berlin,
Inv.-Nr. li 661



KHa 226
Worms
Mus. VFG Berlin,
Inv.-Nr. llc 443



KHa 227
Bonn-Bechlinghoven,
Ov 07/108,
St. 5-39



KHa 228
Bonn-Bechlinghoven,
Ov 07/108,
St. 120-23



KHa 230
Mayen, »auf dem Glacis«
(1986/87), Fst. 86/23,
FZ 406-6



KHa 231
Mayen, »auf dem Glacis«
(1986/87), Fst. 87/1,
FZ 476-3



KHa 232
Mayen, »auf dem
Glacis« (1986/87),
Fst. 87/1, FZ 476(c)



KHa 233
Mayen, »auf dem
Glacis« (1986/87),
Fst. 87/9, FZ 513-7



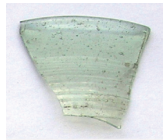
KHa 234
Duisburg-Serm,
StA Duisburg, NI
2014/3032,1-2



KHa 235
Duisburg-Serm,
StA Duisburg, NI
2014/3032,1-2



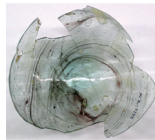
KHa 236
Köln-Porz, RLMB,
Inv.-Nr. 74.4106b



KHa 237
Köln-Porz, RLMB,
Inv.-Nr. 74.4106a



KHa 238
Kamen-Westick,
AKZ 4411,4



KHa 239
Frankfurt-Nieder-
erlenbach, Mus. VFG
Frankfurt, 1986,
03.007.004 u. .016



KHa 240
Frankfurt-Har-
heim, Grab 59,
Mus. VFG
Frankfurt



KHa 241
Frankfurt-Har-
heim, Grab 73,
Mus. VFG
Frankfurt



KHa 242
Karlbürg,
1994, AAK,
Stadtmuseum
Karlstadt



KHa 243
Karlbürg, Wüstung, 1991, AAK,
Stadtmuseum Karlstadt



KHa 245
Veitsberg,
AStM FZ 25752



KHa 247
Veitsberg,
AStM FZ 25751



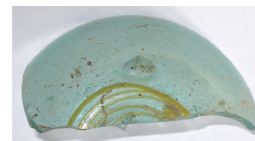
KHa 248
Enheim, Grab 37,
AStM 2006,4032h,
FZ 59298



KHa 249
Segnitz, Grab 38,
AStM FZ 59301



KHa 251
Eußenheim,
Grab 65, AStM
2000_4051_6



KHa 252
Bonn-Innenstadt,
RLMB, E-Nr. 2010/ 32,
FN 477



KHa 253
Bonn-Schwarz-
rheindorf, RLMB,
Inv.-Nr. 43.77

Glasprobentafel 6 Verschiedene Glasproben. – (Foto KHa 240, U. von Freeden; alle weiteren Fotos M. Dodt; Tabelle K. Otten).



KHa 254
Bonn-Schwarz-
rheindorf, RLMB,
Inv.-Nr. 62.756



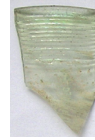
KHa 255
Wiesbaden, Dotz-
heimerstraße,
SNA 13.468



KHa 256
Wiesbaden, Dotz-
heimerstraße,
SNA 16.81b



KHa 257
Wiesbaden, Dotz-
heimerstraße,
SNA 16.74



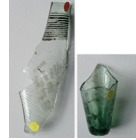
KHa 258
Krefeld-Gellep, Kas-
tell, Mus. Burg Linn,
Inv.-Nr. 84/205



KHa 259
Krefeld-Fischeln,
Grabung 2012,
Grubenhaus St. 1



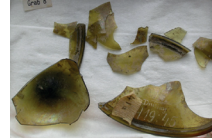
KHa 260
Krefeld-Fischeln,
Grabung 2012,
Grubenhaus St. 1



KHa 261
Duisburg-Meiderich,
Mus. Duisburg



KHa 262
Duisburg-Bruckhau-
sen, StA Duisburg,
NI 2009-113, FZ 84



KHa 263
Duisburg-Alsum,
Grab 8, Mus. Duis-
burg, Inv. H19:45



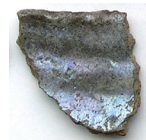
KHa 264
Kölner Dom,
Domgrabung,
DGF 7/5905



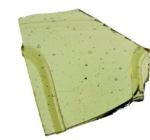
KHa 265
Kölner Dom,
Domgrabung,
DGF 5/52994



KHa 266
Slg. Diergardt,
RGM Inv. 34,455



KHa 267
Köln, St. Kolumba,
FB 74.03,
RGM Inv. 74,8082



KHa 268
Amrum-Norddorf,
ALSH, NF LA 127



KHa 269
Amrum-Norddorf,
ALSH, NF LA 127,



KHa 272
Essen-Werden, Stadt-
archäologie Essen,
NI 2010/1025



KHa 274
Köln, St. Pantaleon,
RGM Inv. 59,171

Glasprobentafel 6 Fortsetzung: Verschiedene Glasproben. – (Fotos M. Dodt, U. von Freeden, Fotos KHa 268-269: M. Segsneider; Tabelle K. Otten).

Abkürzungen

AKZ	LWL-Archäologie für Westfalen, Archäologische Denkmalpflege, Außenstelle Olpe	Mus. Duisburg	Kultur- und Stadthistorisches Museum, Duisburg
ALSH	Archäologisches Landesamt Schleswig-Holstein	Mus. Hamm	Gustav-Lübcke-Museum, Hamm
ALM	Archäologisches Landesmuseum Mecklenburg-Vorpommern, Schwerin	Mus. KpfP	Museum in der Kaiserpfalz, Paderborn
AStM	Archäologische Staatssammlung München	Mus. VFG Berlin	Museum für Vor- und Frühgeschichte, Berlin
Brandt 2012	K. Brandt, Hollingstedt an der Treene. Ein Flusshafen der Wikingerzeit und des Mittelalters für den Transitverkehr zwischen Nord- und Ostsee (Neumünster 2012).	Mus. VFG Frankfurt	Archäologisches Museum Frankfurt a. M., ehem. Museum für Vor- und Frühgeschichte, Frankfurt a. M.
EV	Eingangsverzeichnis	Ov	LVR-Amt für Bodendenkmalpflege, Außenstelle Overath
FB	Fundbericht	RGM	Römisch-Germanisches Museum, Köln
FN, FNr	Fund-Nummer	RGZM Mainz	Römisch-Germanisches Zentralmuseum, Mainz
Fst., FSt-N.	Fundstelle, Fundstellen-Nummer	RLMB	LVR-LandesMuseum Bonn, ehem. Rheinisches Landesmuseum, Bonn
FZ	Fundzettel	RLMT	Rheinisches Landesmuseum, Trier
LM Mainz	Landesmuseum, Mainz	SNA	Sammlung Nassauischer Altertümer, sam – Stadtmuseum am Markt, Wiesbaden
LM Münster	LWL-Museum für Kunst und Kultur, ehem. Landesmuseum, Münster	StA Duisburg	Stadtarchäologie, Duisburg