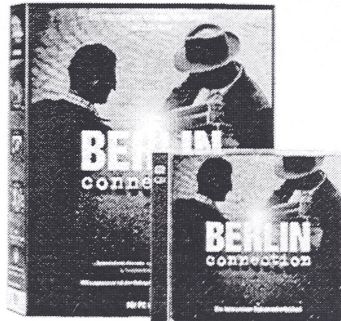


BERLIN CONNECTION
An interactive Documentary Thriller!

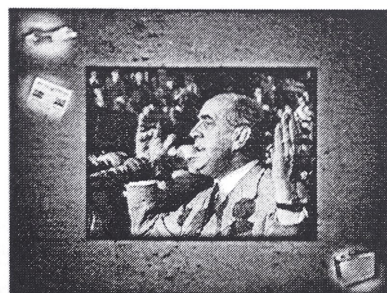
eku interactive
Prof. Eku Wand
Fuggerstraße 37
D-10777 Berlin
Phone +49 - 30 - 217 76 85
Fax +49 - 30 - 217 64 93
E-mail office@eku-interactive.de

The multimedia CD-ROM BERLIN CONNECTION has been on the market under the label eku interactive since last year. Set in the chaotic days following the fall of the Berlin Wall in November 1989 – a historic date which has its tenth anniversary this year – this interactive Documentary Thriller leads one through a synthesis of information and amusement in postwar Berlin.



While on assignment in 1989 in Berlin, the English photographer Roger Penrose falls into the hands of unscrupulous agents and profiteers who have been profiting from the Cold War. The player slips into the role of our leading man and determines the plot's progress. The game calls for cunning, sharp observation, powers of deduction, and a feel for criminology.

From the days after the war to the fall of the Berlin Wall: contemporary Berlin history is worked into this exciting crime thriller's plot in an entertaining and informative way. The audio-visual photo-documentary presentation merges interactive game scenarios and historical original recordings and footage in a fascinating atmosphere. The user interface is simple and can be quickly grasped even without specific computer experience. The famous German crime thriller writer Horst Bosetzky reacted enthused, "Exciting and informative – a must for every fan of crime thrillers!"



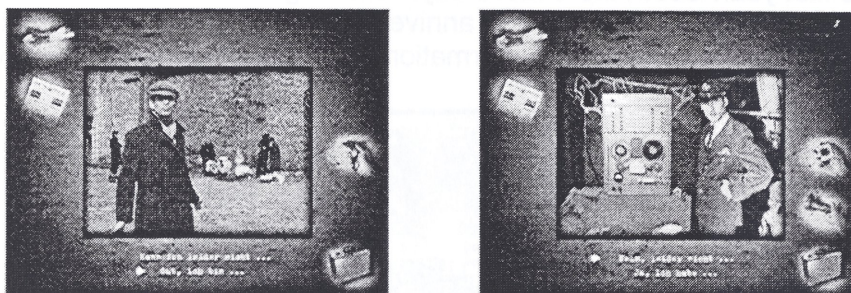
The plot in BERLIN CONNECTION continues yet, starting in October 1998, an investigative panel will meet in the Internet to expose the evil doings of Autumn 1989. More information to help solve the case can be found at www.berlin-connection.de. The plot will be extended in the Internet with

interesting additional information such as transcripts of tapped telephone conversations and background information on the origin of BERLIN CONNECTION.

Ekü Wand – Author, Director and Designer

Ekü Wand's personal graphic style, already well known in the multimedia scene, is reflected in the exterior design of the multimedia CD-ROM BERLIN CONNECTION. The graduate designer has lived in his city of choice, Berlin, since 1983 and the local flavor and intensive atmosphere of the once divided city are characterized here in attentive detail.

With BERLIN CONNECTION, Ekü Wand, one of the founders of Pixelpark in 1991 and one of the multimedia pioneers in Germany, has managed to bring contemporary history to life with the consequent utilization of multimedia applications. "This modern historical presentation goes beyond the usual conservation and exhibition of historical exponents and is directed toward young and old alike", says the 35 year old creator and producer of the CD-ROM.



First all the scenes were filmed like a movie-production, and then individual freeze frames (ca. 3000) from the video takes were digitized, retouched and integrated into the story. A contrast of moving scenarios (stop motion) and static scenery (freeze frames), evolved, which, for example, shown in sequence, make up a panoramic view, helping the player with orientation. The authentic audiovisual atmosphere conveys the player a feeling of being in the middle of the action.

Ekü Wand worked together with a production team of 40 people from the film and media industry over a period of over three years on the completion of this precisely detailed Documentary Thriller. The high degree of professionalism and quality holds up to international standards. BERLIN CONNECTION was honored with the Landeshauptstadt Stuttgart Multimedia Prize in 1998.

Facts, Figures and Data

PC

Windows 95/98 or Windows NT 4.x
Pentium 90 MHz, 16 MB RAM

Macintosh

Mac OS System 7.1 or higher
68030 or PPC, 12 MB RAM

An eku interactive production
With thanks to Der Tagesspiegel

German version:

Recommended retail price DM 69,90 / öS 530,— / sFr 69,90
Available in bookstores, computer stores and in the Internet.
ISBN 3-00-002766-1 / 2 CD-ROM in Eurobox / German Version

English version:

The English version is expected to be available in 2000.