

# POST-PENENTRATION - A VIDEO SCULPTURE

Nilufer Dzhaparkulova<sup>a</sup>, Katrin Wolf<sup>b</sup>

<sup>a</sup> *BTK – University of Art and Design, Berlin, Germany,  
niluferzakirova@gmail.com;*

<sup>b</sup> *Hamburg University of Applied Science, Hamburg, Germany,  
katrin.wolf@acm.org*

**ABSTRACT:** One traditional and important aim of art is to reflect on ongoing events and to point at problems of society. Thus, beside aiming for beauty and aesthetics, art has always tried to inspire discussions as well as to trigger thought and questions. In this work, the term “Post - Penetration” is used with the intention to create a feeling of backwash effect. Every action, every movement, every step has its own consequences. In chaos theory, the butterfly effect is the sensitive dependence on initial conditions in which a small change in one state of a deterministic nonlinear system can result in large differences in a later state. Nevertheless, most of the human beings are not aware of the effect of their actions. Such lack of awareness can penetrate nature. As a result, we are going to face post - penetration effect. The installation represents one element of possible scenarios. Post - Penetration is a project dedicated to deforestation topic. An installation combines both, sculpture and documentary video. It is made to document occurring events that have a big influence on ecological condition of the earth.



*Fig. 1: Post-Penetration: Projected video on sculpture*



*Fig. 2: Sculpture without video projection*

## 1. INTRODUCTION

We cannot overstate the importance of humankind's clearing of the forests. The transformation of forested lands by human actions represents one of the great forces in global environmental change and one of the great drivers of biodiversity loss. The impact of people has been and continues to be profound. Deforestation has important implications for life on this planet.

We are using the term “Post - Penetration” to create a feeling of backwash effect. Every action, every movement, every step has its own consequences. In chaos theory, the butterfly effect is the sensitive dependence on initial conditions in which a small change in one state of a deterministic nonlinear system can result in large differences in a later state.

Nevertheless, most of the human beings seem to be not aware of the importance of their actions. Human beings without such awareness, by high change, penetrate nature. As a result, we are going to face post - penetration effect. The presented installation represents one element of possible scenarios.

Concrete is used by human beings to build themselves habitation. Nowadays, by deforesting nature, people expand habitation areas. Such development makes forest residents, like animals and birds, leave their natural environment and become beings without place to live. Whilst such effects are well known, people continue damaging woods.

The concrete sculpture has a cubic shape to recreate abstract associations to human shaped buildings. By housing ourselves and filling forests with concrete, humans destroy animals’



*Fig. 3: Video used for projection*

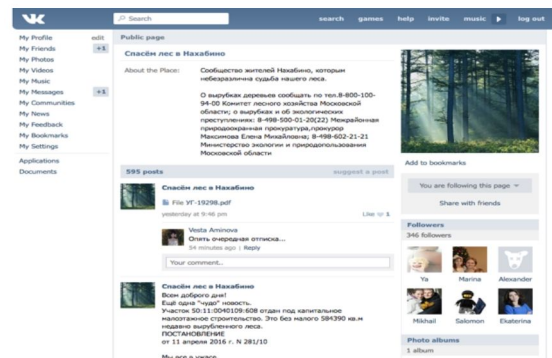
habitation. The sculpture represents post-penetration remains. A cold naked human made stone penetrates into a wooden nest. The installation unites two conditions of the situation. An action and an effect. The video symbolizes human actions as a penetration the nature, the sculpture symbolizes post - penetration effects (Fig. 2, 3).

The project can be defined as conceptual art with media elements. As a conceptual art installation, it makes viewers observe and question themselves.

## 2. INSPIRATION AND RELATED WORK

The foundation of this project is a video witnessing deforestation in its naked representation. Chopped giant, old spruces lying on the ground, smoke of a burning wood, a plain which used to be a part of a beautiful forest, all of this factors impressed us and encourage us to work on this project (Fig. 3).

Additional information about this place of deforestation (Nahabino village, Moscow), is provided by a group titled “Let’s save forest in Nahabino” in Russian social media. It contains articles, documents, different kinds of attempts to save the forest. (Fig. 4)



*Fig. 4: Page of the Russian social media group “Let’s save forest in Nahabino”*

One of the reasons for deforestation in Nahabino is to build new cottage villages. Forests were cut under government permission, because of the insect which spread over a certain zone and could damage even more, if it would not be burnt. Burning trees is a common way to kill the insects. However as you can see on the video, most of the trees are not burned. They are chopped and collected all together, to be transported somewhere. And nobody knows where.

Groups of people living in Nahabino try since years to discuss that problem at a government level. Many official papers were sent from the Forestry of Nahabino village to different government presons, even to the president.

Witnessing deforestation and human activities inspired us the most. The growth of this global problem increases with accelerating speed, and now it is happening in front of many people's suburban houses.

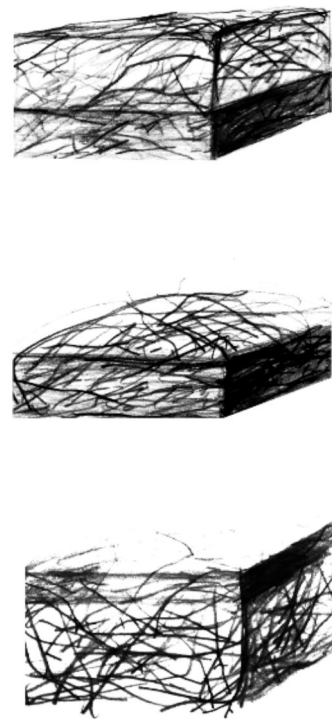
A work of Angela Palmer is very related to our project. Today, a tropical forest the size of a football pitch is destroyed every four seconds, impacting the climate, biodiversity, and the livelihoods of indigenous people. To highlight this alarming fact, the artist Angela Palmer created Ghost Forest, a striking public installation to create awareness on climate change and deforestation.

By placing giant tree stumps on public spaces throughout several European cities, Ghost Forest has been a travelling installation, giving people a chance to see, touch, and smell the rainforest by acting as trees ambassadors.

### 3. METHOD

Getting in touch with a victim of human activities is an opportunity to inspire artist creativity. Consequently, and inspired by the "Ghost Forest" project, we created "Post - Penetration", a sculpture out of Nahabino forest's dead wooden brunches. Through projecting a video documenting destroying nature on the sculpture, people can get close to happening events, aiming for awareness and empathy.

"Post - Penetration" is an installation which shows repercussion of human actions in the nature. It combines both sculpture and documentary video.



*Fig. 5: Sketches of the sculpture made in the design phase*

The video contains fragments of deforestation - carved, burning trees in Moscow suburban place. It was made under an emotional shock, while going from faubourg to city center. The video represents actions, made by humans. While the sculpture represents the effect of certain actions, the sculpture is made of concrete and dead brunches. It is a square with a dead abandon nest growing out of it.

The creation of the sculpture was realized through drawings and sketches (Fig. 5). Its intended that the sculpture reminds on human habitation. Therefore, we used a rectangular form. Concrete as a material refers to human habitations (buildings, houses etc.). At the same moment, it should have some nature shaped elements in it. So the nest made out of dead wooden brunches.

#### 4. CONCLUSION

About one half of the forests that covered the Earth are gone. Forests are complex ecosystems that affect almost every species on the planet. When they are degraded, it can set off a devastating chain of events, both, locally and around the world. Some believe that to counter deforestation, people simply need to plant more trees. Even though a massive replanting effort would help to alleviate the problems deforestation caused, it would not solve them all.

Planting new trees in Nahabino district after chopping sounds quiet ridiculous. However, optimist people think that we still can stop deforestation by acting as a crowd. Even if the actions are made in a different field, it could be more helpful. Some create a public group in social network to inform people about events happening through collecting evidence like photographs and official papers. Others create official papers and get in contact with government. Artists have the opportunity to collaborate with those people, nevertheless we don't know each other, be creating and exhibiting our work to be seen by a broad public.

Our project allows observers getting into the mood of our installation. They can question themselves what phenomenon of civilization

destroy nature and what further actions are possible to communicate that or to even stop it.

Post – Penetration is a conceptual art installation with a part of documentary elements, which aims to communicate with people's minds and wills. It can affect future in a tiny or huge ways.

#### 5. ACKNOWLEDGEMENTS

We thank BTK for providing us with the opportunity to create this work. Especially, we want to thank Florian Kühnle and Thomas Noller for giving helpful feedbacks. I would also like to thank Riccardo Torresi and Florian Kühnle for helping with the craft work.

#### 6. REFERENCES

1. Angela Palmer. 2010. Ghost Forest. <http://www.ghostforest.org/>
2. Jamie North. 2014. Terraforms. <http://jamienorth.com/13030/3499293/selected-works/terraforms-2014>
3. Public against deforestation in Nahabino district. <https://vk.com/spasemles>